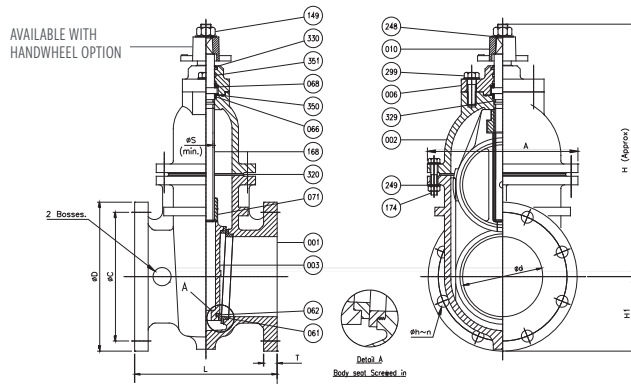


METAL SEAT SOLID Wedge Gate Valve

PRODUCT FEATURES

- Designed and manufactured for use in Wastewater and Sewage applications. 2" through 96"/DN50 through DN2400
- 250psig/17barg operating pressure (optional 300psig/20barg)
- Ductile Iron (ASTM A536 Gr. 64-45-12) Body and Wedge
- Coated with Fusion Bonded Epoxy
- Aluminium Bronze ASTM B148 Gr. C95800 Body and Disc Seat Rings
- Conforms with AWWA C500, ANSI B16.1 CL. 125 # Drilling (250#, PN10, PN16, AS4087, AS2129 drilling options available upon request)
- Bronze trim with 316 Stainless Steel Stem
- Bronze Body and Wedge guides in all Valves 14"/DN350 and larger
- Available with optional by-passes, clean-out ports, indicator, rollers and tracks and/or extension stems and floor stands.
- O-ring Stem seal for NRS and Packing Stem seal for OS&Y
- Full flow waterway assures performance and prevents clogging
- Extra wide bronze surfaces on disc and seat provide large seating area
- Corrosion resistant, one-piece Stem manufactured using high-strength Stainless Steel
- Certified to NSF 361 and NSF 372 standards



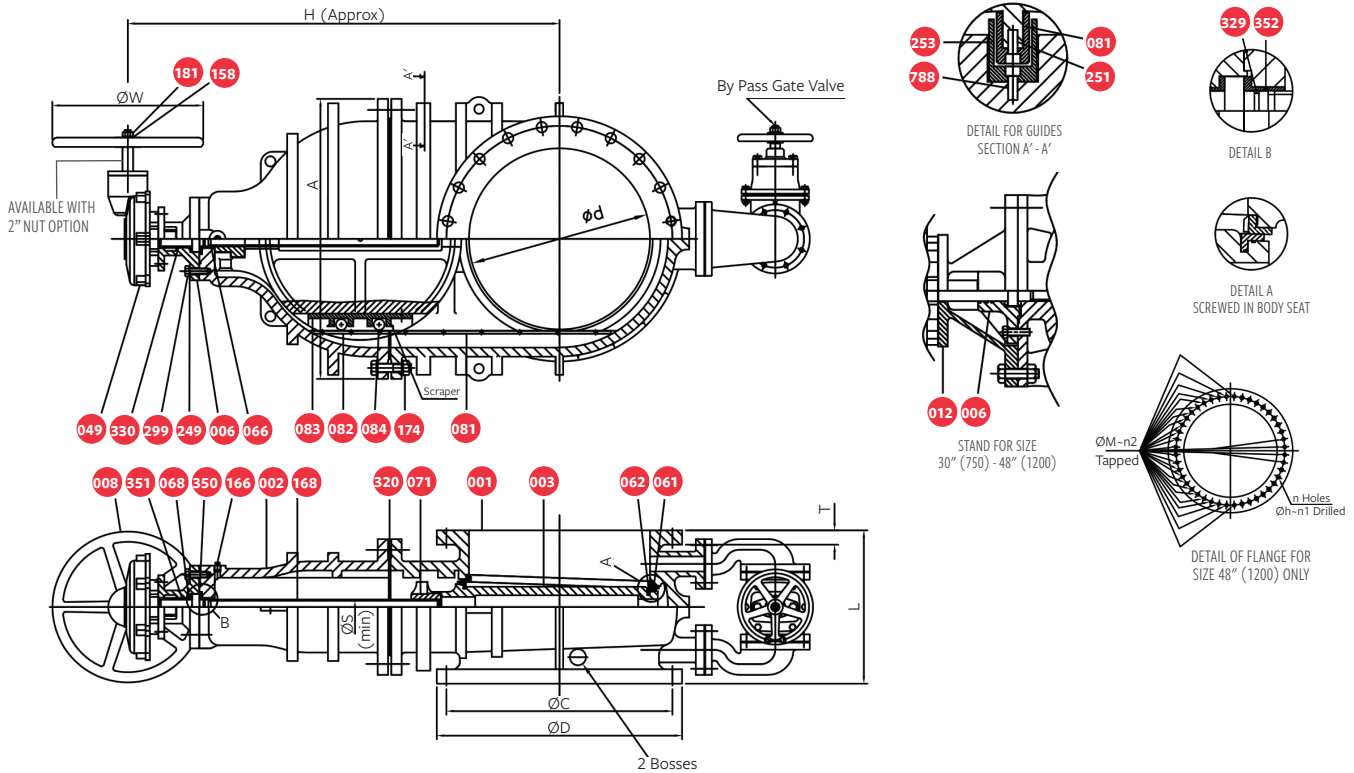
MATERIAL LIST

NO.	PARTS	MATERIALS	ASTM DESIGN	QTY.
351	O-Ring B	Rubber (NBR)	D 2000 BK 707	2
350	O-Ring A	Rubber (NBR)	D 2000 BK 807	1
330	Wiper Ring	Rubber (NBR)	D 2000 BK 707	1
329	O-Ring	Rubber (NBR)	D 2000 BK 807	1
320	Bonnet Gasket	Rubber (NBR)	D 2000 BK 807	1
299	Stuffing Box Bolt	Stainless Steel	A276 Type 316	2
249	Washer	Stainless Steel	A276 Type 316	1 Set
248	Top Washer	Stainless Steel	A276 Type 316	1
174	Bonnet Bolt & Nut	Stainless Steel	A276 Type 316	1 set
168	Stem	Stainless Steel	A276 Type 316	1
149	Top Nut	Stainless Steel	A276 Type 316	1
071	Stem Nut	Nickel Aluminium Bronze	B 148 C95800	1
068	Stuffing Box Bushing	Nickel Aluminium Bronze	B 148 C95800	1
066	Bonnet Bushing	Nickel Aluminium Bronze	B 148 C95800	1
062	Disc Seat Ring	Nickel Aluminium Bronze	B 148 C95800	2
061	Body Seat Ring	Nickel Aluminium Bronze	B148 C95800	2
010	Operating Nut	Cast Iron	A126 Class B	1
006	Stuffing Box	Ductile Iron	A 536 Gr. 65-45-12	1
003	Disc	Ductile Iron	A 536 Gr. 65-45-12	1
002	Bonnet	Ductile Iron	A 536 Gr. 65-45-12	1
001	Body	Ductile Iron	A 536 Gr. 65-45-12	1

DIMENSIONS - INCHES (MM)

SIZE ØD		ANSI B 16.1 CLASS 125											APPROX. WEIGHT	NO. OF TURNS
IN.	MM.	L	ØD	ØC	ØH	N	T	A	ØS AT BASE OF THREAD	H	H1			
2	50	7±1/16	6	4 3/4	3/4	4	5/8	5.71	0.86	11.02	3	35	7	
2½	65	7½±1/16	7	5 1/2	3/4	4	11/16	6.34	0.86	12.48	3½	47	8	
3	80	8±1/16	7 1/2	6	3/4	4	3/4	7.72	0.86	13.51	3¾	58	10	
4	100	9±1/16	9	7 1/2	3/4	8	15/16	8.78	0.86	14.77	4½	87	13	
6	150	10½±1/16	11	9 1/2	7/8	8	1	11.11	1.00	18.58	5½	185	19	
8	200	11½ ± 1/16	13 1/2	11 3/4	7/8	8	1 1/8	14.02	1.00	21.69	6¾	290	25	
10	250	13±1/16	16	14 1/4	1	12	1 3/16	16.46	1.12	25.35	8	429	31	
12	300	14±1/8	19	17	1	12	1 1/4	18.82	1.19	28.94	9½	528	37	

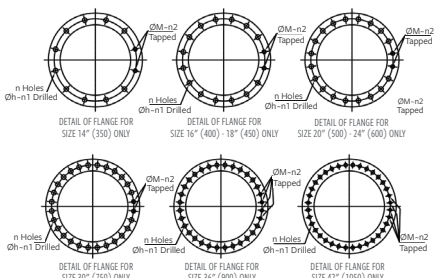
NON-RISING STEM (NRS) GATE VALVE 250 PSI BEVEL GEAR WITH HANDWHEEL AND BYPASS VALVE, 125# FLANGES (SIZE 14" - 48"/DN350 - DN1200) HORIZONTAL INSTALLATION



SIZE ØD		ANSI B 16.1 CLASS 125										GEAR OPERATOR	BYPASS SIZE	ØM	N1	N2
IN.	MM.	L	ØD	ØC	ØH	N	T	A	ØS AT BASE OF THREAD	H	ØW					
14	350	15±½	21	18 ¾	1 ⅞	12	1 ⅜	22.76	1.44	35.69	15.75	CB2.5 (2.5:1)	2	1 x 8 TPI (UNC)	10	2
16	400	16±½	23 ½	21 ¼	1 ⅞	16	1 ⅞	25.98	1.44	40.33	17.72	CB3 (3:1)	3	1 x 8 TPI (UNC)	14	2
18	450	17±½	25	22 ¾	1 ¼	16	1 ⅞	29.13	1.75	42.85	17.72	CB3 (3:1)	3	1 ⅛ x 7 TPI (UNC)	14	2
20	500	18±½	27 ½	25	1 ¼	20	1 ⅞	32.52	1.75	47.93	17.72	CB3 (3:1)	3	1 ⅞ x 7 TPI (UNC)	18	2
24	600	20±½	32	29 ½	1 ⅜	20	1 ⅞	36.54	1.97	56.30	19.69	CB4 (4:1)	4	1 ¼ x 7 TPI (UNC)	18	2
30	750	24±½	38 ¾	36	1 ⅞	28	2 ⅞	45.28	2.19	69.88	19.69	CB4 (4:1)	4	1 ¼ x 7 TPI (UNC)	26	2
36	900	28±½	46	42 ¾	1 ⅞	32	2 ⅞	53.94	2.50	84.37	24.53	CB6 (6:1)	6	1 ½ x 6 TPI (UNC)	28	4
42	1050	32±½	53	49 ½	1 ⅞	36	2 ⅞	60.39	2.75	94.69	24.53	CB6 (6:1)	6	1 ½ x 6 TPI (UNC)	32	4
48	1200	33±½	59 ½	56	1 ⅞	44	2 ¾	74.57	3.43	106.69	24.53	CB8 (8:1)	8	1 ½ x 6 TPI (UNC)	16	28

- Dimensions in Inches

NO.	PARTS	MATERIAL	ASTM.DESIGN.	QTY	NO.	PARTS	MATERIAL	ASTM.DESIGN.	QTY
788	Disc Guide Bolt	Stainless Steel	A 276 Type 316	1 set	082	Bonnet Guide	Nickel Aluminium Bronze	B 148 C95800	2
352	O-Ring C	Rubber (NBR)	D 2000 BK 707	1	081	Body Guide	Nickel Aluminium Bronze	B 148 C95800	2
351	O-Ring B	Rubber (NBR)	D 2000 BK 707	2	071	Stem Nut	Nickel Aluminium Bronze	B 148 C95800	1
350	O-Ring A	Rubber (NBR)	D 2000 BK 707	1	068	Stuffing Box Bushing	Nickel Aluminium Bronze	B148 C95800	1
330	Wiper Ring	Rubber (NBR)	D 2000 BK 707	1	066	Bonnet Bushing	Nickel Aluminium Bronze	B 148 C95800	1
329	O-Ring	Rubber (NBR)	D 2000 BK 707	1	062	Disc Seat Ring	Nickel Aluminium Bronze	B 148 C95800	2
320	Bonnet Gasket	Rubber (NBR)	D 2000 BK 807	1	061	Body Seat Ring	Nickel Aluminium Bronze	B 148 C95800	2
299	Stuffing Box Bolt	Stainless Steel	A 276 Type 316	1 set	049	Gear Operator	See Table	—	1 set
253	Disc Guide	Nickel Aluminium Bronze	B 148 C95800	1	012	Stand	Ductile Iron	A 536 Gr. 65-45-12	1
251	Body Guide Bolt	Stainless Steel	A 276 Type 316	2 set	008	Hand Wheel	Cast Iron	A126 Class B	1
249	Washer	Stainless Steel	A 276 Type 316	1 set	006	Stuffing Box	Ductile Iron	A 536 Gr. 65-45-12	1
181	Hand Wheel Nut	Stainless Steel	A 276 Type 316	1	003	Disc	Ductile Iron	A 536 Gr. 65-45-12	1
174	Bonnet Bolt & Nut	Stainless Steel	A 276 Type 316	1 set	002	Bonnet	Ductile Iron	A 536 Gr. 65-45-12	1
168	Stem	Stainless Steel	A 276 Type 316	1	001	Body	Ductile Iron	A 536 Gr. 65-45-12	1
166	Plug	Stainless Steel	A 276 Type 316	1					
158	Hand Wheel Washer	Stainless Steel	A 276 Type 316	1					
084	Roller	Nickel Aluminium Bronze	B 148 C95800	2					
083	Roller Box	Nickel Aluminium Bronze	B 148 C95800	1					



For more information about us, or to view our full line of products, please visit www.mueller-international.com or call International Customer Service at:

UK: +44.1438.487410 Dubai: +971.4.214.6640 Singapore: +65.6816.3088 USA: +1 800.423.1323 International@muellerwp.com

Mueller refers to one or more of Mueller Water Products, Inc., a Delaware corporation ("MWP"), and its subsidiaries. MWP and each of its subsidiaries are legally separate and independent entities when providing products and services. MWP does not provide products or services to third parties. MWP and each of its subsidiaries are liable only for their own acts and omissions and not those of each other. MWP brands include Mueller®, Echologics®, Hydro Gate®, Hydro-Guard®, Jones®, Krausz®, Mi.Net®, Milliken®, Pratt®, Pratt Industrial®, Singer®, and U.S. Pipe Valve & Hydrant. Please see muellerwp.com/brands to learn more.

© 2020 Mueller Water Products, Inc. All Rights Reserved. The trademarks, logos and service marks displayed in this document are the property of Mueller Water Products, Inc., its affiliates or other third parties. Products above marked with a section symbol (§) are subject to patents or patent applications. For details visit www.mwppat.com.

