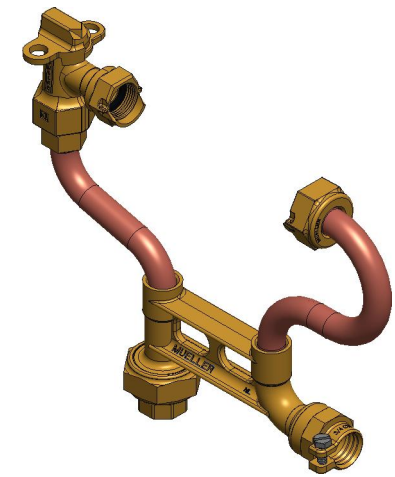
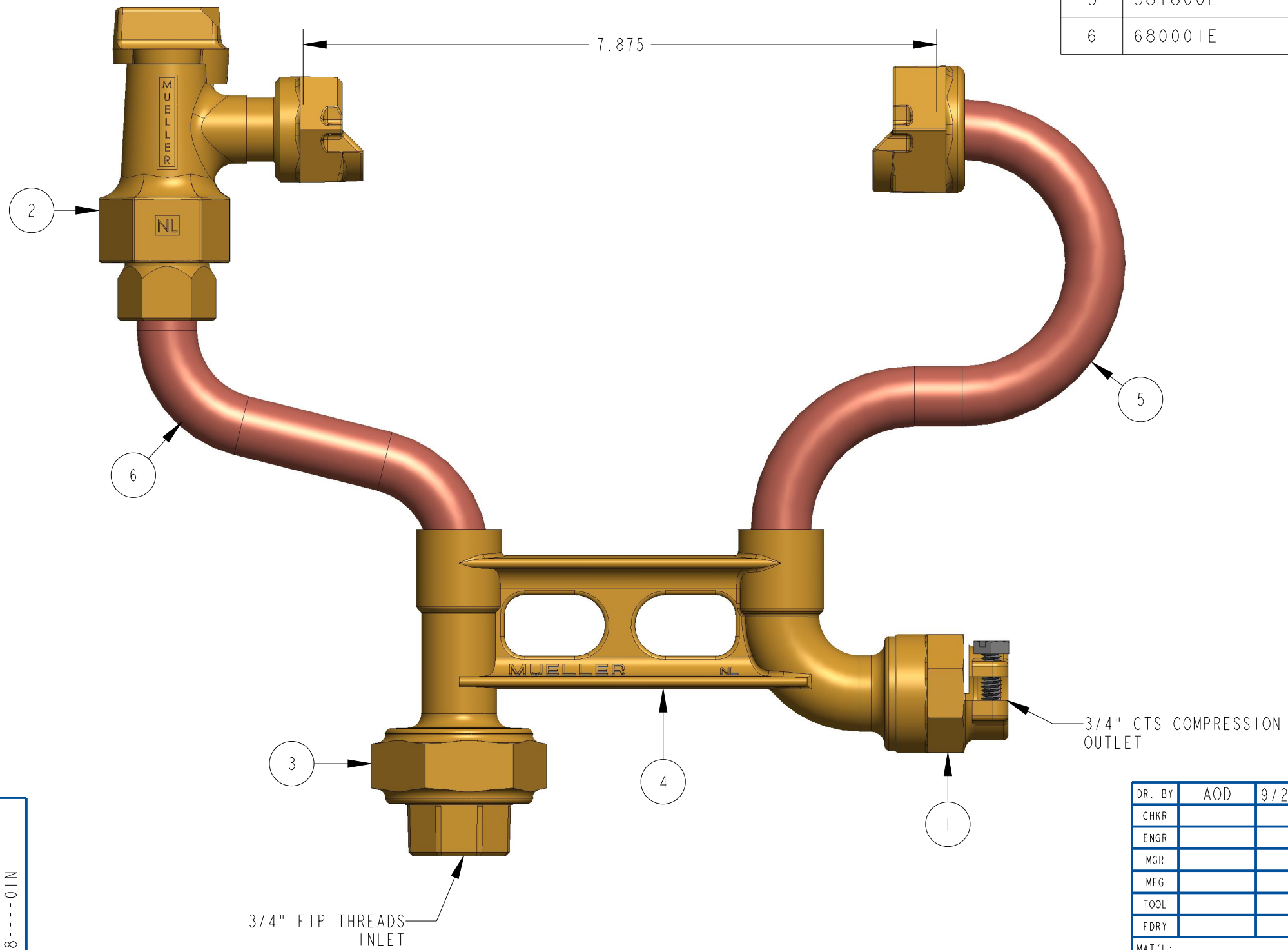


ITEM NO	PART NUMBER	QTY	DESCRIPTION
1	681921	1	3/4" PACK JOINT
2	203HI4265N	1	5/8" X 3/4" ANGLE METER STOP
3	215HI4222	1	3/4" MULTI-PURPOSE X 3/4" FIP TAIL PIECE
4	539026E	1	3/4" MULTI PURPOSE X CTS 110 METER BAR
5	581800E	1	RISER SUB ASSEMBLY W/ SADDLE NUT
6	680001E	1	RISER SUB ASSEMBLY



OPTION CODE 01:

*HI4222 INSTALLED ON INLET

DR. BY	AOD	9/29/21	UNLESS OTHERWISE NOTED	THIRD ANGLE PROJECTION	C.B. NO.
CHKR			BREAK CAST CORNER(S)---		
ENGR			BREAK MACH CORNER(S)---	PURCH.	FINISH
MGR			TOLERANCES	REF. NO.	PATT. NO.
MFG			UNLESS OTHERWISE NOTED	SCALE	
TOOL			LINEAR	ANGULAR	
FDRY			±	±	STK. NO.

MAT'L:	
	DESCR. 5/8" COPPER METER SETTER 7" RISER HEIGHT LOW LEAD BRASS
	NUMBER 200P1588----01N

200P1588----01N