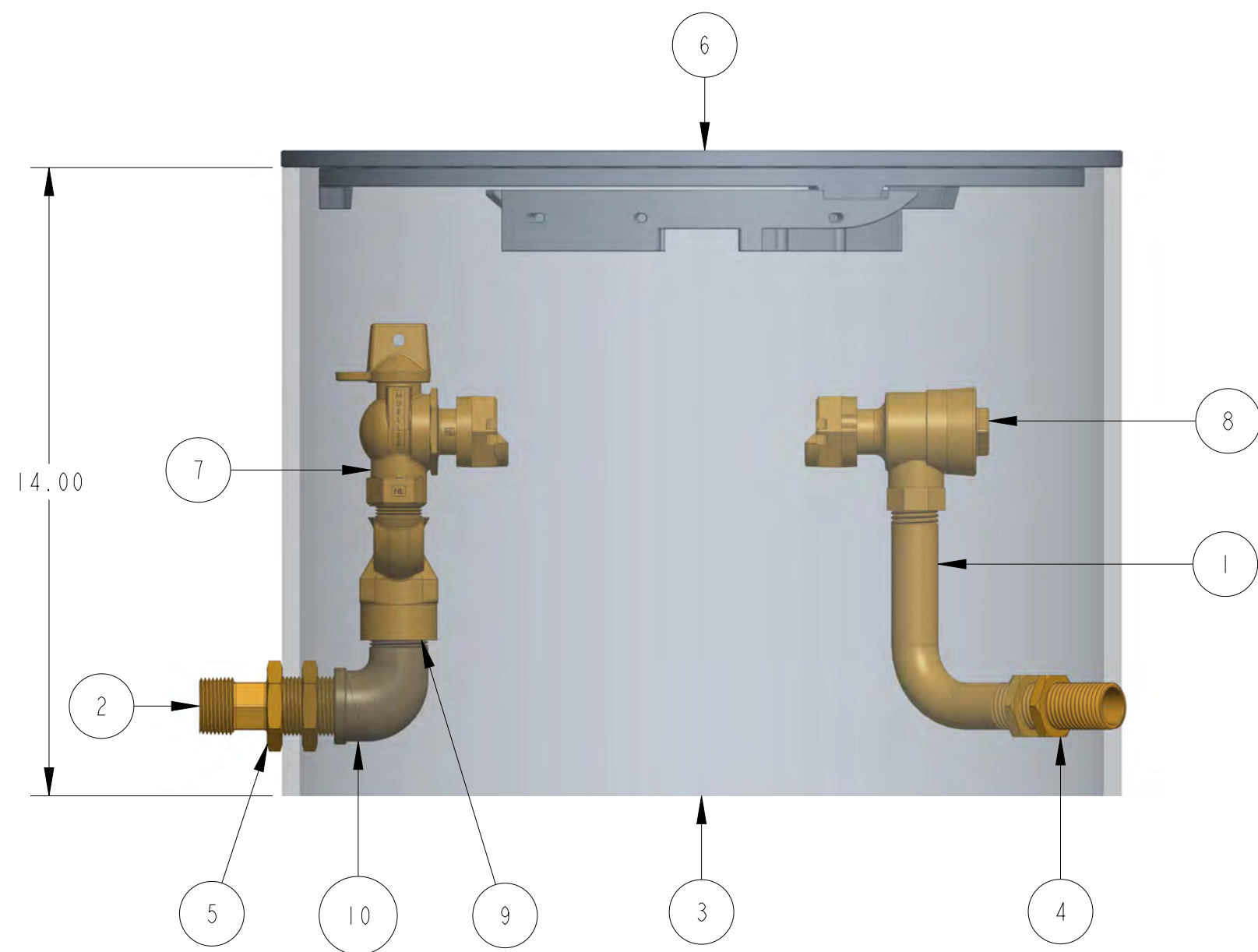
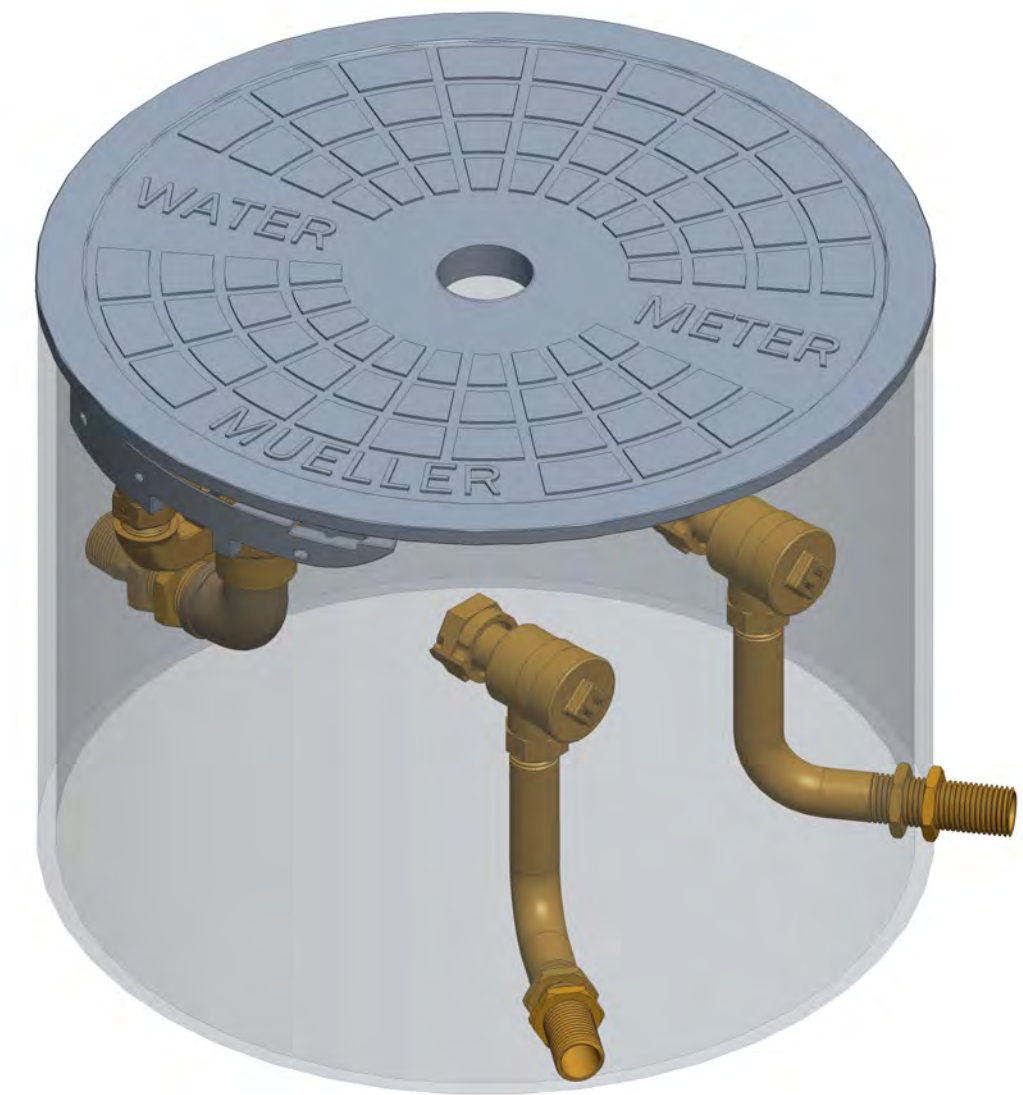
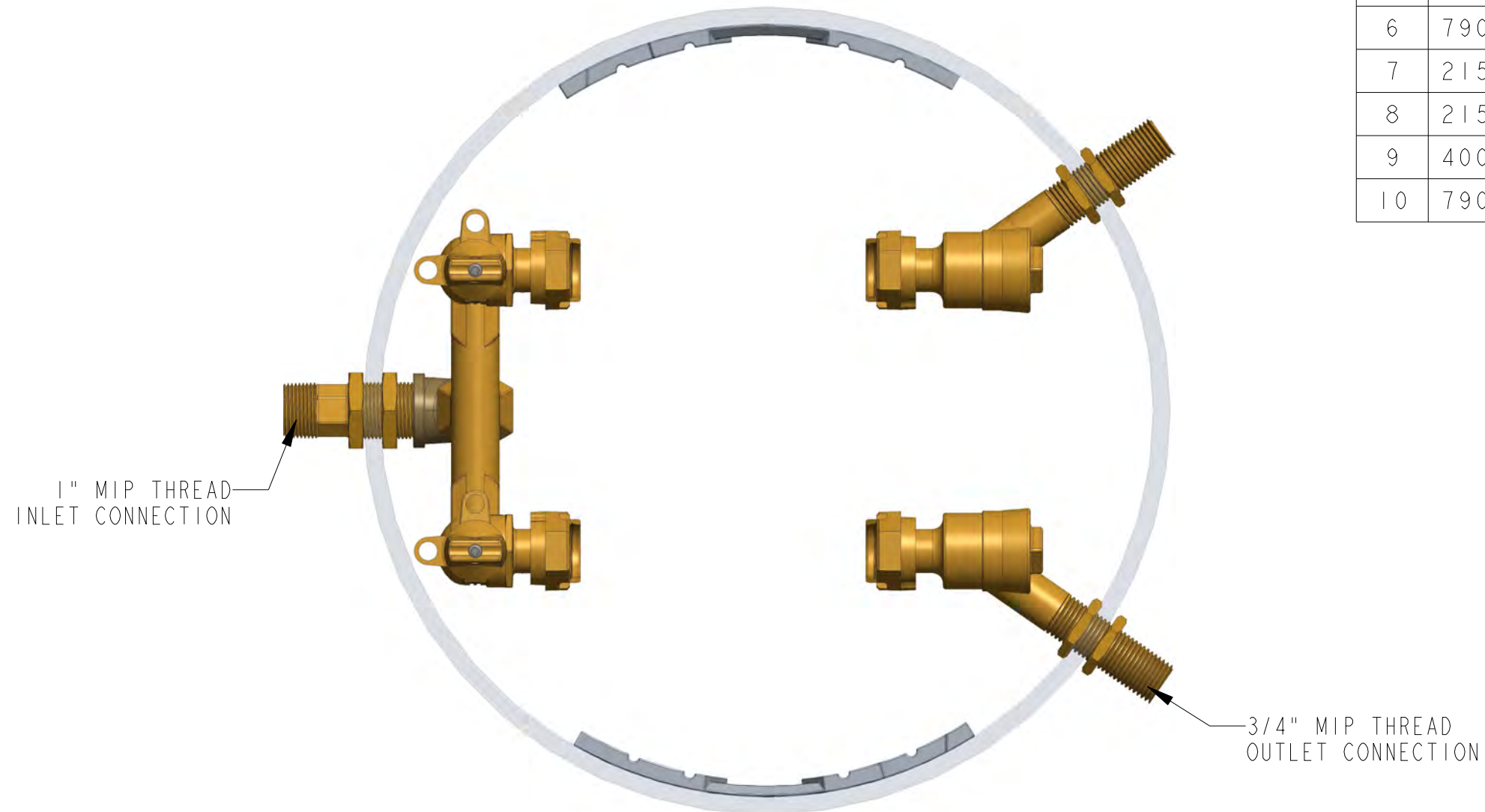


ITEM NO	PART NUMBER	QTY	DESCRIPTION
1	548392	2	3/4" BRASS PIPE RISER
2	700581	1	1" NIPPLE WITH FLATS
3	780084-1814	1	SHELL SUB ASSEMBLY
4	790006	4	3/4" HEX NUT
5	790010	2	1" HEX NUT
6	790018-TR2	1	18" DIA FLAT NON LOCKING LID W/ 2" TR HOLE (SOLD SEPARATELY)
7	215B24265N	2	5/8" X 3/4" FULL PORT BALL VALVE
8	215HI4244AN	2	5/8" X 3/4" ASSE DUAL CHECK VALVE
9	400HI5365N	1	1" INLET X 3/4" OUTLET U-BRANCH
10	790052E	1	1" STREET ELBOW



OPTION CODE: 000055
 *(1) 1" INLET & (2) 3/4" OUTLETS

DR. BY	AOD	7/20/21	UNLESS OTHERWISE NOTED		THIRD ANGLE PROJECTION		C.B. NO.	
CHKR			BREAK CAST CORNER(S)---					
ENGR			BREAK MACH CORNER(S)---		PURCH.	FINISH	PATT. NO.	
MGR			TOLERANCES UNLESS OTHERWISE NOTED					
MFG			LINEAR	ANGULAR	REF. NO.	SCALE		
TOOL			±	±	STR. NO.			
FDRY			MATERIAL:					
			DESCR. 5/8" X 3/4" RIGID DOUBLE METER PIT 18" DIA. X 14" DEPTH LOW LEAD BRASS				NUMBER	
							203RD1814FSBN000055N	