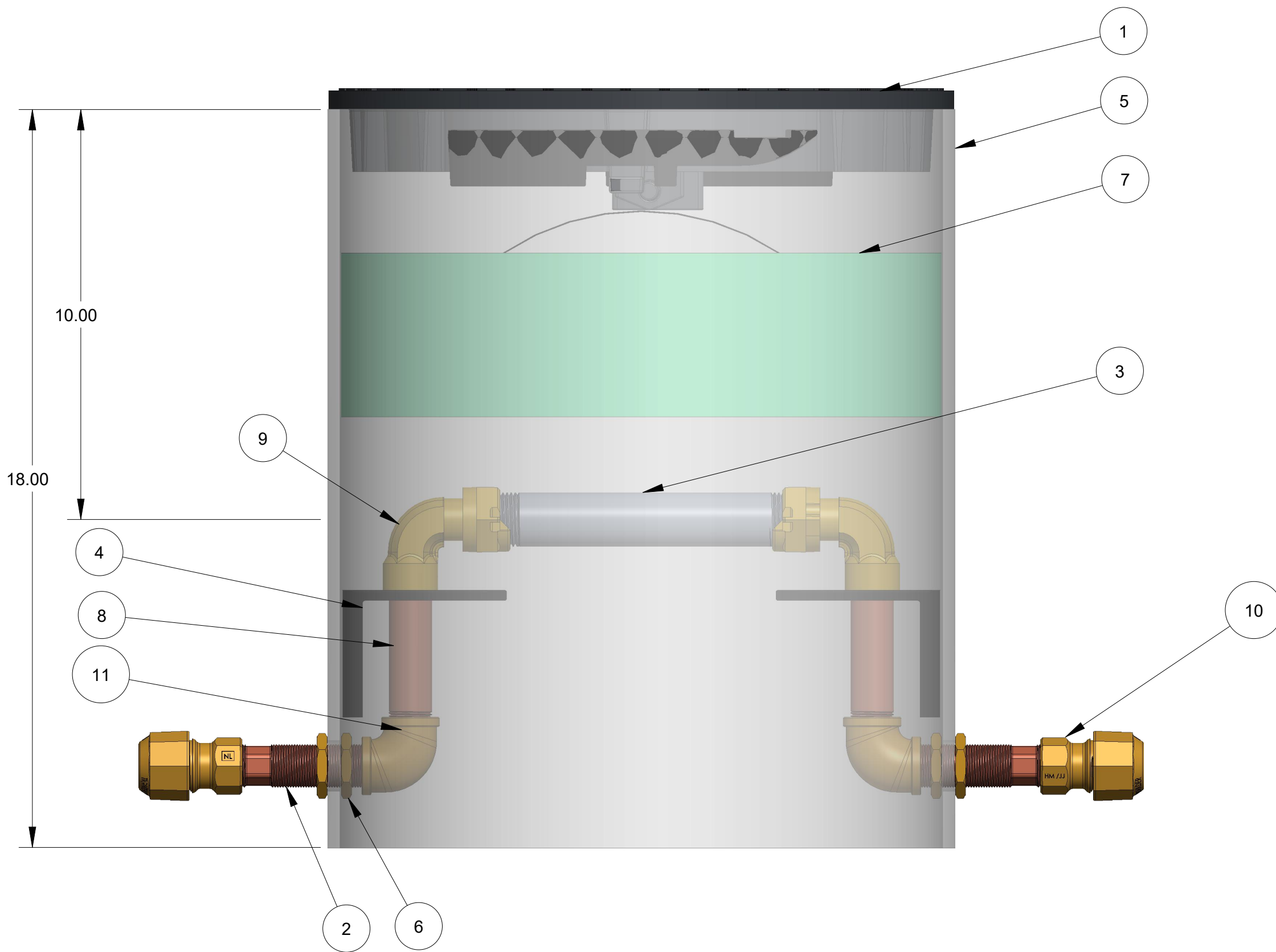
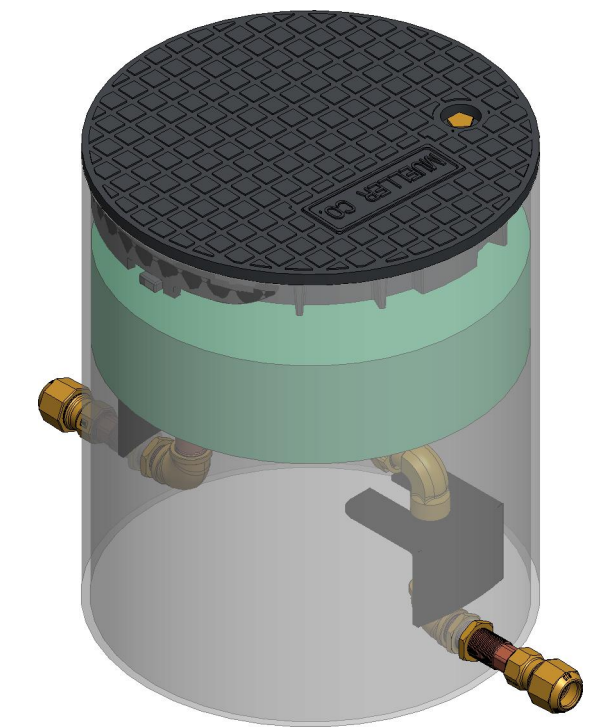
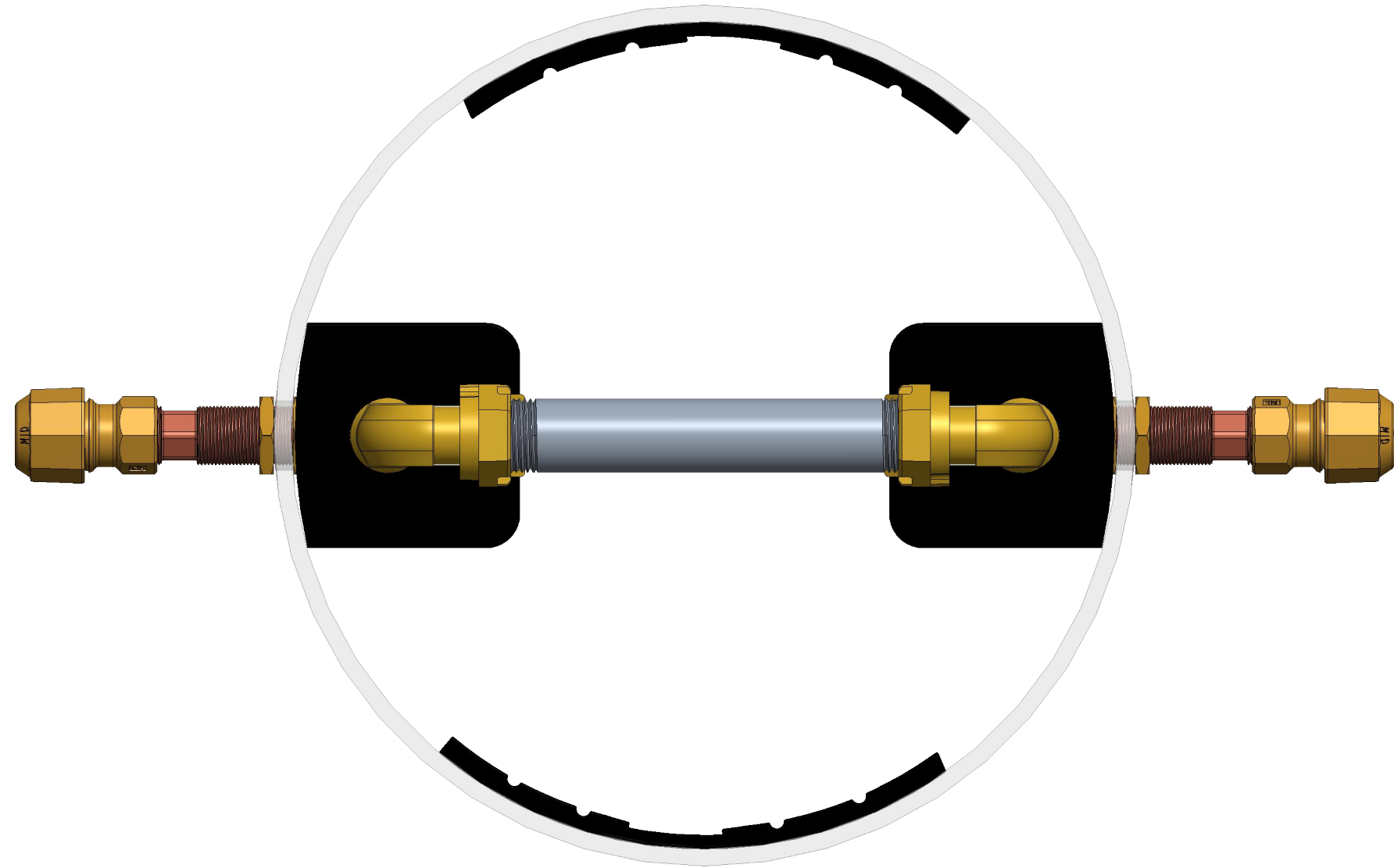


ITEM NO	PART NUMBER	QTY	DESCRIPTION
1	311954	1	15" COMPOSITE SIDE LOCKING LID (SOLD SEPARATELY)
2	700131	2	3/4" NIPPLE WITH WRENCH FLATS
3	700220	1	5/8" X 3/4" METER JUMPER
4	700407	2	STABILIZED BRACKET TRIMMED
5	780073-1518	1	SHELL SUB ASSEMBLY
6	790006	4	3/4" HEX NUT
7	790022	1	15" INSULATION PAD (SOLD SEPARATELY)
8	790138	2	NIPPLE 3/4" X 4-1/2"
9	215H14210	2	5/8" X 3/4" METER COUPLING (SWIVEL NUT)
10	215H15451N	2	3/4" FIP X 110 COMPRESSION TAILPIECE
11	790026E	2	3/4" FNPT THREADED ELBOW



OPTION CODE: 000198  
 \*H15451 INSTALLED ON INLET AND OUTLET

DR. BY	BBF	3/23/21	UNLESS OTHERWISE NOTED		THIRD ANGLE PROJECTION		C.B. NO.	
CHKR			BREAK CAST CORNER(S)---					
ENGR			BREAK MACH CORNER(S)---		PURCH.	FINISH	PATT. NO.	
MGR			TOLERANCES UNLESS OTHERWISE NOTED		REF. NO.	SCALE		
MFG			LINEAR	ANGULAR	STK. NO.			
TOOL			±	±				
FDRY			MATERIAL:					
							DESCR.	5/8"X3/4" RIGID SINGLE METER PIT Ø 15" X 18" DEPTH LOW LEAD BRASS
			NUMBER				203RS1518AABS000198N	