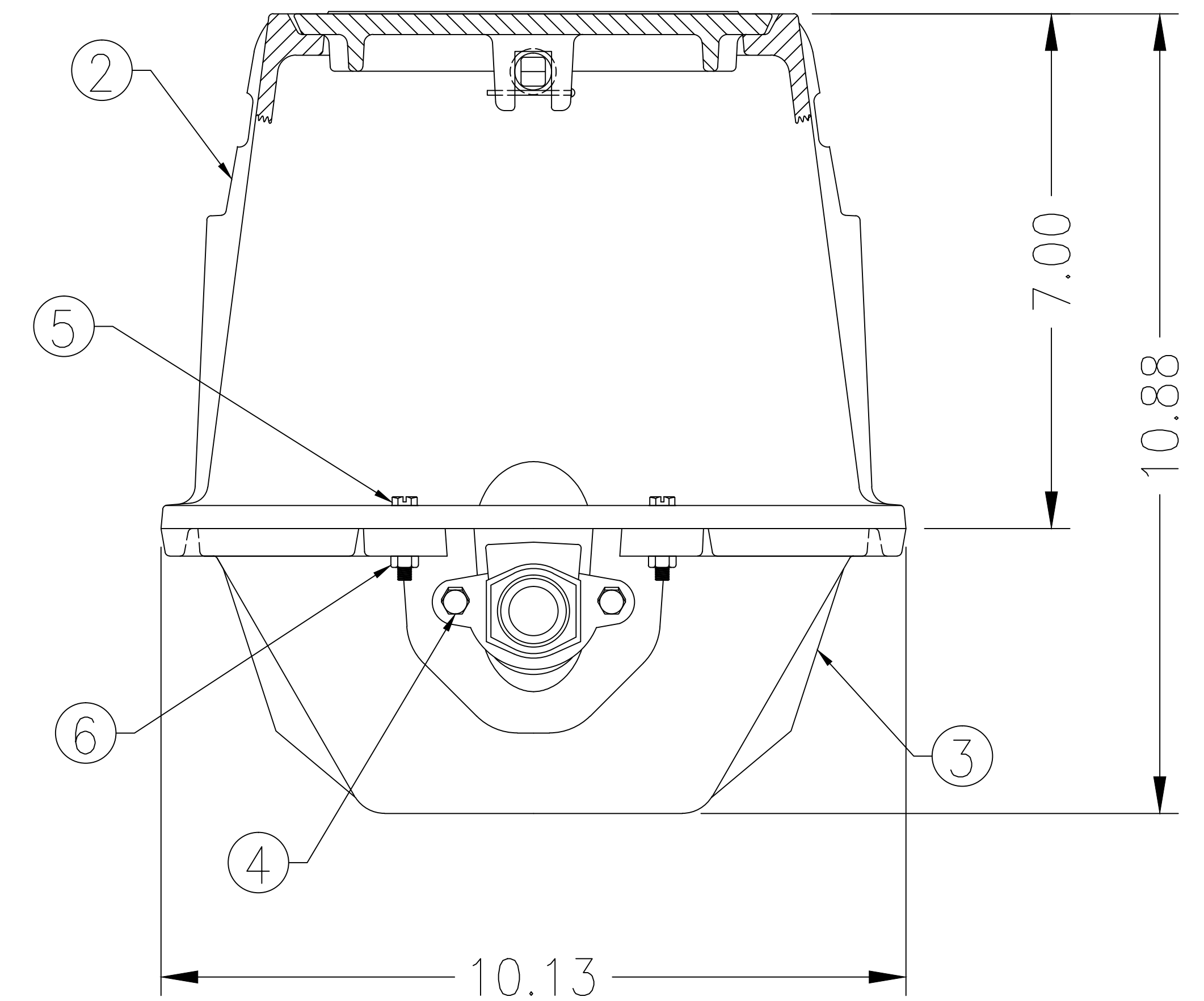
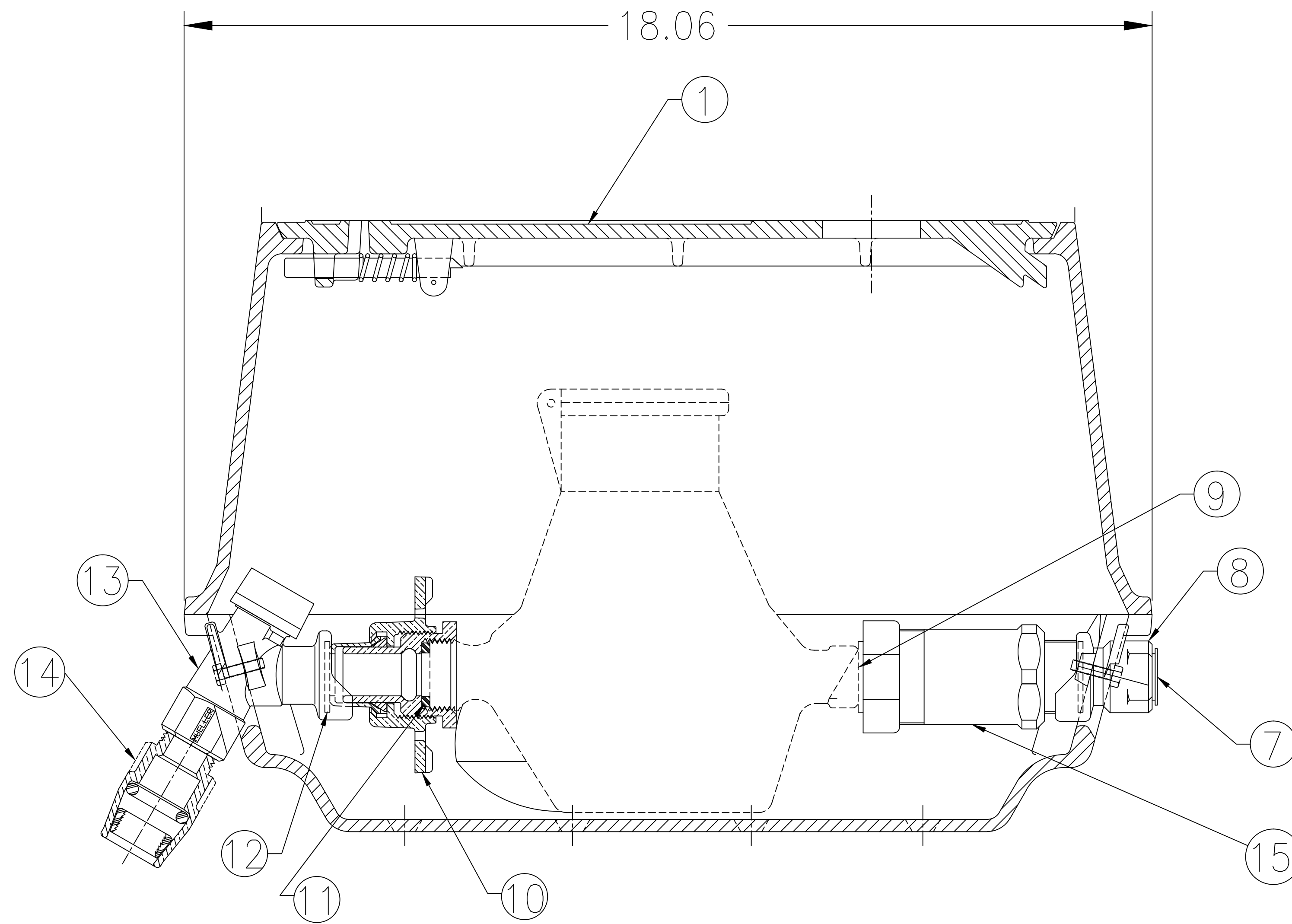


PARTS LIST					
ITEM	DESCRIPTION	REQ'D	MATERIAL	A.S.T.M.	
1	METER LID (LOCKING)	1	CAST IRON	A126	CLASS B
2	METER BOX UPPER SECT.	1	CAST IRON	A126	CLASS B
3	METER BOX BASE TRAY	1	CAST IRON	A126	CLASS B
4	HEX HEAD CAP SCREW	4	STAINLESS STEEL		
5	SLOTTED HEX HEAD MACH. SCREW	4	STAINLESS STEEL		
6	RETAINING NUT	4	STAINLESS STEEL		
7	CAPLUG	2	POLYETHYLENE		
8	OUTLET CONNECTION	1	BRONZE	B62	
9	GASKET	1	RUBBER		
10	HANDWHEEL EXPANSION UNIT	1	BRONZE	B62	
11	GASKET	1	RUBBER		
12	GASKET	2	RUBBER		
13	INLET VALVE	1	BRONZE	B62	
14	STRAIGHT COUPLING	1	BRONZE	B62	
15	CHECK VALVE	1	BRONZE	B62	



234H1461--B-09N

REV.	DESCRIPTION	REF.	DRFTR	CHKR	APP	DATE

<small>INCH</small> <small>(MILLIMETER)</small>		<b>TOLERANCES - MACHINING</b> UNLESS OTHERWISE NOTED BREAK EDGES FINISH SURFACES MACH. .006/.016 125		THIRD ANGLE PROJECTION 	
INITIAL RELEASE	DRFTR JCI 7-22-11	CHKR	APP	FRACTIONS ±1/64	DECIMALS 2 PL ±.025 3 PL ±.010
E.O. NUMBER				ANGLES ±1°	PURCH. FINISH REF. NO. SCALE STK. NO. 1:1.5
MAT'L DESCR. 5/8 X 3/4 X 7" LOW LEAD CAST IRON METER BOX AND FITTINGS				REVISION NUMBER 234H1461--B-09N	SHEET 1 OF 1

ECO: 1568108