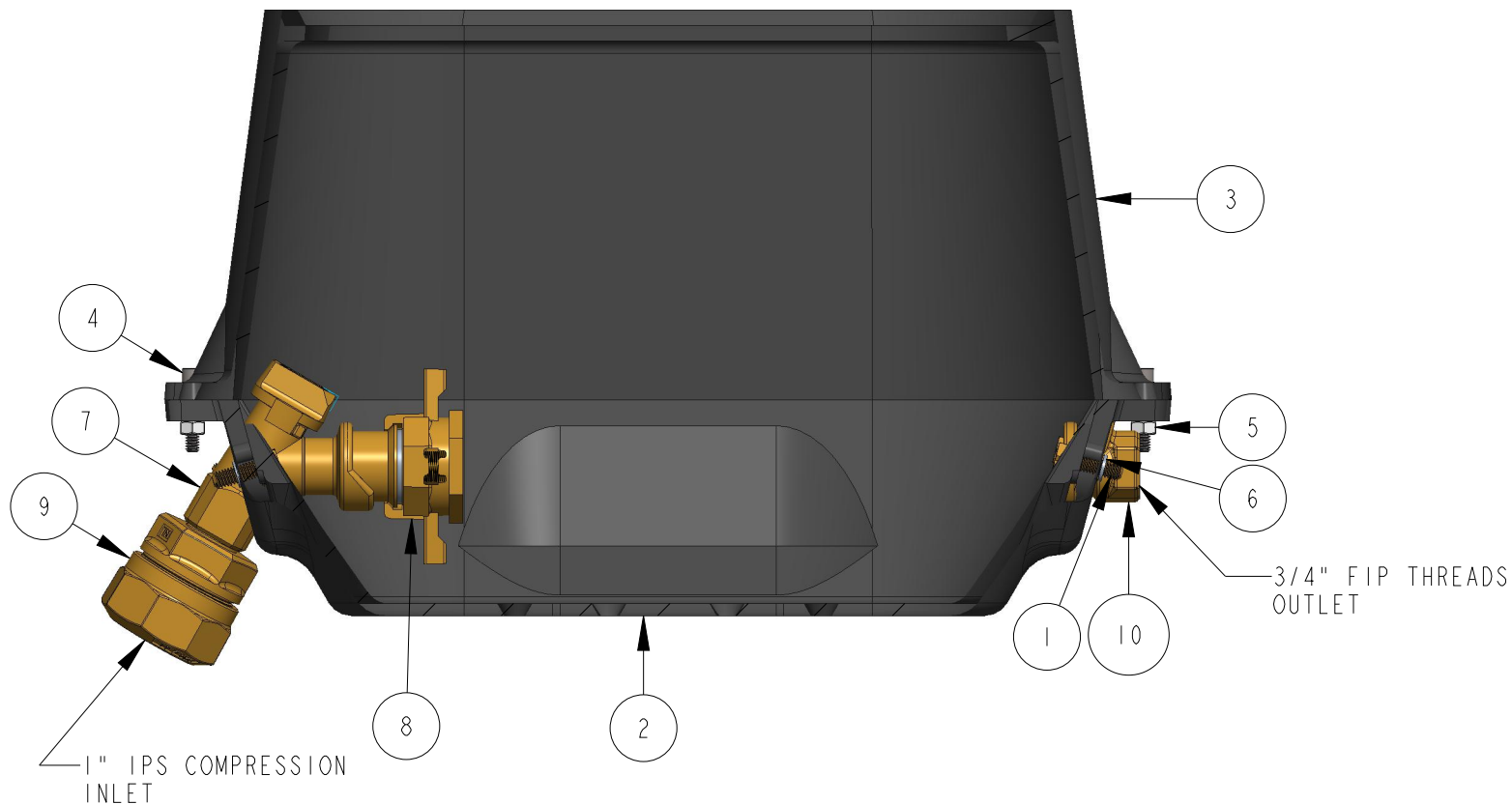
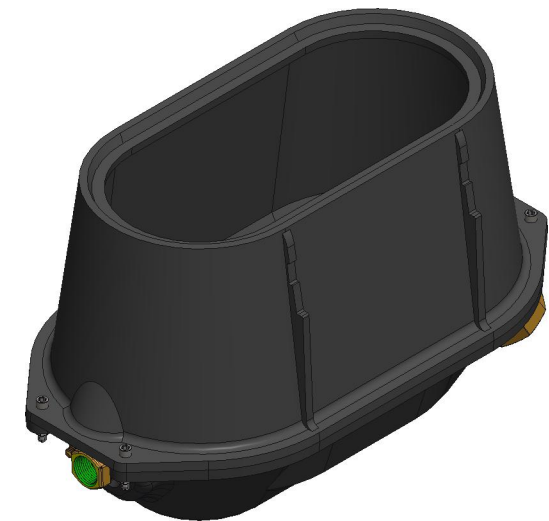


ITEM NO	PART NUMBER	QTY	DESCRIPTION	MATERIAL
1	504041	4	HEX CAP SCREW	YELLOW BRASS ASTM B134 ALLOY C26000
2	532208_REV-C	1	STRETCH BASE TRAY CASTING	CAST IRON ASTM A48 CLASS 25
3	532209_REV-B	1	STRETCH BOX UPPER SECTION	CAST IRON ASTM A48 CLASS 25
4	544622	4	MACHINE SCREW	STAINLESS STEEL
5	544623	4	HEX NUT	STAINLESS STEEL
6	544631	4	1/4" LOCK WASHER 304SS	STAINLESS STEEL
7	089805N	1	5/8" X 3/4" OR 3/4" METER VALVE	LEAD FREE BRASS ALLOY ASTM B584 C89833/C87850
8	250H14234N	1	3/4" HANDWHEEL EXPANSION	LEAD FREE BRASS ALLOY ASTM B584 C89833/C87850
9	333H15429N	1	1" X 3/4" SERVICE FITTING	LEAD FREE BRASS ALLOY ASTM B584 C89833/C87850
10	508563E	1	3/4" INSIDE IP THREAD OUTLET	LEAD FREE BRASS ALLOY ASTM B584 C89833/C87850



OPTION CODE 7:
*LESS METER BOX LID

DR. BY	AOD	8/18/22	UNLESS OTHERWISE NOTED	THIRD ANGLE PROJECTION	C.B. NO.
CHKR			BREAK CAST CORNER(S)---		
ENGR			BREAK MACH CORNER(S)---	PURCH.	FINISH
MGR			TOLERANCES	REF. NO.	PATT. NO.
MFG			UNLESS OTHERWISE NOTED	SCALE	NONE
TOOL			LINEAR	ANGULAR	
FDRY			±	±	STK. NO.

MAT'L:		DESCR. 5/8" X 3/4" CAST IRON METER BOX 7" HEIGHT LOW LEAD BRASS	NUMBER 234H1462--M-7-N

234H1462--M-7-N