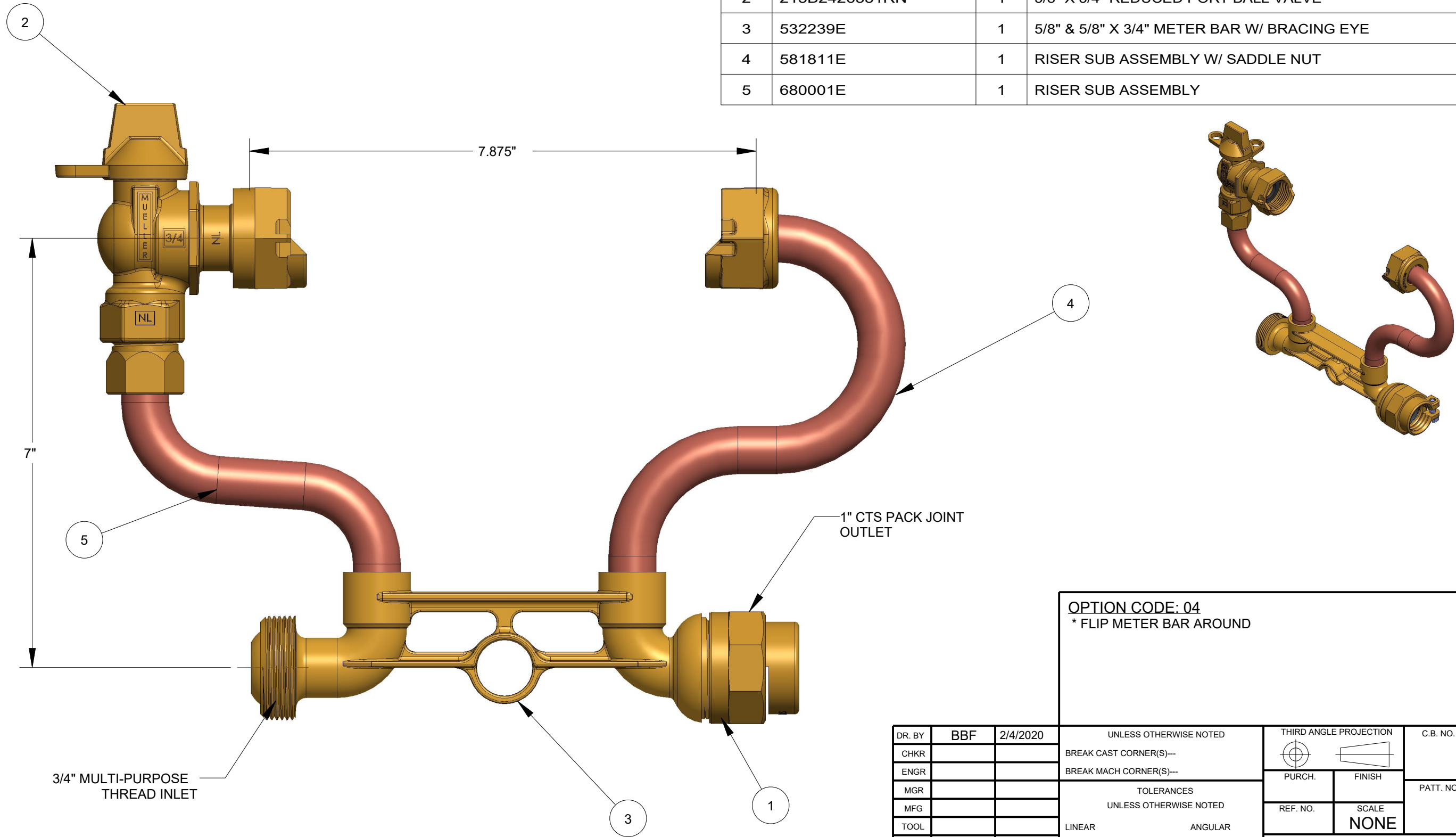


ITEM NO	PART NUMBER	QTY	DESCRIPTION
1	681922	1	1" CTS PACK JOINT
2	215B2426551RN	1	5/8" X 3/4" REDUCED PORT BALL VALVE
3	532239E	1	5/8" & 5/8" X 3/4" METER BAR W/ BRACING EYE
4	581811E	1	RISER SUB ASSEMBLY W/ SADDLE NUT
5	680001E	1	RISER SUB ASSEMBLY



OPTION CODE: 04
 * FLIP METER BAR AROUND

DR. BY	BBF	2/4/2020	UNLESS OTHERWISE NOTED		THIRD ANGLE PROJECTION	C.B. NO.
CHKR			BREAK CAST CORNER(S)---			
ENGR			BREAK MACH CORNER(S)---		PURCH.	PATT. NO.
MGR			TOLERANCES		FINISH	
MFG			UNLESS OTHERWISE NOTED		REF. NO.	SCALE
TOOL			LINEAR	ANGULAR	STK. NO.	NONE
FDRY			±	±		
MATL:						
			DESCR.	5/8"X3/4" COPPER METER SETTER 7" RISER HEIGHT LOW LEAD BRASS	NUMBER	234P25771R--04N

234P25771R--04N