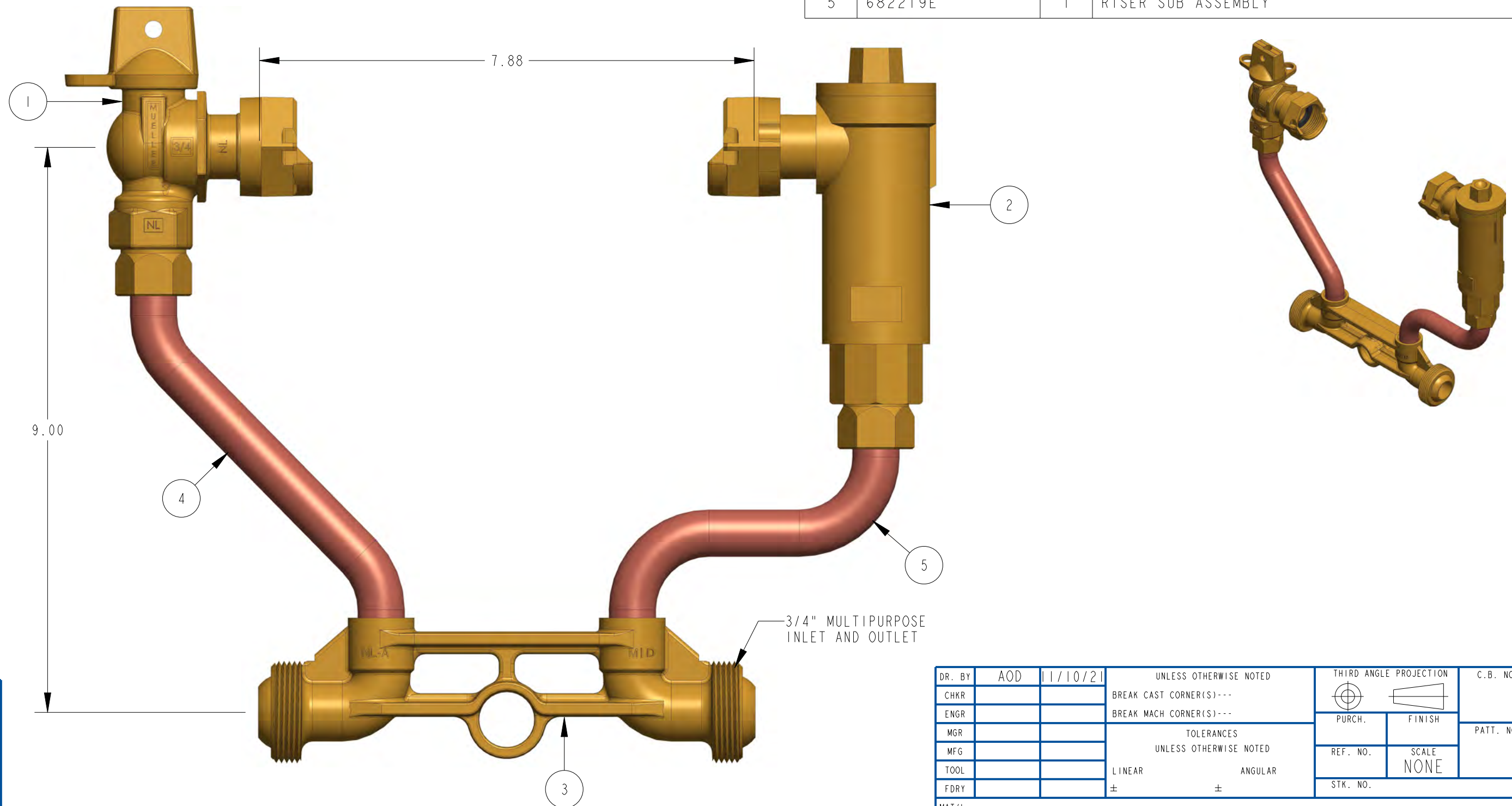


ITEM NO	PART NUMBER	QTY	DESCRIPTION
1	215B2426551RN	1	5/8" X 3/4" REDUCED PORT BALL VALVE
2	215HI4460AN	1	5/8" X 3/4" VERTICAL ASSE APPROVED CHECK VALVE
3	532076E	1	METER BAR 3/4" MULTI-PURPOSE LLB
4	680003E	1	RISER SUB ASSEMBLY
5	682219E	1	RISER SUB ASSEMBLY



236B2404-R6A--N

DR. BY	AOD	11/10/21	UNLESS OTHERWISE NOTED	THIRD ANGLE PROJECTION	C.B. NO.
CHKR			BREAK CAST CORNER(S)---		
ENGR			BREAK MACH CORNER(S)---	PURCH.	FINISH
MGR			TOLERANCES	REF. NO.	PATT. NO.
MFG			UNLESS OTHERWISE NOTED	SCALE	NONE
TOOL			LINEAR	ANGULAR	
FDRY			±	±	STK. NO.
MAT'L:					
MUELLER			DESCR. 5/8" X 3/4" COPPER METER SETTER 9" RISER HEIGHT LOW LEAD BRASS	NUMBER 236B2404-R6A--N	