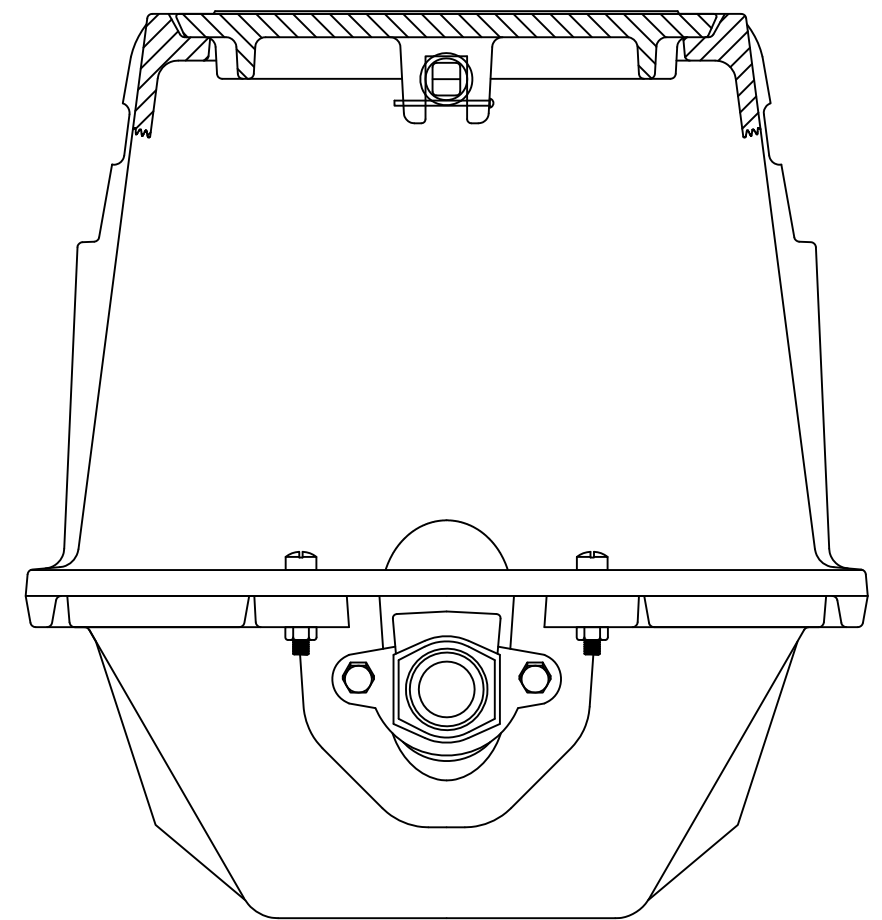
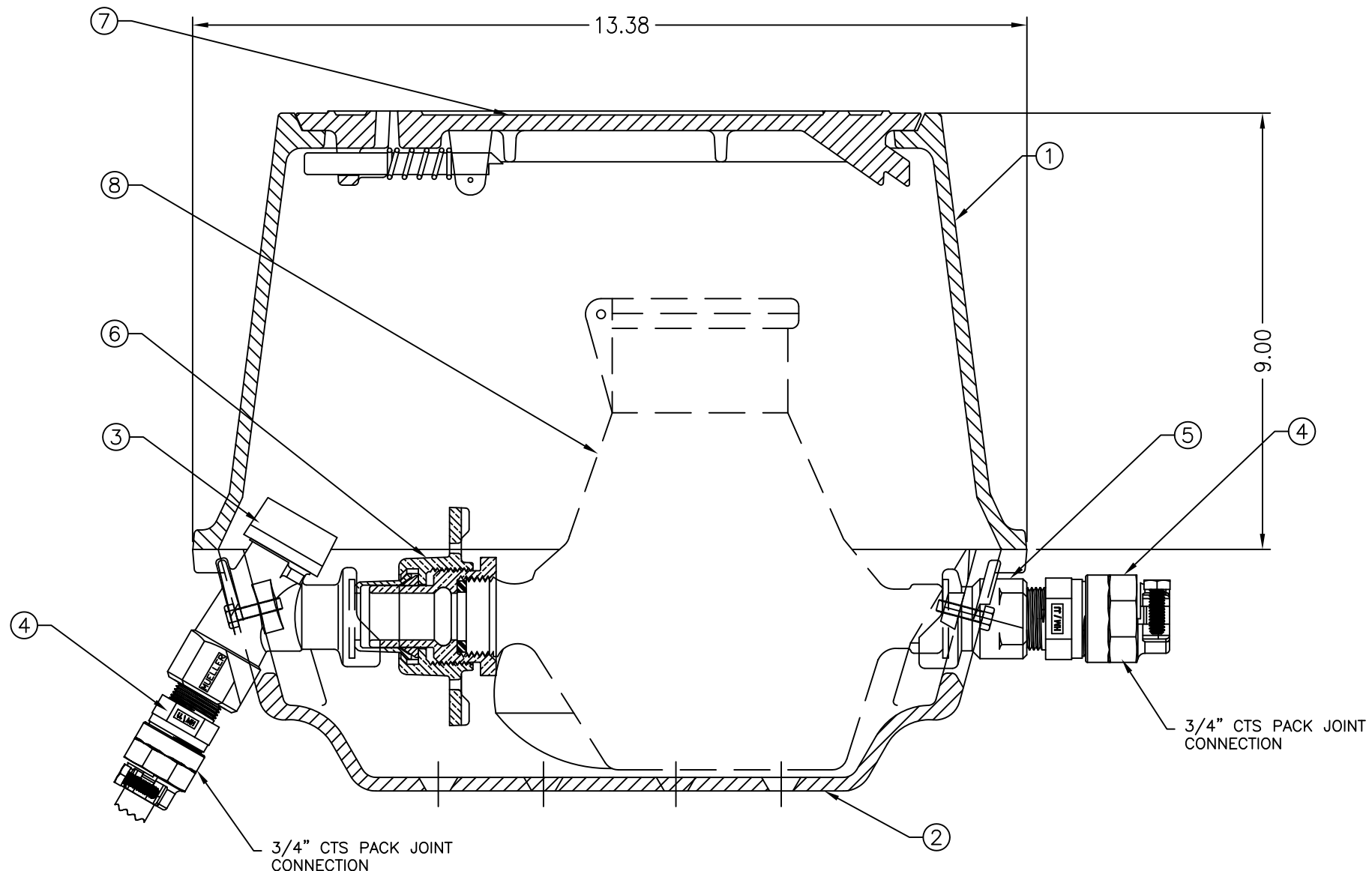


ITEM	DESCRIPTION	PART NO.	REQ'D
1	CAST IRON METER BOX UPPER SECTION		1
2	CAST IRON METER BOX BASE TRAY		1
3	3/4" ANGLE VALVE		1
4	3/4" MIP X CTS PACK JOINT FITTING	P15428N	2
5	3/4" METER COUPLING X 3/4" FIP CONNECTION		1
6	EXPANSION HANDWHEEL	H14234N	1
7	CAST IRON LOCKING METER LID		1
8	METER (NOT INCLUDED)		1



236P1452--A-10N

DRFT'R	BBF	6/15/21	THIRD ANGLE PROJECTION	REF. NO.	SCALE
CHK'R					NONE
E.O. NUMBER				STOCK No.	
			DESCR.	REV.	NUMBER
			5/8" X 3/4" CAST IRON BOX 9" HEIGHT LOW LEAD BRASS	236P1452--A-10N	
				SHEET 1 OF 1	

REV.	DESCRIPTION	REF.	DRFT'R	CHK'R	APP	DATE