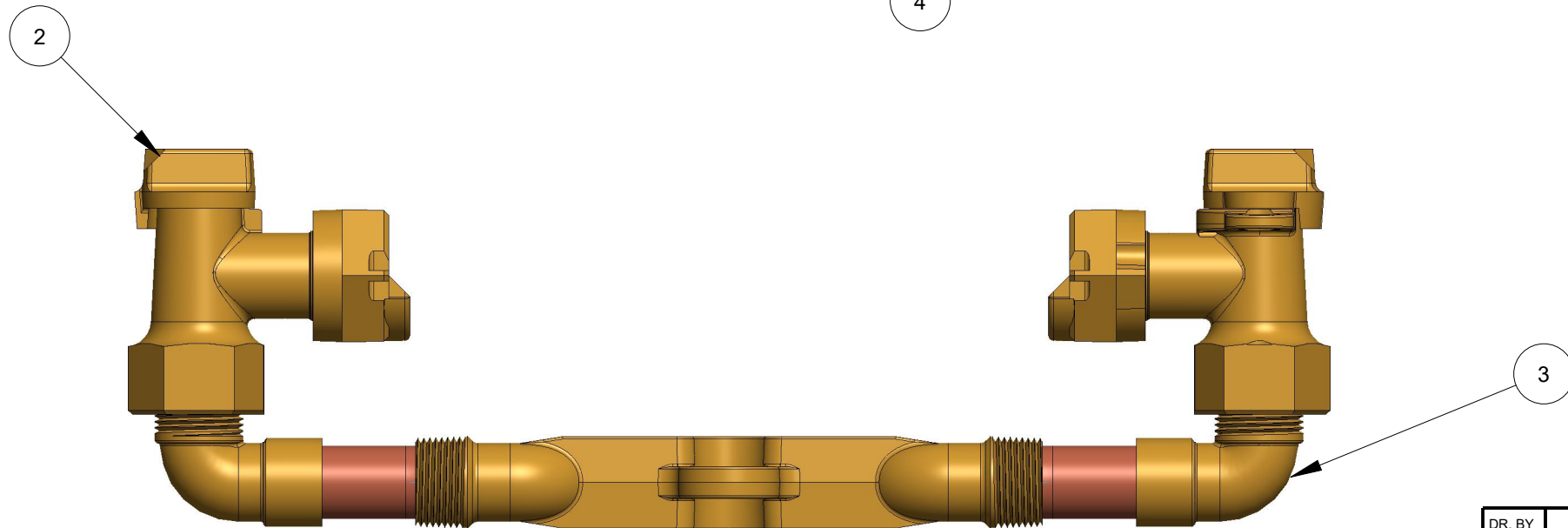
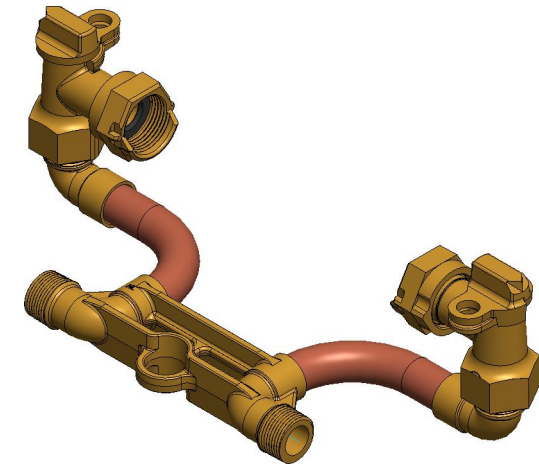
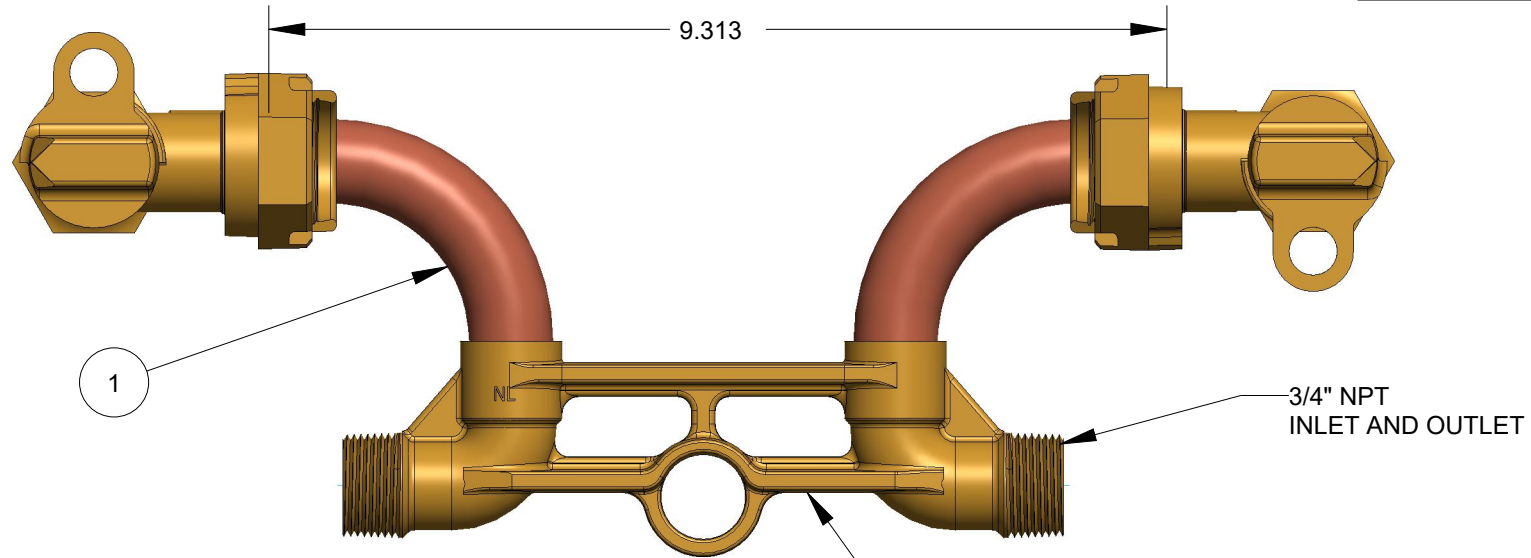


| ITEM NO | PART NUMBER | QTY | DESCRIPTION |
|---------|-------------|-----|-----------------------------|
| 1 | 551109 | 2 | COPPER TUBING |
| 2 | 215H14265 | 2 | 3/4" ANGLE BALL VALVE |
| 3 | 525347E | 2 | SOLDER X NPT ELBOW |
| 4 | 532081E | 1 | METER BAR WITH 3/4" NPT LLB |



OPTION CODE: 00
 *VALVE INSTALLED ON INLET AND OUTLET

| | | | | | |
|--------|-----|---------|-------------------------|------------------------|-----------|
| DR. BY | BBF | 9/23/20 | UNLESS OTHERWISE NOTED | THIRD ANGLE PROJECTION | C.B. NO. |
| CHKR | | | BREAK CAST CORNER(S)--- | | |
| ENGR | | | BREAK MACH CORNER(S)--- | PURCH. | FINISH |
| MGR | | | TOLERANCES | REF. NO. | PATT. NO. |
| MFG | | | UNLESS OTHERWISE NOTED | SCALE | |
| TOOL | | | LINEAR | ANGULAR | |
| FDRY | | | ± | ± | STK. NO. |

| | | |
|-------|---|---------------------------|
| MATL: | | |
| | DESCR. 3/4" COPPER OFFSET METER SETTER LOW LEAD BRASS | NUMBER 250H1443----00N |

250H1443----00N