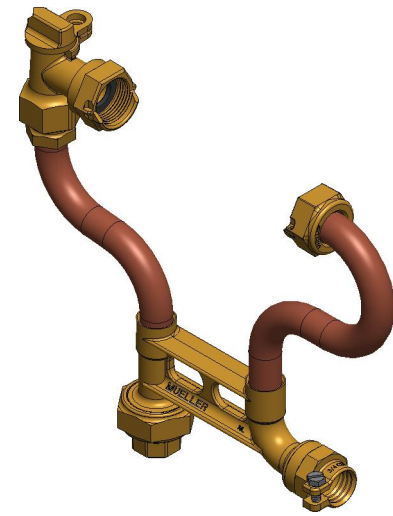
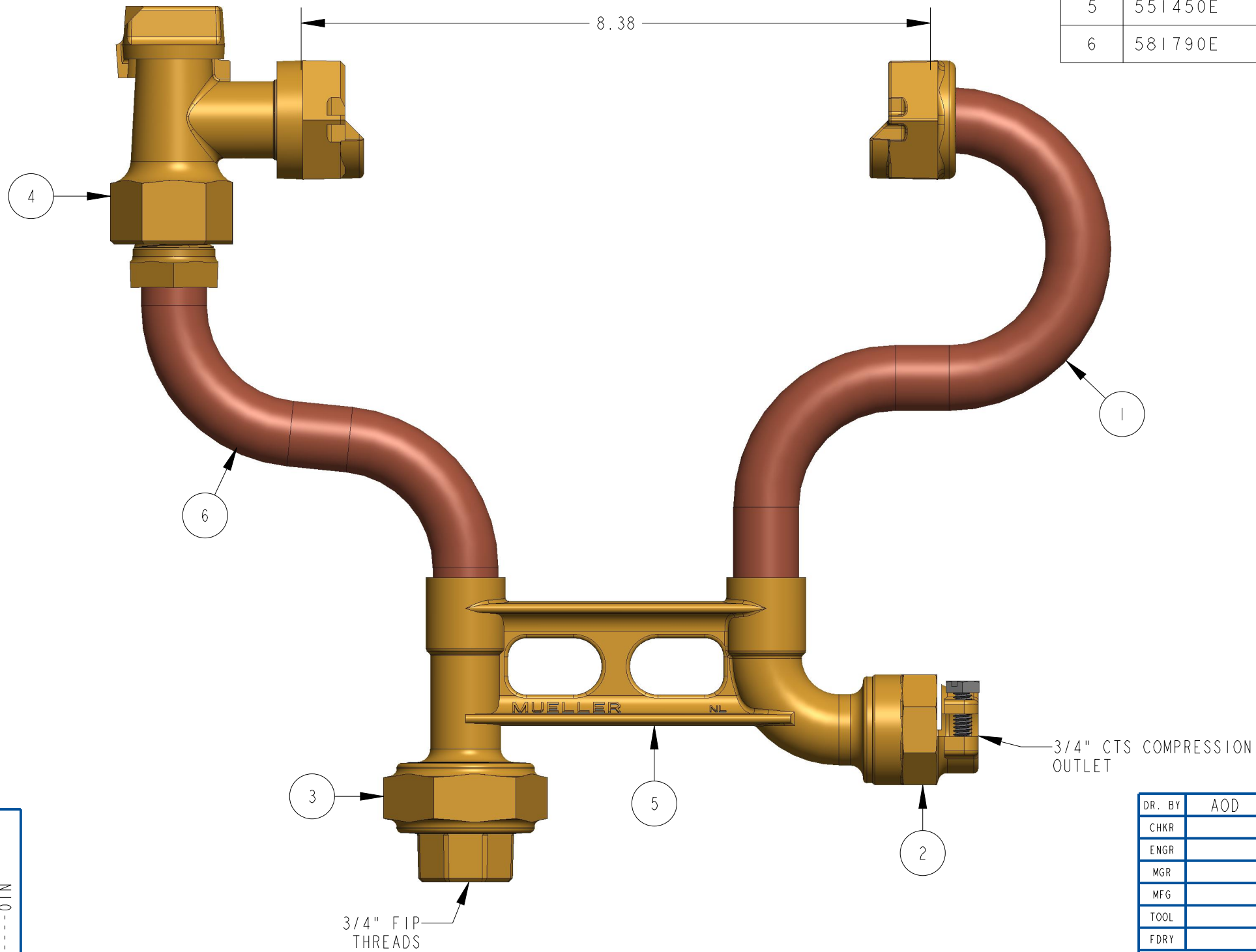


| ITEM NO | PART NUMBER | QTY | DESCRIPTION |
|---------|-------------|-----|--|
| 1 | 581960 | 1 | RISER SUB ASSEMBLY W/ SADDLE NUT |
| 2 | 681921 | 1 | 3/4" PACK JOINT |
| 3 | 215HI4222 | 1 | 3/4" MULTI-PURPOSE X 3/4" FIP TAIL PIECE |
| 4 | 215HI4265 | 1 | 3/4" ANGLE BALL VALVE |
| 5 | 551450E | 1 | 3/4" MULTI PURPOSE X CTS 110 METER BAR |
| 6 | 581790E | 1 | RISER SUB ASSEMBLY |



OPTION CODE 01:

*HI4222 INSTALLED ON INLET

| | | | | | |
|--------|-----|---------|-------------------------|------------------------|-----------|
| DR. BY | AOD | 9/29/21 | UNLESS OTHERWISE NOTED | THIRD ANGLE PROJECTION | C.B. NO. |
| CHKR | | | BREAK CAST CORNER(S)--- | | |
| ENGR | | | BREAK MACH CORNER(S)--- | PURCH. | FINISH |
| MGR | | | TOLERANCES | REF. NO. | PATT. NO. |
| MFG | | | UNLESS OTHERWISE NOTED | SCALE | NONE |
| TOOL | | | LINEAR | ANGULAR | STK. NO. |
| FDRY | | | ± | ± | |

MAT'L:



DESCR. 3/4" COPPER METER SETTER
RISER HEIGHT APPROX. 7"
LOW LEAD BRASS

NUMBER
250P1588----01N

250P1588----01N