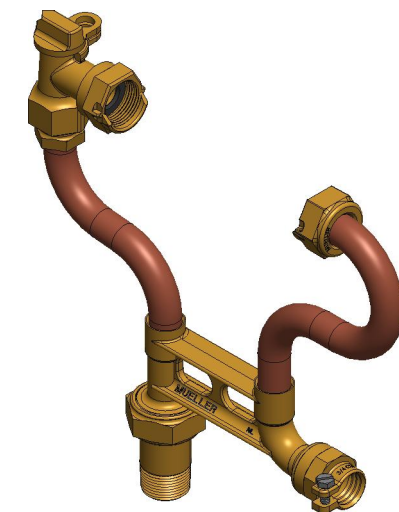
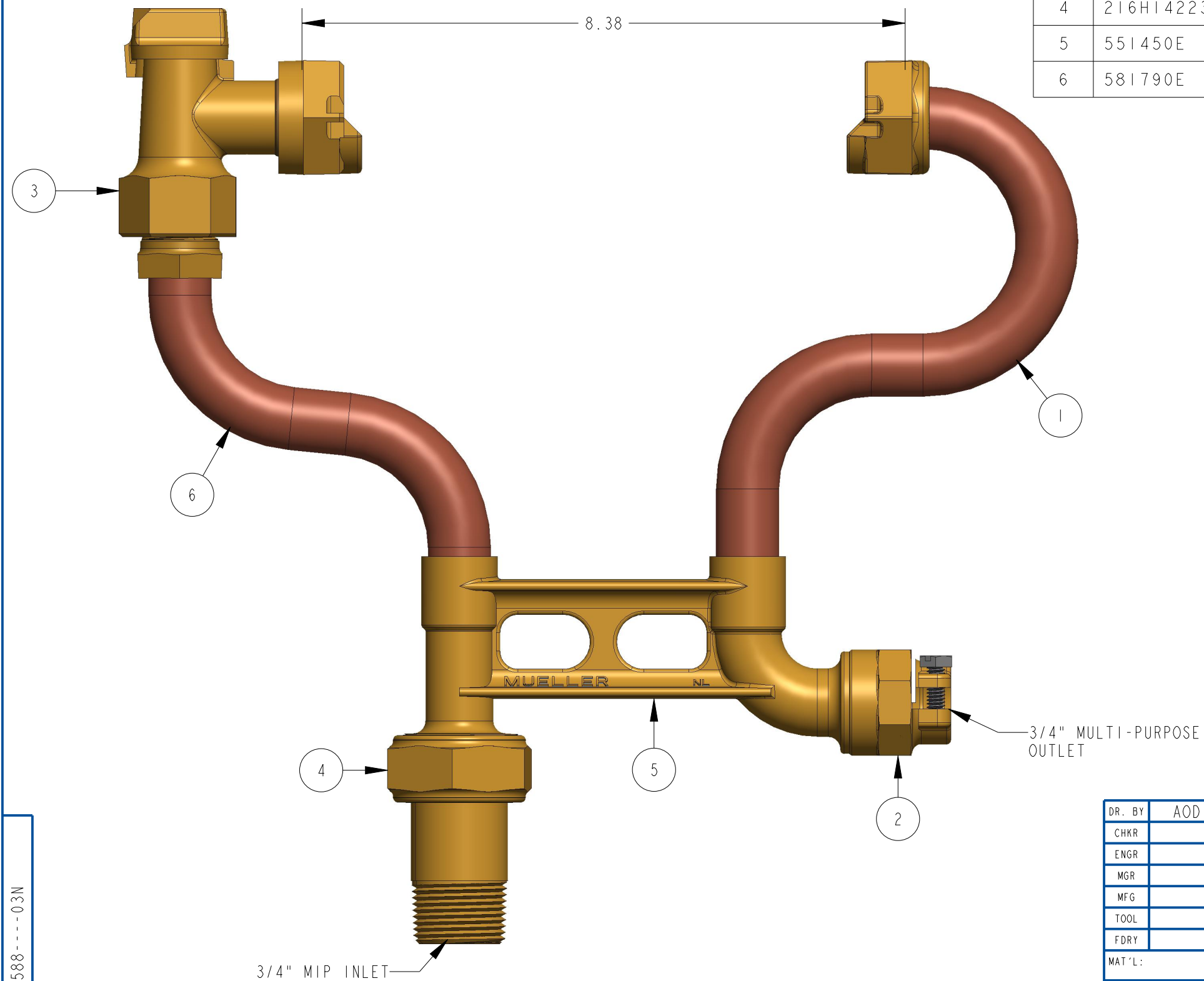


ITEM NO	PART NUMBER	QTY	DESCRIPTION
1	581960	1	RISER SUB ASSEMBLY W/ SADDLE NUT
2	681921	1	3/4" PACK JOINT
3	215HI4265	1	3/4" ANGLE BALL VALVE
4	216HI4223	1	1" MIP THREAD X MULTI-PURPOSE TAILPIECE
5	551450E	1	3/4" MULTI PURPOSE X CTS 110 METER BAR
6	581790E	1	RISER SUB ASSEMBLY



OPTION CODE 03:
 *HI4223 (216N) INSTALLED ON INLET

DR. BY	AOD	9/29/21	UNLESS OTHERWISE NOTED	THIRD ANGLE PROJECTION	C.B. NO.
CHKR			BREAK CAST CORNER(S)---		
ENGR			BREAK MACH CORNER(S)---	PURCH.	PATT. NO.
MGR			TOLERANCES	FINISH	
MFG			UNLESS OTHERWISE NOTED	REF. NO.	SCALE
TOOL			LINEAR		NONE
FDRY			±	ANGULAR	±
MAT'L:				STK. NO.	

MUELLER	DESCR. 3/4" COPPER METER SETTER RISER HEIGHT APPROX. 7" LOW LEAD BRASS	NUMBER 250P1588----03N
----------------	--	---------------------------

250P1588----03N