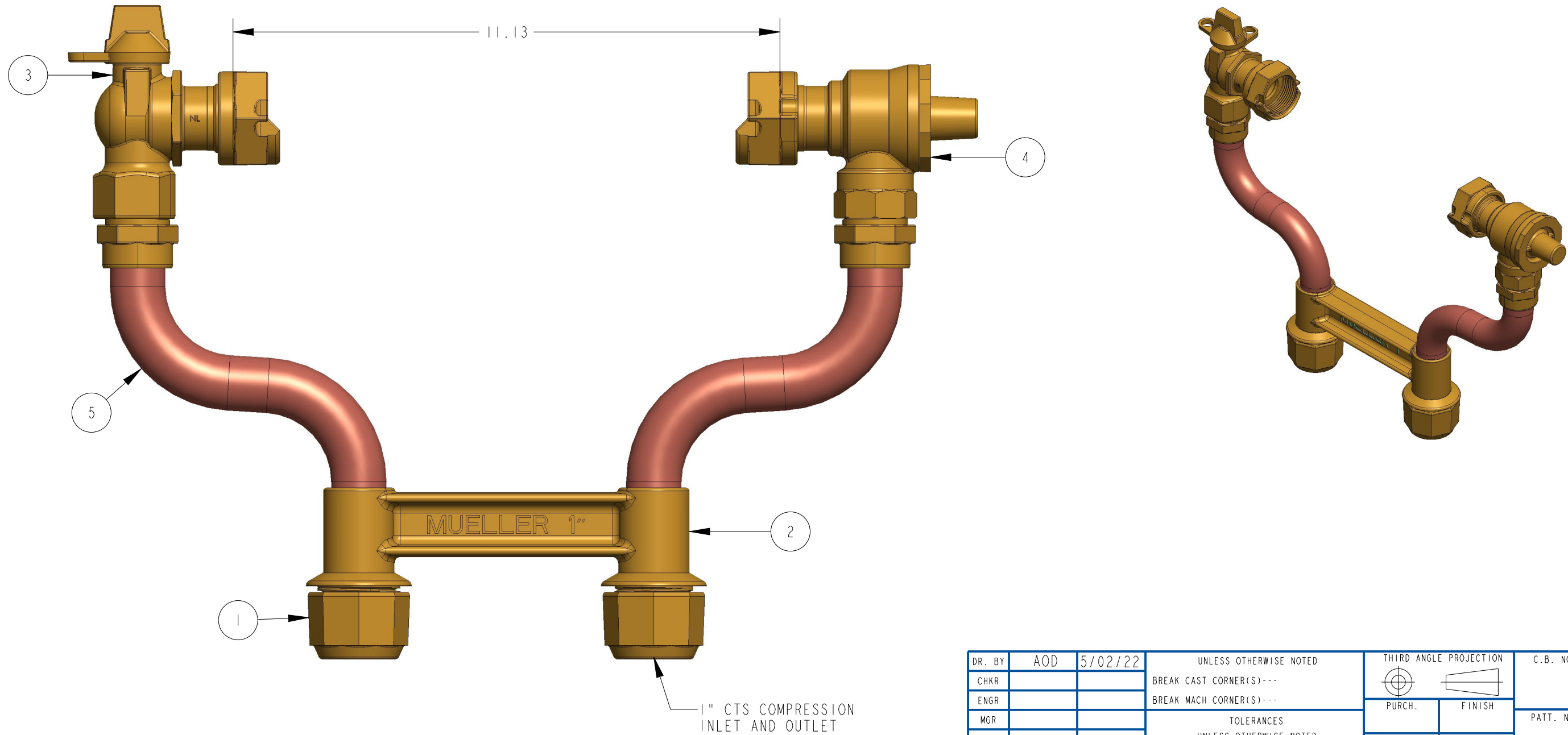


ITEM NO	PART NUMBER	QTY	DESCRIPTION
1	507835	2	1" 110 CONNECTION NUT
2	528017	1	1" H-1474 METER YOKE BODY
3	330B24265R	1	1" REDUCED PORT BALL VALVE
4	330H14244	1	1" DUAL CHECK VALVE
5	680054E	2	10" RISER SUB ASSEMBLY



DR. BY	AOD	5/02/22	UNLESS OTHERWISE NOTED		THIRD ANGLE PROJECTION		C.B. NO.	
CHKR			BREAK CAST CORNER(S)---					
ENGR			BREAK MACH CORNER(S)---		PURCH.	FINISH	PATT. NO.	
MGR			TOLERANCES UNLESS OTHERWISE NOTED		REF. NO.	SCALE		
MFG			LINEAR	ANGULAR	NONE			
TOOL			±	±	STK. NO.			
FDRY			MAT'L:					
			MUELLER		DESCR.	NUMBER		
					1" COPPER METER SETTER LOW LEAD BRASS		330B2474--2---N	

330B2474--2---N