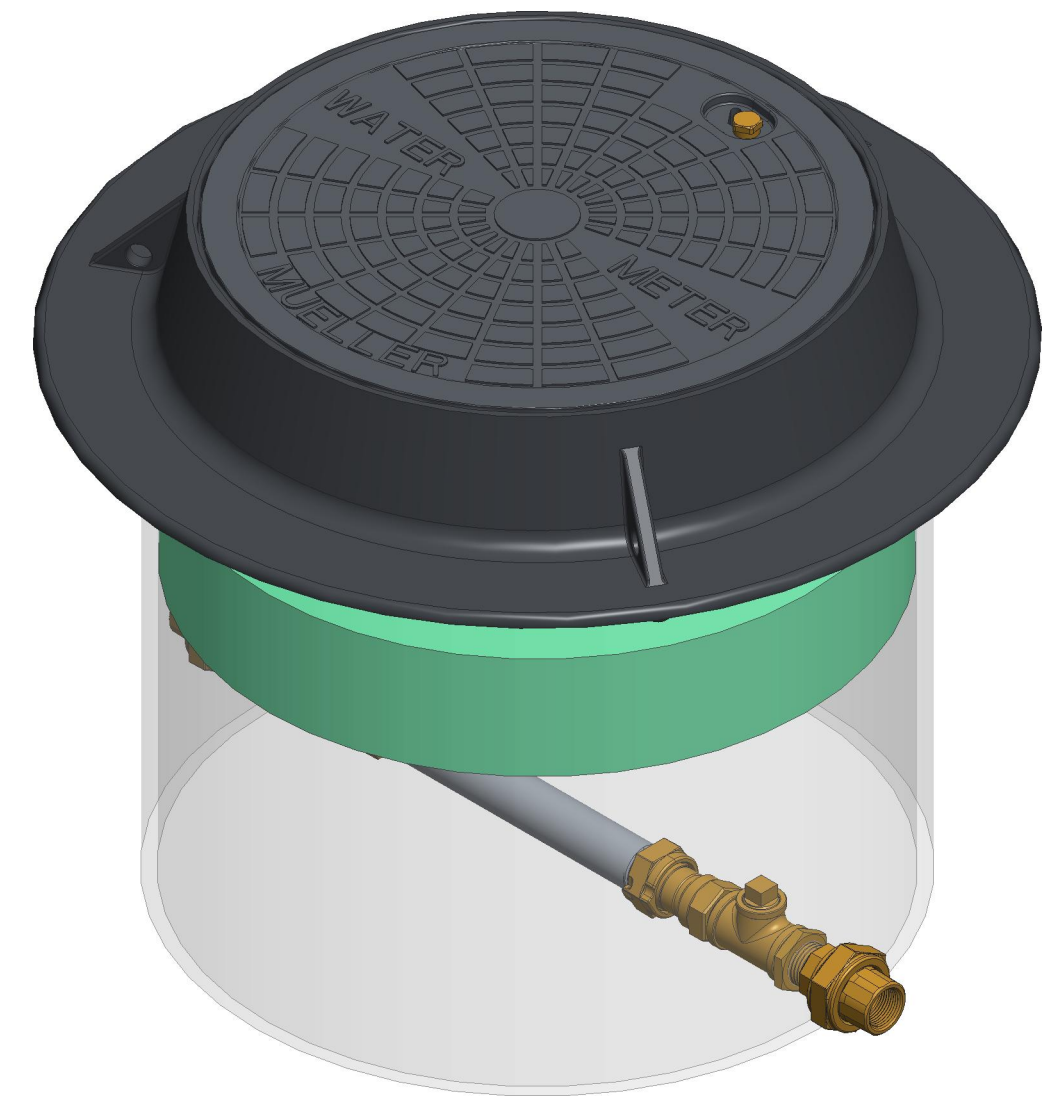
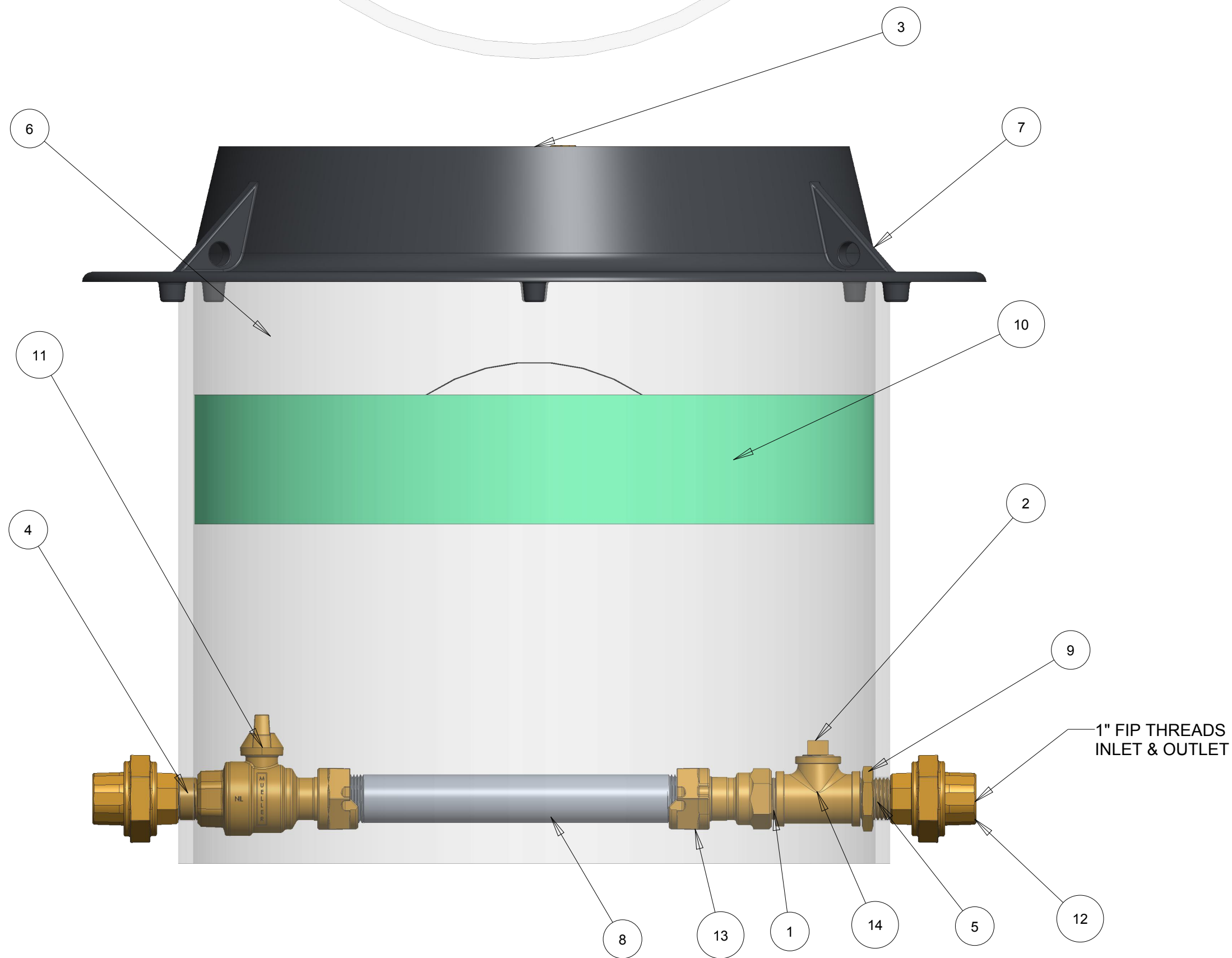


ITEM NO	PART NUMBER	QTY	DESCRIPTION
1	047139	1	1" CLOSED NIPPLE
2	199481	1	3/4" SQUARE HEAD PLUG
3	282925	1	18" DIA CAST IRON SIDE LOCKING LID (OPTIONAL)
4	548412	1	1"X2-1/8" PIPE PART
5	548413	1	1" X 2-1/4" NIPPLE
6	700024-2118	1	21" SHELL
7	700098-1	1	CAST IRON FRAME (OPTIONAL)
8	700250	1	1" METER JUMPER
9	790010	1	1" HEX NUT
10	790322	1	21" X 4" EZ INSULATING PAD (ORDER SEPARATELY)
11	330B24351N	1	1" INLINE BALL VALVE W/ SADDLE NUT
12	330H14211N	2	1" UNION
13	330H14215N	1	1" INLINE METER COUPLING
14	545165E	1	1" FIP X 1"FIP X 3/4" FIP TEE



OPTION CODE: 000646
 * 1"X1"X3/4" FIP TEE AFTER METER COUPLING
 ON OUTLET WITH 3/4" THREADS POINTED VERTICALLY
 * INSTALL A 3/4" PLUG INSIDE TEE
 * H14211 INSTALLED ON INLET & OUTLET
 * NO THREADS EXPOSED OUTSIDE OF PIT

DR. BY	BBF	7/14/17	UNLESS OTHERWISE NOTED		THIRD ANGLE PROJECTION		C.B. NO.
CHKR			BREAK CAST CORNER(S)---				
ENGR			BREAK MACH CORNER(S)---		PURCH.	FINISH	PATT. NO.
MGR			TOLERANCES		REF. NO.	SCALE	
MFG			UNLESS OTHERWISE NOTED				
TOOL			LINEAR	ANGULAR			
FDRY			±	±	STK. NO.		
MATL:							
Mueller Co.			DESCR. 1" INLINE SINGLE METER PIT 21" DIA X 18" DEPTH LOW LEAD BRASS				NUMBER 330IS2118FABS000646N