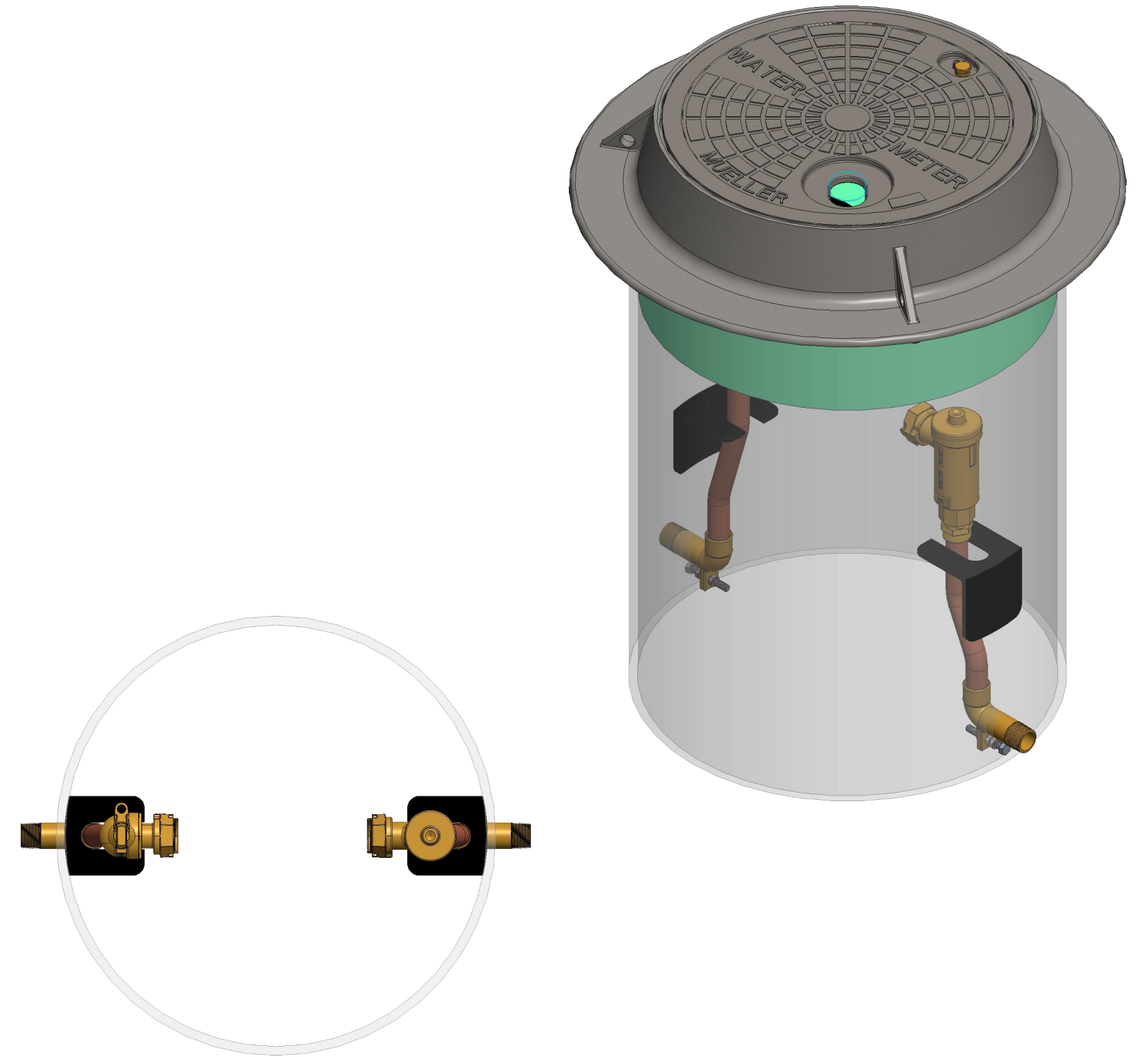
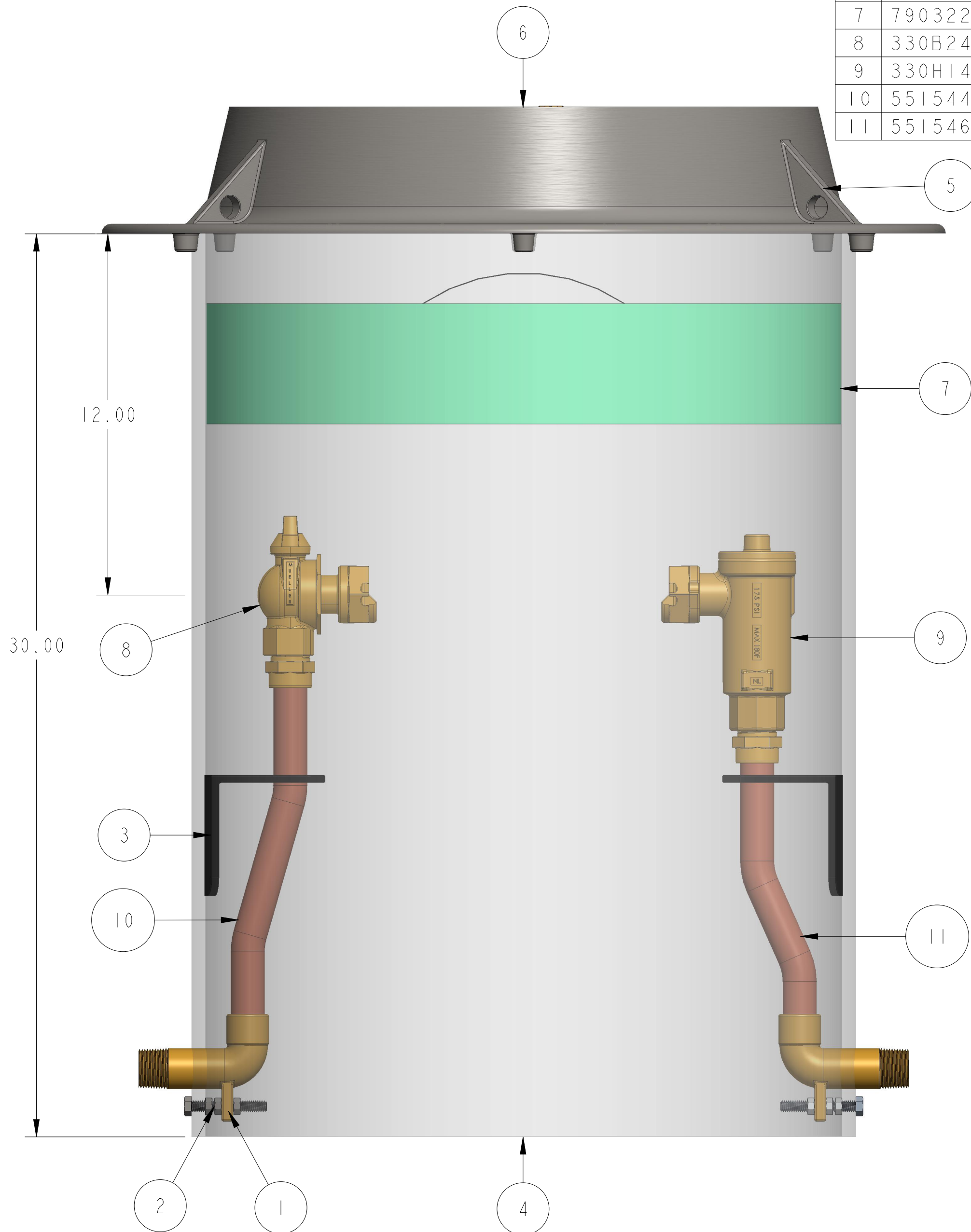


330RCS2130FVBN000237N

ITEM NO	PART NUMBER	QTY	DESCRIPTION
1	190631	2	STAINLESS HEX BOLT
2	194171	6	3/8" HEX NUT
3	547400	2	1" SUPPORT BRACKET
4	700051-2130	1	SHELL SUB ASSEMBLY
5	700098-1	1	CAST IRON FRAME (PURCHASED SEPARATELY)
6	780113	1	18" DIA CAST IRON LID W/ RECESSED TR (SOLD SEPARATELY)
7	790322	1	21" X 4" EZ INSULATING PAD (ORDER SEPARATELY)
8	330B24265	1	1" FULL PORT BALL VALVE
9	330H14460AN	1	1" ASSE APPROVED VERTICAL CHECK
10	551544E	1	RISER SUB ASSEMBLY
11	551546E	1	RISER SUB ASSEMBLY



OPTION CODE 237:  
\*CENTERLINE IS 12" FROM TOP OF PIT

DR. BY	AOD	6/10/21	UNLESS OTHERWISE NOTED	THIRD ANGLE PROJECTION	C.B. NO.
CHKR			BREAK CAST CORNER(S)---		
ENGR			BREAK MACH CORNER(S)---	PURCH.	FINISH
MGR			TOLERANCES	REF. NO.	SCALE
MFG			UNLESS OTHERWISE NOTED	STR. NO.	PATT. NO.
TOOL			LINEAR	ANGULAR	
FDRY			±	±	
MAT'L:					
<b>Mueller Co.</b>			DESCR. 1 IN RIGID SINGLE METER PIT 21" DIA. X 30" DEPTH LOW LEAD BRASS		NUMBER 330RCS2130FVBN000237N