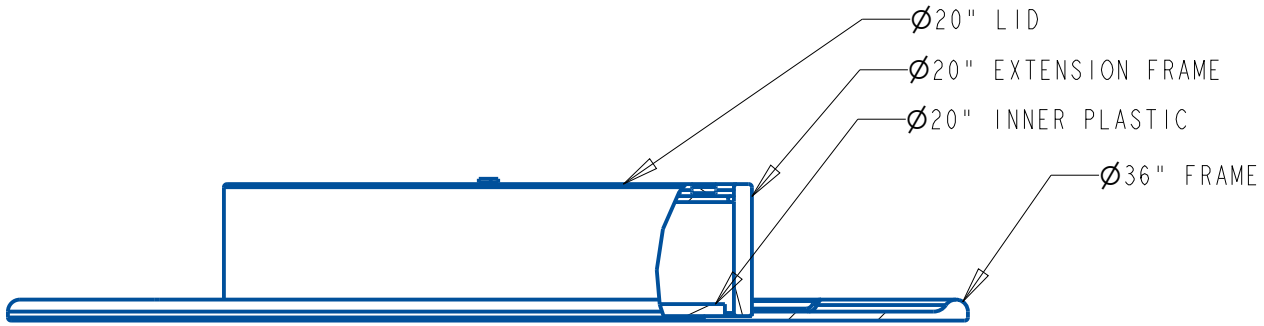
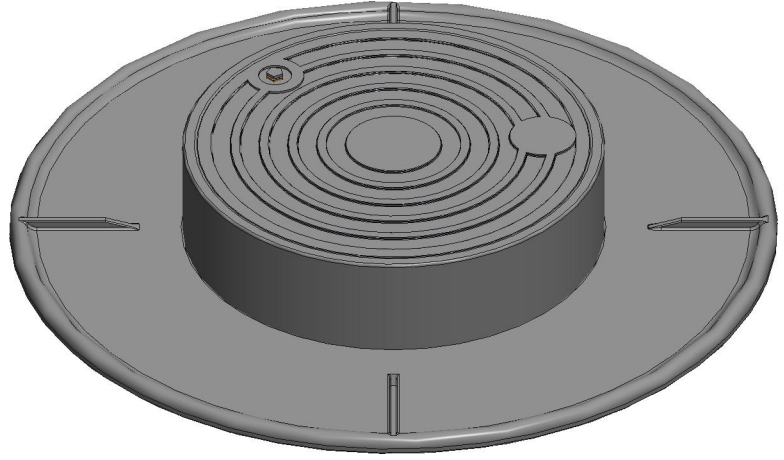
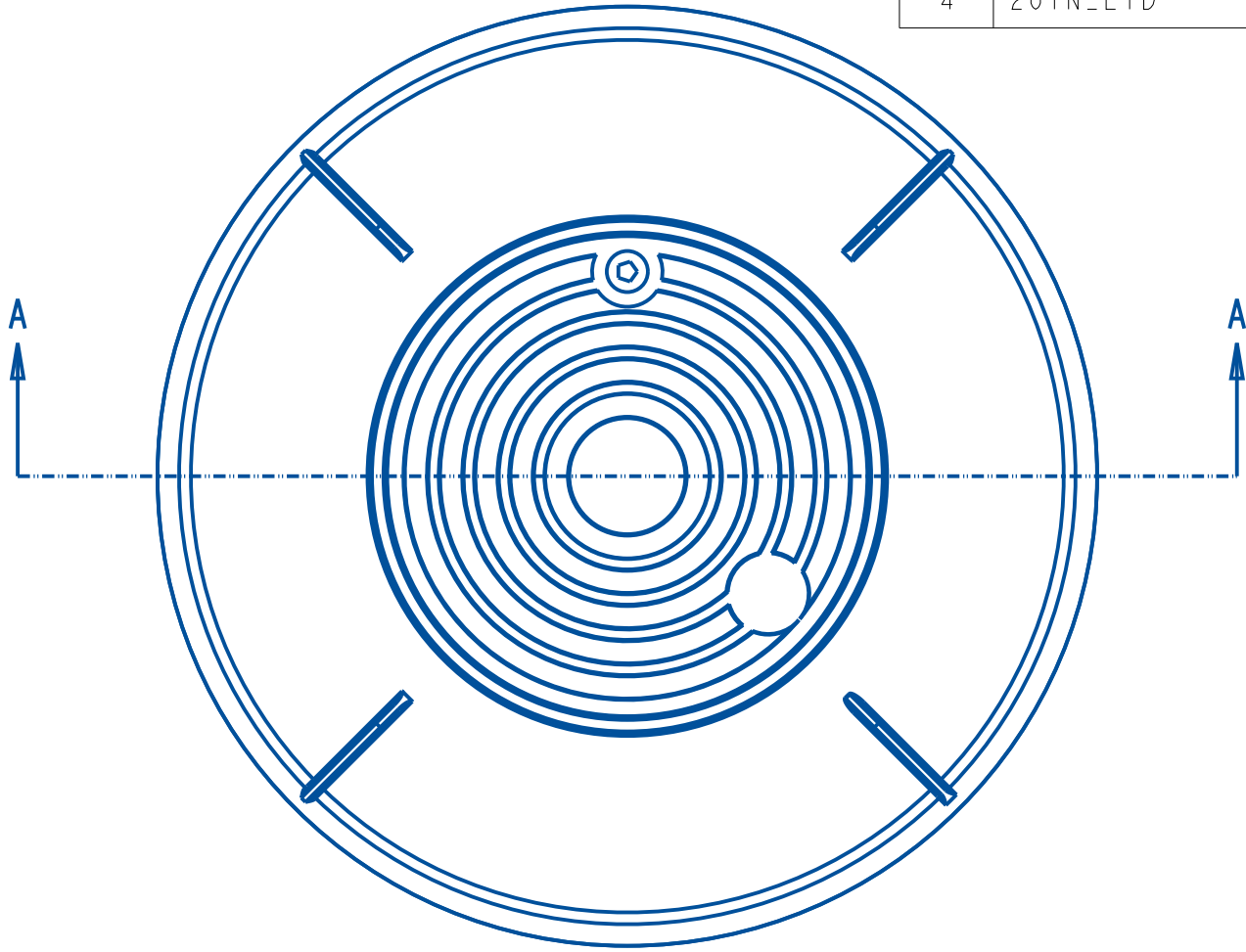


ITEM NO	PART NUMBER	QTY	DESCRIPTION	MATERIAL
1	548403	1	EXPANDER RING	CLASS 30-35 GRAY IRON
2	548404	1	PLASTIC INNER FROST LID	MARINE GRADE POLYMER
3	548834	1	RING AND COVER WITH NO TOUCH-READ	CLASS 30-35 GRAY IRON
4	20IN_LID	1	20" DIA LID	CAST IRON OR COMPOSITE



SECTION A-A  
SCALE 0.125

DR. BY	SLV	0/11/19	UNLESS OTHERWISE NOTED		THIRD ANGLE PROJECTION	C.B. NO.
CHKR			BREAK CAST CORNER(S)---			
ENGR			BREAK MACH CORNER(S)---			
MGR			TOLERANCES		PURCH.	FINISH
MFG			UNLESS OTHERWISE NOTED		REF. NO.	SCALE
TOOL			LINEAR	ANGULAR	NONE	
FDRY			±	±	STK. NO.	
MAT'L:						
<b>MUELLER</b>			DESCR.	Ø36" X Ø20" EXTENSION RING	NUMBER	3620H10814

3620H10814