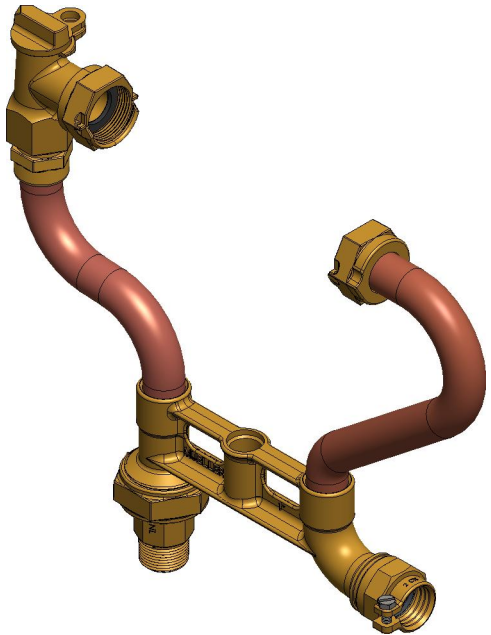
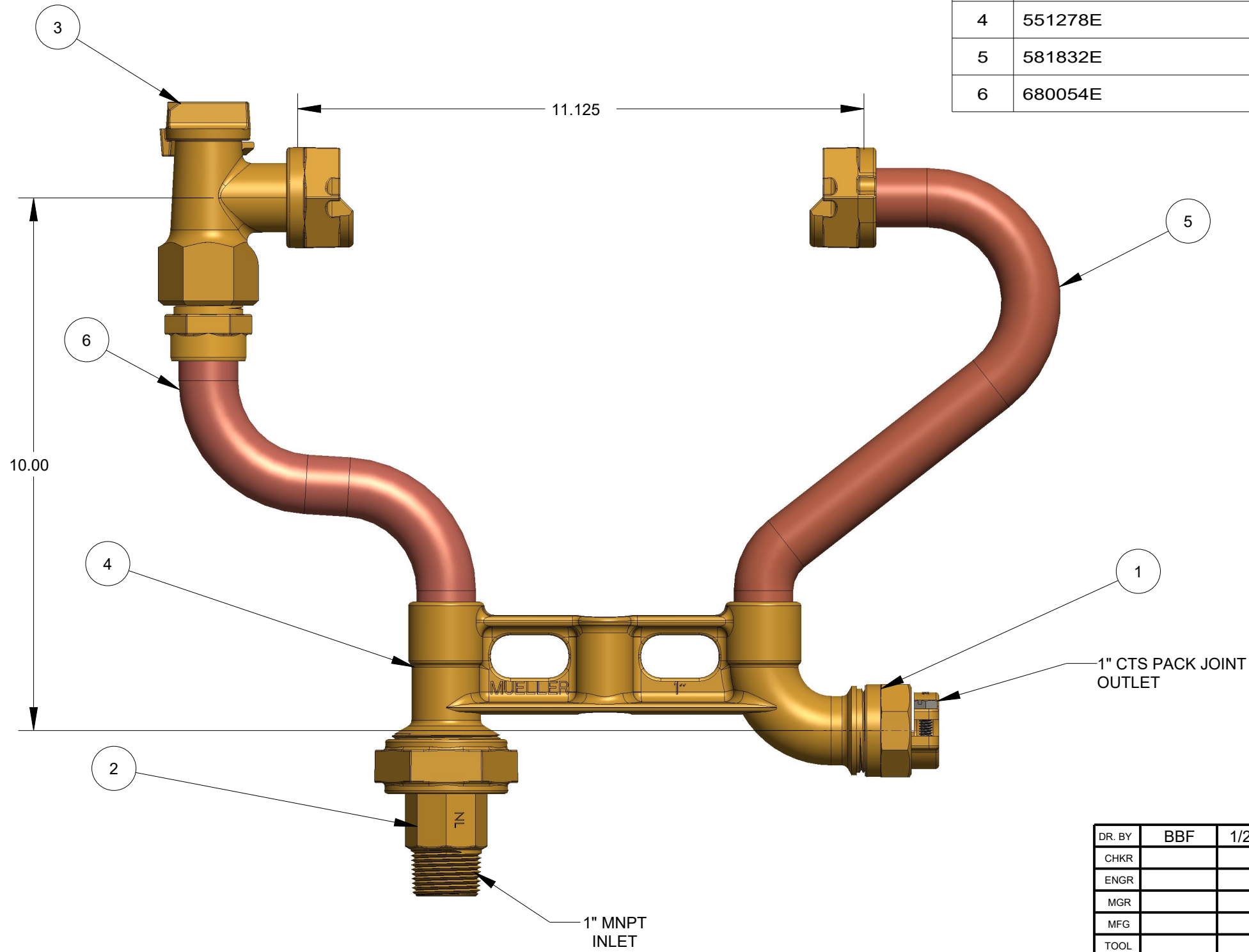


ITEM NO	PART NUMBER	QTY	DESCRIPTION
1	681922	1	1" CTS PACK JOINT
2	330H14223N	1	1" MULTI X MIP THREAD TAILPIECE
3	330H14265	1	1" ANGLE METER STOP VALVE
4	551278E	1	1" VERT. MULTI-PURPOSE X CTS COMP OUTLET
5	581832E	1	RISER SUB ASSEMBLY W/ SADDLE NUT
6	680054E	1	10" RISER SUB ASSEMBLY



OPTION CODE: 02  
 \*H14223 INSTALLED ON INLET

389H1578----02N

DR. BY	BBF	1/27/21	UNLESS OTHERWISE NOTED		THIRD ANGLE PROJECTION		C.B. NO.
CHKR			BREAK CAST CORNER(S)---				
ENGR			BREAK MACH CORNER(S)---		PURCH.	FINISH	PATT. NO.
MGR			TOLERANCES		REF. NO.	SCALE	
MFG			UNLESS OTHERWISE NOTED			NONE	
TOOL			LINEAR	ANGULAR	STK. NO.		
FDRY			±	±			
MATL:							
			DESCR. 1" COPPER METER SETTER 10" RISER HEIGHT LOW LEAD BRASS			NUMBER 389H1578----02N	