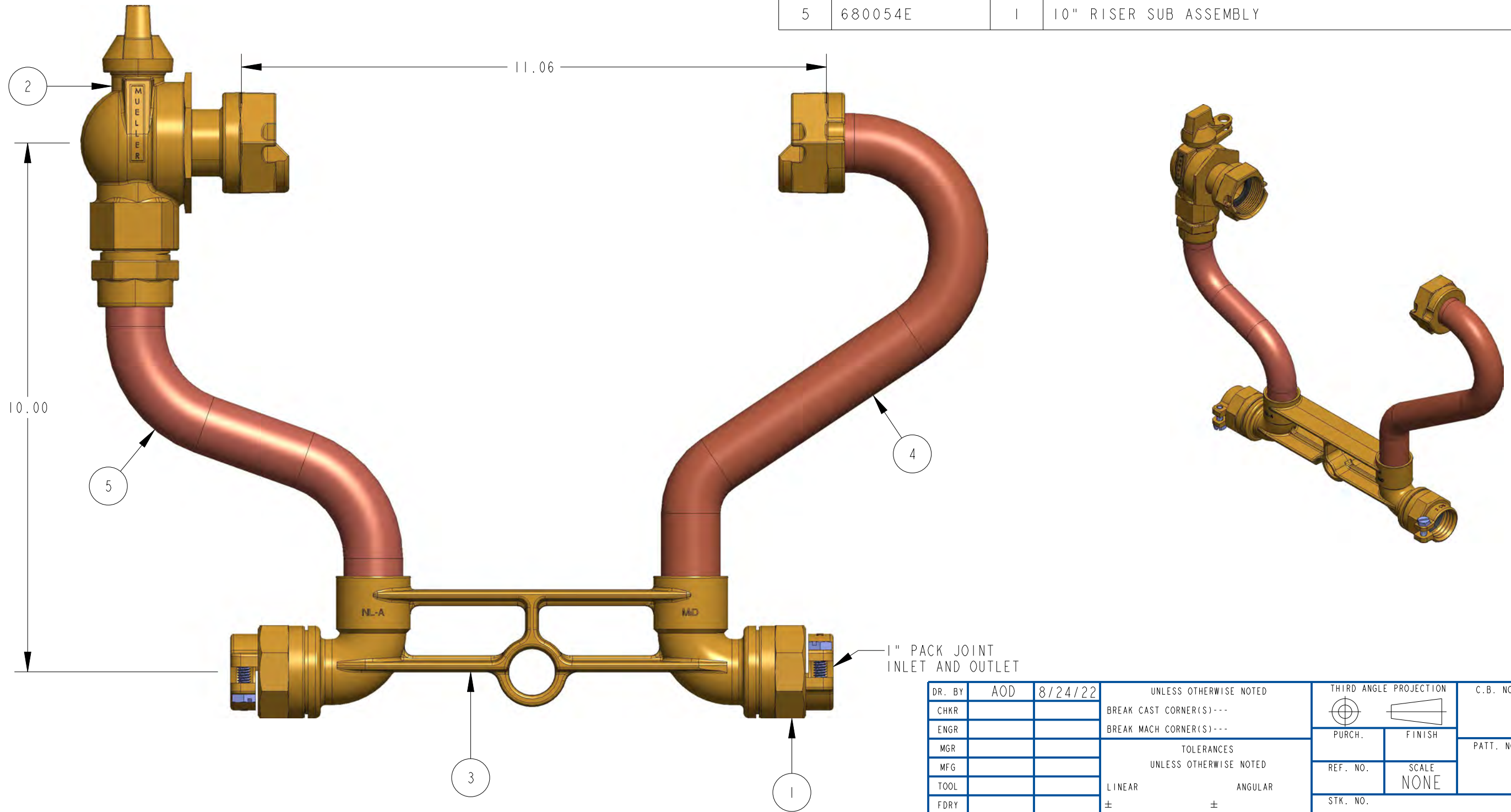


ITEM NO	PART NUMBER	QTY	DESCRIPTION
1	681922	2	1" CTS PACK JOINT
2	330B24265N	1	1" FULL PORT BALL VALVE
3	532219E	1	1" METER BAR W/ COMPRESSION THREADS & BRACING EYE
4	581832E	1	RISER SUB ASSEMBLY W/ SADDLE NUT
5	680054E	1	10" RISER SUB ASSEMBLY



DR. BY	AOD	8/24/22	UNLESS OTHERWISE NOTED		THIRD ANGLE PROJECTION	C.B. NO.
CHKR			BREAK CAST CORNER(S)---			
ENGR			BREAK MACH CORNER(S)---		PURCH.	PATT. NO.
MGR			TOLERANCES		FINISH	
MFG			UNLESS OTHERWISE NOTED		REF. NO.	SCALE
TOOL			LINEAR	ANGULAR	NONE	
FDRY			±	±	STK. NO.	
MAT'L:						
MUELLER			DESCR. 1" COPPER METER SETTER 10" RISER HEIGHT LOW LEAD BRASS		NUMBER 389P2470-----N	

389P2470-----N