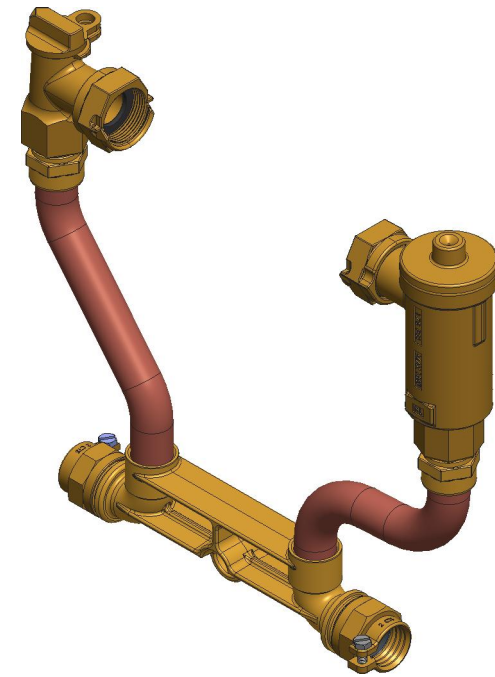
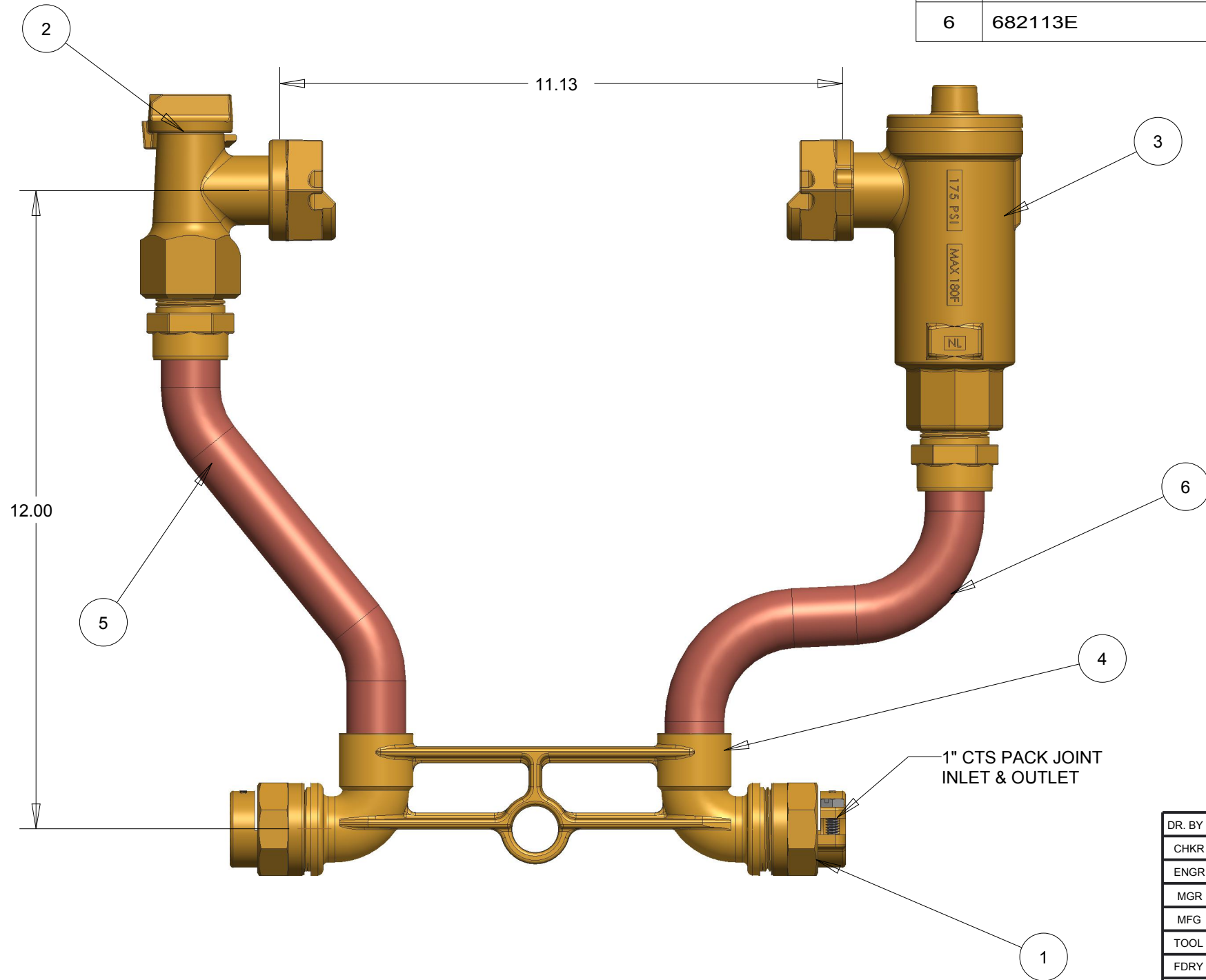


ITEM NO	PART NUMBER	QTY	DESCRIPTION
1	681922	2	1" CTS PACK JOINT
2	330H14265	1	1" ANGLE METER STOP VALVE
3	330H14460AN	1	1" ASSE APPROVED VERTICAL CHECK
4	532219E	1	1" METER BAR W/ COMPRESSION THREADS & BRACING EYE
5	680056E	1	RISER SUB ASSEMBLY
6	682113E	1	RISER SUB ASSEMBLY



390P1470--6A--N

DR. BY	BBF	7/24/17	UNLESS OTHERWISE NOTED		THIRD ANGLE PROJECTION		C.B. NO.
CHKR			BREAK CAST CORNER(S)---				
ENGR			BREAK MACH CORNER(S)---		PURCH.	FINISH	PATT. NO.
MGR			TOLERANCES		REF. NO.	SCALE	
MFG			UNLESS OTHERWISE NOTED			NONE	
TOOL			LINEAR	ANGULAR	STK. NO.		
FDRY			±	±			
MATL:							
			DESCR. 1" COPPER METER SETTER 12" RISER HEIGHT LOW LEAD BRASS			NUMBER 390P1470--6A--N	