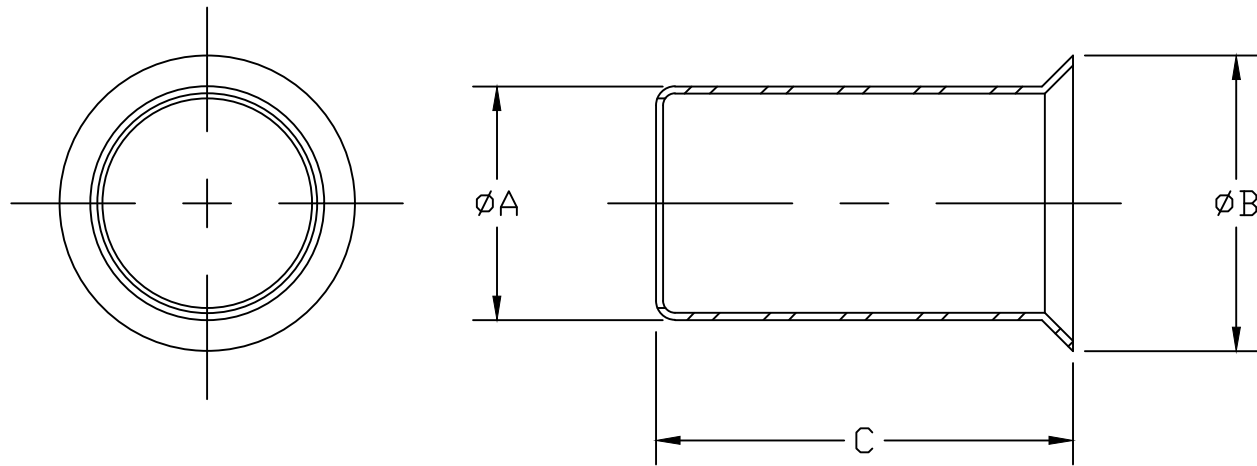


PART NO.	STK No.	'PLASTIC' TUBING		'INSERT'						
		NOM SIZE	MIN I.D.	WALL THKN	'A'	'B'	'C'	'D'	'E'	'F'
504281		3/4" CTS			.653	.830 .810	1.438			
504305		3/4" CTS			.721	.842	1.438			
509897		3/4" CTS			.707	.828	2.000			
505141		3/4" IPS			.805	.906	1.766			
509760		3/4" IPS			.694	.875	1.766			
509759		3/4" IPS			.776	.875	1.766			
504385		1" CTS			.843	1.047	1.750			
504391		1" CTS			.935	1.061	1.750			
504390		1" CTS			.955	1.078	1.750			
509904		1" CTS			.921	1.047	2.125			
505142		1" IPS			1.029	1.220	1.844			
508093		1-1/4" CTS			1.147	1.281	2.062			
312787		1-1/4" IPS			1.356	1.484	3.000			
506139*		1-1/2" CTS			1.217	1.533	2.172			
506140*		1-1/2" CTS			1.357	1.484	2.172			
529116		1-1/2" IPS			1.586	1.718	3.000			
506141*		2" CTS			1.595	2.033	2.297			
506142*		2" CTS			1.750	1.906	2.297			
529117		2" IPS			2.043	2.171	3.000			



TITLE AND OWNERSHIP OF THIS ENGINEERING DATA REMAINS IN Mueller Co. NO USE IS TO BE MADE OF THIS DATA EXCEPT AS SPECIFICALLY AUTHORIZED BY Mueller Co. ASSENT ON THE PART OF THE RECIPIENT TO THESE CONDITIONS IS PRESUMED

ALL INSERTS ARE MADE FROM ASTM A269 TYPE 304 STAINLESS STEEL TUBING

DRFTR	RWB	5/7/19	MUELLER		UNLESS OTHERWISE NOTED THIRD ANGLE PROJECTION SURFACE PREPARATION: BREAK CORNER(S) ----- .016 SURFACE FINISH -- 000 RMS TOLERANCE(S): LINEAR ----- ± .016 ANGULAR ----- ± 0°30'	
CHKR						
ENGR						
MGR						
BY			DATE		REF. No.	SCALE
STK No: SEE CHART			MAT'L: SEE NOTE		DWG NUMBER	FULL
DESCR.			INSERTS FOR PLASTIC TUBING			
REV	ECR	DESCRIPTION	DATE	BY	CHKR	504281
PER EST NO: DXXXX EST FIN WT = 0.0000 lbs						