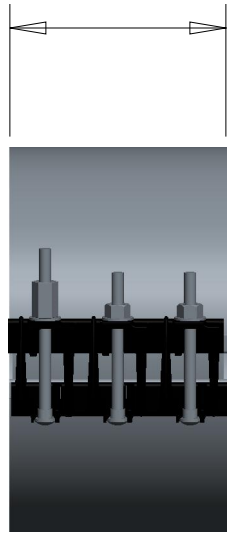
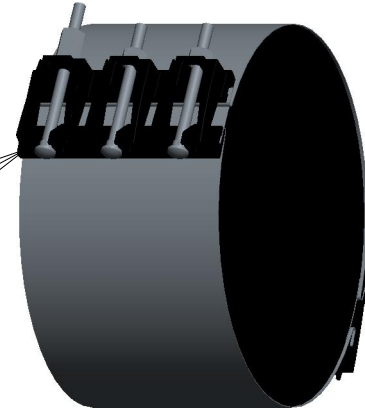


510 SERIES

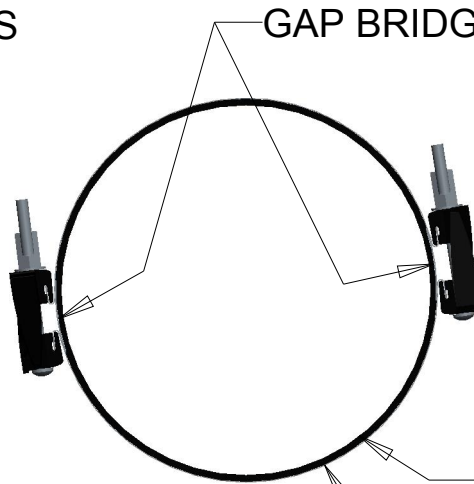


WIDTH
SEE NOTES

DUCTILE IRON
MOUNTING LUGS



GAP BRIDGE, 17 GA



TAPPERED RUBBER GASKET

REPAIR CLAMP BAND
SEE NOTES

NOTES

1. NOMINAL PIPE SIZE RANGE, ϕ 4" - ϕ 36" FOR CAST IRON, DUCTILE IRON, STEEL, A-C AND PVC PIPE.
2. WIDTH VARIES FROM 6" TO 30".
3. REPAIR CLAMP BAND PRODUCED FROM 20 GAUGE ON ALL SIZES.

DR. BY	DLG	03/05/14	UNLESS OTHERWISE NOTED		THIRD ANGLE PROJECTION		C.B. NO.
CHKR			BREAK CAST CORNER(S)---	FLASH FREE			
ENGR			BREAK MACH CORNER(S)---	.006/.016			
MGR			FINISH SURFACES --- $125\sqrt{\text{ }}$		PURCH.	FINISH	PATT. NO.
MFG			TOLERANCES		REF. NO.	SCALE	
TOOL			UNLESS OTHERWISE NOTED		STK. NO.		
FDRY			DECIMALS	FRACTIONS	ANGULAR		
			2 PL± .025	± 1/64	± 1°		
			3 PL± .010				
MAT'L: 304L STAINLESS STEEL							
			DESCR.			NUMBER	
			ALL 510 SERIES REPAIR CLAMPS			510 SERIES	