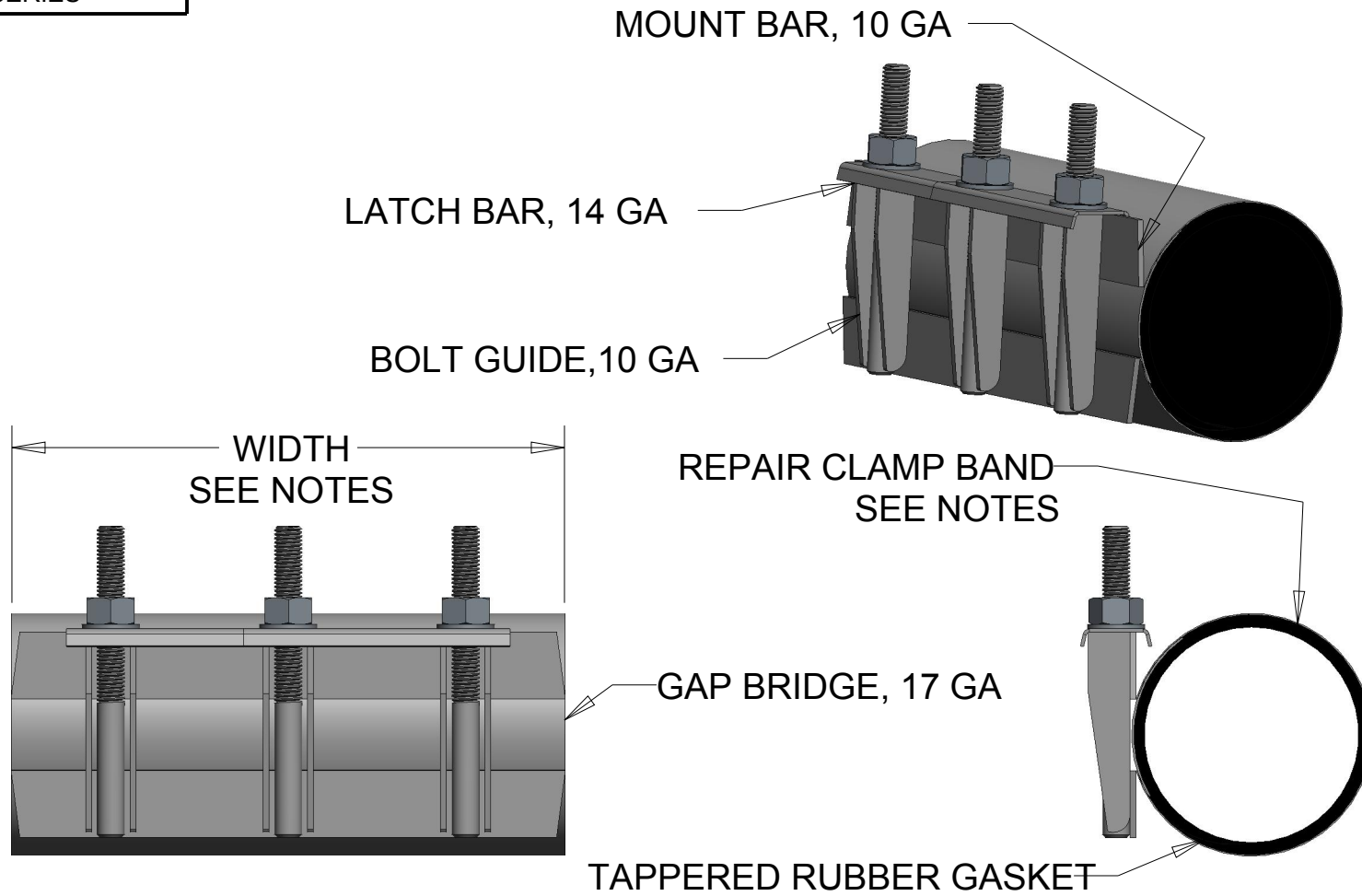


540 SERIES



NOTES

1. NOMINAL PIPE SIZE RANGE, \varnothing 2" - \varnothing 12" FOR CAST IRON, DUCTILE IRON, STEEL, A-C AND PVC PIPE.
3. WIDTH VARIES FROM 7.5" TO 30".
2. REPAIR CLAMP BAND PRODUCED FROM 24 GAUGE WHEN USED ON PIPE UNDER \varnothing 4", 20 GAUGE WHEN USED ON \varnothing 4" PIPE AND OVER.

DR. BY	DLG	03/03/14	UNLESS OTHERWISE NOTED		THIRD ANGLE PROJECTION		C.B. NO.	
CHKR			BREAK CAST CORNER(S)---	FLASH FREE			PATT. NO.	
ENGR			BREAK MACH CORNER(S)---	.006/.016				
MGR			FINISH SURFACES --- $125\sqrt{\quad}$		PURCH.	FINISH	STK. NO.	
MFG			TOLERANCES		REF. NO.	SCALE		
TOOL			UNLESS OTHERWISE NOTED					
FDRY			DECIMALS	FRACTIONS	ANGULAR			
			2 PL± .025	± 1/64	± 1°			
			3 PL± .010					
MAT'L: 304L STAINLESS STEEL			DESCR.				NUMBER	
			ALL 540 SERIES REPAIR CLAMPS				540 SERIES	