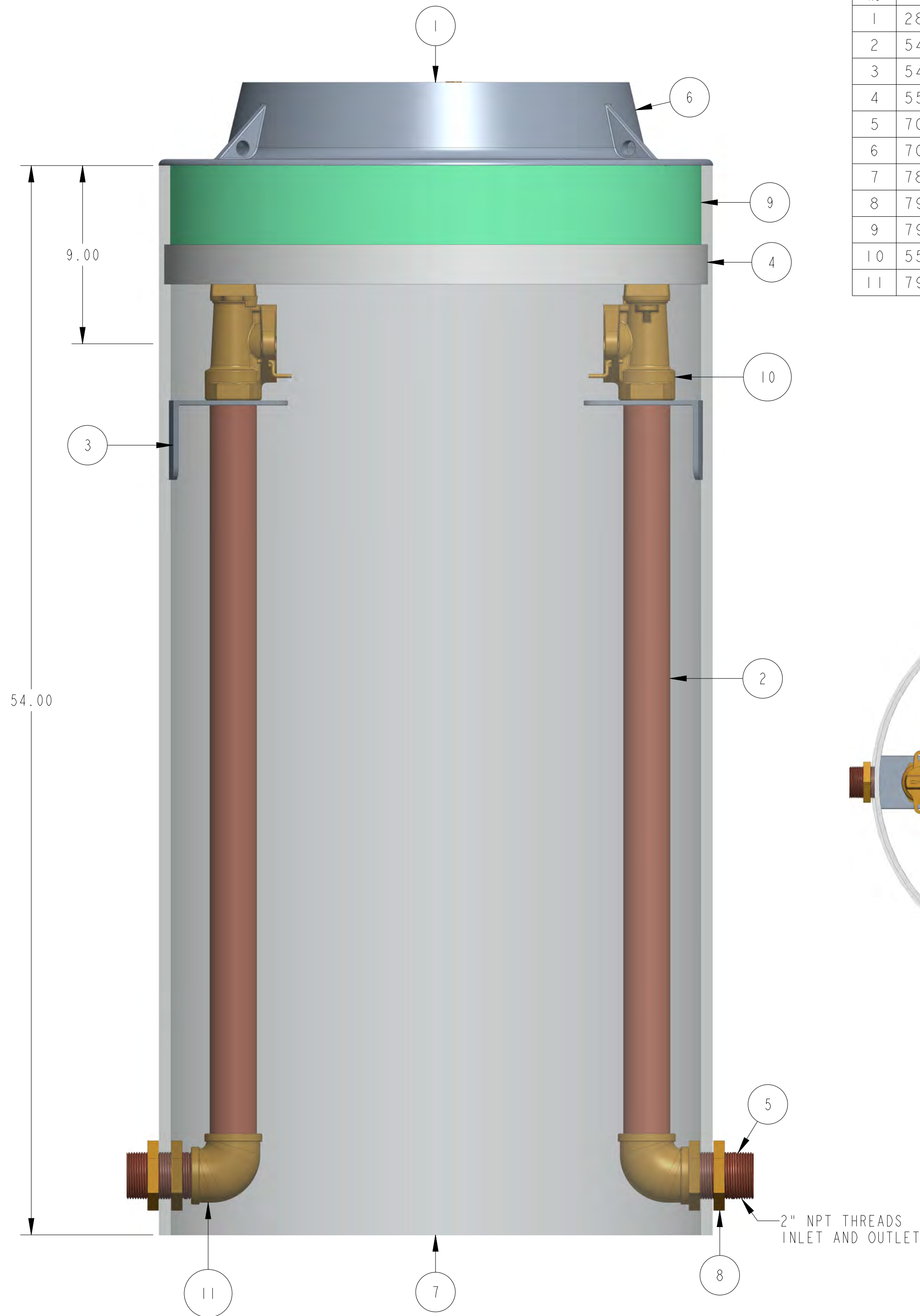
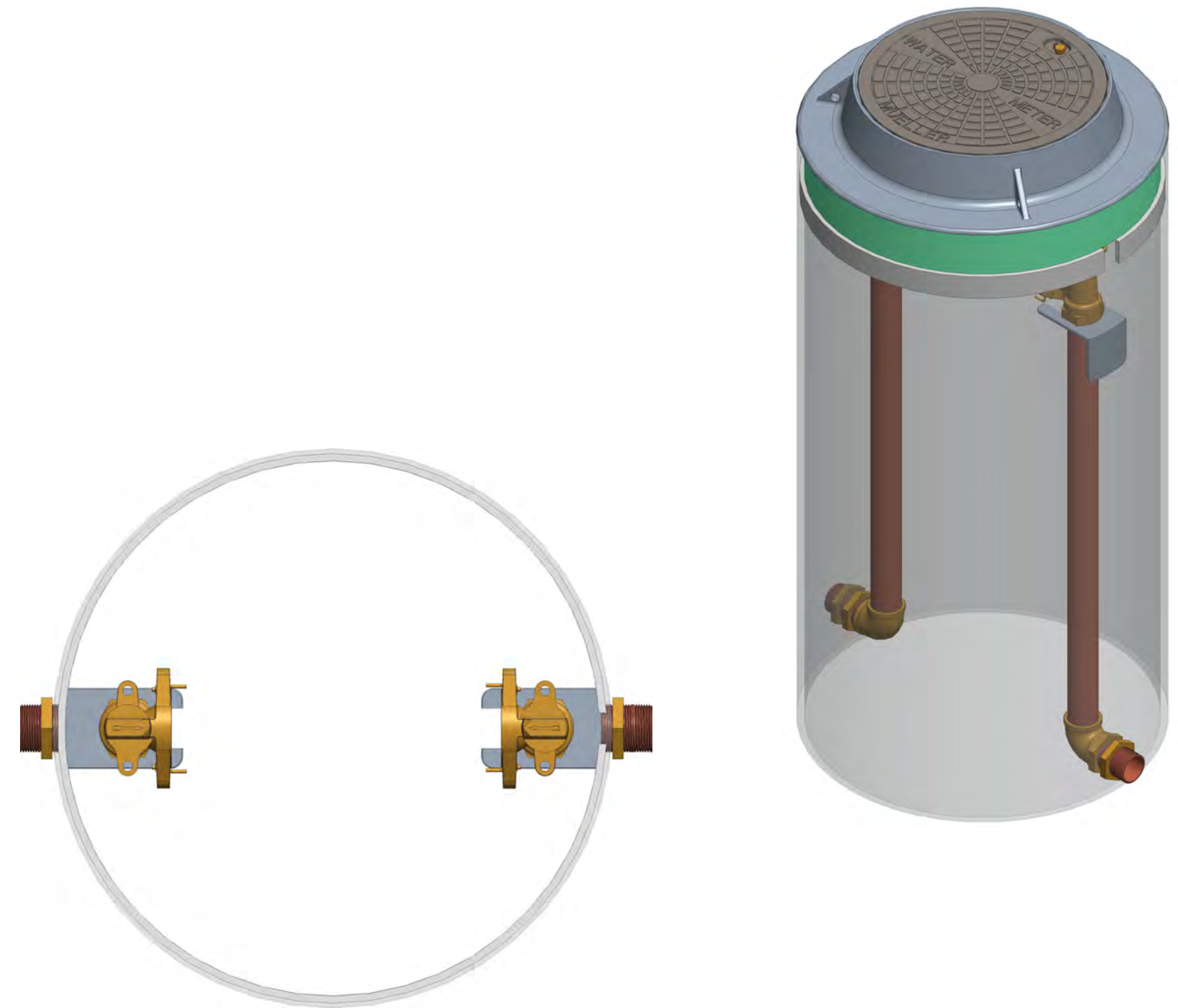


550VS2754LLBN000276N



ITEM NO	PART NUMBER	QTY	DESCRIPTION
1	282925	1	18" DIA CAST IRON SIDE LOCKING LID (SOLD SEPARATELY)
2	546314	2	2" THREADED PIPE
3	547404	2	SUPPORT BRACKET
4	551860	1	SUPPORT BRACKET
5	700009	2	BULKHEAD NIPPLE
6	700098-1	1	CAST IRON FRAME (PURCHASED SEPARATELY)
7	780007-2754	1	SHELL SUB ASSEMBLY
8	790043	4	2" HEX NUT
9	790058	1	27" X 4" INSULATION PAD (PURCHASED SEPARATELY)
10	550H1428601N	2	2" ANGLE METER STOP
11	790041E	2	ELBOW



OPTION CODE 276:

*CENTERLINE OF METER IS 9" FROM TOP OF SHELL

DR. BY	AOD	1/13/22	UNLESS OTHERWISE NOTED	THIRD ANGLE PROJECTION		C.B. NO.
CHKR			BREAK CAST CORNER(S)---			PATT. NO.
ENGR			BREAK MACH CORNER(S)---			
MGR			TOLERANCES	REF. NO.	SCALE	STR. NO.
MFG			UNLESS OTHERWISE NOTED			
TOOL			LINEAR	ANGULAR		
FDRY			±	±		
MAT'L:						
			DESCR. 2" VAULT SINGLE METER PIT 27" DIA X 54" DEPTH LOW LEAD BRASS		NUMBER 550VS2754LLBN000276N	