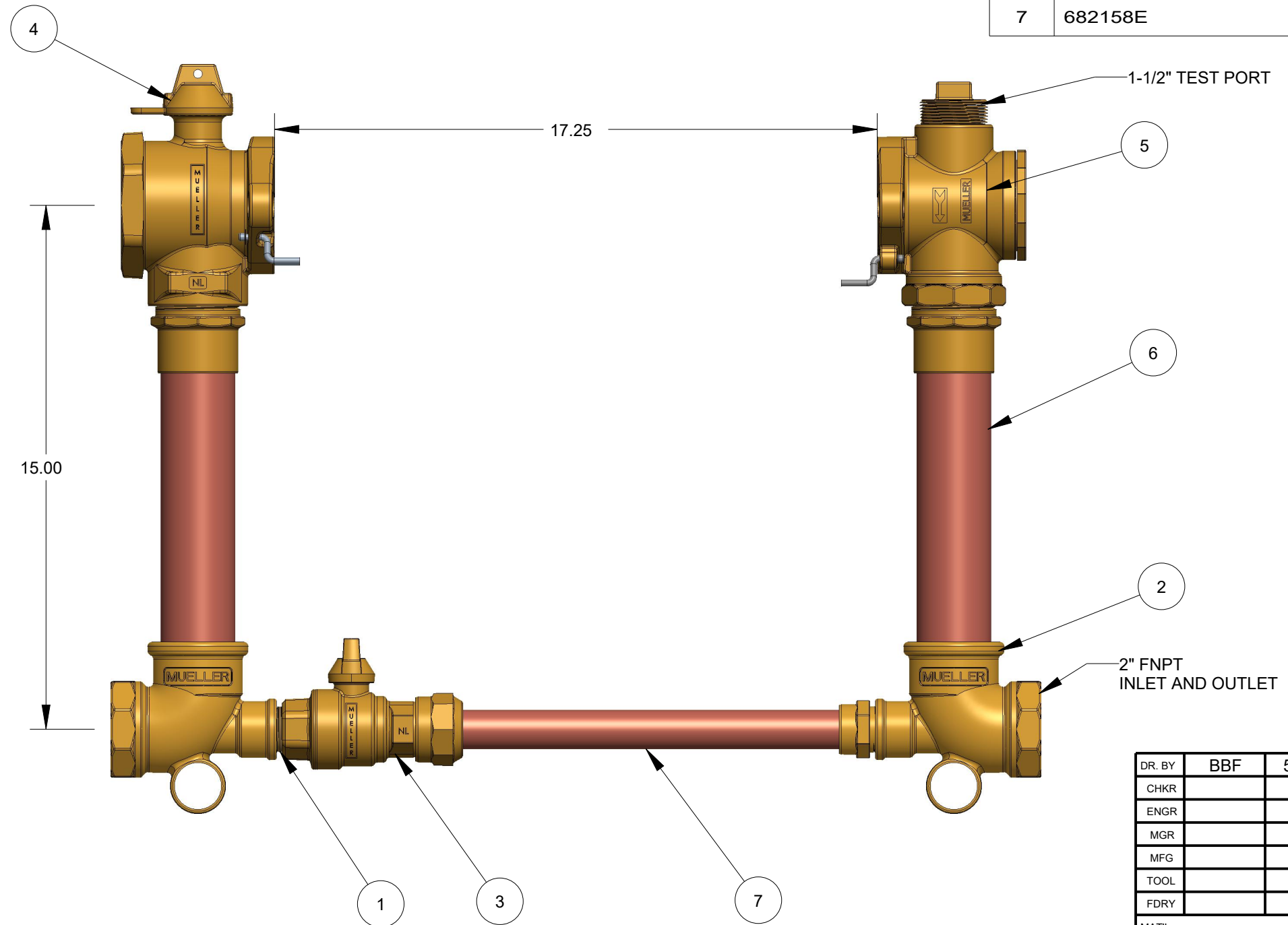


ITEM NO	PART NUMBER	QTY	DESCRIPTION
1	047139	1	1" CLOSED NIPPLE
2	530146	2	TEE (2" FIP X 2" SOLDER X 1" FIP)
3	330B25170N	1	1" INLINE BALL VALVE (110 X FIP)
4	550B2428601N	1	2" FULL PORT BALL VALVE
5	550H14244TPN	1	2" DUAL CHECK VALVE WITH TEST PORT
6	680379E	2	RISER SUB ASSEMBLY
7	682158E	1	BY PASS SUB ASSEMBLY



OPTION CODE: 01
 * LESS CHECK VALVE ON BY-PASS

DR. BY	BBF	5/1/20	UNLESS OTHERWISE NOTED		THIRD ANGLE PROJECTION		C.B. NO.
CHKR			BREAK CAST CORNER(S)---				
ENGR			BREAK MACH CORNER(S)---		PURCH.	FINISH	PATT. NO.
MGR			TOLERANCES				
MFG			UNLESS OTHERWISE NOTED				
TOOL			LINEAR	ANGULAR	REF. NO.	SCALE	
FDRY			±	±	STK. NO.	NONE	

MATL:		
	DESCR. 2" COPPER METER SETTER 15" RISER HEIGHT LOW LEAD BRASS	NUMBER 605B2423--2P01N

605B2423--2P01N