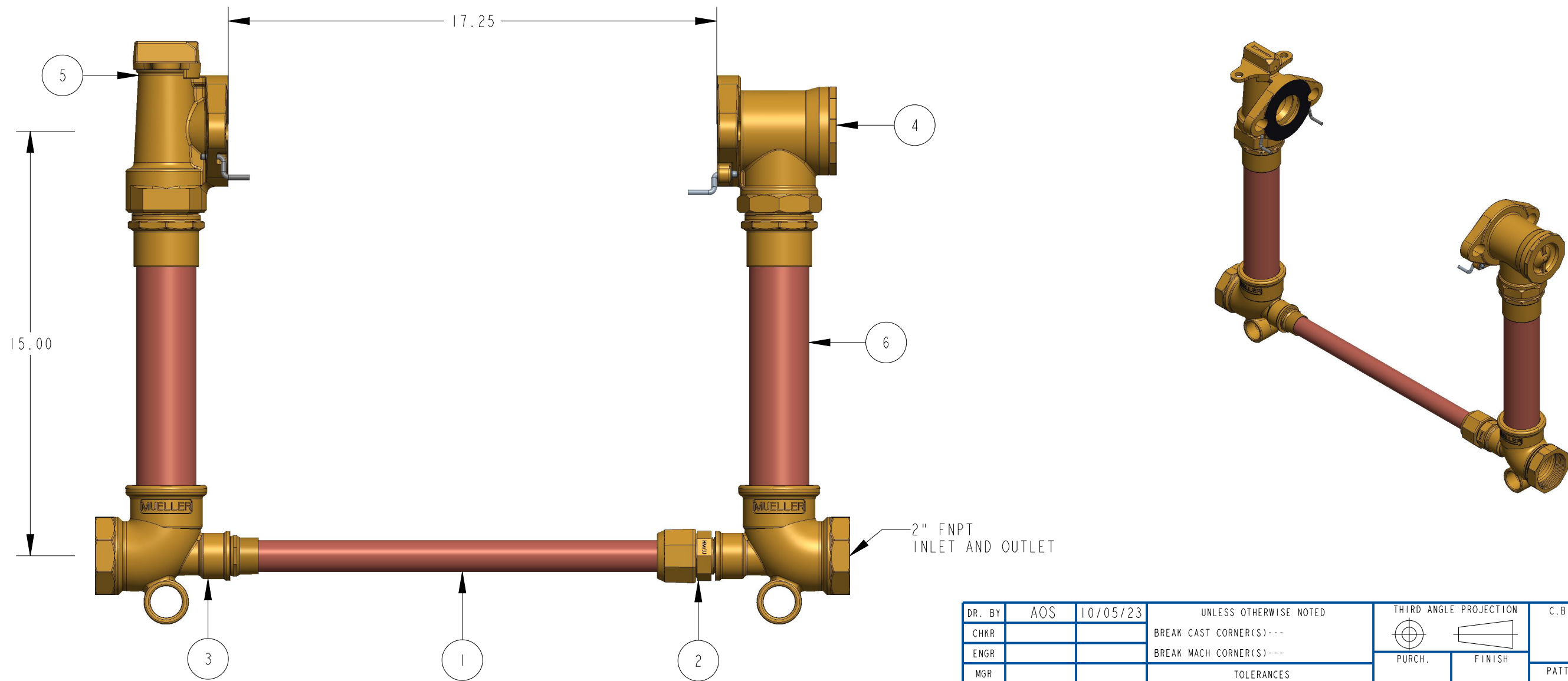


ITEM NO	PART NUMBER	QTY	DESCRIPTION	MATERIAL
1	681558	1	TIE BAR SUB ASSEMBLY	HARD COPPER TUBING UNS C12200 H80 TEMPER
2	330H15428N	1	1" MIP X 1" CTS COMPRESSION TAILPIECE	LEAD FREE BRASS ALLOY ASTM B584 C89833/C87850
3	546234E	2	2" PLUGGED TEE (FNPT X SOLDER X 1"FNPT)	LEAD FREE BRASS ALLOY ASTM B584 C89833/C87850
4	550H14244N	1	2" DUAL CHECK VALVE	LEAD FREE BRASS ALLOY ASTM B584 C89833/C87850
5	550H142860IN	1	2" ANGLE METER STOP	LEAD FREE BRASS ALLOY ASTM B584 C89833/C87850
6	680379E	2	RISER SUB ASSEMBLY	COPPER TUBING UNS C12200 H80 TEMPER



605H1422--2--N

DR. BY	AOS	10/05/23	UNLESS OTHERWISE NOTED	THIRD ANGLE PROJECTION	C.B. NO.
CHKR			BREAK CAST CORNER(S)---		
ENGR			BREAK MACH CORNER(S)---	PURCH.	PATT. NO.
MGR			TOLERANCES	FINISH	
MFG			UNLESS OTHERWISE NOTED	REF. NO.	SCALE
TOOL			LINEAR	±	ANGULAR
FDRY			±	±	STK. NO.
MAT'L:					
MUELLER			DESCR. 2" COPPER METER SETTER 15" RISER HEIGHT LEAD FREE BRASS	NUMBER 605H1422--2--N	