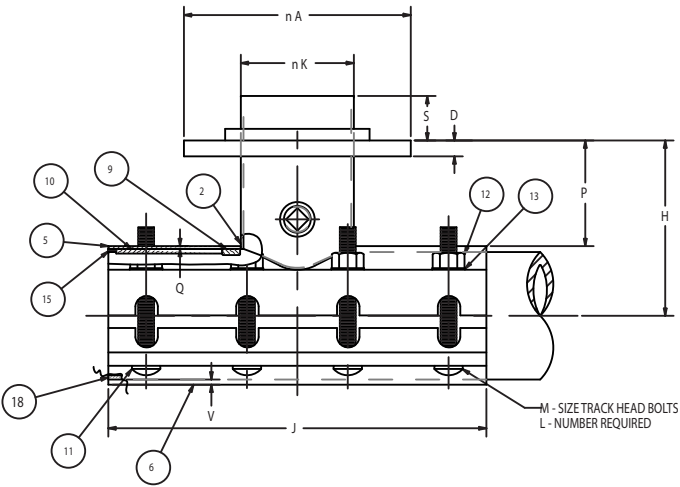


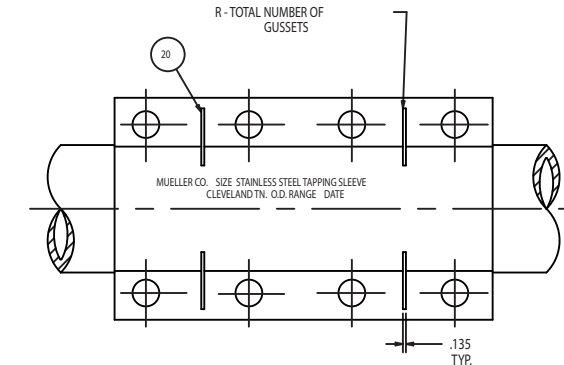
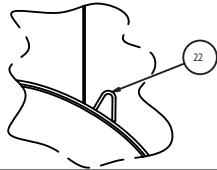
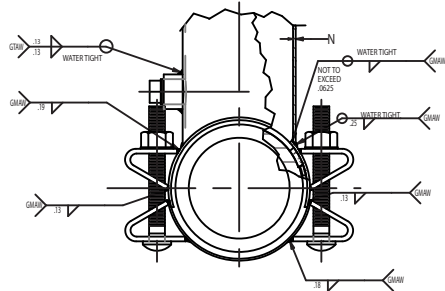
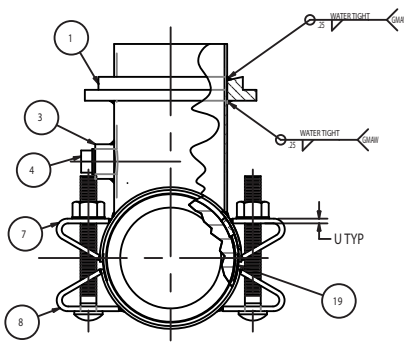
MJ FLANGE DIMENSIONS					
SIZE	A	D	F	S	T
4	9.06	.562	4-.88	2.75	7.50
6	11.06	.625	6-.88	2.75	9.50
8	13.31	.625	6-.88	2.75	11.75
10	15.62	.750	8-.88	2.75	14.00
12	17.88	.750	8-.88	2.75	16.25

F - NUMBER & SIZE OF BOLT HOLES

- NOTES:
 1. SHIELD PLATES ARE INTEGRAL WITH OUTLET BAND FOR 4X4 THROUGH 12X12.
 2. SHIELD PLATES ARE MOLDED WITH GASKETS ON 14X14 THROUGH 24X12.
 3. INSTALLATION INSTRUCTIONS - SEE FORM 11980 LATEST REVISION
 4. PASSIVATION PROCEDURE - SEE MUELLER CO. PROCEDURE NO. 107.8870.06.
 5. FORM# F9997 FOR SPECIAL INSTALLATION TAG ATTACHED WITH STAINLESS STEEL WIRE



M - SIZE TRACK HEAD BOLTS
 L - NUMBER REQUIRED



PARTS LIST							
ITEM	DESCRIPTION	REQD	MATERIAL	ASTM		SIZES	
1	MJ - FLANGE	1	STAINLESS STEEL	A311 OR A182		304L	ALL
2	NECK	1	STAINLESS STEEL	A240		304L	ALL
3	COUPLING	1	STAINLESS STEEL	A240		304L	ALL
4	PLUG	1	STAINLESS STEEL	A240		304L	ALL
5	OUTLET BAND	1	STAINLESS STEEL	A240		304L	ALL
6	CAP BAND	1	STAINLESS STEEL	A240		304L	ALL
7	OUTLET BOLT BARS	2	STAINLESS STEEL	A240		304L	ALL
8	CAP BOLT BARS	2	STAINLESS STEEL	A240		304L	ALL
9	DONUT GASKET	1	RUBBER NITRILE	D2000		DUROMETER 60	ALL
10	OUTLET GASKET	1	RUBBER NITRILE	D2000		DUROMETER 60	ALL
11	TRACK HEAD BOLTS	L	STAINLESS STEEL	F593 A193		ALLOY GR. 1 - COND. A GRADE B8 - CLASS 1	ALL
12	NUTS (HEAVY HEX)	L	STAINLESS STEEL	F594 A194		ALLOY GR. 1 - COND. A GRADE B8 - CLASS 2B	ALL
13	WASHERS	L	STAINLESS STEEL	A240		304	ALL
15	RETAINING RING 10' & ABOVE	2	STAINLESS STEEL	A240		304L	ALL
18	CAP GASKET	1	RUBBER NITRILE	D2000		DUROMETER 60	8X4 - 24X12
19	GAP BRIDGE	2	STAINLESS STEEL	A240		304L	14X4 - 24X12
20	GUSSETS	R	STAINLESS STEEL	A240		304L	10X4 - 24X12
22	SUPPORT BAR	2	STAINLESS STEEL	A240		304L	20X12 & 24X12

SLEEVE DIMENSIONS													
SIZE	PIPE RANGE	H	J	K	L	M	N	P	Q	R	U	V	
													MAIN
4	4	4.50 - 4.90	7.50	15	4.82	8	.625 - 11 X 6.00 LONG	.105	4.75	.105	0	.188	.075
6	4	7.50	15	4.82	8	.625 - 11 X 6.00 LONG	.105	3.70	.105	0	.188	.075	
6	6	6.59 - 7.80	8.00	15	6.92	8	.625 - 11 X 6.00 LONG	.105	4.34	.105	0	.188	.075
8	4	8.50	15	4.82	8	.625 - 11 X 6.00 LONG	.105	4.04	.105	0	.188	.075	
8	6	7.90 - 8.30	9.00	15	6.92	8	.625 - 11 X 6.00 LONG	.105	4.54	.105	0	.188	.075
8	8	8.50	15	4.82	8	.625 - 11 X 6.00 LONG	.105	4.04	.105	0	.188	.075	
8	6	8.62 - 10.00	9.00	15	6.92	8	.625 - 11 X 6.00 LONG	.105	4.54	.105	0	.188	.075
8	8	9.50	18	9.07	12	.625 - 11 X 6.00 LONG	.105	4.67	.105	0	.188	.075	
10	4	10.00	15	4.82	8	.625 - 11 X 6.00 LONG	.105	4.12	.105	8	.188	.075	
10	6	9.90 - 10.30	10.50	15	6.92	8	.625 - 11 X 6.00 LONG	.105	4.62	.105	8	.188	.075
10	8	11.00	18	9.07	12	.625 - 11 X 6.00 LONG	.105	5.12	.105	8	.188	.075	
10	4	10.00	15	4.82	8	.625 - 11 X 6.00 LONG	.105	3.40	.105	8	.188	.075	
10	6	10.73 - 12.40	10.50	15	6.92	8	.625 - 11 X 6.00 LONG	.105	4.62	.105	8	.188	.075
10	8	11.00	18	9.07	12	.625 - 11 X 6.00 LONG	.105	5.12	.105	8	.188	.075	
10	10	11.50	24	11.12	16	.625 - 11 X 6.00 LONG	.105	5.62	.105	14	.188	.075	
12	4	12.00	15	4.82	8	.625 - 11 X 6.00 LONG	.105	4.91	.105	8	.188	.075	
12	6	12.00	15	6.92	8	.625 - 11 X 6.00 LONG	.105	4.91	.105	8	.188	.075	
12	8	12.50 - 14.58	12.00	18	9.07	12	.625 - 11 X 6.00 LONG	.105	4.91	.105	8	.188	.075
12	10	12.00	24	11.12	16	.625 - 11 X 6.00 LONG	.105	4.91	.105	20	.188	.075	
12	12	12.00	30	13.22	16	.625 - 11 X 6.00 LONG	.105	4.91	.105	18	.188	.075	
14	4	13.63	15	4.82	8	.625 - 11 X 6.00 LONG	.105	5.42	.188	8	.188	.105	
14	6	13.63	15	6.92	8	.625 - 11 X 6.00 LONG	.105	5.42	.188	8	.188	.105	
14	8	15.25 - 16.88	13.63	18	9.07	12	.625 - 11 X 6.00 LONG	.105	5.42	.188	8	.188	.105
14	10	13.63	24	11.12	16	.625 - 11 X 6.00 LONG	.105	5.42	.188	16	.188	.105	
14	12	13.63	30	13.22	16	.625 - 11 X 6.00 LONG	.105	5.42	.188	20	.188	.105	
16	4	14.69	15	4.82	8	.625 - 11 X 6.00 LONG	.105	5.40	.188	8	.188	.105	
16	6	14.69	15	6.92	8	.625 - 11 X 6.00 LONG	.105	5.40	.188	8	.188	.105	
16	8	17.40 - 19.00	14.68	18	9.07	12	.625 - 11 X 6.00 LONG	.105	5.40	.188	8	.188	.105
16	10	14.68	24	11.12	16	.625 - 11 X 6.00 LONG	.105	5.40	.188	16	.188	.105	
16	12	14.68	30	13.22	16	.625 - 11 X 6.00 LONG	.105	5.40	.188	16	.188	.105	
18	4	16.00	15	4.82	8	.625 - 11 X 6.00 LONG	.105	5.56	.188	8	.188	.105	
18	6	16.00	15	6.92	8	.625 - 11 X 6.00 LONG	.105	5.56	.188	8	.188	.105	
18	8	19.30 - 20.10	16.00	18	9.07	12	.625 - 11 X 6.00 LONG	.105	5.56	.188	8	.188	.105
18	10	16.00	24	11.12	16	.625 - 11 X 6.00 LONG	.105	5.56	.188	16	.188	.105	
18	12	16.00	30	13.22	16	.625 - 11 X 6.00 LONG	.105	5.56	.188	16	.188	.105	
20	4	16.88	15	4.82	8	.625 - 11 X 6.00 LONG	.105	5.14	.188	8	.188	.105	
20	6	16.88	15	6.92	8	.625 - 11 X 6.00 LONG	.105	5.14	.188	8	.188	.105	
20	8	21.40 - 22.70	16.88	18	9.07	12	.625 - 11 X 6.00 LONG	.105	5.14	.188	12	.188	.105
20	10	16.88	24	11.12	16	.625 - 11 X 6.00 LONG	.105	5.14	.188	16	.188	.105	
20	12	16.88	30	13.22	16	.625 - 11 X 6.00 LONG	.105	5.14	.188	16	.188	.105	
24	4	19.00	24	4.82	16	.625 - 11 X 6.00 LONG	.105	5.61	.188	16	.188	.105	
24	6	19.00	24	6.92	16	.625 - 11 X 6.00 LONG	.105	5.61	.188	16	.188	.105	
24	8	23.30 - 26.00	19.00	24	9.07	16	.625 - 11 X 6.00 LONG	.105	5.61	.188	16	.188	.105
24	10	19.00	24	11.12	16	.625 - 11 X 6.00 LONG	.105	5.61	.188	16	.188	.105	
24	12	19.00	30	13.22	20	.625 - 11 X 6.00 LONG	.105	5.61	.188	16	.188	.105	

FORM	CAP. 03.008	UNLESS OTHERWISE NOTED	CS. NO.
TYPE	ASSEMBLY	BREAK OUT CHANGES	
REVISION	ASSEMBLY	BREAK INCH CHANGES	
DATE		TOLERANCES	
BY		UNLESS OTHERWISE NOTED	
CHKD		LINEAR	ANGULAR
DATE			

NOTED

FABRICATED STAINLESS STEEL TAPPING SLEEVES
 4X4 THRU 24X12 SIZES H304 MJ STYLE

Mueller

NO ASSY

6799