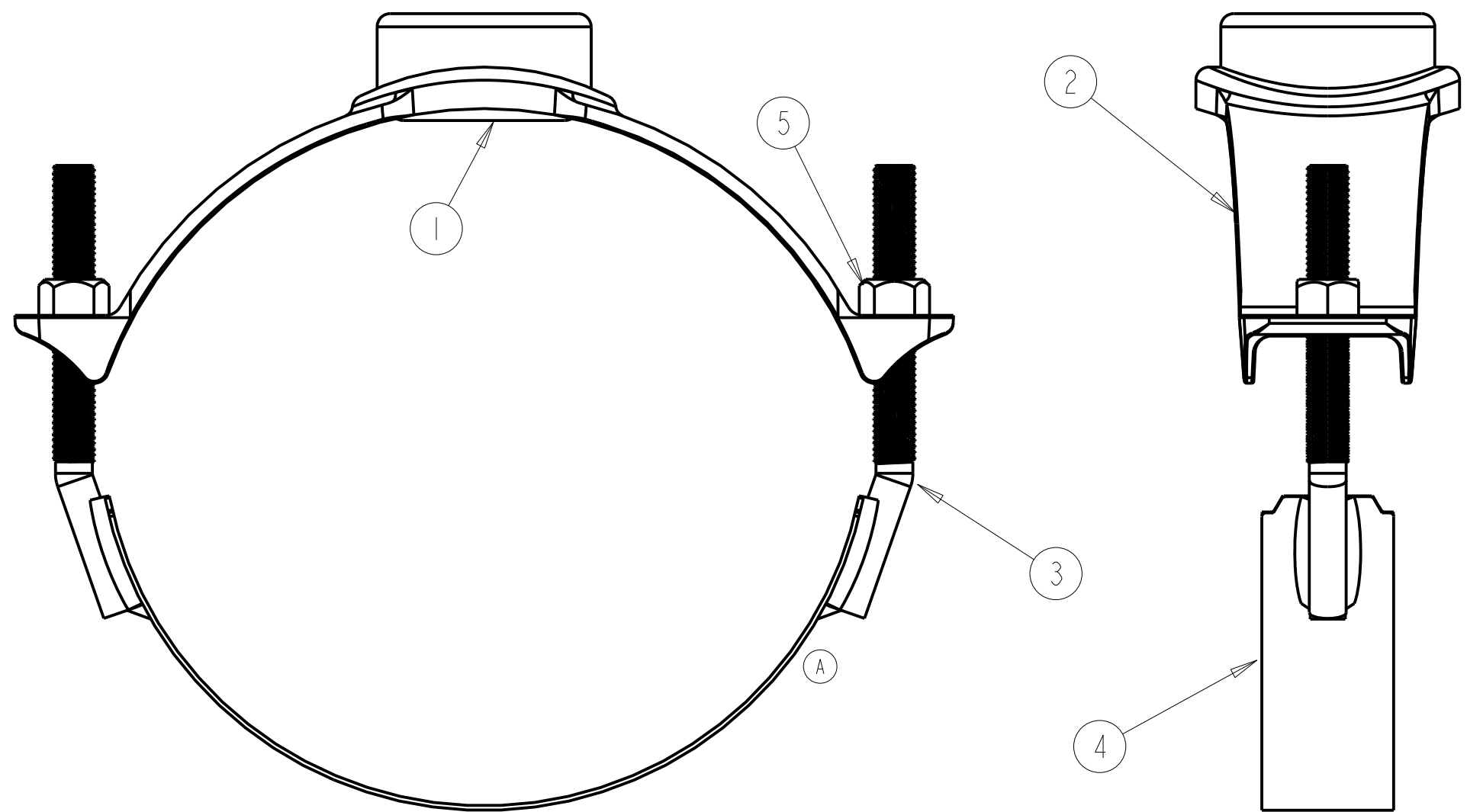
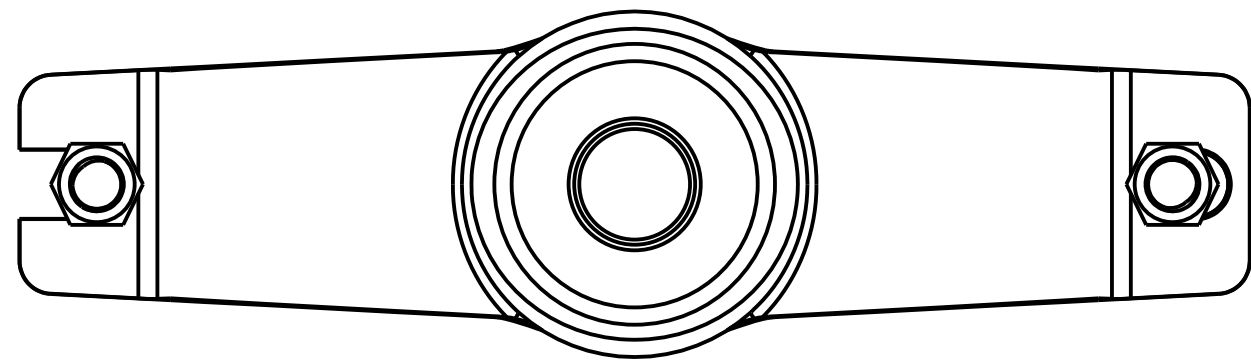


PIPE O.D. RANGE		KIND AND SIZE OF PIPE		SINGLE BRONZE STRAPS WITH AWWA TAPER THREAD (C.C.)				SINGLE STAINLESS STEEL STRAPS WITH AWWA TAPER THREAD (C.C.)					
INCH	MM	A-C	CAST IRON, DUCTILE IRON, PVC C900	BASE CATALOG NUMBER	B SIZE OF TAPPING (ADD TO "BASE" TO COMPLETE CATALOG NUMBER)				BASE CATALOG NUMBER	B SIZE OF TAPPING (ADD TO "BASE" TO COMPLETE CATALOG NUMBER)			
					1/2"	5/8"	3/4"	1"		1/2"	5/8"	3/4"	1"
4.74-5.32	121.0-135.0	**	4"	BR I B 0474 CC	050	062	075	100	BR I S 0474 CC	050	062	075	100
6.84-7.45	174.0-189.0		6"	BR I B 0684 CC	050	062	075	100	BR I S 0684 CC	050	062	075	100
8.99-9.67	229.0-245.0		8"	BR I B 0899 CC	050	062	075	100	BR I S 0899 CC	050	062	075	100
11.04-12.12	281.0-307.0		10"	BR I B 1104 CC	050	062	075	100	BR I S 1104 CC	050	062	075	100
13.14-14.58	334.0-370.0		12"	BR I B 1314 CC	050	062	075	100	BR I S 1314 CC	050	062	075	100

PIPE O.D. RANGE		KIND AND SIZE OF PIPE		SINGLE BRONZE STRAPS WITH AWWA I.P. THREAD (F.I.P.T.)				SINGLE STAINLESS STEEL STRAPS W/ AWWA I.P. THREAD (F.I.P.T.)					
INCH	MM	A-C	CAST IRON, DUCTILE IRON, PVC C900	BASE CATALOG NUMBER	B SIZE OF TAPPING (ADD TO "BASE" TO COMPLETE CATALOG NUMBER)				BASE CATALOG NUMBER	B SIZE OF TAPPING (ADD TO "BASE" TO COMPLETE CATALOG NUMBER)			
					1/2"	5/8"	3/4"	1"		1/2"	5/8"	3/4"	1"
4.74-5.32	121.0-135.0	**	4"	BR I B 0474 IP	050	062	075	100	BR I S 0474 IP	050	062	075	100
6.84-7.45	174.0-189.0		6"	BR I B 0684 IP	050	062	075	100	BR I S 0684 IP	050	062	075	100
8.99-9.67	229.0-245.0		8"	BR I B 0899 IP	050	062	075	100	BR I S 0899 IP	050	062	075	100
11.04-12.12	281.0-307.0		10"	BR I B 1104 IP	050	062	075	100	BR I S 1104 IP	050	062	075	100
13.14-14.58	334.0-370.0		12"	BR I B 1314 IP	050	062	075	100	BR I S 1314 IP	050	062	075	100



PARTS LIST					
ITEM	DESCRIPTION	BRIS MATERIAL	BRIB MATERIAL	ASTM	TYPE
1	O - RING	RUBBER	RUBBER	D2000	***
2	SADDLE	BRONZE	BRONZE	B62	C83600
3	STUD	STAINLESS STEEL	SILICON BRONZE		304
4	STRAP	STAINLESS STEEL	SILICON BRONZE		
5	NUT	STAINLESS STEEL	SILICON BRONZE	A194	304

\*\*\* MUELLER RUBBER CODE R91

- \*\* THE OUTSIDE DIAMETER OF A-C PIPE VARIES FROM MANUFACTURER TO MANUFACTURER. TO MAKE CERTAIN YOU SELECT THE PROPER CLAMP:
- 1) DETERMINE THE O.D. OF THE PIPE AT THE POINT OF SADDLE INSTALLATION;
  - 2) FROM THE PIPE O.D. RANGE COLUMN OF THE ABOVE CHART, CHOOSE A SADDLE THAT HAS A PIPE O.D. RANGE THAT INCLUDES THE DETERMINED PIPE DIAMETER.

##### X HOOHU#R Q IIG HQ WIDO  
#  
WUOH#R #DQ G #R Z Q HUVK IS#R I#WK I#HQ J IQ HHUIQ J #S DWD  
UHP DIQ V#Q #P X HOOHU#R IQ R #K V#H#V#R #EH#P DG H  
R I#WK I#HS DWD#I [ P#SW#D#V#SHP I#IP D#O\#D X WK R UI] HG  
E\#P X HOOHU#R #D#V#Q W#R Q #WK H#S#D#W#R I#H#F I#S#Q W#V  
W#R #WK H#V#R R Q G I#W#R Q V#H#V#H#V#X P HG 1

ECO 1484051  
A  
ECO 170009  
CHANGED DRAWING TO SHOW THE NEW SS STRAP DESIGN  
AND REMOVED WASHER FROM BOM  
TBE 2/24/2016

B  
ECO 1700160  
ADDED TAPPING SIZES  
TBE 9/7/2018

DR. BY	MCB	09/12/08	UNLESS OTHERWISE NOTED	THIRD ANGLE PROJECTION	C.B. NO.
CHKR	CGH	09/12/08	BREAK CAST CORNER(S)---		
ENGR	JWB	09/12/08	BREAK MACH CORNER(S)---	PURCH.	PATT. NO.
MGR			TOLERANCES	FINISH	
MFG			UNLESS OTHERWISE NOTED	REF. NO.	SCALE
TOOL			LINEAR		NONE
FDRY			±		STR. NO.
MAT'L:		DESCR.		NUMBER	
MUELLER HYMAX		BRIS & BRIB SERIES BRONZE SERVICE SADDLES - SINGLE STRAP		6813	