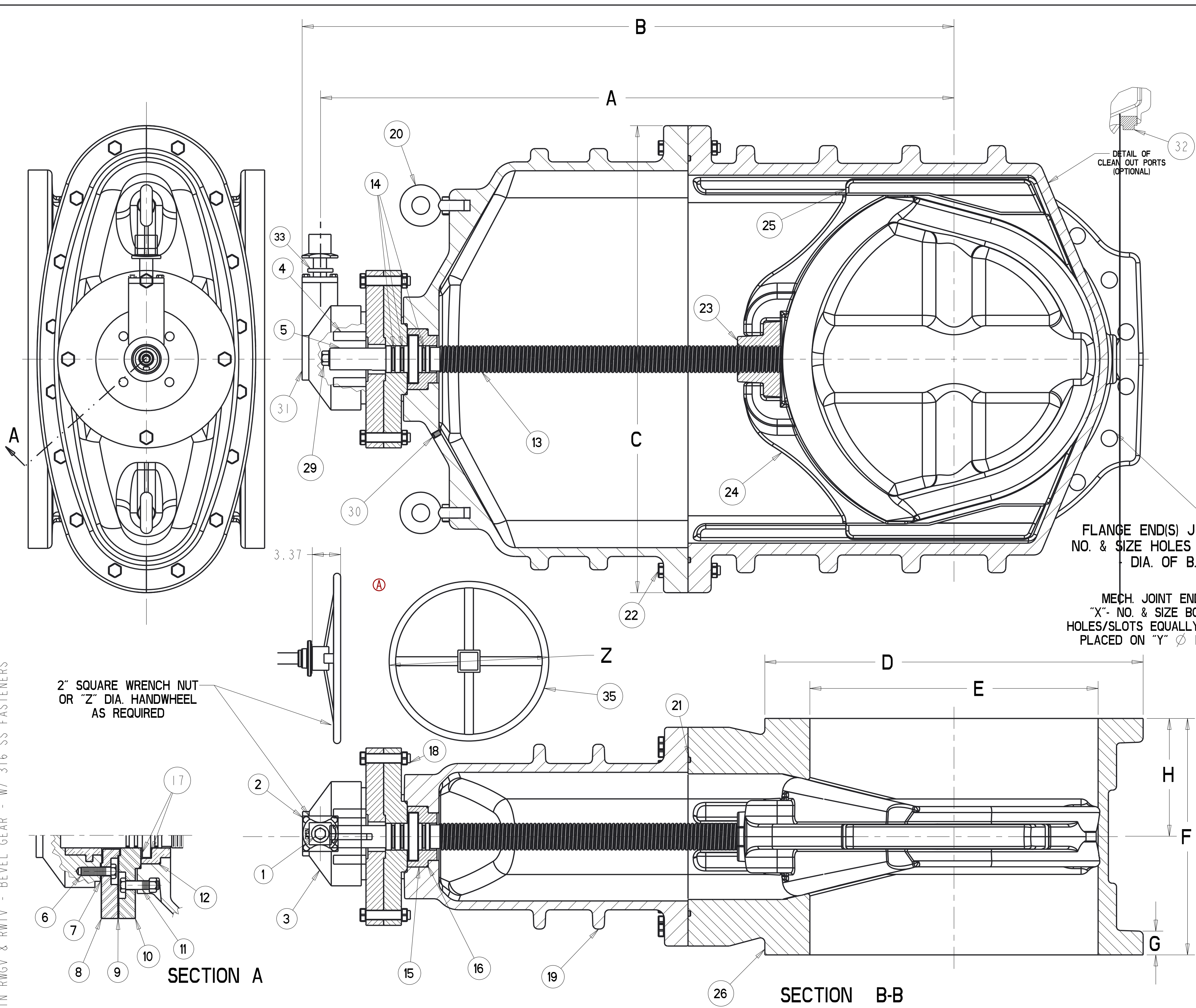
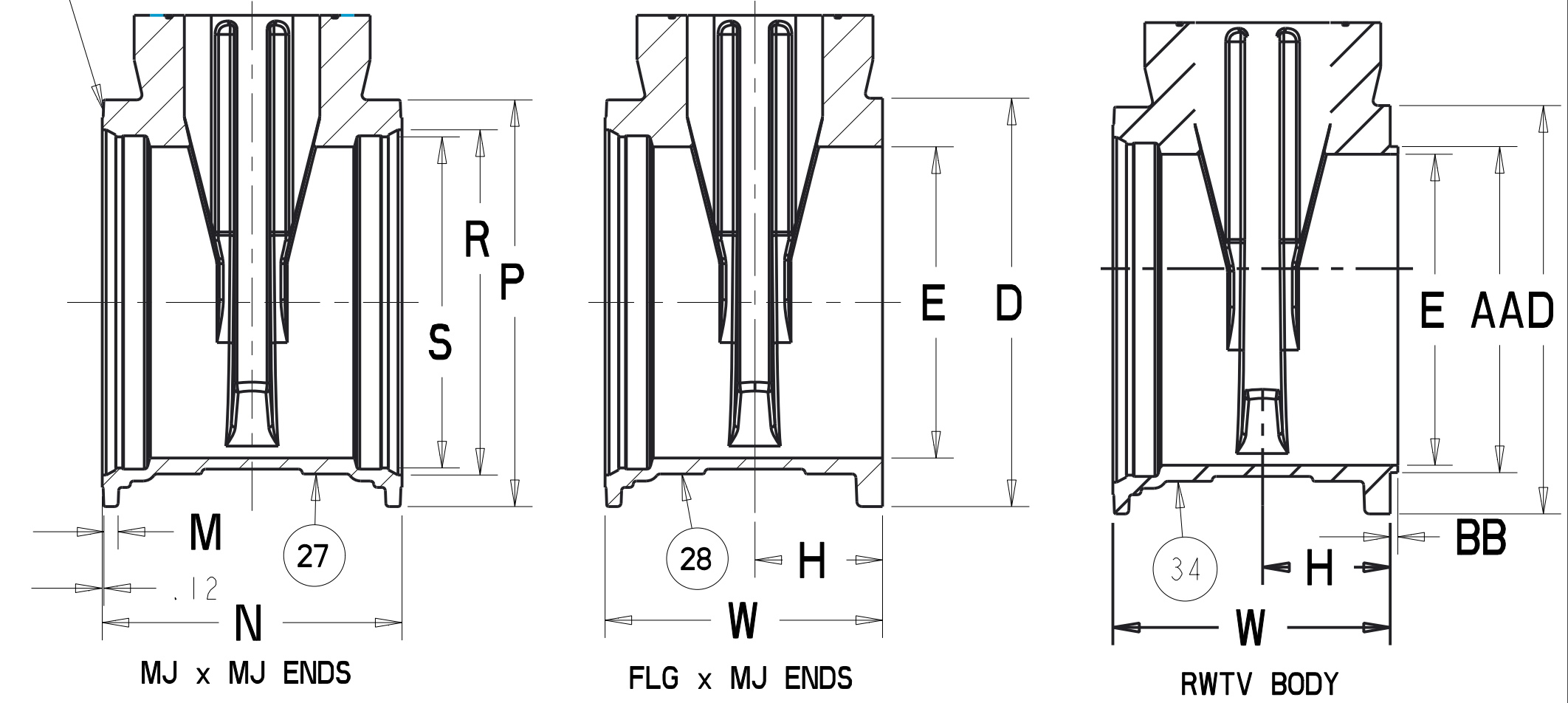


16 IN - 36 IN RWGV & RWTV - BEVEL GEAR - W/ 316 SS FASTENERS



PARTS LIST				
ITEM	DESCRIPTION	REQ'D	MATERIAL	ASTM
1	CAP SCREW	1	316 STAINLESS STEEL	SEE NOTE 2
2	WRENCH NUT	1	CAST IRON [SEE NOTE 5]	A126
3	BEVEL GEAR UNIT	1		SEE NOTE 3
4	STEM NUT	1	BRASS	
5	KEY	1	STEEL	
6	SOCKET HEAD SCREW	4	316 STAINLESS STEEL	SEE NOTE 2
7	GASKET	1	RUBBER	D2000
8	ADAPTER	1	STEEL	A36
9	GASKET	1	RUBBER	D2000
10	STUFFING BOX	1	STEEL	A36
11	SOCKET HEAD BOLT & NUT	4	316 STAINLESS STEEL	SEE NOTE 2
12	O-RING	1	RUBBER	D2000
13	STEM	1	BRONZE	SEE NOTE 4
14	O-RING	3	RUBBER	D2000
15	BONNET BUSHING	1	BRONZE	B62
16	O-RING	1	RUBBER	D2000
17	WASHER	2	BRASS	
18	HEX BOLT & NUT	4	316 STAINLESS STEEL	SEE NOTE 2
19	BONNET	1	DUCTILE IRON	A536
20	EYEBOLT	2	STEEL	GALVANIZED
21	O-RING	1	RUBBER	D2000
22	HEX BOLT & NUT	"L"	316 STAINLESS STEEL	SEE NOTE 2
23	DISC NUT	1	BRONZE	B62
24	DISC	1		SEE NOTE 1
25	GUIDE CAP	2	CELCON	M90
26	BODY - FLG ENDS	1	DUCTILE IRON	A536
27	BODY - MJ ENDS	1	DUCTILE IRON	A536
28	BODY FLG X MJ ENDS	1	DUCTILE IRON	A536
29	HOLD-DOWN WASHER & BOLT	1	316 STAINLESS STEEL	SEE NOTE 2
30	PIPE PLUG	1	304 STAINLESS STEEL	A193
31	ACTUATOR CAP PLUG	1	CAST IRON [SEE NOTE 5]	
32	PIPE PLUG	2	SUPPLIED WHEN TAPPED	
33	IDENTIFICATION WASHER	1	RED RUBBER	
34	BODY - TAPPED FLG X MJ	1	DUCTILE IRON	A536
35	HAND WHEEL	1	STEEL	



NOTE:  
 1) RUBBER ENCAPSULATED DUCTILE IRON DISC  
 RUBBER - EPDM ASTM D2000  
 DUCTILE IRON ASTM A536 GRADE 65-45-12  
 2) BOLTS - ASTM F593 GROUP 2-CW  
 NUTS - ASTM F594 GROUP 2-CW  
 3) VALVES WILL BE FURNISHED WITH ONE OF THE LISTED OPERATORS AT THE MANUFACTURER'S DISCRETION.  
 16" - 24" MASTERGEAR OR ROTORK  
 30" & 36" LIMITORQUE OR ROTORK.  
 4) 16" VALVE - BRONZE ALLOY ASTM B138 C67600  
 18" TO 30" VALVES - BRONZE ASTM B584 C86400 OR C86500  
 36" VALVES - BRONZE ASTM B584 C86700 OR C86200  
 5) MANUFACTURER'S OPTION TO UPGRADE MATERIAL TO DUCTILE IRON A536 GRADE 65-45-12

VALVE SIZE	A	B	C	D	E	F	G	H	J	K	L	M	N	P	R	S	W	X	Y	Z	AA	BB	TURNS TO OPEN MASTERGEAR, RATIO 4.5:1 LIMITORQUE, RATIO 4:1	TURNS TO OPEN ROTORK, RATIO 4:1	WEIGHT		
16	37.03	39.24	26.58	23.50	16.00	16.06	1.59	8.03	16	1.20	21.25	12	1.10	19.75	22.56	18.40	17.28	17.91	12	-.875	21.00	12.00	17.23	0.25	221	196	1,000
18	44.50	46.06	30.50	24.88	18.38	17.00	1.69	8.50	16	1.25	22.75	12	1.06	21.00	24.88	20.74	19.64	19.00	12	-.875	23.25	12.00	19.45	0.25	257	228	1,350
20	47.69	49.25	33.75	27.50	20.38	18.00	1.78	9.00	20	1.25	25.00	12	1.60	21.50	27.25	22.84	21.74	19.75	14	-.875	25.50	18.00	21.45	0.25	284	252	1,800
24	54.06	55.50	39.50	32.00	24.38	20.00	2.00	10.00	20	1.38	29.50	16	1.12	23.50	31.88	27.05	25.94	21.75	16	-.875	30.00	18.00	25.43	0.25	338	300	2,300
30	64.93	66.52	48.00	38.75	30.38	26.00	2.12	13.00	28	1.38	36.00	20	1.25	33.50	39.53	33.47	32.18	29.75	20	1.125	36.88	18.00	30.94	.516	372	372	5,100
36	77.19	78.75	56.50	46.00	36.38	30.00	2.37	15.00	32	1.63	42.75	24	1.45	37.50	46.41	39.77	38.48	33.75	24	1.125	43.75	18.00	36.94	.516	444	444	8,400

ECO 1656298  
 ADDED HAND WHEEL  
 VIEW TO DRAWING  
 JWM 04/02/14

**APPROVED**  
 By Charles Graham Hines at 5:26 pm, Apr 02, 2014

DR BY: HD	1/11/12	UNLESS OTHERWISE NOTED	THIRD ANGLE PROJECTION	C.D. NO.
CHKD: JAB	1/11/12	BREAK CAST CORNERS!		
ENGR: CGH	1/11/12	BREAK MCH CORNERS!		
MFR:		TOLERANCES	NO FINISH ASSY	PART. NO.
WFO:		UNLESS OTHERWISE NOTED	REF. NO.	SCALE
TOOL:		LINEAR	ANGULAR	NONE
FBRY:		±	±	STR. NO.
MAT'L: NOTED		DESCR: 16 IN - 36 IN RWGV & RWTV - BEVEL GEAR W/ 316 SS FASTENERS		NUMBER: 6956