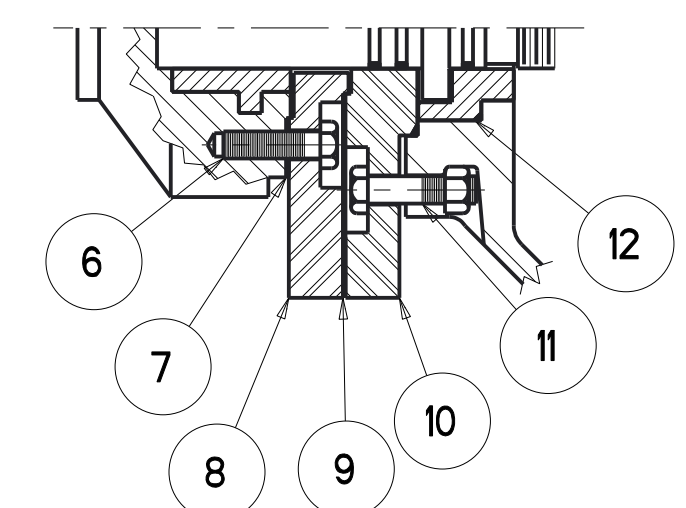
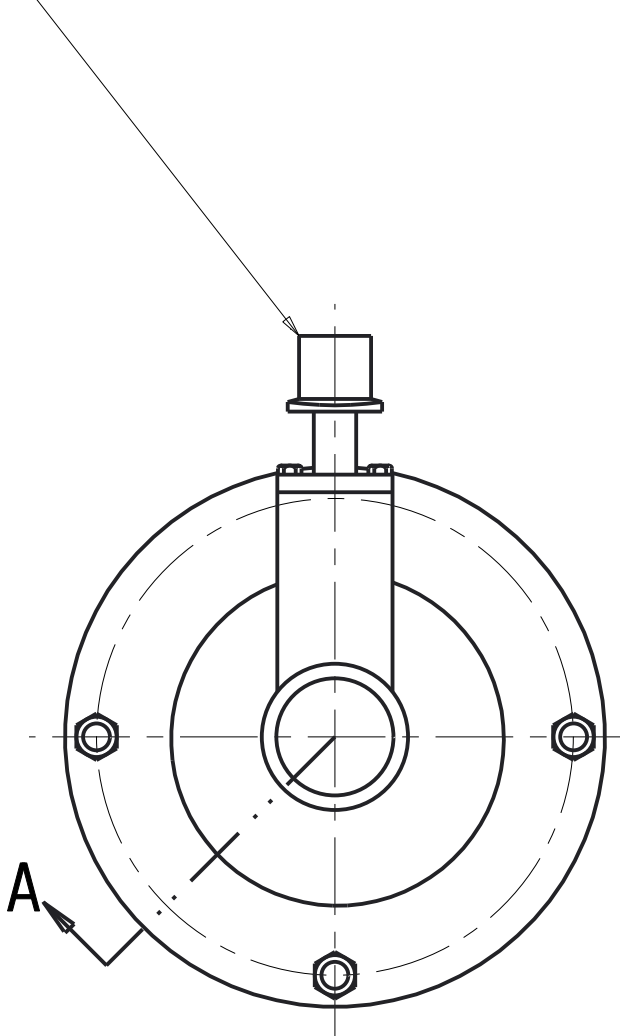


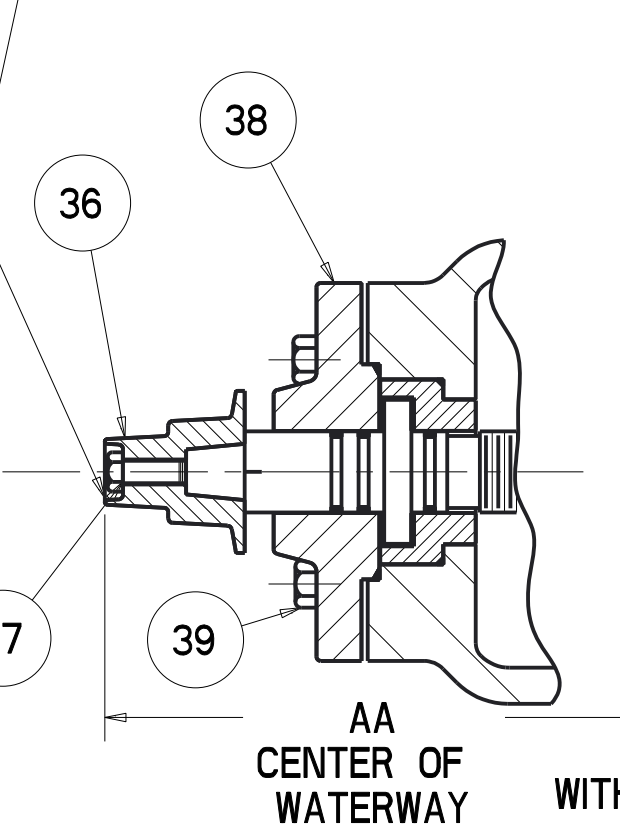
18" - 36" TAPPING VALVES - FLANGE X MECH. JOINT ENDS - 250 W - W/OR WITH SPUR GEARING - 316SS FASTENERS

2" SQUARE WRENCH NUT  
OR "X" DIA. HANDWHEEL  
OPEN LEFT OR RIGHT  
AS REQUIRED

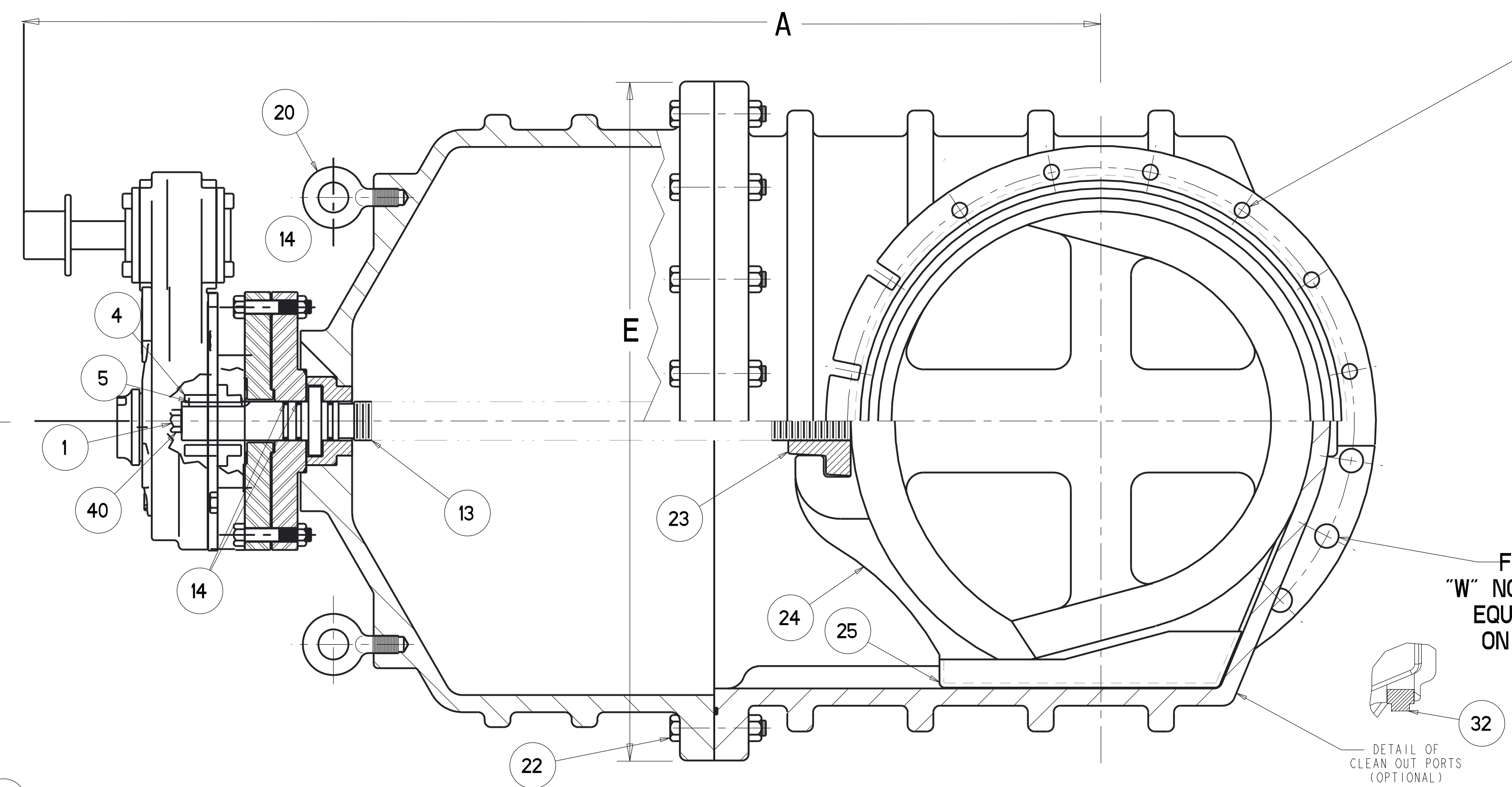


SECTION A

2" SQUARE WRENCH NUT  
OPEN LEFT OR RIGHT  
AS REQUIRED



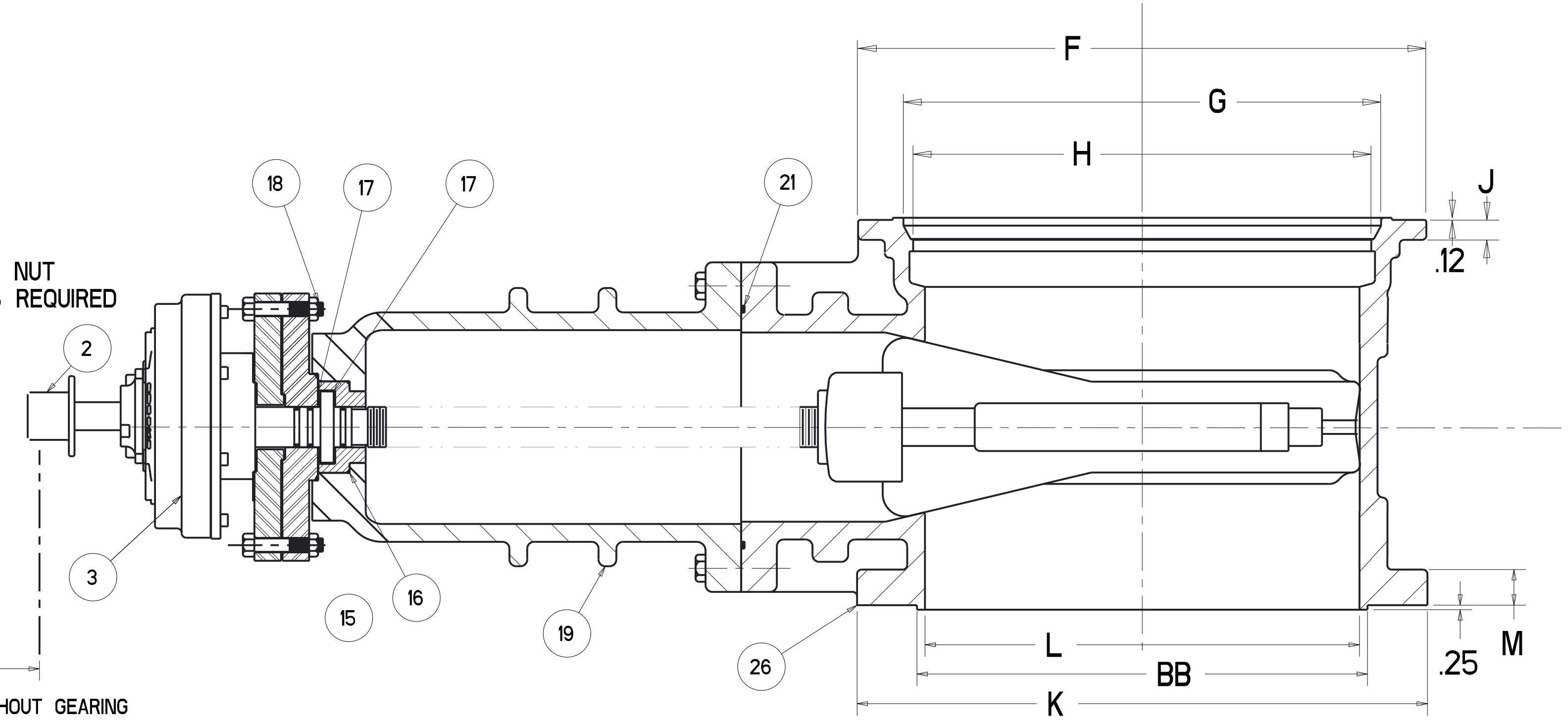
AA CENTER OF WATERWAY  
WITHOUT GEARING



MECH. JOINT END  
4 - .88 SLOTS &  
"U" NO. & SIZE HOLES  
EQUALLY SPACED  
ON "V" DIA. B.C.  
30 & 36 HAVE NO SLOTS

FLANGE END  
"W" NO. & SIZE HOLES  
EQUALLY SPACED  
ON "Y" DIA. B.C.

DETAIL OF  
CLEAN OUT PORTS  
(OPTIONAL)



VALVE SIZE	A	E	F	G	H	J	K	L	M	V	W	X	Y	Z	AA	BB	URNS TO OPEN ROTORK	EST. WEIGHT
18	49.64	30.50	24.88	20.74	19.64	1.06	25.00	18.38	1.69	23.25	16 - 1.25	12	22.75	12	44.19	19.45	228	1,350
20	52.75	33.75	27.25	22.84	21.74	1.60	27.50	20.38	1.78	25.50	20 - 1.25	12	25.00	12	48.25	21.45	252	1,800
24	59.15	39.50	31.88	27.05	25.94	1.12	32.00	24.38	2.00	30.00	20 - 1.38	12	29.50	16	53.88	25.43	300	2,300
30	70.83	48.00	39.53	33.47	32.18	1.25	38.75	30.38	2.12	36.88	28 - 1.38	18	36.00	20	65.38	32.38	372	5,000
36	83.14	56.50	46.41	39.77	38.48	1.45	46.00	36.38	2.37	43.75	32 - 1.63	18	42.75	24	78.43	38.38	444	8,400

PARTS LIST

ITEM	DESCRIPTION	REQD	MATERIAL	ASTM
1	CAP SCREW	1	STEEL	
2	WRENCH NUT (SEE NOTE 3)	1	CAST IRON	A126 CLASS B
3	SPUR GEAR UNIT	1		
4	STEM NUT	1	BRASS	
5	KEY	1	STEEL	
6	SOCKET HEAD SCREW	4	316 STN STEEL	A193 GRADE B8M
7	GASKET	1	RUBBER	D2000
8	ADAPTER	1	DUCTILE IRON	A536
9	GASKET	1	RUBBER	D2000
10	STUFFING BOX	1	DUCTILE IRON	A536
11	SOCKET HEAD BOLT NUT	4	316 STN STEEL	A193 A194 GRADE B8M
12	O-RING	1	RUBBER	D2000
13	STEM	1	BRONZE	SEE NOTE 1
14	O-RING	3	RUBBER	D2000
15	BONNET BUSHING	1	BRONZE	B62
16	O-RING	1	RUBBER	D2000
17	WASHER	2	BRASS	
18	HEX BOLT NUT	4	316 STN STEEL	A193 F504 GRADE B8M GROUP 2
19	BONNET	1	DUCTILE IRON	A536
20	EYEBOLT	2	STEEL	GALVANIZED
21	O-RING	1	RUBBER	D2000
22	HEX BOLT NUT	"Z"	316 STN STEEL	A193 A194 GRADE B8M
23	DISC NUT	1	BRONZE	B62
24	DISC	1	SEE NOTE 2	
25	GUIDE CAP	2	ACETAL	M90
26	BODY - FLG. X M.J.	1	DUCTILE IRON	A536
36	WRENCH NUT (SEE NOTE 3)	1	CAST IRON	A126 CLASS B
37	CAP SCREW	1	316 STN STEEL	A193 GRADE B8M
38	STUFFING BOX	1	DUCTILE IRON	A536
39	STUFFING BOX BOLT NUT (STD HEX)	4	316 STN STEEL	A193 A194 GRADE B8M
40	HOLD-DOWN WASHER NUT	1	316 STN STEEL	A194 GRADE B8M
41	PIPE PLUG	2		

- NOTES:
- 18" - 36" VALVES - MANGANESE BRONZE BRONZE ASTM B584 ALLOY C86400
  - RUBBER ENCAPSULATED DUCTILE IRON DISC RUBBER - EPDM ASTM D2000 DUCTILE IRON ASTM A536
  - MANUFACTURER'S OPTION TO UPGRADE MATERIAL TO DUCTILE IRON - ASTM A536

DR BY: AO	3/18/16	UNLESS OTHERWISE NOTED	THIRD ANGLE PROJECTION	C.D. NO.
CHKD: BB	3/18/16	BREAK CAST CORNERS!	PURCH. FINISH	PART. NO.
ENGR: JM	3/18/16	BREAK MACH CORNERS!		
MFR:		TOLERANCES	REF. NO.	SCALE
MFG:		UNLESS OTHERWISE NOTED		NONE
TOOL:		LINEAR	ANGULAR	STR. NO.
FBY:		±	±	

MAT'L: NOTED  
DESCR: 18" - 36" RWTV'S TAPPING VALVE WITH SPUR GEAR & 316 SS FASTENERS  
NUMBER: 7296

**APPROVED**  
By Jason W. Bradley at 4:25 pm, Mar 18, 2016