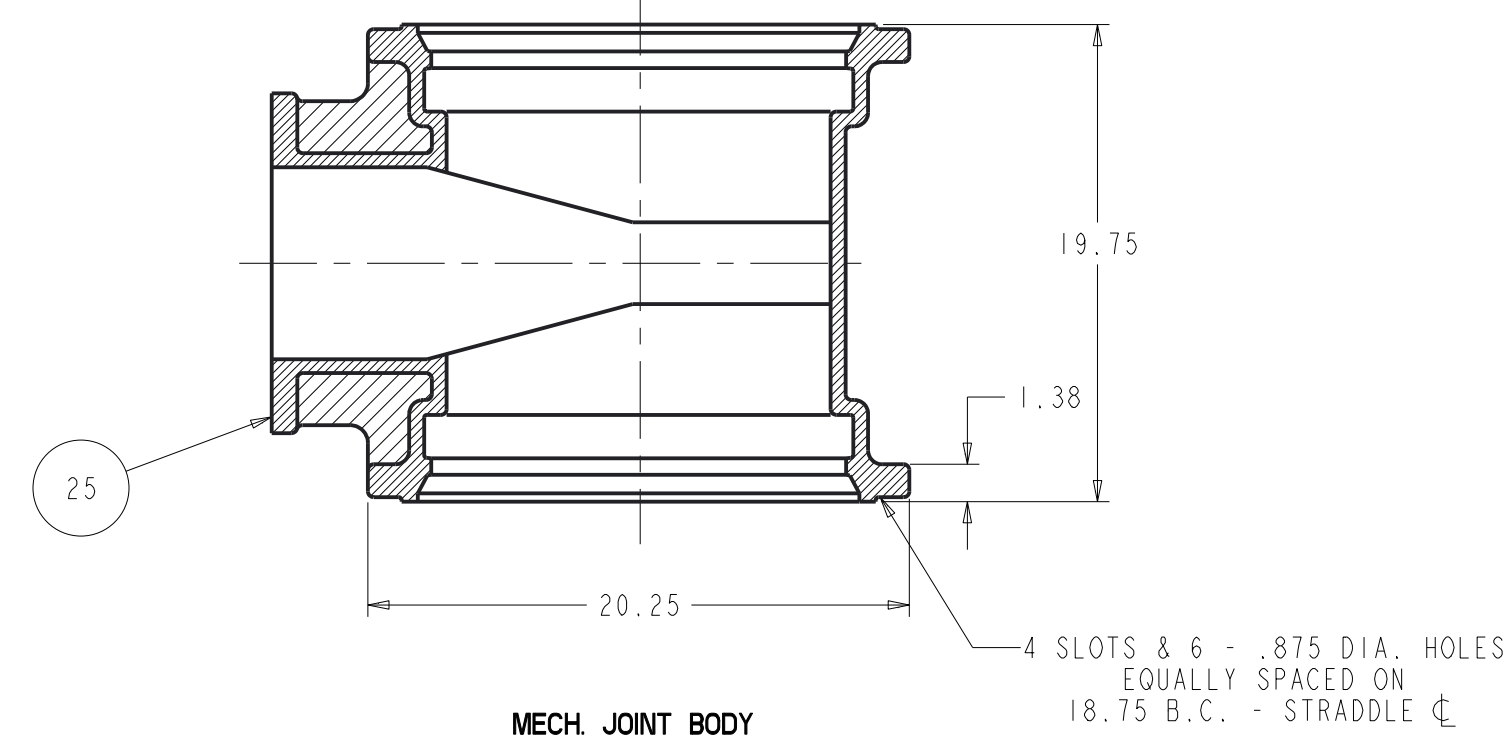
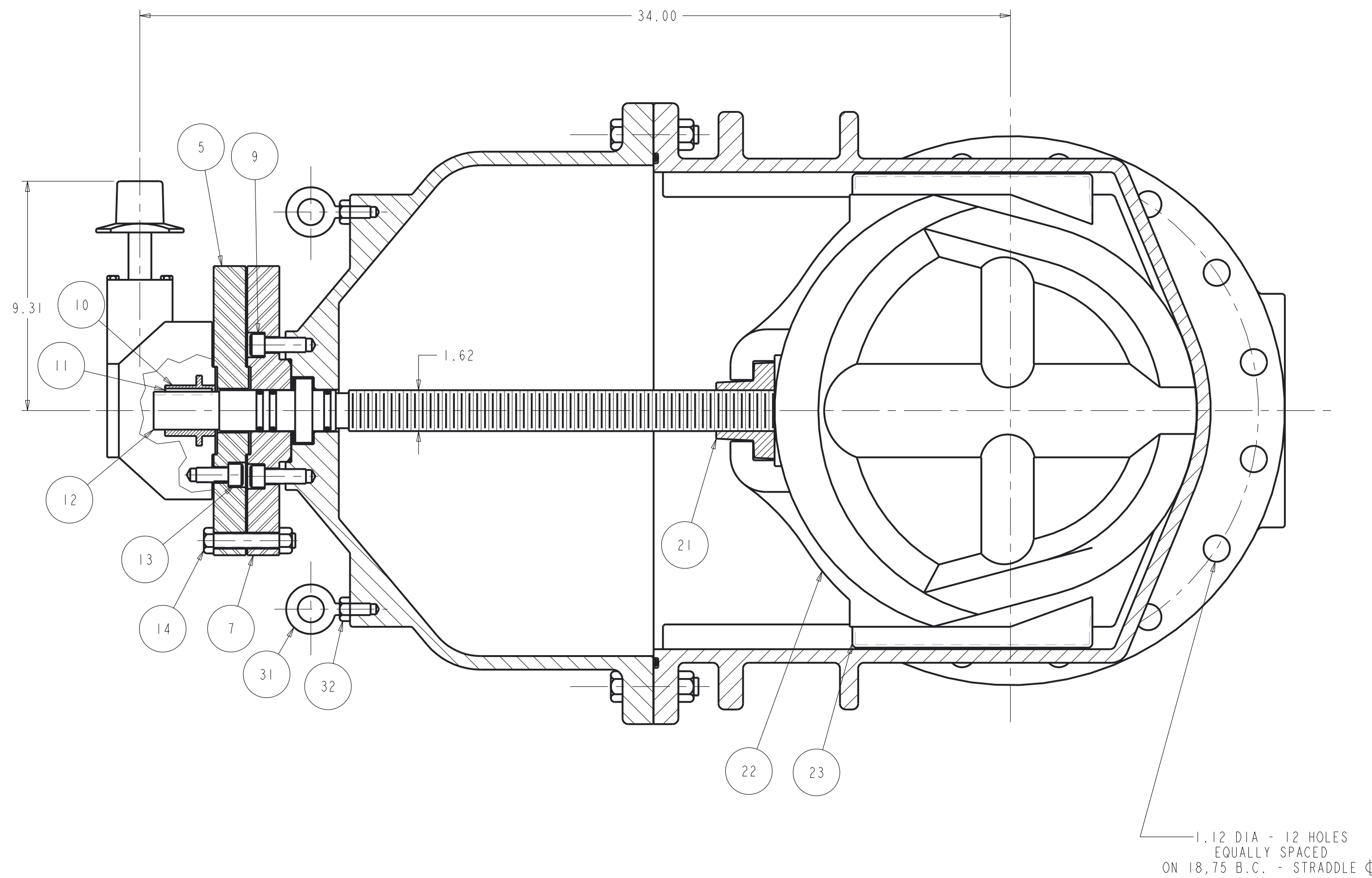
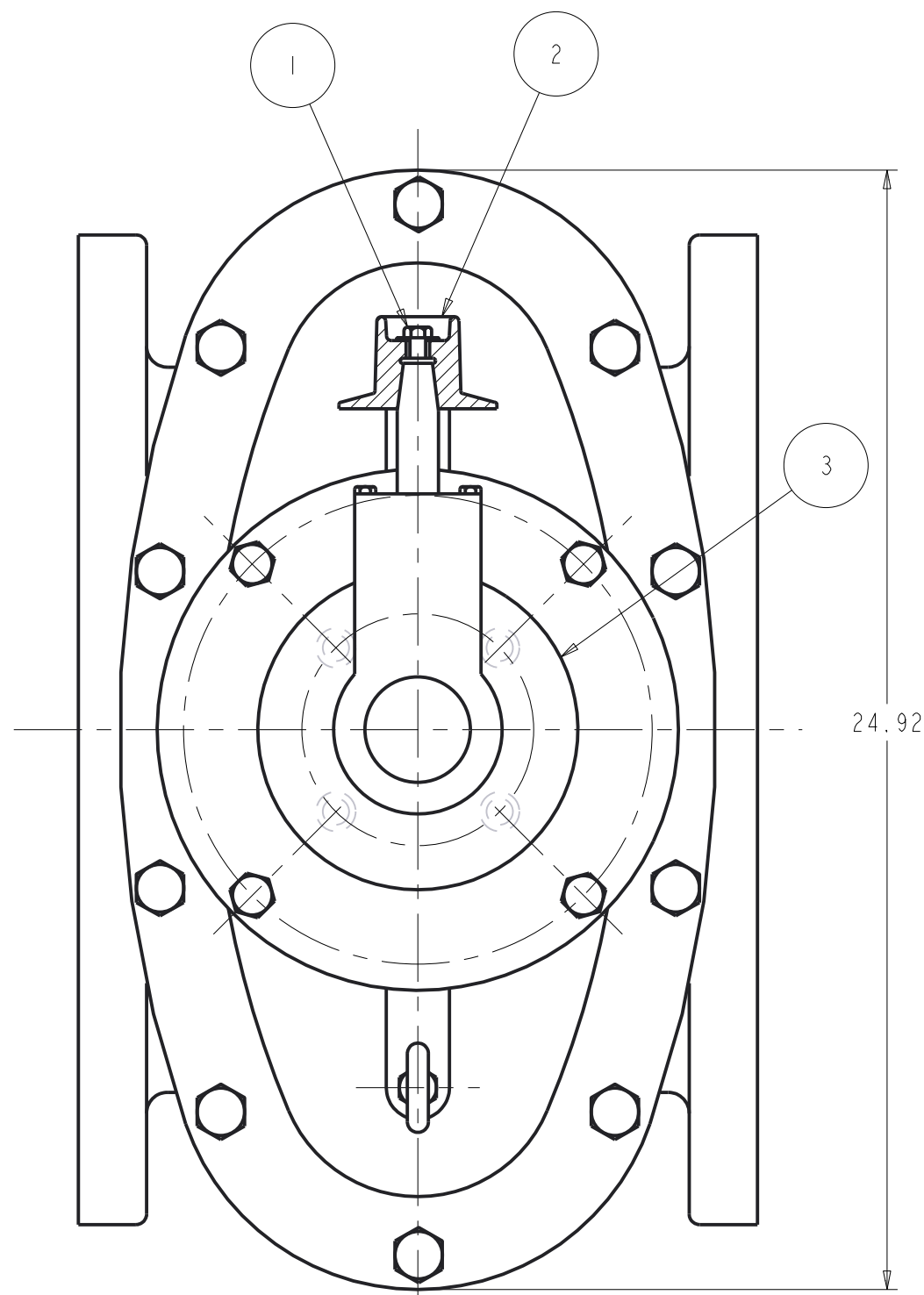
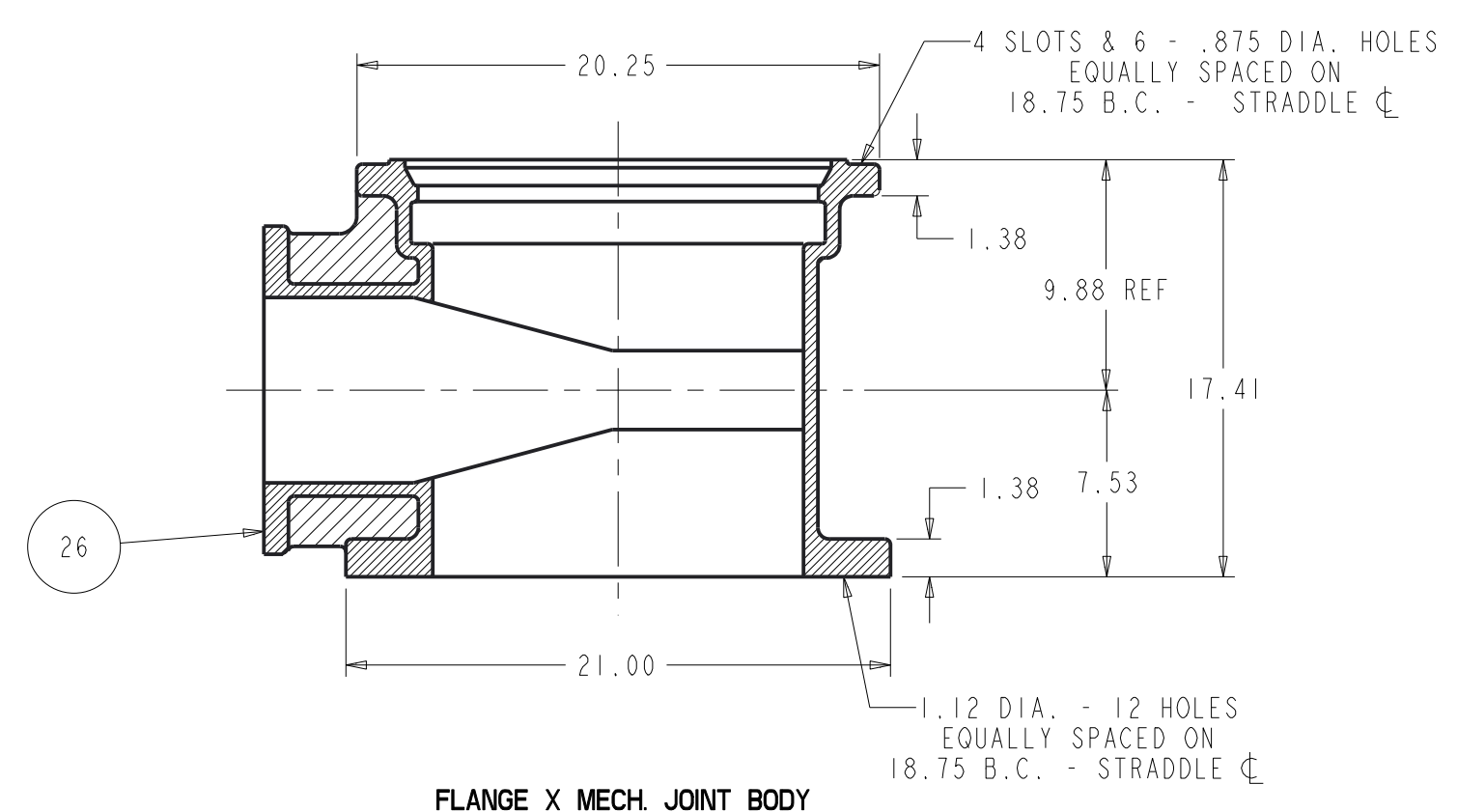


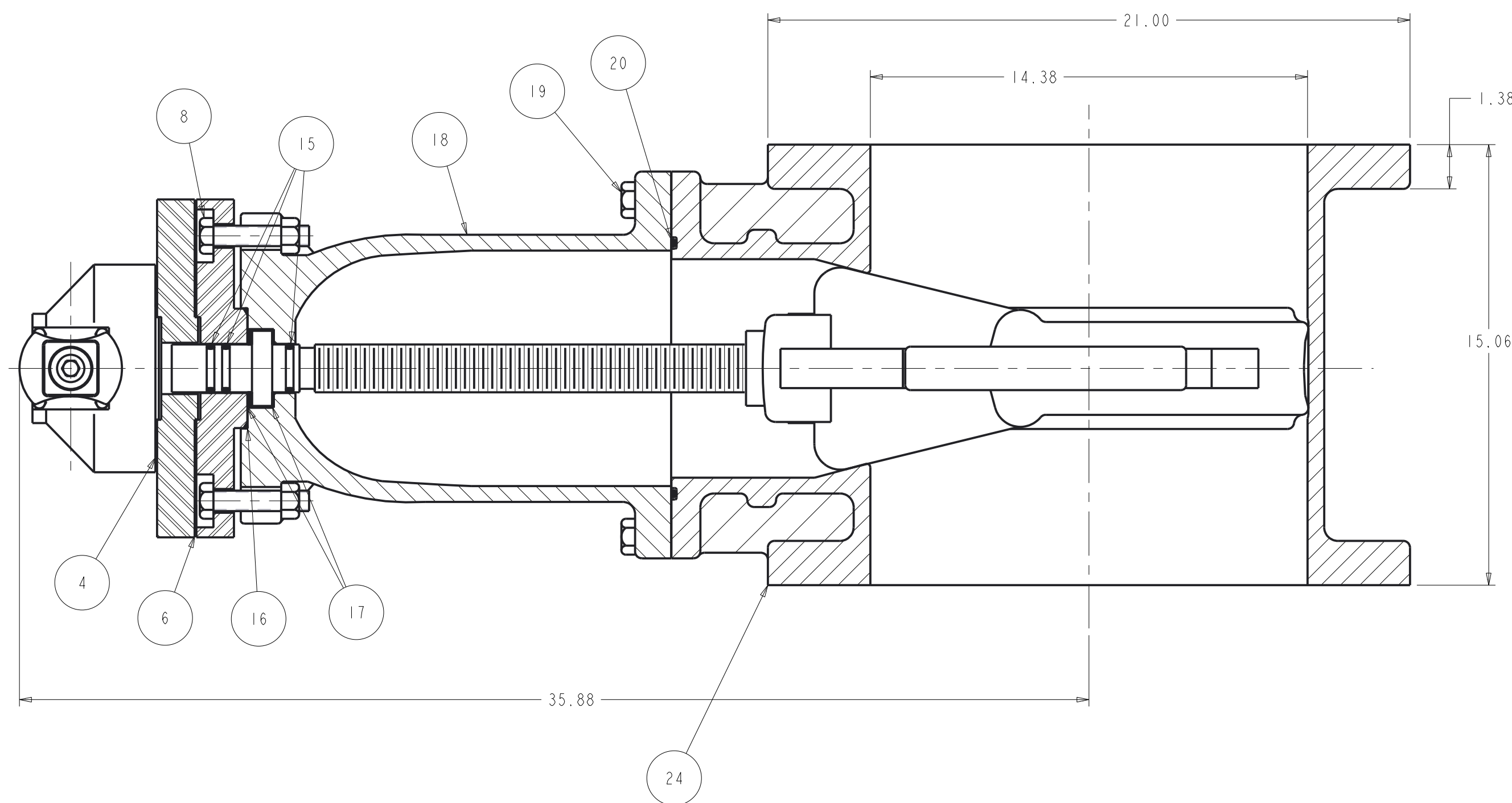
7300
A2361-RESILIENT WEDGE GATE VALVE - FLANGE X FLANGE ENDS, & MECH. JOINT X MECH. JOINT ENDS, & MECH. JOINT X MECH. JOINT ENDS



MECH. JOINT BODY



FLANGE X MECH. JOINT BODY



PARTS LIST - GEARED VALVE					
ITEM	DESCRIPTION	REQ'D	MATERIAL	ASTM	
1	CAP SCREW	1	STEEL	**	TYPE 316
2	WRENCH NUT	1	CAST IRON	A126	CLASS B
3	VALVE ACTUATOR	1			
4	ACTUATOR GASKET	1	SBR	D2000	
5	ADAPTER	1	STEEL	A36	
6	STUFFING BOX GASKET	1	SBR	D2000	
7	STUFFING BOX	1	STEEL	A36	
8	HEX HEAD BOLT	2	STEEL	**	TYPE 316
9	SOCKET HD. CAP SCREW	2	STEEL	**	TYPE 316
10	DRIVE SLEEVE	1	*		
11	KEY	1	STEEL		
12	STEM	1	BRONZE	B138	ALLOY C67600 H04
13	SOCKET HD. CAP SCREW	4	STEEL	**	TYPE 316
14	HEX HEAD BOLT	4	STEEL	**	TYPE 316
15	"O" RING	3	SBR	D2000	MUELLER R34
16	"O" RING	1	SBR	D2000	MUELLER R34
17	ANTI-FRICTION WASHER	2	BRASS		
18	BONNET	1	DUCTILE IRON	A536	
19	HEX BOLT	10	STEEL	**	TYPE 316
20	"O" RING	1	SBR	D2000	MUELLER R34
21	DISC NUT	1	BRONZE	B62	
22	DISC	1	***		
23	GUIDE CAP	2	ACETAL		M90
24	FLG X FLG BODY	1	DUCTILE IRON	A536	
25	MJ X MJ BODY	1	DUCTILE IRON	A536	
26	FLG X MJ BODY	1	DUCTILE IRON	A536	
31	EYE BOLT	2	STEEL		ANSI B18.15
32	HEX NUT	2	STEEL	A307	ANSI B18.15

* SUPPLIED W/ACTUATOR BUT FINISHED BY MUELLER CO.

** ASTM A193 FOR BOLTS & ASTM A194 FOR NUTS

*** RUBBER ENCAPSULATED DUCTILE IRON DISC
DUCTILE IRON - ASTM A536 (65-45-12 OR 70-50-05)
SBR - MUELLER RUBBER SPEC R88

DR BY	AO	4/14/16	UNLESS OTHERWISE NOTED	THIRD ANGLE PROJECTION	C.D. NO.
CHKD	BB	4/14/16	BREAK CAST CORNERS!		
ENGR	JWB	4/14/16	BREAK MACH CORNERS!		
MFR				PURCH.	FINISH
MFG			TOLERANCES	REF. NO.	SCALE
TOOL			UNLESS OTHERWISE NOTED	NONE	
FBRT			LINEAR	ANGULAR	STR. NO.
			±	±	

ECO 1729485

APPROVED
By Jason W. Bradley at 4:16 pm, Apr 14, 2016

MAT'L		DESCR.	14" RWGV W/SILICON BRONZE STEM - FLG. ENDS FLG. X M.J. ENDS, & M.J. X M.J. ENDS W/BEVEL GEARS W/316 STAINLESS STEEL BOLTS & NUTS	NUMBER	7300
Mueller Co.					