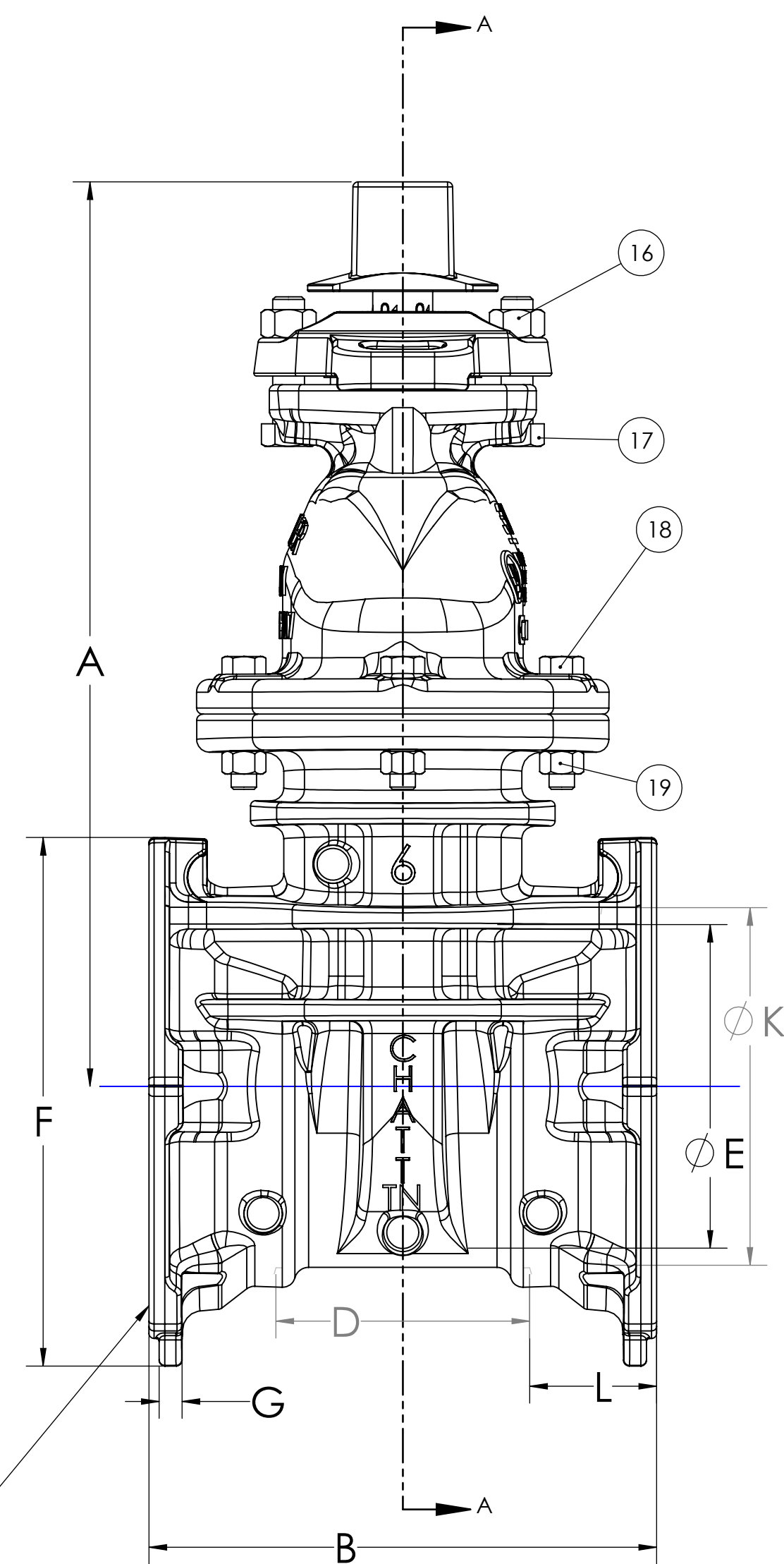
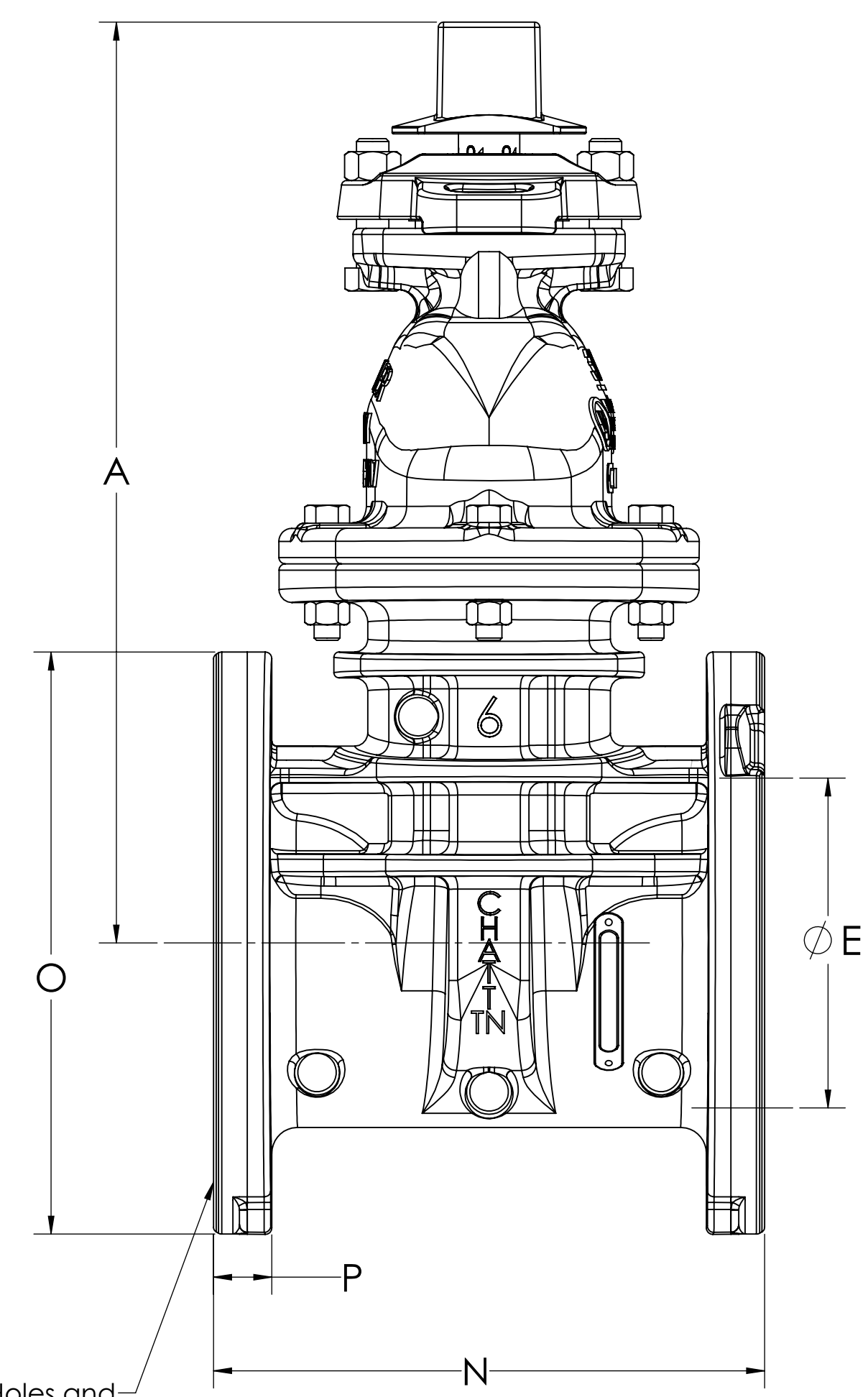


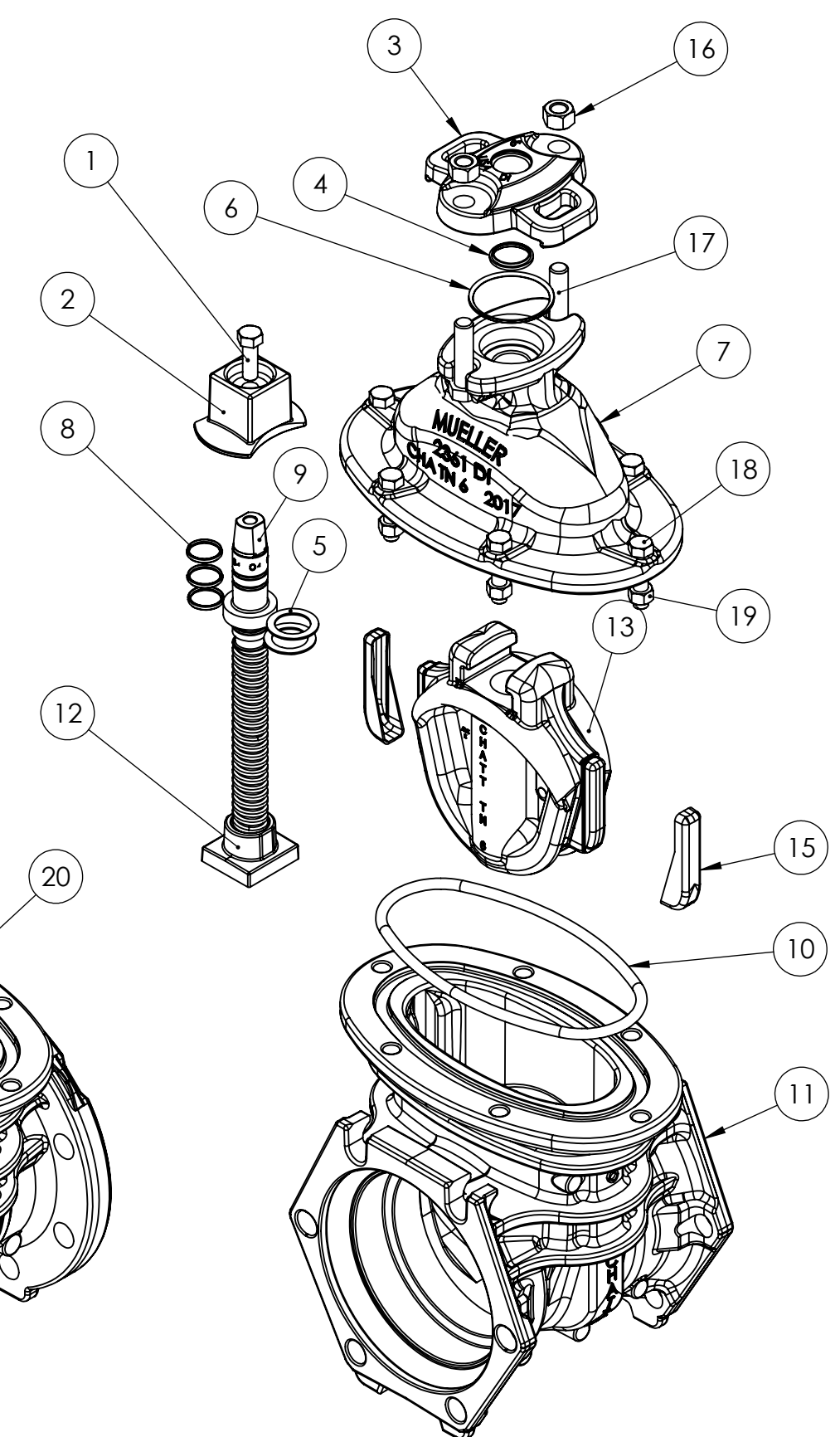
SECTION A-A - TYPICAL



MECH JOINT ENDS - MJ x MJ



FLANGE ENDS - FL x FL



ITEM NO.	DESCRIPTION	B. QTY.	MATERIAL	ASTM	NOTES
1	Cop Screw	1		F593	Group 2 - CW
2	Wrench Nut	1	Ductile Iron	A536	
3	Stuffing Box	1	Ductile Iron	A536	
4	Wiper Ring (dirt seal)	1	Thermoplastic Polyurethane	D412/ D624 D2240/D792	HY-52D
5	Anti-friction Washer	2	Acetal		
6	Stuffing Box O-Ring	1	Nitrile Rubber		R34
7	Bonnet	1	Ductile Iron	A536	
8	Stem O-ring	3	Nitrile Rubber		R34
9	Stem	1	Bronze	‡	See Note
10	Bonnet O-ring	1	Nitrile Rubber		R34
11	Body MJ Ends	1	Ductile Iron	A536	
12	Stem Nut	1	Bronze	B584	C89833 / NSF 372
13	Encapsulated Disc	1	◆	D2000	See Note
14	Disc Casting	1	Ductile Iron	A536	
15	Guide Cap	2	Acetal		
16	Stuffing box nuts	2		F594	Group 2 - CW
17	Stuffing box bolts	2		F593	Group 2 - SH
18	Bonnet bolts	"M"		F593	Group 2 - SH
19	Bonnet nuts	"M"		F594	Group 2 - CW
20	Body FL Ends		Ductile Iron	A536	

H - No. and Size of Holes and Slots Equally Spaced on

∅ J - Bolt Circle 2 MJ Ends

Q - No. and Size of Holes and Slots Equally Spaced on

∅ R - Bolt Circle 2 FL Ends

◆ Rubber Encapsulated Ductile Iron Disc
Ductile Iron - ASTM A536
Rubber Options
1. SBR - ASTM D2000
2. EPDM - ASTM D2000

‡ Bronze Stem Options:
1. Manganese - ASTM B138
• Alloy C67600
2. Everdur - ASTM B98
• Alloy C66100

APPROVED
By Matthew Sliger at 10:43 pm, Feb 23, 2017

ECO# 1744044

Valve Size	A	B	C	D	∅ E (Thru ∅)	F	G	H	∅ J (Bolt Circle ∅)	∅ K	L	M	Turns to Open	Weight MJ x MJ	N	O	P	Q	∅ R (Bolt Circle ∅)	Weight FL x FL
4	14.19	9.5	10.79	4.50	4.30	8.40	0.50	4-0.88	7.50	4.90	2.50	4	14	75	9.00	9.00	1.00	8-0.75	7.50	85
6	18.00	10	13.5	5.00	6.30	10.41	0.45	6-0.88	9.50	7.00	2.50	6	20.5	124	10.50	11.25	1.13	8-0.88	9.50	145
8	21.50	10.5	16.36	5.50	8.30	12.68	0.50	6-0.88	11.75	9.15	2.50	6	26.5	181	11.50	13.50	1.15	8-0.88	11.75	208
10	25.50	11.5	20	6.50	10.30	15.24	0.62	8-0.88	14.00	11.20	2.50	8	33	270	13.00	16.00	1.29	12-1.00	14.25	310
12	28.62	12	21	7.00	12.30	18.024	0.62	8-0.88	16.25	13.30	2.50	8	38.5	345	14.00	19.00	1.33	12-1.00	17.00	420

MUELLER CONFIDENTIAL
TITLE TO AND OWNERSHIP OF THIS ENGINEERING DATA REMAINS IN MUELLER CO. NO USE IS TO BE MADE OF THIS DATA EXCEPT AS SPECIFICALLY AUTHORIZED BY MUELLER CO. ASSENT ON THE PART OF THE RECEIPTS TO THESE CONDITIONS IS PRESUMED.

UNLESS OTHERWISE SPECIFIED: DIMENSIONS ARE IN INCHES TOLERANCES:
ANGULAR: ±
TWO DECIMAL: ±
THREE DECIMAL: ±



MATERIAL SEE TABLE
FINISH

DRAWN	JMH	DATE	9/1/2016
CHECKED	AO		
ENG APPR.	MS		
MFG APPR.			
Q.A.			

DESCR.		2361 RWGV 350W w/ 316 Fasteners		
SIZE	DWG. NO.	REV		
D	7334	0		
SCALE:	WEIGHT (lbs): SEE TABLE	SHEET 1 OF 1		

DO NOT SCALE DRAWING