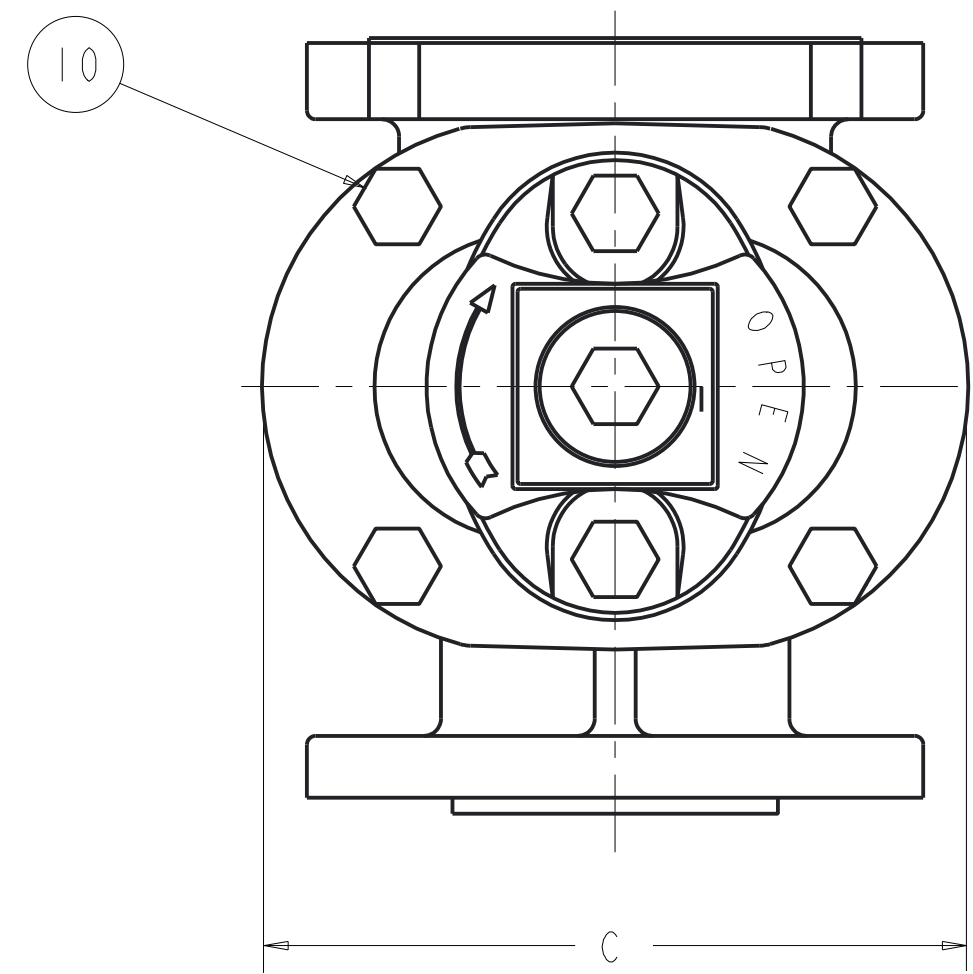
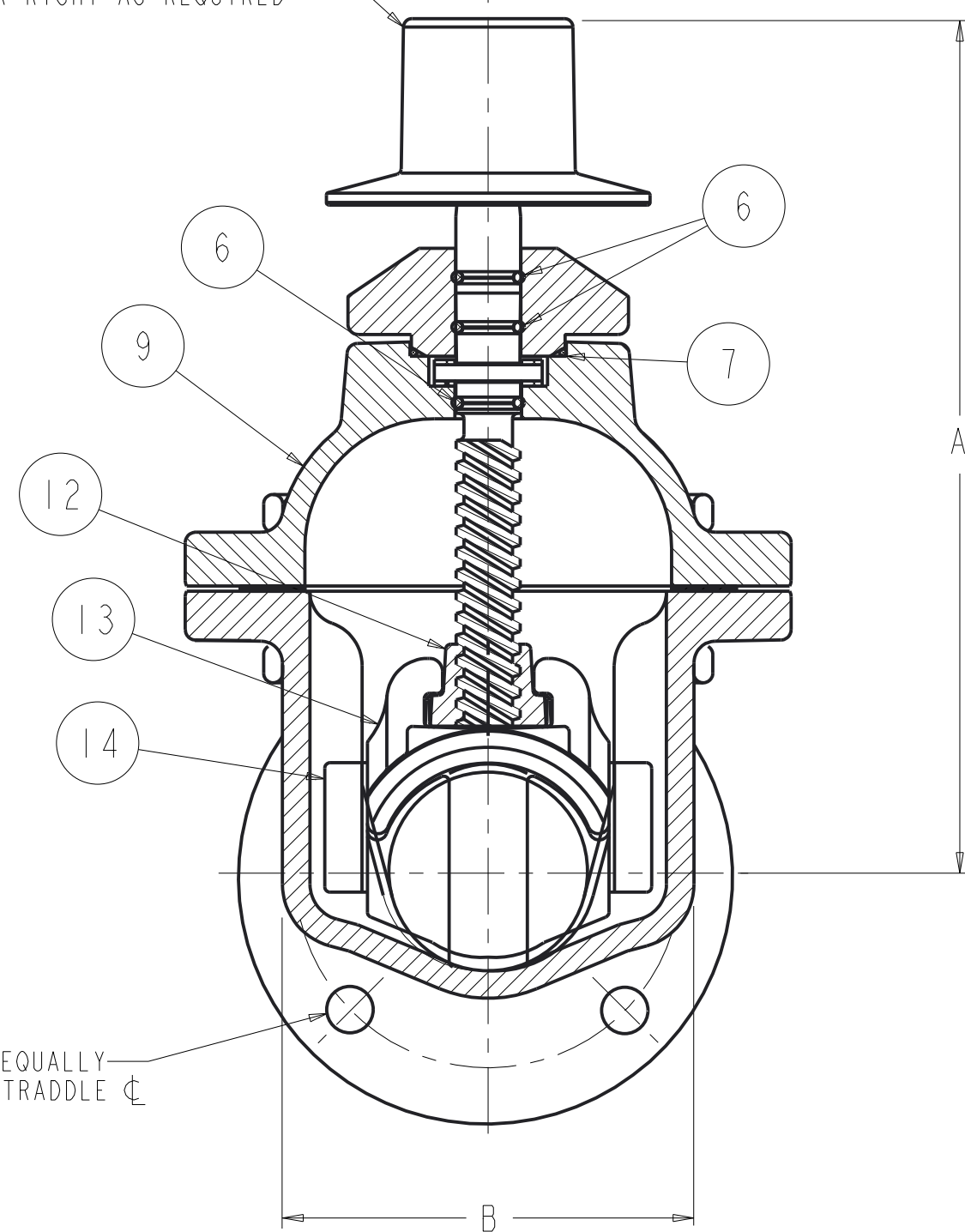


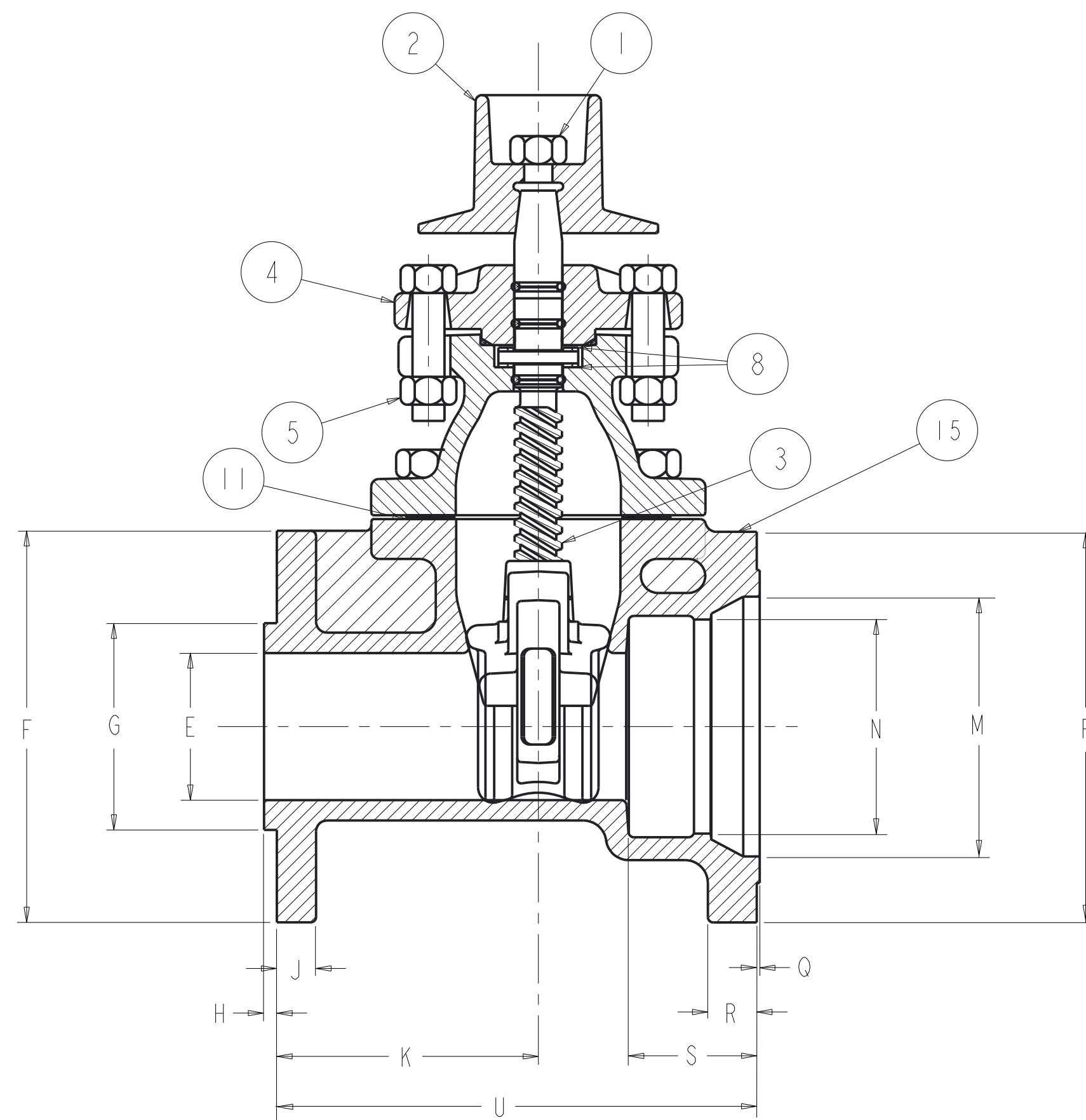
2 IN & 3 IN MUELLER T-2362-19 FLANGE X MECH. JOINT ENDS RESILIENT WEDGE TAPPING VALVE



2" SQUARE WRENCH NUT OR "D" DIA HANDWHEEL  
OPEN LEFT OR RIGHT AS REQUIRED



4 - .75 DIA. HOLES EQUALLY  
SPACED ON "L" B.C. - STRADDLE  $\phi$

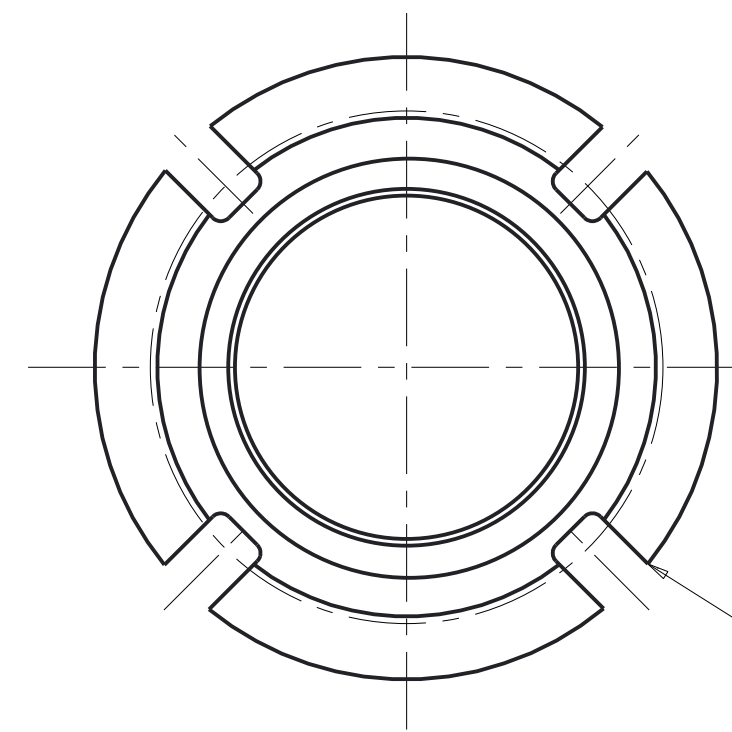


PART LIST					
ITEM	DESCRIPTION	REQ'D	MATERIAL	ASTM	
1	CAP SCREW	1	316 STAINLESS STEEL	F593	GROUP 2-CW
2	WRENCH NUT	1	DUCTILE IRON	A536	
3	STEM	1	BRONZE	B138	ALLOY C67600
4	STUFFING BOX	1	CAST IRON [SEE NOTE 2]	A126	CLASS B
5	STUFFING BOX BOLT STUFFING BOX NUT	2	316 STAINLESS STEEL 316 STAINLESS STEEL	F593 F594	GROUP 2-CW GROUP 2-CW
6	O-RING	3	RUBBER	D2000	NITIRLE
7	O-RING	1	RUBBER	D2000	NITIRLE
8	ANTI-FRICTION WASHER	2	ACETAL		
9	BONNET	1	DUCTILE IRON	A536	
10	BONNET BOLT BONNET NUT	"V"	316 STAINLESS STEEL 316 STAINLESS STEEL	F593 F594	GROUP 2-CW GROUP 2-CW
11	BONNET GASKET	1	RUBBER	D2000	NEOPRENE
12	DISC NUT	1	BRONZE	B584	
13	DISC	1	SEE NOTE 1 & 2		
14	GUIDE CAP	2	ACETAL		
15	BODY	1	DUCTILE IRON	A536	

NOTES:

1. RUBBER ENCAPSULATED CAST IRON DISC  
CAST IRON - ASTM A126 - CLASS B  
RUBBER - SBR - ASTM D2000

2. MANUFACTURER'S OPTION TO UPGRADE MAT'L  
TO D1 - A536 GR 65-45-12 OR 70-50-05



4 - .75 SLOTS EQUALLY SPACED  
ON "T" B.C. - STRADDLE  $\phi$

DIMENSIONS FOR MUELLER RESILIENT WEDGE TAPPING VALVE (this drawing only)

SIZE	A	B	C	D	E	F	G	H	J	K	L	M	N	P	Q	R	S	T	U	V	TURNS TO OPEN
2	9.88	4.77	7.02	6.00	2.30	6.00	2.97	.16	.69	4.36	4.75	3.53	2.61	6.25	.06	.81	2.29	4.75	8.33	4	8
3	12.38	6.01	8.63	8.00	3.30	7.50	3.97	.18	.75	4.55	6.00	4.98	4.08	7.50	.06	.94	2.56	6.19	8.80	6	11

**APPROVED**  
By Matthew Sliger at 10:04 am, Mar 06, 2017

SR BY: AD	2/24/17	UNLESS OTHERWISE NOTED	THIRD ANGLE PROJECTION	C.D. NO.
CHKD: BB	2/24/17	BREAK CAST CORNERS!		
ENGR: MS	2/24/17	BREAK MACH CORNERS!	PURCH: NO	FINISH: ASSY
MFR:			REF. NO.	SCALE: NONE
MFG:			STR. NO.	
TOOL:		TOLERANCES		
DRY:		UNLESS OTHERWISE NOTED		
		LINEAR: ±	ANGULAR: ±	
MAT'L: NOTED		DESCR: 2" & 3" RWTV - T2362		NUMBER: 7393