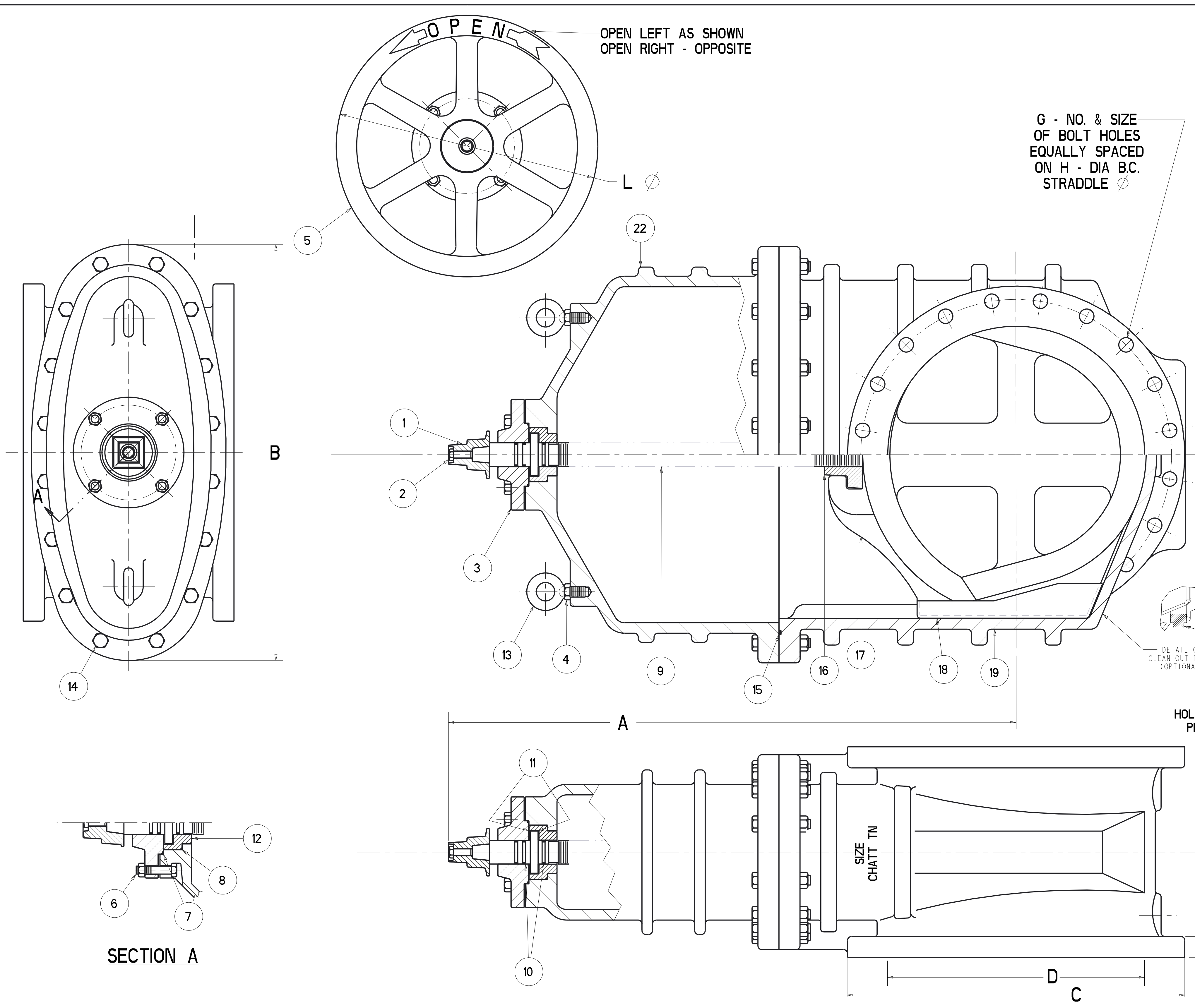


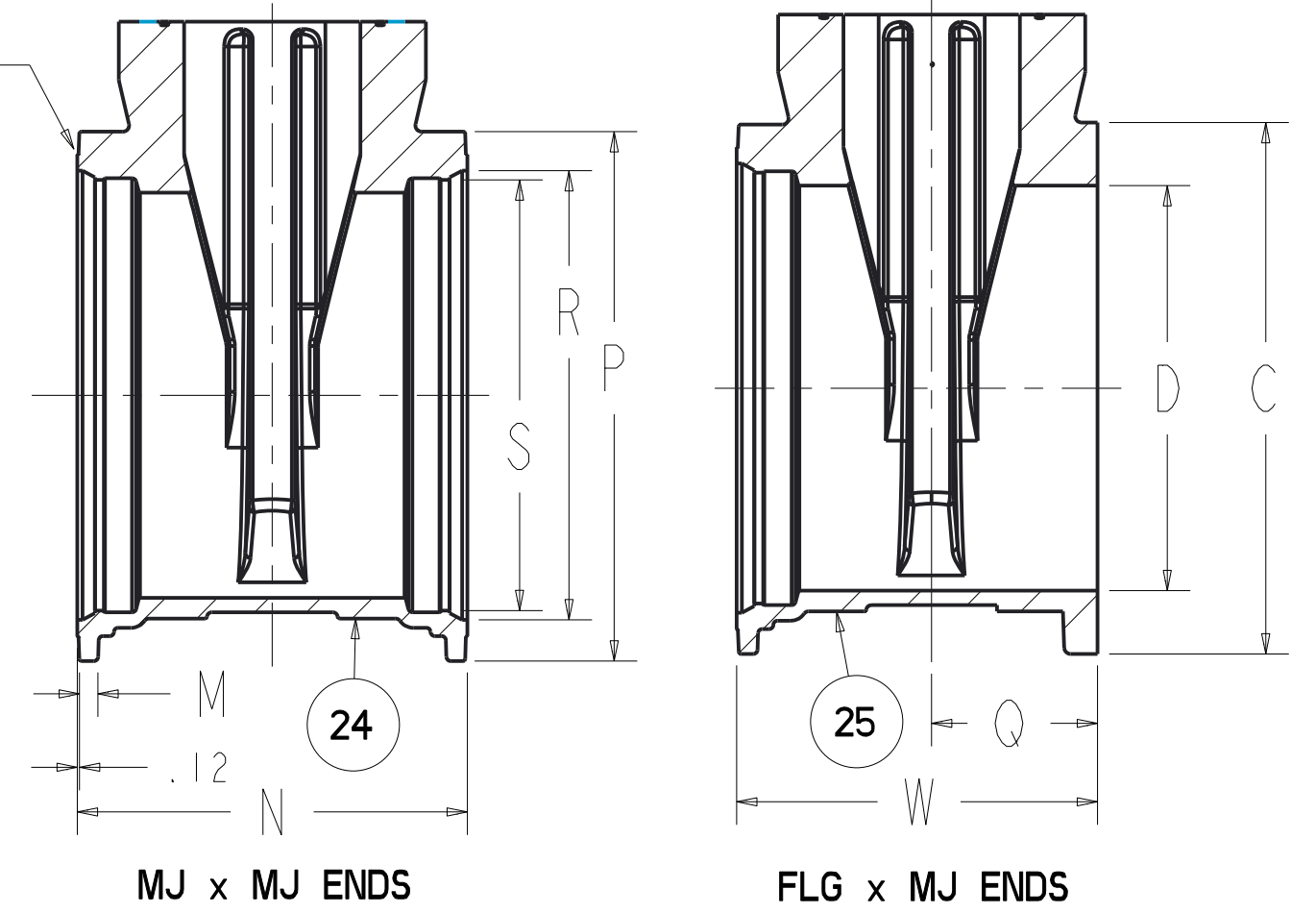
7405 18"-24" RWGV W/ 316 SS FASTENERS



PARTS LIST					
ITEM	DESCRIPTION	REQ'D	MATERIAL	ASTM	
1	WRENCH NUT	1	CAST IRON	A126	CLASS B
2	CAP SCREW	1	316 STAINLESS STEEL		SEE NOTE 2
3	STUFFING BOX	1	DUCTILE IRON	A236	
4	HEX NUT	2	316 STAINLESS STEEL		SEE NOTE 2
5	HANDWHEEL	1	CAST IRON	A126	CLASS B
6	SOCKET HEAD BOLT & NUT	4	316 STAINLESS STEEL		SEE NOTE 2
7	O-RING	1	RUBBER	D2000	EPDM
8	O-RING	1	RUBBER	D2000	EPDM
9	STEM	1	BRONZE		SEE NOTE 3
10	O-RING	3	RUBBER	D2000	EPDM
11	ANTI-FRICTION WASHER	2	BRASS		
12	BONNET BUSHING	1	BRONZE	B62	ALLOY C83600
13	EYE BOLT	2	STEEL		GALVANIZED
14	HEX BOLT & NUT	"J"	316 STAINLESS STEEL		SEE NOTE 2
15	O-RING	1	RUBBER	D2000	EPDM
16	DISC NUT	1	BRONZE	B62	ALLOY C83600
17	DISC ENCAPSULATED	1			SEE NOTE 1
18	GUIDE CAP	2	ACETAL		
19	BODY FL X FL ENDS	1	DUCTILE IRON	A536	
22	BONNET	1	DUCTILE IRON	A536	
23	PIPE PLUG	2	SUPPLIED WHEN TAPPED		
24	BODY MJ X MJ ENDS	1	DUCTILE IRON A536		
25	BODY FL X MJ	1	DUCTILE IRON A536		

NOTES:
 1) RUBBER ENCAPSULATED DUCTILE IRON DISC
 RUBBER - EPDM ASTM D2000
 DUCTILE IRON ASTM A536
 2) BOLTS ARE - 316 SS ASTM F593 GROUP 2-CW
 NUTS - 316 SS ASTM F594 GROUP 2-CW
 3) MANGANESE BRONZE ASTM B584 ALLOY C86400 OR C86500
 4) MANUFACTURER'S OPTION TO UPGRADE MATERIAL TO
 DUCTILE IRON A536 65-45-12 OR 70-50-05

VALVE SIZE	A	B	C	D	E	F	G	H	J	HANDWHEEL Ø L	M	N	P	Q	R	S	X	Z	TURNS TO OPEN
18	44.19	30.50	25.00	18.38	17.00	166	16 - 1.25	22.75	12	18.00	106	2100	24.88	8.50	20.74	19.64	12 - .875	12.00	57
20	48.25	33.75	27.50	20.38	18.00	178	20 - 1.25	25.00	12	18.00	160	2150	27.25	9.00	22.84	21.74	14 - .875	12.00	63
24	53.88	39.50	32.00	24.38	20.00	200	20 - 1.38	29.50	16	30.00	112	2350	31.88	10.00	27.05	25.94	16 - .875	12.00	75



APPROVED
 By Matthew Sliger at 3:08 pm, May 05, 2017

DR BY: AJO 5/1/17	UNLESS OTHERWISE NOTED	THIRD ANGLE PROJECTION	C.D. NO.
CHKD: BB 5/1/17	BREAK CAST CORNERS!		
ENGR: MS 5/1/17	BREAK MACH CORNERS!		
MFG:	TOLERANCES	REF. NO.	SCALE
INFO:	UNLESS OTHERWISE NOTED		NONE
TOOL:	LINEAR	ANGULAR	
FBY:	±	±	STR. NO.
MAT. L:	NOTED		
DESCR. 18"-24" RWGV W/ 316 SS FASTENERS		NUMBER 7405	

Mueller Co.