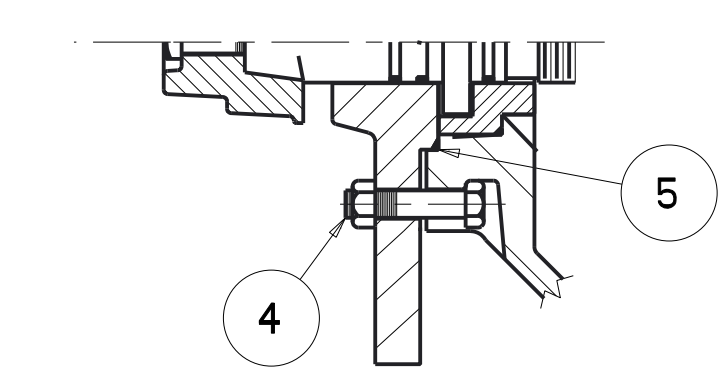
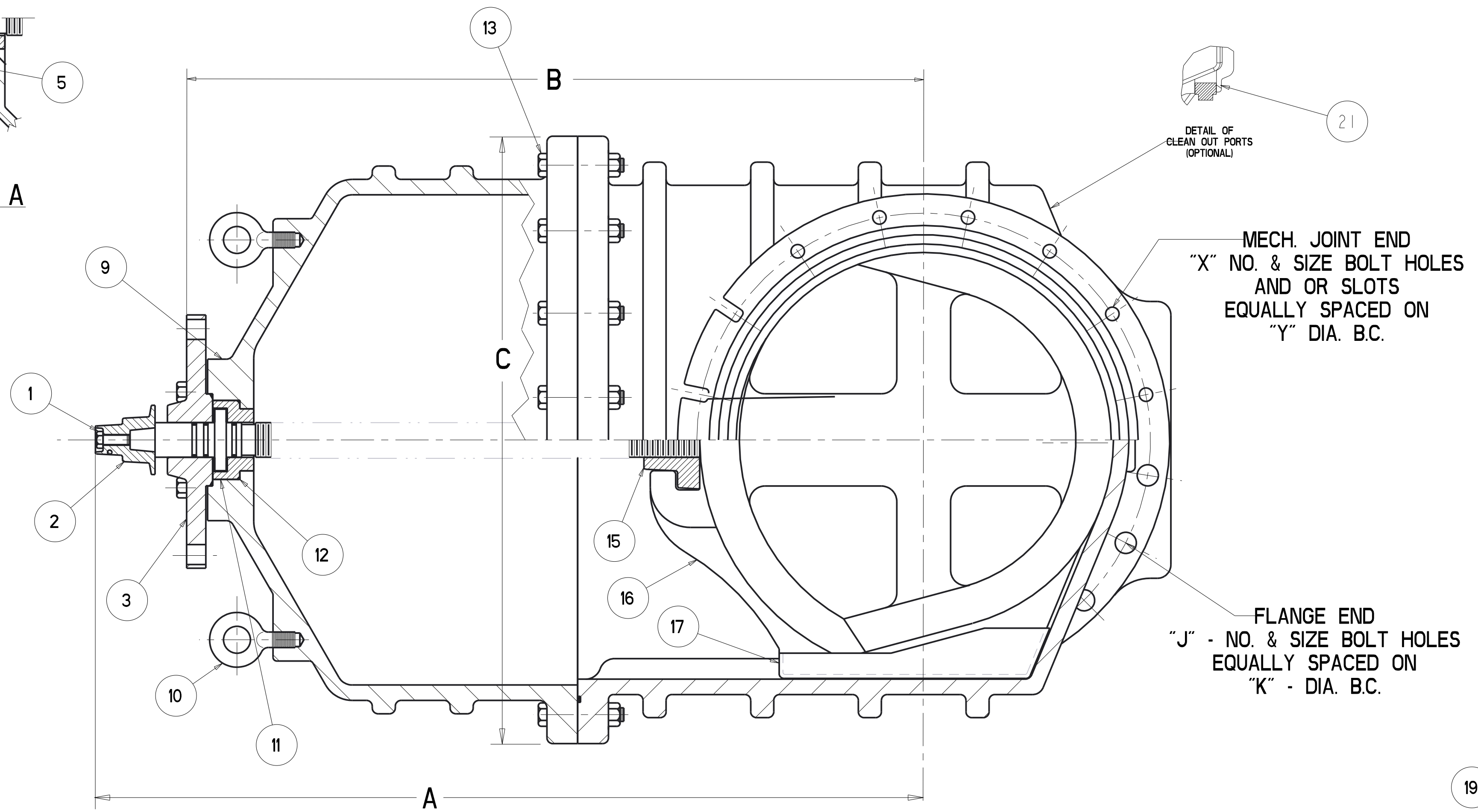
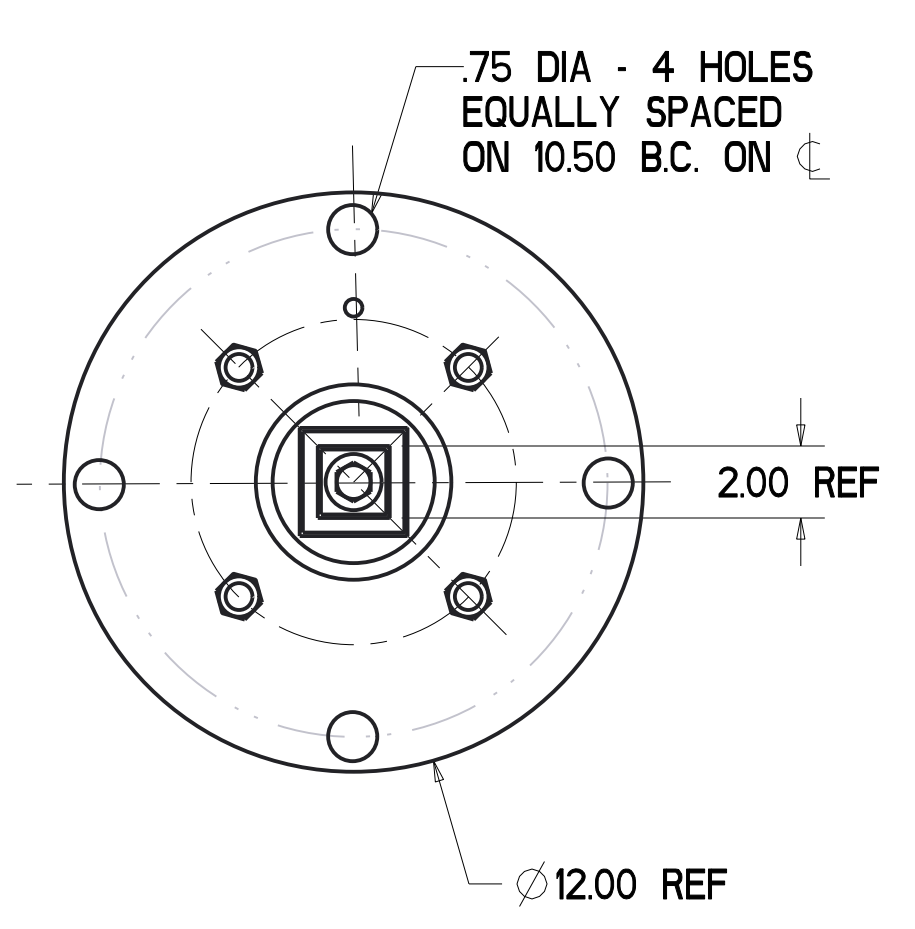


14" - 24" RWGV - ALL END CONFIGURATIONS - POST INDICATOR VALVE

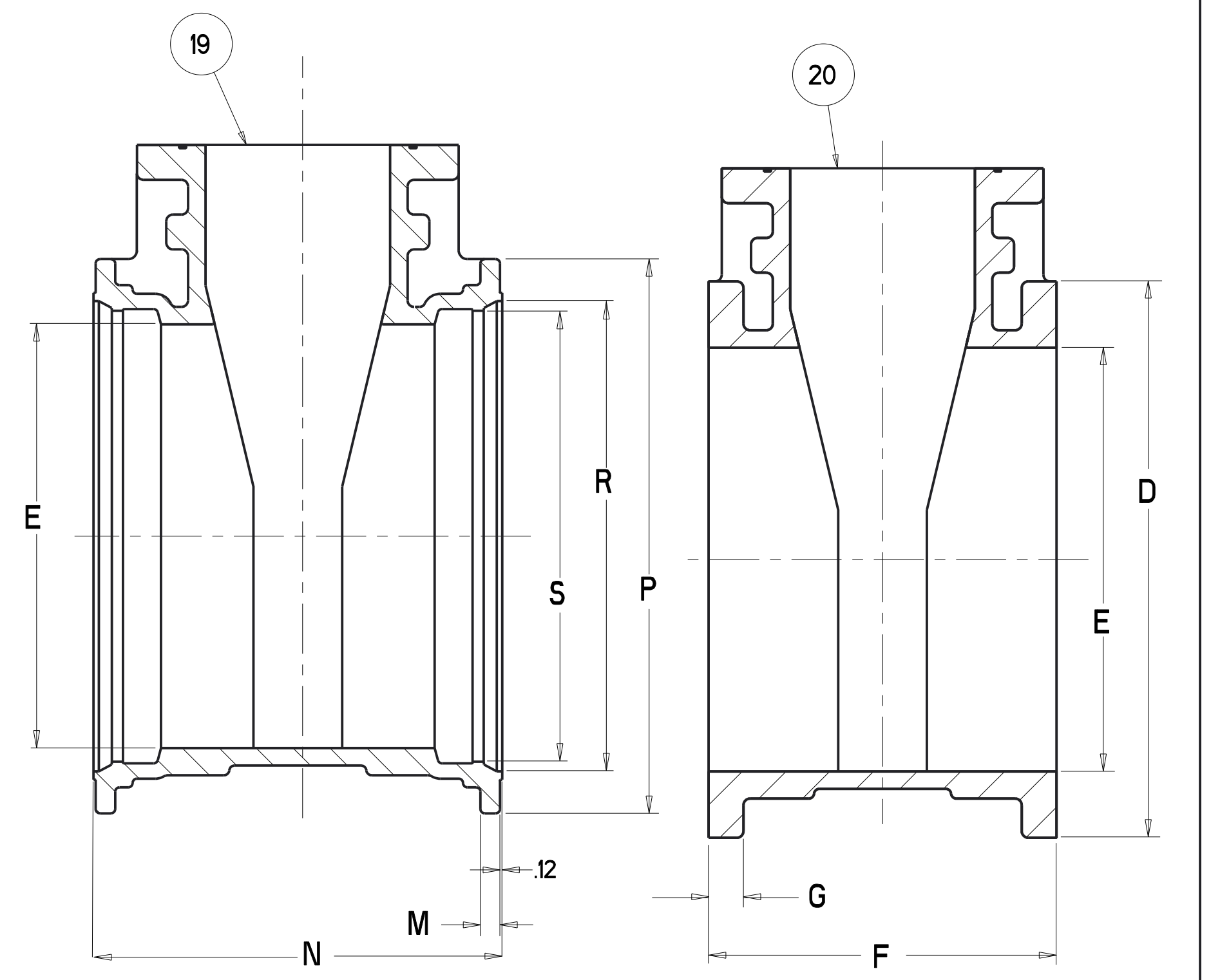
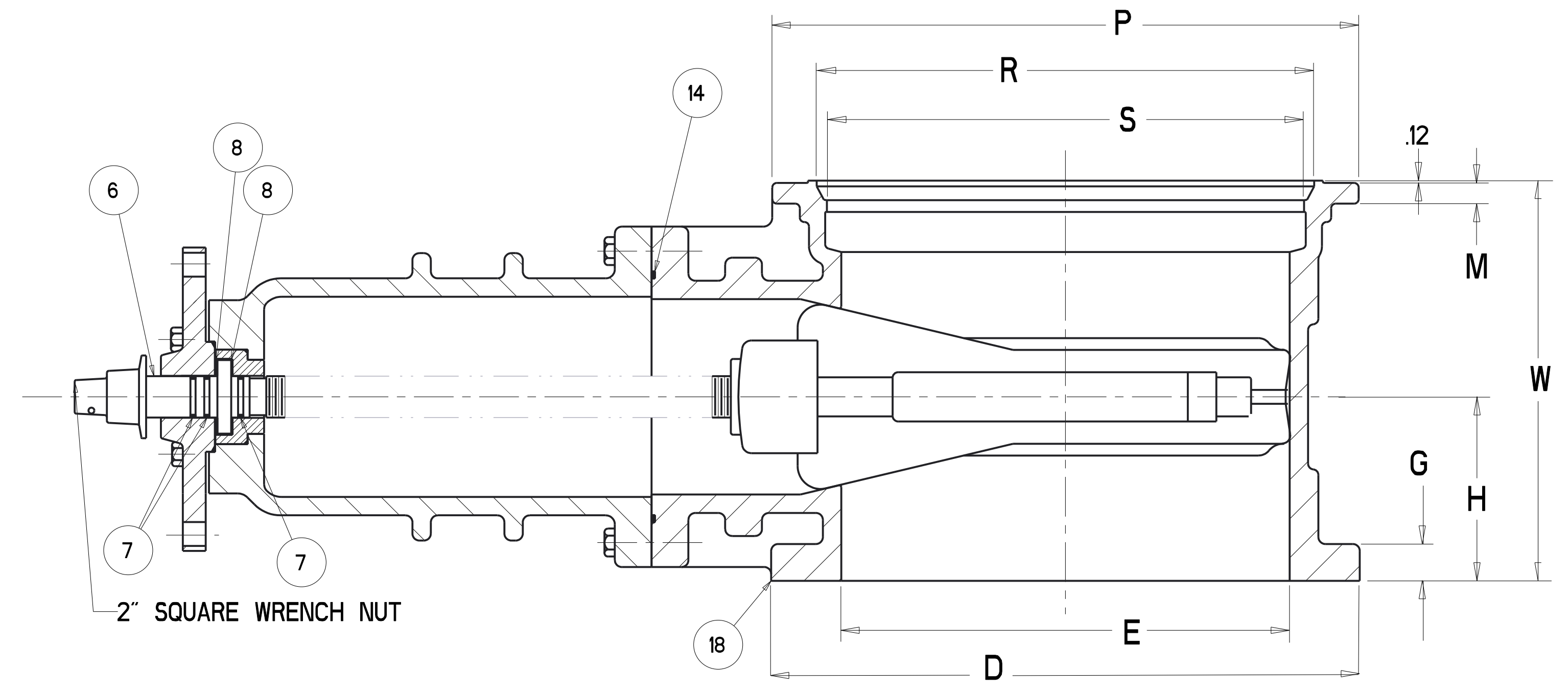


SECTION A



PARTS LIST				
ITEM	DESCRIPTION	REQ'D	MATERIAL	ASTM
1	CAP SCREW	1	316 STAINLESS STEEL	SEE NOTE 3
2	WRENCH NUT	1	CAST IRON (SEE NOTE 4)	A126 CLASS B
3	STUFFING BOX	1	DUCTILE IRON	A536
4	HEX BOLT & NUT	"AA"	316 STAINLESS STEEL	SEE NOTE 3
5	O-RING	1	RUBBER	SEE NOTE 10
6	STEM	1	BRONZE	SEE NOTE 1
7	O-RING	3	RUBBER	SEE NOTE 10
8	WASHER	2	BRASS	
9	BONNET	1	DUCTILE IRON	A536
10	EYEBOLT	2	STEEL	GALVANIZED
11	BONNET BUSHING	1	BRONZE	B62
12	O-RING	1	RUBBER	SEE NOTE 10
13	HEX BOLT & NUT	"L"	316 STAINLESS STEEL	SEE NOTE 3
14	O-RING	1	RUBBER	SEE NOTE 10
15	DISC NUT	1	BRONZE	B62
16	DISC	1		SEE NOTE 2
17	GUIDE CAP	2	ACETAL	
18	BODY FL x MJ	1	DUCTILE IRON	A536
19	BODY MJ x MJ	1	DUCTILE IRON	A536
20	BODY FL x FL	1	DUCTILE IRON	A536
21	PIPE PLUG	2	SUPPLIED WHEN TAPPED	

- NOTES:**
- 14"-16" VALVES USE BRONZE ASTM B138 ALLOY 67600
18" TO 24" VALVES - BRONZE ASTM B584 ALLOY 86400 OR 86500
30" VALVES USE BRONZE ASTM B584 ALLOY 86200 OR 86700
 - RUBBER ENCAPSULATED DUCTILE IRON DISC
RUBBER - SBR (14"-16") ASTM D2000 EPDM 18"-24" ASTM D2000 DUCTILE IRON ASTM A536 GRADE 65-45-12
 - BOLTS ARE - 316 STAINLESS STEEL ASTM F593 GROUP 2
NUTS - 316 STAINLESS STEEL ASTM F594 GROUP 2
 - MANUFACTURER'S OPTION TO UPGRADE MATERIAL TO DUCTILE IRON A536 GRADE 65-45-12
 - 14"-16" VALVES DO NOT HAVE A BONNET BUSHING
 - VALVE BODY, BONNET AND STUFFING BOX ARE COATED WITH NOMINAL 10 MIL MUELLER PRO-GARD FUSION EPOXY POWDER ON INTERNAL AND EXTERNAL SURFACES PER AWWA C550
 - 250 PSI MAXIMUM WORKING PRESSURE, 500 PSI STATIC TEST PRESSURE
 - 33° F MINIMUM WORKING TEMPERATURE, 125° F MAXIMUM WORKING TEMPERATURE
 - DRILLED TO ASME CLASS 125/150 FF
 - 14"-16" O-RINGS - ASTM D2000 R 34(NITRILE)
18" VALVES AND UP- ASTM D2000 R73 (EPDM)



VALVE SIZE	A	B	C	D	E	F	G	H	J	K	L	M	N	P	R	S	W	X	Y	AA	TURNS TO OPEN
14	32.75	29.75	24.92	21.00	14.38	15.06	142	7.53	12 - 112	18.75	10	1.31	19.75	20.62	16.54	15.44	17.41	10 - .88	18.75	2	43.5
16	37.88	32.35	26.58	23.50	16.00	16.06	159	8.03	16 - 112	21.25	12	0.91	19.75	22.56	18.40	17.28	17.91	12 - .88	21.00	2	49
18	44.19	38.35	30.50	25.00	18.38	17.00	169	8.50	16 - 125	22.75	12	1.05	21.00	24.88	20.74	19.64	19.00	12 - .88	23.25	4	57
20	48.25	41.48	33.75	27.50	20.38	18.00	178	9.00	20 - 125	25.00	12	1.60	21.50	27.25	22.84	21.74	19.75	14 - .88	25.50	4	63
24	53.88	47.94	39.50	32.00	24.38	20.00	2.00	10.00	20 - 138	29.50	16	1.12	23.50	31.88	27.05	25.94	21.75	16 - .88	30.00	4	75

APPROVED
By Matthew Sliger at 3:53 pm, Jun 27, 2017

SR BY: AO 05/17/17	UNLESS OTHERWISE NOTED	THIRD ANGLE PROJECTION	C.D. NO.
CHKD: BB 05/17/17	BREAK CAST CORNERS!		PART. NO.
ENGR: MS 05/17/17	BREAK MACH CORNERS!		
MFR:	TOLERANCES	PURCH: NO	FINISH: ASM
MFG:	UNLESS OTHERWISE NOTED	REF. NO.	SCALE: NONE
TOOL:	LINEAR ±	ANGULAR ±	STR. NO.
FBKT:			
MAT'L: NOTED		DESCR: 14"-24" RWGV ALL END CONFIGURATIONS POST INDICATOR VALVE	
		NUMBER: 7411	