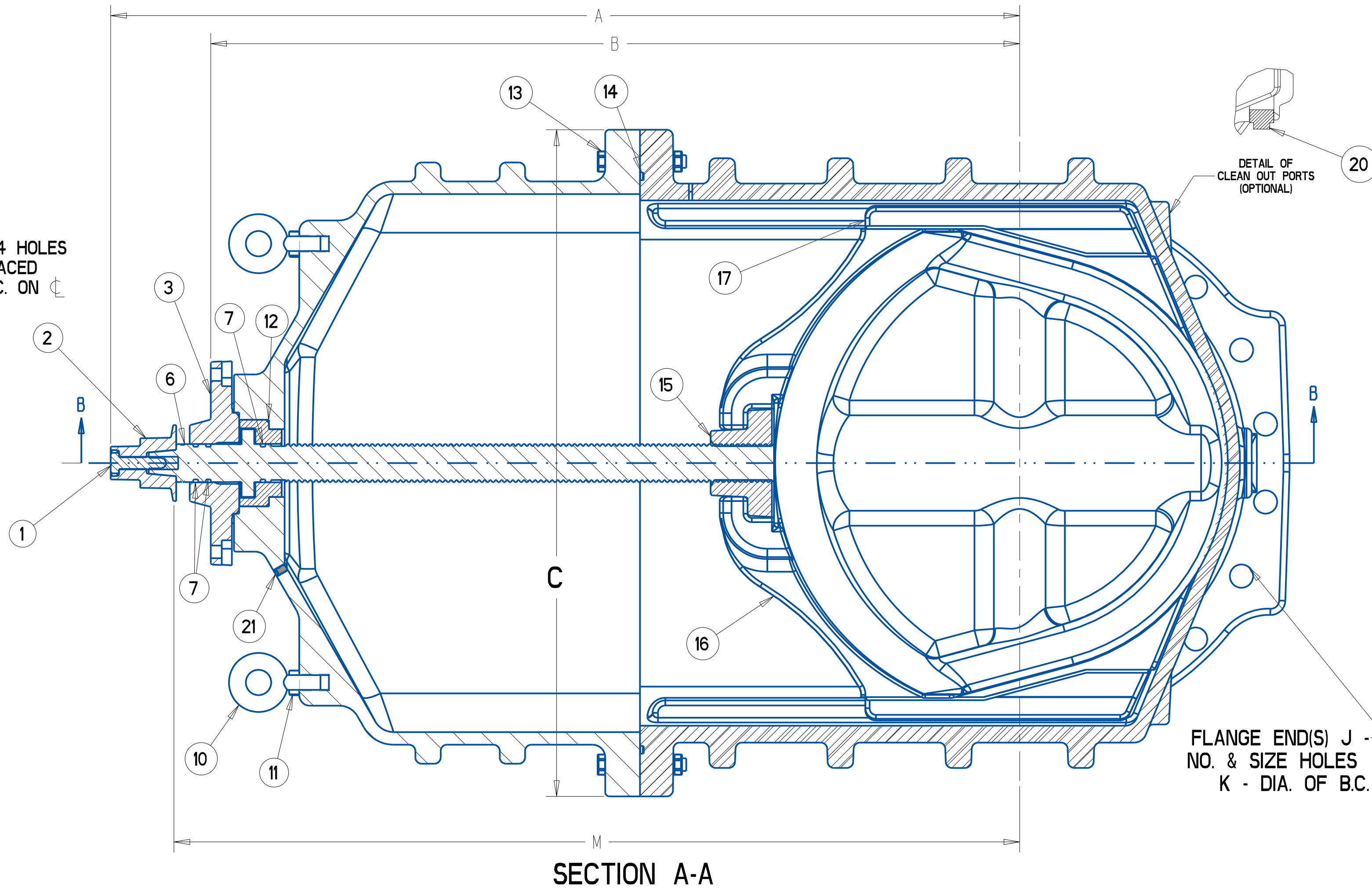
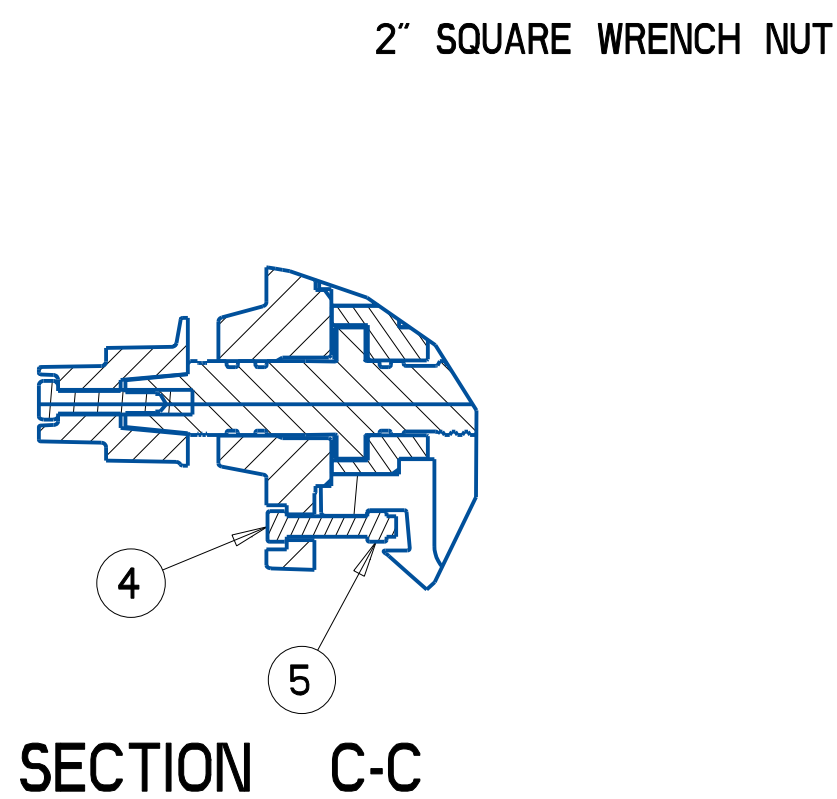


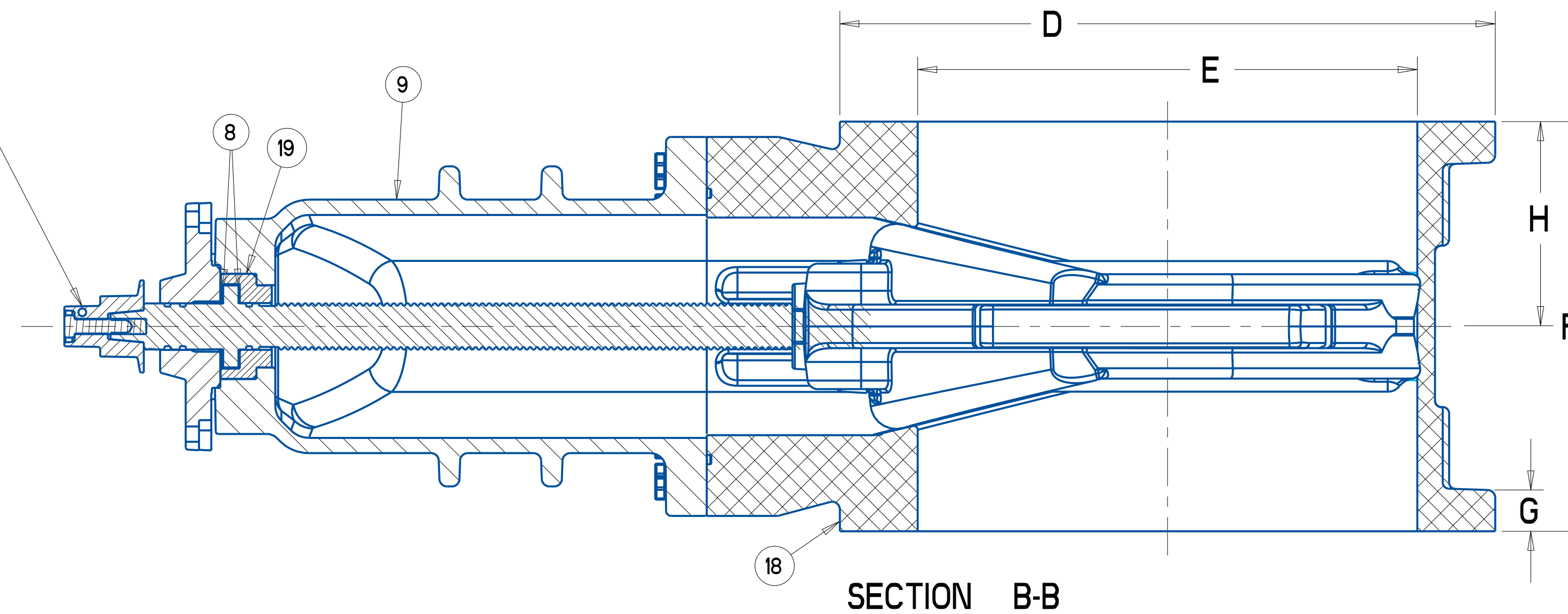
0.75" DIA - 4 HOLES
EQUALLY SPACED
ON 10.50" B.C. ON



SECTION A-A



SECTION C-C



SECTION B-B

PARTS LIST					
ITEM	DESCRIPTION	REQ'D	MATERIAL	ASTM	
1	CAP SCREW	1	316 STAINLESS STEEL		SEE NOTE 3
2	WRENCH NUT	1	DUCTILE IRON	A536	
3	STUFFING BOX	1	DUCTILE IRON	A536	
4	HEX BOLT	N	316 STAINLESS STEEL		SEE NOTE 3
5	HEX NUT	N	316 STAINLESS STEEL		SEE NOTE 3
6	STEM	1	BRONZE		SEE NOTE 1
7	O-RING	1	RUBBER	D2000	NITRILE (R34) 14"-16" EPDM (R73) 18"-24"
8	WASHER	2	BRASS		
9	BONNET	1	DUCTILE IRON	A536	
10	EYEBOLT	2	STEEL		GALVANIZED
11	HEX NUT	2	STEEL		GALVANIZED
12	O-RING	1	RUBBER	D2000	NITRILE (R34) 14"-16" EPDM (R73) 18"-24"
13	HEX BOLT & NUT	"L"	316 STAINLESS STEEL		SEE NOTE 3
14	O-RING	3	RUBBER	D2000	NITRILE (R34) 14"-16" EPDM (R73) 18"-24"
15	DISC NUT	1	BRONZE	B62	
16	DISC	1	RUBBER	D2000	SEE NOTE 2
17	GUIDE CAP	2	ACETAL		
18	BODY FLANGE ENDS	1	DUCTILE IRON	A536	
19	BONNET BUSHING	1	BRONZE	B62	SEE NOTE 4
20	PIPE PLUG	2	SUPPLIED WHEN TAPPED		
21	PIPE PLUG	1	STEEL		SEE NOTE 3

- NOTE:
- 1) 14"-16" VALVES USE BRONZE ASTM B138 ALLOY 67600
18" TO 24" VALVES - BRONZE ASTM B584 ALLOY 86400 OR 86700
 - 2) RUBBER ENCAPSULATED DUCTILE IRON DISC
RUBBER - SBR (14"-16") ASTM D2000 EPDM 18"-24" ASTM D2000
DUCTILE IRON ASTM A536 GRADE 65-45-12 OR 70-50-05
 - 3) BOLTS ARE - 316 STAINLESS STEEL ASTM F593 GROUP 2-CW
NUTS - 316 STAINLESS STEEL ASTM F594 GROUP 2-CW
 - 4) 14"-16" VALVES DO NOT HAVE A BONNET BUSHING
 - 5) VALVE BODY, BONNET AND STUFFING BOX ARE COATED WITH
NOMINAL 10 MIL MUELLER PRO-GARD EPOXY COATING
ON INTERNAL AND EXTERNAL SURFACES PER AWWA C550
 - 6) 250 PSI MAXIMUM WORKING PRESSURE, 500 PSI STATIC TEST PRESSURE
 - 7) 33°F MINIMUM WORKING TEMPERATURE, 125°F MAXIMUM WORKING
TEMPERATURE
 - 8) DRILLED TO ASME CLASS 125/150 FF

DIMENSIONS FOR MUELLER RESILIENT WEDGE VALVES															
VALVE SIZE	A	B	C	D	E	F	G ^(A) MINIMUM	H	J	K	L	M	N	WEIGHT (kg)	TURN TO OPEN
14	32.75	29.75	24.92	21.00	14.38	15.06	1.00	7.53	12 - 1.12	18.75	10	31.49	2	705	45
16	33.88	32.35	26.58	23.50	16.00	16.06	1.00	8.03	16 - 1.12	21.25	12	34.38	4	858	49
18	44.19	38.35	30.50	25.00	18.38	17.00	1.00	8.50	16 - 1.25	22.75	12	40.69	4	1298	57
20	48.25	41.48	33.75	27.50	20.38	18.00	1.13	9.00	20 - 1.25	25.00	12	44.75	4	1632	63
24	53.88	47.94	39.50	32.00	24.38	20.00	1.19	10.00	20 - 1.38	29.50	16	50.38	4	2488	75

ECO 2432237 1.00
WAS 1.42, 1.00 WAS
1.59, 1.00 WAS 1.69,
1.13 WAS 1.78, 1.19
WAS 2.00 AO 8/9/19

APPROVED
By Matt Sliger at 8:28 am, Aug 13, 2019

DR BY: AD 05/17/17	UNLESS OTHERWISE NOTED	THIRD ANGLE PROJECTION	C.D. NO.
CHKD: BB 05/17/17	BREAK CAST CORNERS!		PATT. NO.
ENGR: MS 05/17/17	BREAK MACH CORNERS!		
MFR:	TOLERANCES	PURCH: NO	FINISH: ASSY
MFG:	UNLESS OTHERWISE NOTED	REF. NO.	SCALE: NONE
TOOL:	LINEAR ±	ANGULAR ±	STR. NO.
FBY:	MAT'L NOTED		
DESCR: 14"-24" RWGV POST INDICATING VALVE		NUMBER: 7411	

Mueller Co.

7411 14"-24" RWGV POST INDICATOR VALVE