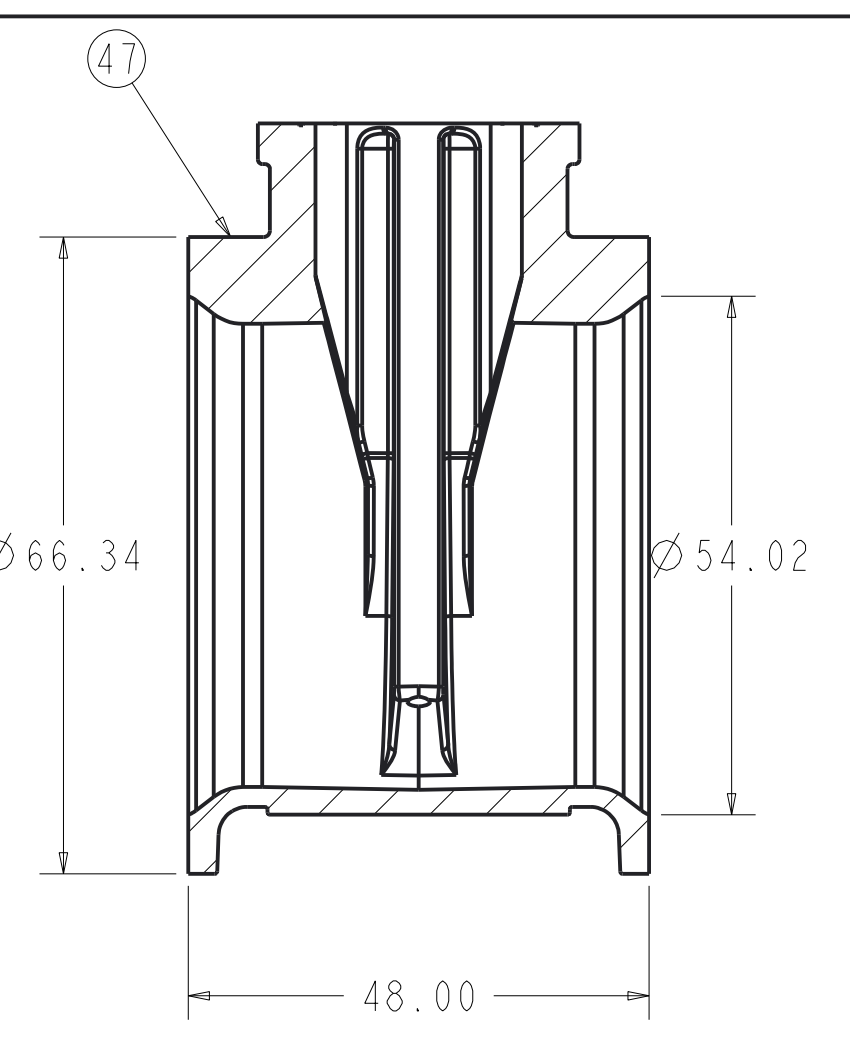
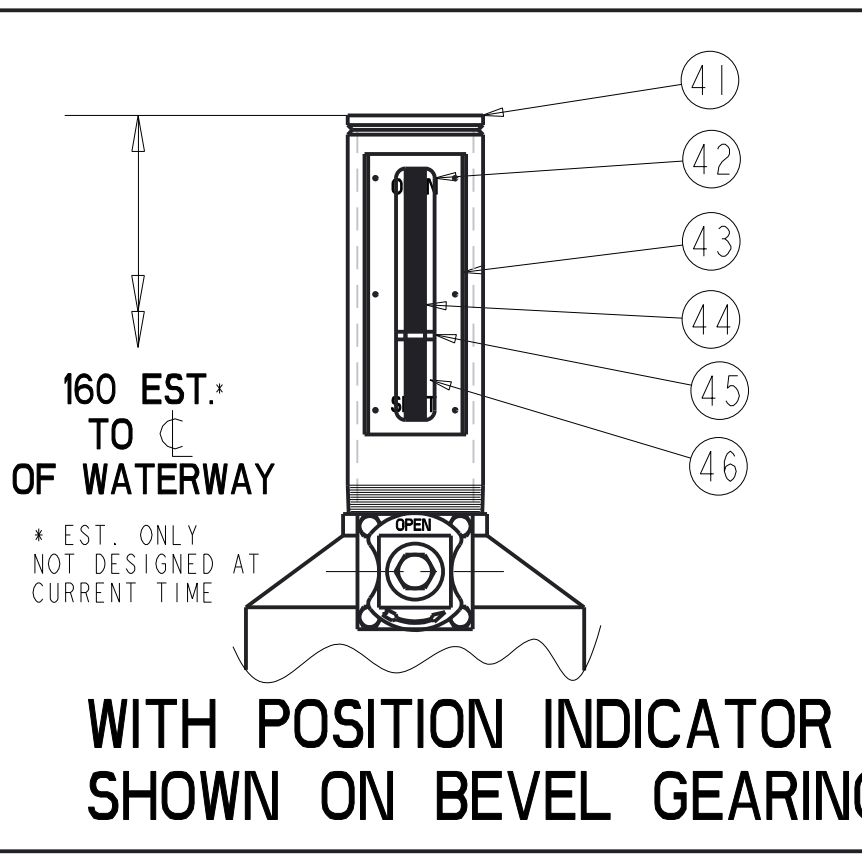
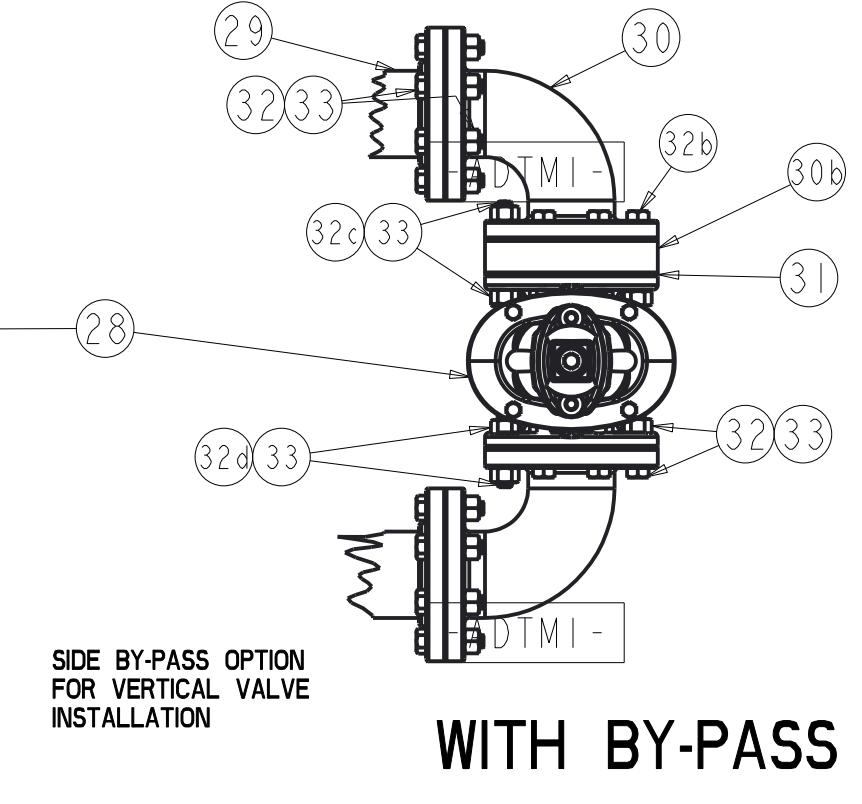
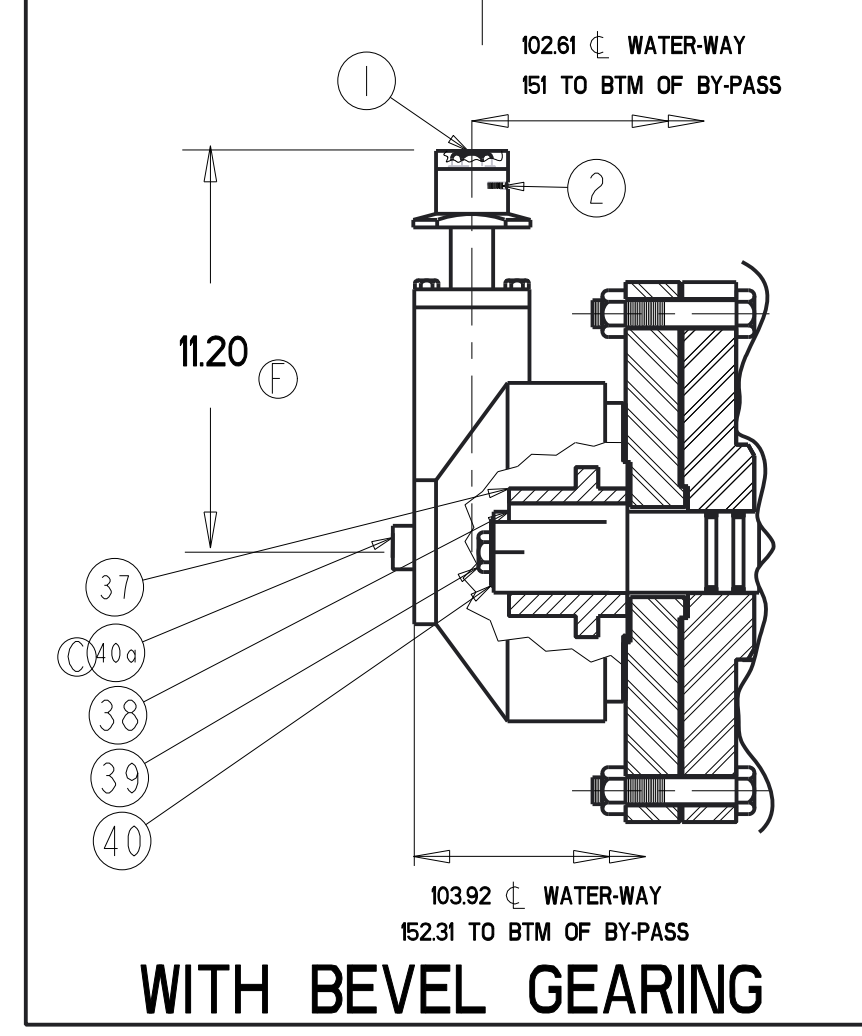
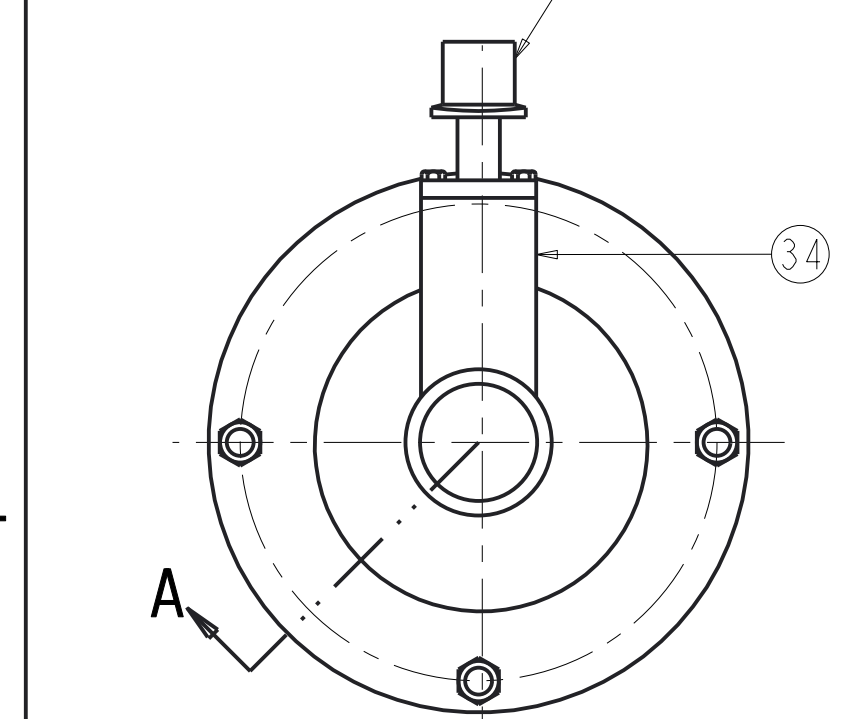


2" SQUARE WRENCH NUT
OR 24" DIA HANDWHEEL
OPEN LEFT OR RIGHT
AS REQUIRED



PART LIST 48" RWGV ASSEMBLY WITH SPUR GEAR OPERATOR SHOWN 19300 lbs (approx.)

ITEM	DESCRIPTION	REQ'D	MATERIAL	ASTM	CLASS
1	WRENCH NUT (SEE NOTE 6)	1	CAST IRON	A126	CLASS B
2	SET SCREW	1	STEEL		
3	SPUR GEAR (SEE NOTE 5)	1			
4	HEX BOLT 3/4" x 6.00"	4	316 STAINLESS STEEL		SEE NOTE 3
5	ADAPTER	1	HOT ROLLED STEEL	A36	
6	STUFFING BOX w/SPUR GEAR	1	HOT ROLLED STEEL	A36	
7	HEX NUT 3/4"	4	316 STAINLESS STEEL		SEE NOTE 3
8	SO. HEAD PIPE PLUG 1/4-18NPT	1	316 S. STEEL		
9	O-RING 5 1/8"x5 3/8"x 1/8" #251	1	RUBBER	D2000	EPDM
10	O-RING 3 3/8" x 3 3/4" x 3/16" #340	3	RUBBER	D2000	EPDM
11	O-RING 6 1/4"x6 5/8"x 3/16" #362	1	RUBBER	D2000	EPDM
12	ANTI-FRICTION (THRUST) WASHER	2	BRASS		HARD CDA260
13	SOCKET HEAD BOLT 3/4"x2 1/4"-BEVEL GEAR	4	316 STAINLESS STEEL		SEE NOTE 3
	SOCKET HEAD BOLT 3/4"x1 1/2"-SPUR GEAR	4	316 STAINLESS STEEL		SEE NOTE 3
14	SOCKET HEAD BOLT 1" x 5-1/2"	4	316 STAINLESS STEEL		SEE NOTE 3
15	HEAVY HEX NUT 1"	4	316 STAINLESS STEEL		SEE NOTE 3
16	EYEBOLT 1 1/2"	2	STEEL		GALVANIZED
17	HEX NUT 1 1/2"	2	STEEL		SEE NOTE 3
18	BONNET BUSHING	1	BRONZE	B62	
19	STEM	1	BRONZE		SEE NOTE 1
20	BONNET	1	DUCTILE IRON	A536	
21	HEX BOLT 1 1/4" x 9 1/2"	28	316 STAINLESS STEEL		SEE NOTE 3
22	HEX NUT 1 1/4"	28	316 STAINLESS STEEL		SEE NOTE 3
23	BONNET O-RING	1	RUBBER	D2000	EPDM
24	BODY	1	DUCTILE IRON	A536	GRADE
25	DISC NUT	1	BRONZE	B62	
26	ENCAPSULATED DISC	1	SEE NOTE 2		
27	GUIDE CAP	2	ACETAL		

4" RWGV BY-PASS PART LIST 210lbs (approx.)

28	BY-PASS VALVE ASSEMBLY	1			SEE NOTE 4
29	PIPE NIPPLE w/FLANGE	2	STEEL		
30	90° ELBOW - SHORT	2	STEEL		
30b	SPACER	1	STEEL		
31	FLANGE GASKET	5	RUBBER		
32	Ø 3/4" HEX BOLT (SHORT)	22	316 STAINLESS STEEL		SEE NOTE 3
32b	Ø 3/4" HEX BOLT (LONG)	6	316 STAINLESS STEEL		SEE NOTE 3
32c	Ø 3/4" THREADED STUD (LONG)	2	316 STAINLESS STEEL		SEE NOTE 3
32d	Ø 3/4" THREADED STUD (SHORT)	2	316 STAINLESS STEEL		SEE NOTE 3
33	HEX NUT 3/4"	36	316 STAINLESS STEEL		SEE NOTE 3

BEVEL GEAR PART LIST

34	BEVEL GEAR (SEE NOTE 5)	1	STEEL		
37	STEM NUT	1	BRONZE		
38	KEY .5"x3" (USED WITH SPUR/BEVEL GEARING)	1	STEEL		
39	CAP SCREW 3/4" x 1" (SPUR/BEVEL)	1	316 STAINLESS STEEL		SEE NOTE 3
40	HOLD DOWN WASHER (USE w/SPUR/BEVEL)	1	STEEL		SEE NOTE 3
40a	PIPE PLUG 3"	1	SUPPLIED WITH GEAR		

POSITION INDICATOR PART LIST

41	HOUSING SUB ASSEMBLY	1	STEEL		
42	DECAL FOR POSITION INDICATOR	1			
43	WINDOW GASKET	1			
44	INDICATING STEM 42" RWGV OL	1	BRONZE		
45	POINTER POSITION INDICATOR OL	1	BRONZE		
46	WINDOW	1	PLEXIGLAS/LEXAN		

BODY END CONFIGURATIONS

47	FLANGE x FLANGE BODY	1	DUCTILE IRON	A536	
52	PIPE PLUG	2	SUPPLIED WHEN TAPPED		

- NOTES
- BRONZE ASTM B654 ALLOY C86200
 - RUBBER ENCAPSULATED DUCTILE IRON DISC RUBBER - EPDM ASTM D2000 DUCTILE IRON ASTM A536 GRADE 65-45-12
 - BOLTS - ASTM F593 GROUP 2 NUTS - ASTM F594 GROUP 2
 - BY-PASS VALVE 4" RWGV - FLANGE ENDS BY-PASS VALVES ARE EQUIPPED WITH 2" SQUARE WRENCH NUTS OR 6" DIA HANDWHEELS OPEN LEFT OR RIGHT AS REQUIRED
 - VALVES TO BE FURNISHED WITH ONE OF THE LISTED OPERATORS BEVEL ROTORK: BF, RATIO 4:1, TURNS TO OPEN 596. SPUR ROTORK: IS7, RATIO 4:1, TURNS TO OPEN 596
 - MANUFACTURER'S OPTION TO UPGRADE MATERIAL TO DUCTILE IRON A536 GRADE 65-45-12

SR	BY	DATE	DESCRIPTION	THIRD ANGLE PROJECTION	C.D. NO.
AD	AD	06/08/17	UNLESS OTHERWISE NOTED		
CHD	BB	06/08/17	BREAK CAST CORNERS!		
END	MS	06/08/17	BREAK MACH CORNERS!		
MSR			TOLERANCES	PURCH. FINISH NO ASSY REF. NO. SCALE NONE	PART. NO.
MFG			UNLESS OTHERWISE NOTED		
TOOL			LINEAR	ANGULAR	
FDRY			±	±	STR. NO.

MAT'L	NOTED	DESCR.	NUMBER
		54" RWGV 250-PSI AWWA C515	7422

APPROVED
By Matthew Sliger at 11:24 am, Sep 14, 2017