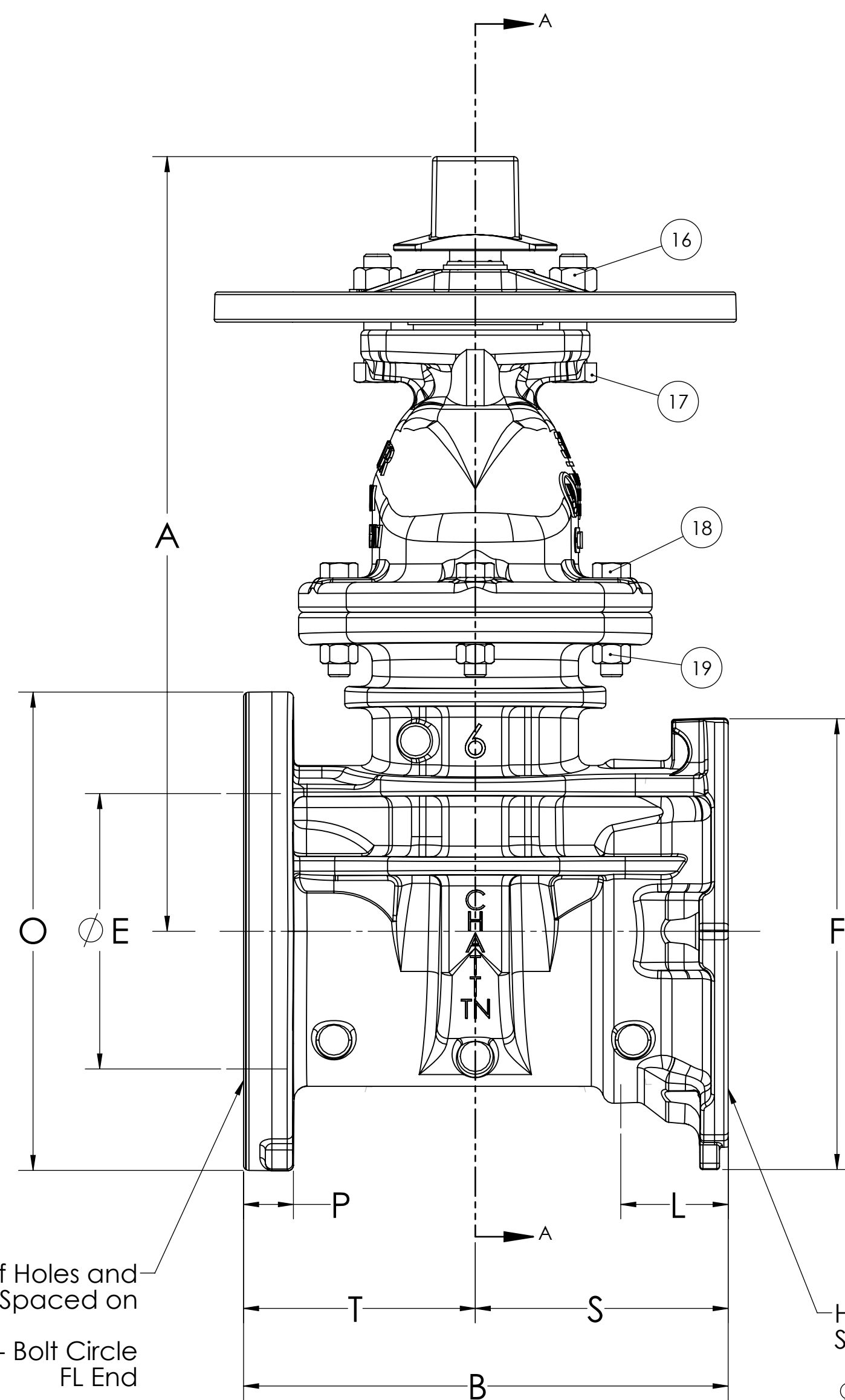
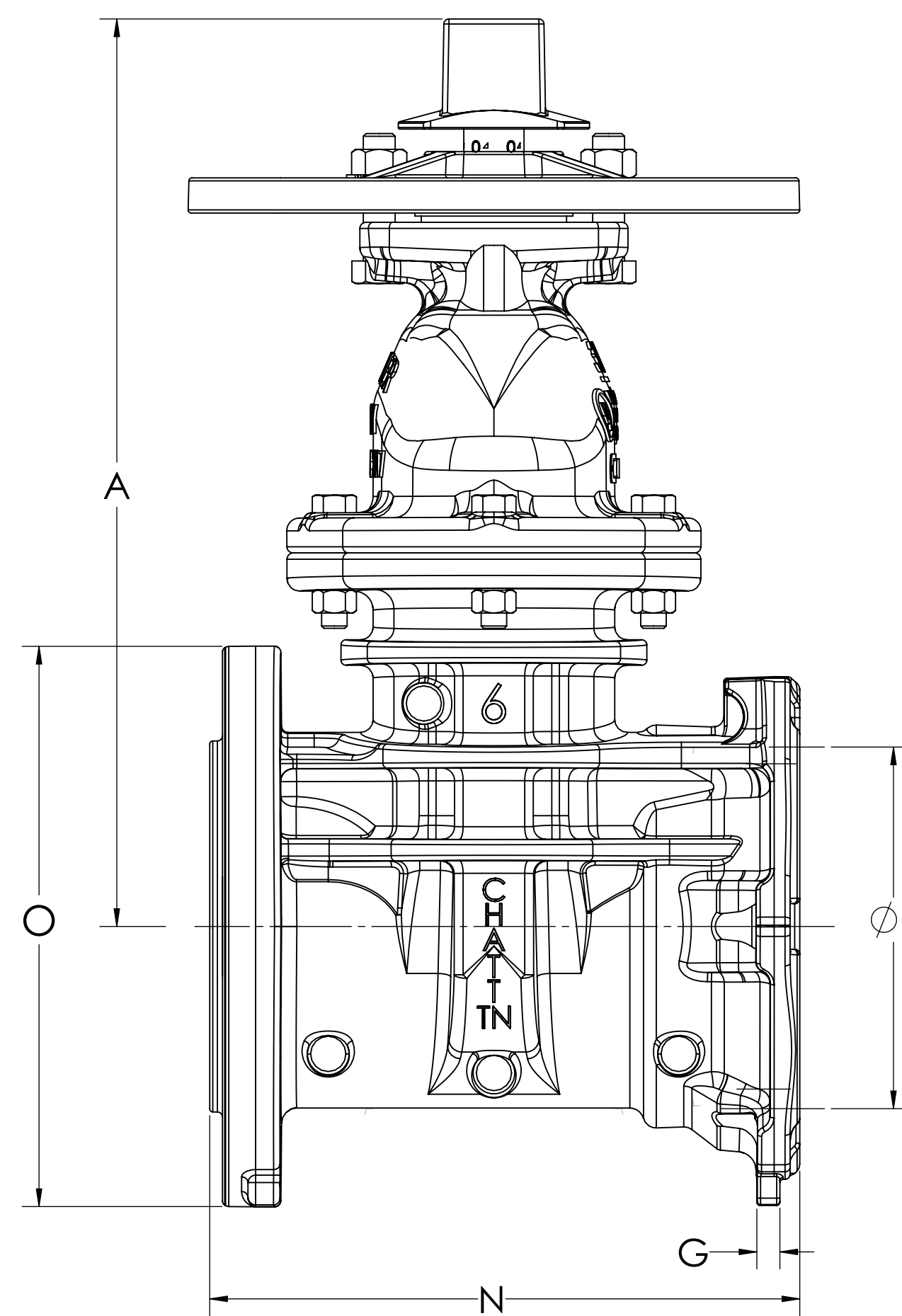


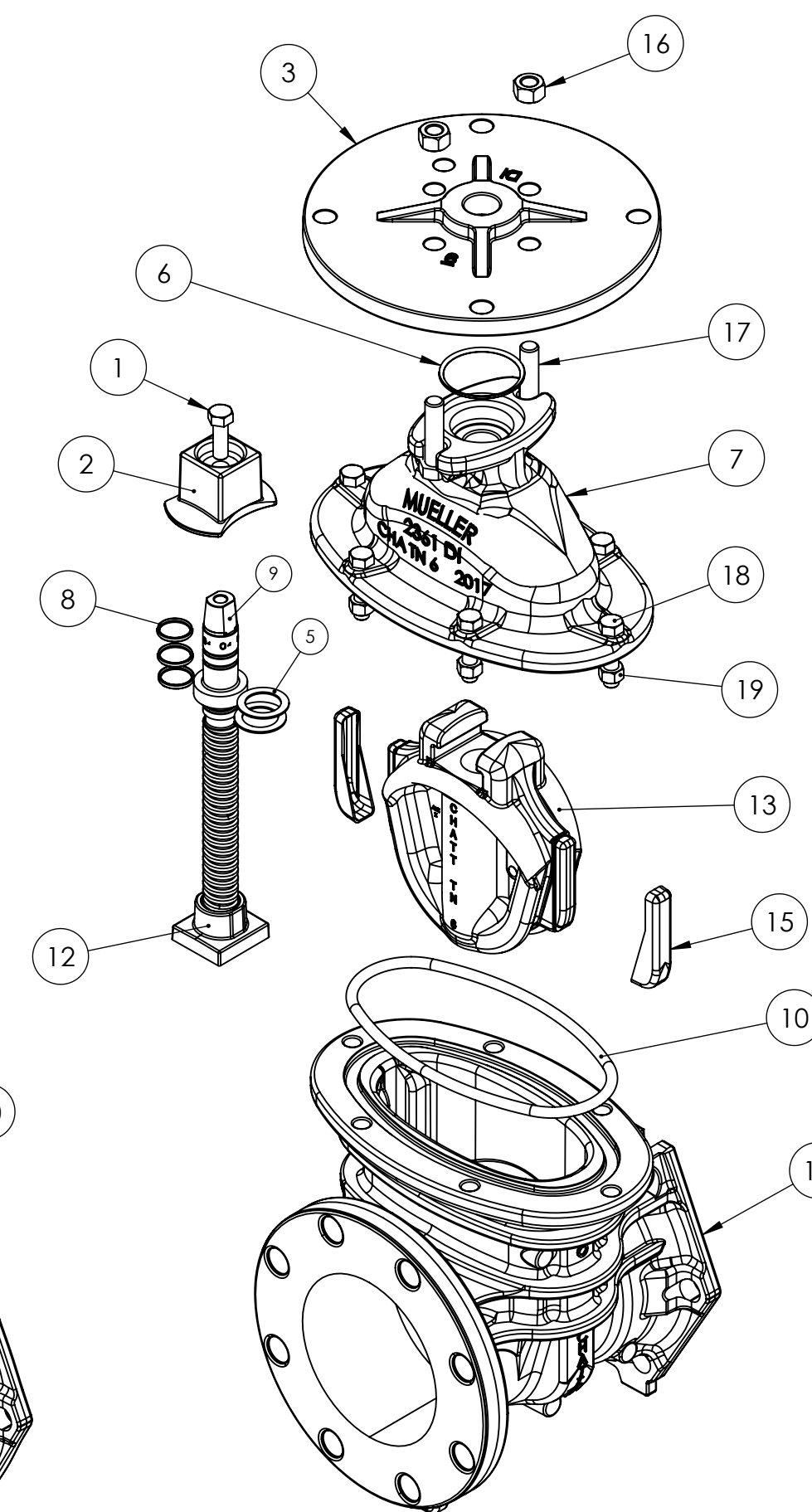
SECTION A-A - TYPICAL



FL x MJ



TAPPING - FL x MJ



ITEM NO.	DESCRIPTION	B. QTY.	MATERIAL	ASTM	NOTES
1	Cap Screw	1	316 Stainless Steel	F593	Group 2 - CW
2	Wrench Nut	1	Ductile Iron	A536	
3	PIV Stuffing Box	1	Ductile Iron	A536	
4	Wiper Ring (dirt seal)	1	Thermoplastic Polyurethane	D412/ D624 D2240/ D792	HY-52D
5	Anti-friction Washer	2	Acetal		
6	Stuffing Box O-Ring	1	Nitrile Rubber		R34
7	Bonnet	1	Ductile Iron	A536	
8	Stem O-ring	3	Nitrile Rubber		R34
9	Stem	1	Bronze	‡	See Note
10	Bonnet O-ring	1	Nitrile Rubber		R34
11	Body FL x MJ Ends	1	Ductile Iron	A536	
12	Stem Nut	1	Bronze	B584	C89833 / NSF 372
13	Encapsulated Disc	1	◆	D2000	See Note
14	Disc Casting	1	Ductile Iron	A536	
15	Guide Cap	2	Acetal		
16	Stuffing box nuts	2	316 Stainless Steel	F594	Group 2 - CW
17	Stuffing box bolts	2	316 Stainless Steel	F593	Group 2 - SH
18	Bonnet bolts	"M"	316 Stainless Steel	F593	Group 2 - SH
19	Bonnet nuts	"M"	316 Stainless Steel	F594	Group 2 - CW
20	Body FL x MJ Ends - Tapping		Ductile Iron	A536	

◆ Rubber Encapsulated Ductile Iron Disc
 Ductile Iron - ASTM A536
 Rubber Options
 1. SBR - ASTM D2000
 2. EPDM - ASTM D2000

‡ Bronze Stem Options:
 1. Manganese - ASTM B138
 • Alloy C67600
 2. Everdur - ASTM B98
 • Alloy C66100

Q - No. and Size of Holes and Slots Equally Spaced on

∅R - Bolt Circle FL End

H - No. and Size of Holes and Slots Equally Spaced on

∅J - Bolt Circle MJ End

APPROVED
 By Matthew Sliger at 2:58 pm, Nov 02, 2017

ECO# 1906541

Valve Size	A	B	C	D	∅E (Thru ∅)	F	G	H	∅J (Bolt Circle ∅)	L	M	Turns to Open	N	O	P	Q	∅R (Bolt Circle ∅)	S	T	Weight FL x MJ	Weight T FL x MJ
4	14.19	9.5	10.79	4.50	4.30	8.40	0.50	4-0.88	7.50	2.50	4	14	9.81	9.00	1.00	8-0.75	7.50	5	4.5	95	96
6	18.00	11.06	13.5	5.00	6.30	10.41	0.45	6-0.88	9.50	2.50	6	20.5	11.43	11.25	1.13	8-0.88	9.50	5.81	5.25	151	152
8	21.50	12.09	16.36	5.50	8.30	12.68	0.50	6-0.88	11.75	2.50	6	26.5	12.46	13.50	1.15	8-0.88	11.75	6.34	5.75	213	214
10	25.50	13.94	20	6.50	10.30	15.24	0.62	8-0.88	14.00	2.50	8	33	14.31	16.00	1.29	12-1.00	14.25	7.44	6.5	315	314
12	28.62	14.5	21	7.00	12.30	18.024	0.62	8-0.88	16.25	2.50	8	38.5	14.87	19.00	1.33	12-1.00	17.00	7.5	7	411	404

MUELLER CONFIDENTIAL
 TITLE TO AND OWNERSHIP OF THIS ENGINEERING DATA REMAINS IN MUELLER CO. NO USE IS TO BE MADE OF THIS DATA EXCEPT AS SPECIFICALLY AUTHORIZED BY MUELLER CO. ASSENT ON THE PART OF THE RECEIPTS TO THESE CONDITIONS IS PRESUMED.

UNLESS OTHERWISE SPECIFIED: DIMENSIONS ARE IN INCHES TOLERANCES:
 ANGULAR: ±
 TWO DECIMAL: ±
 THREE DECIMAL: ±



MATERIAL SEE TABLE
 FINISH

DRAWN	NAME	DATE
JMH	JMH	9/8/2017
CHECKED	NAME	DATE
AO	AO	
ENG APPR.	NAME	DATE
MS	MS	
MFG APPR.	NAME	DATE
Q.A.	NAME	DATE

DESCR.		SIZE		DWG. NO.		REV	
2361 RWGV 350W w/ PIV SBX		D		7430		0	
SCALE:		WEIGHT (lbs):		SEE TABLE		SHEET 1 OF 1	

DO NOT SCALE DRAWING