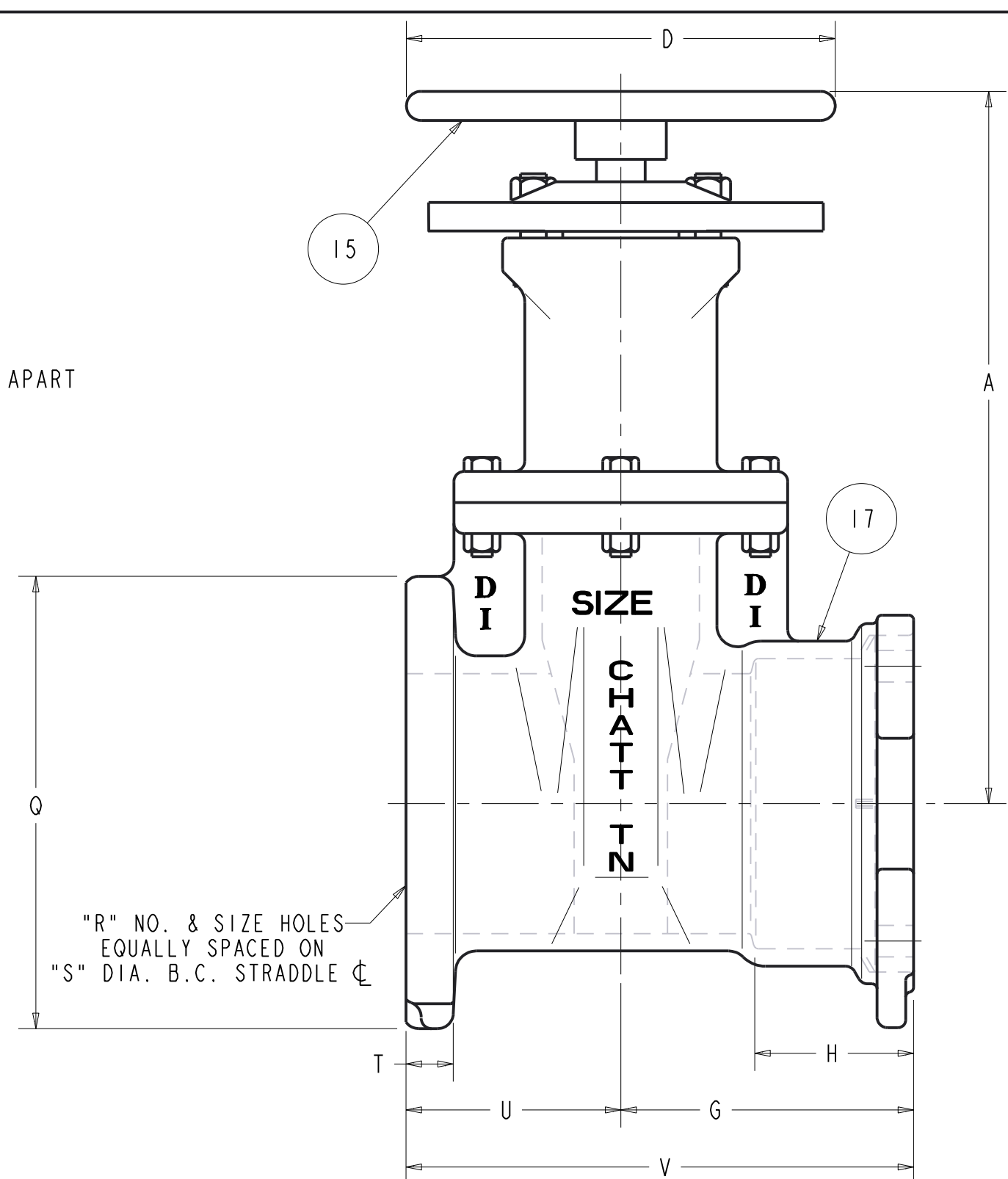


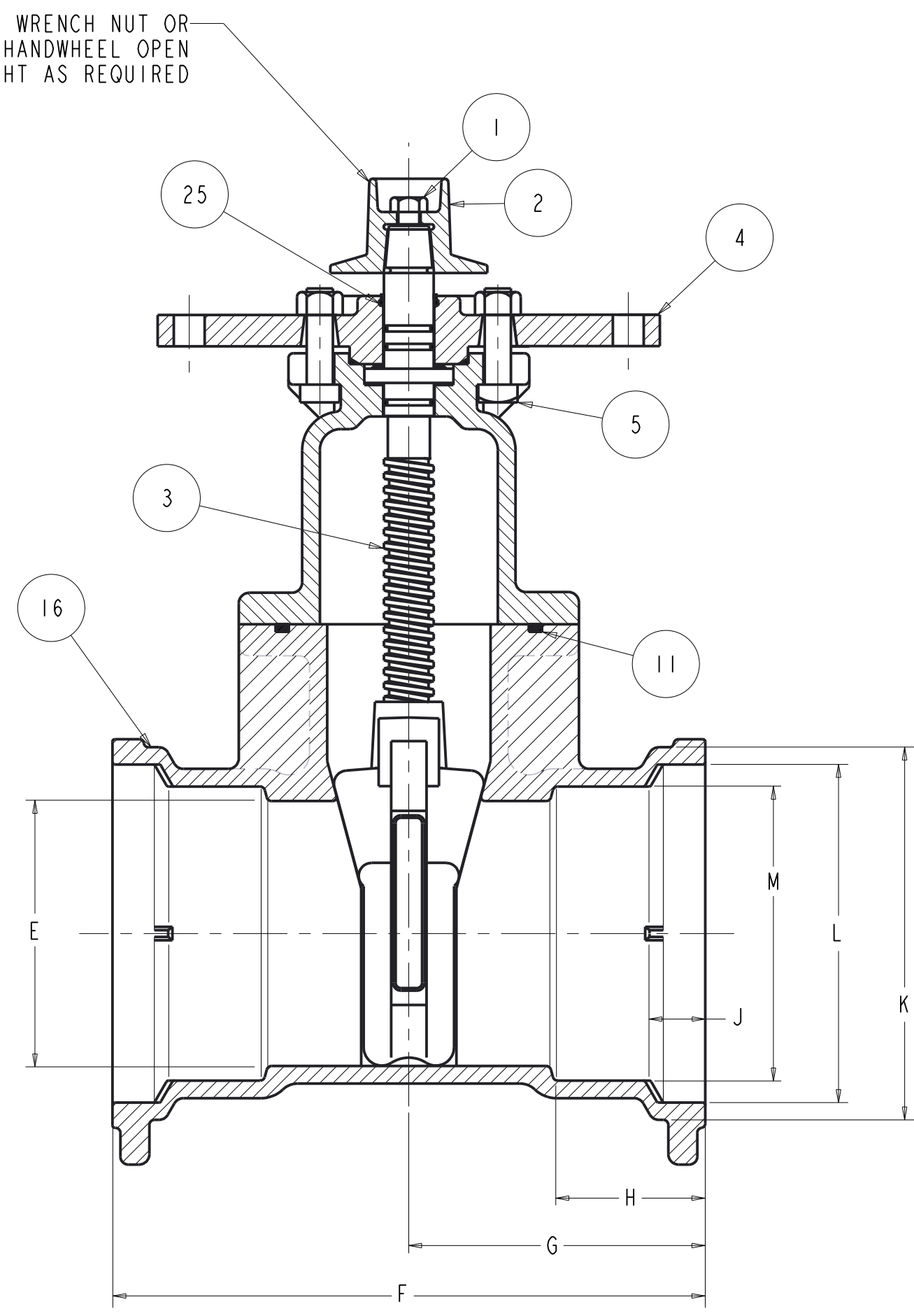
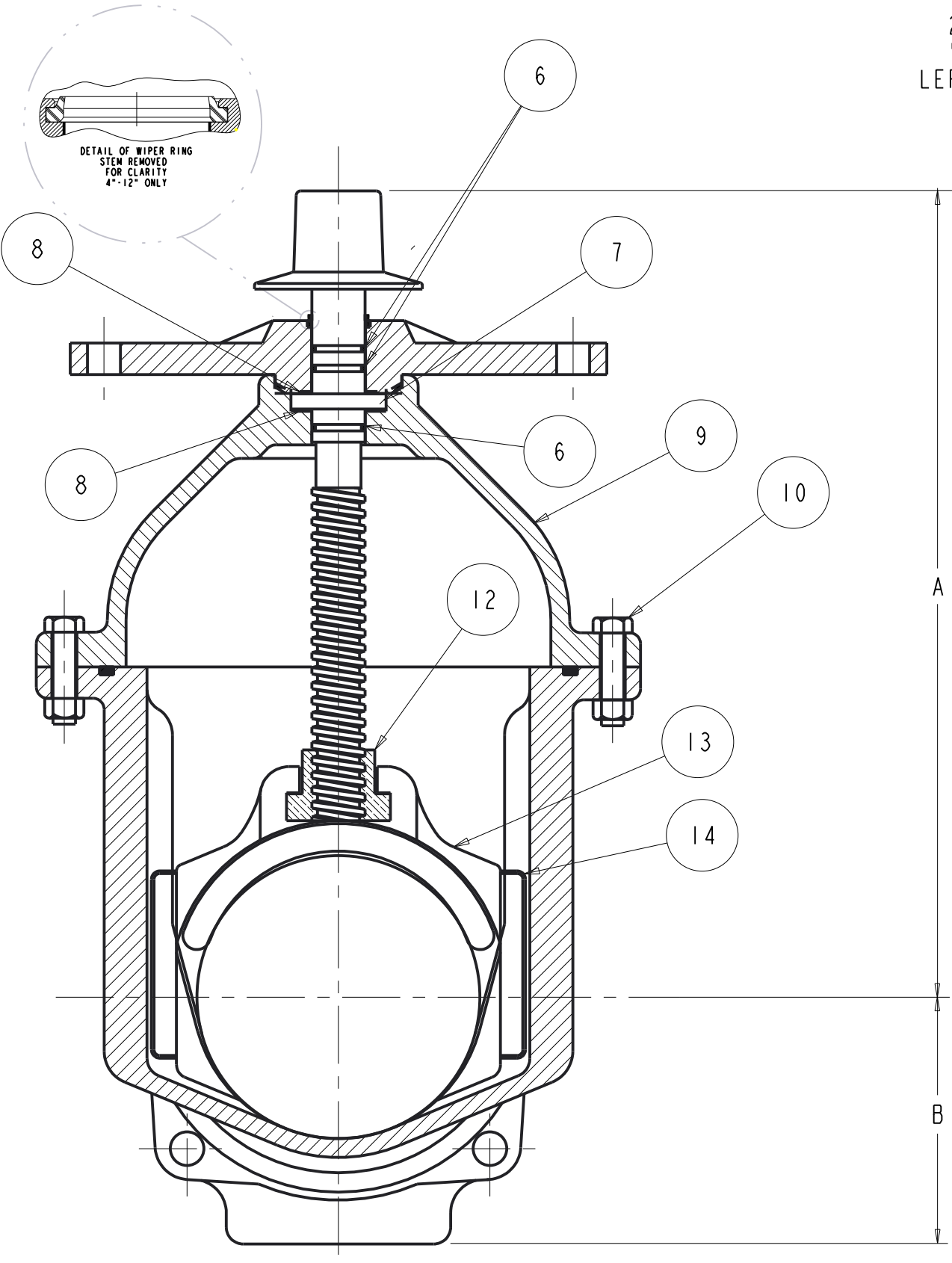
VIEW OF AQUAGRIP END FACE



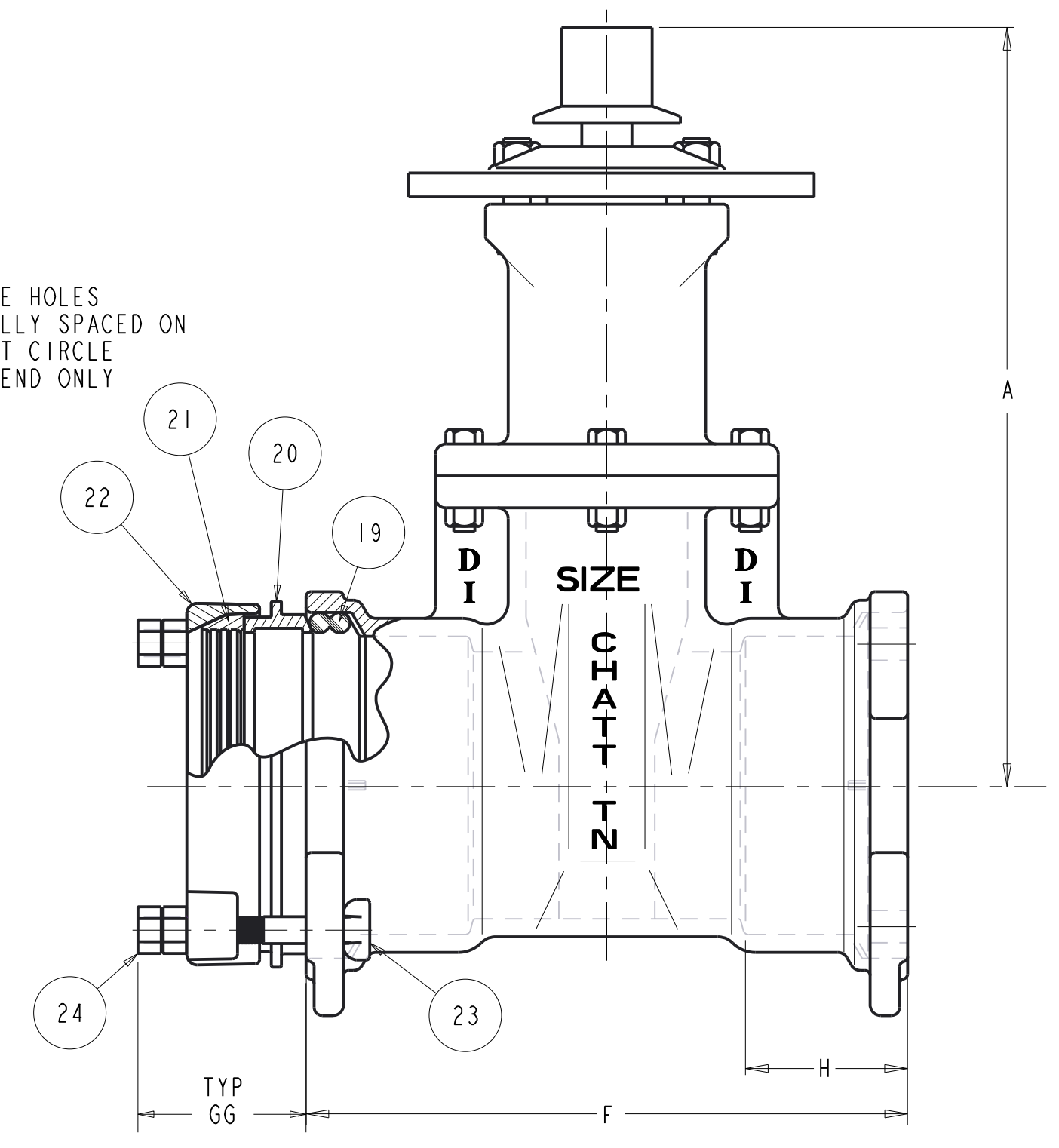
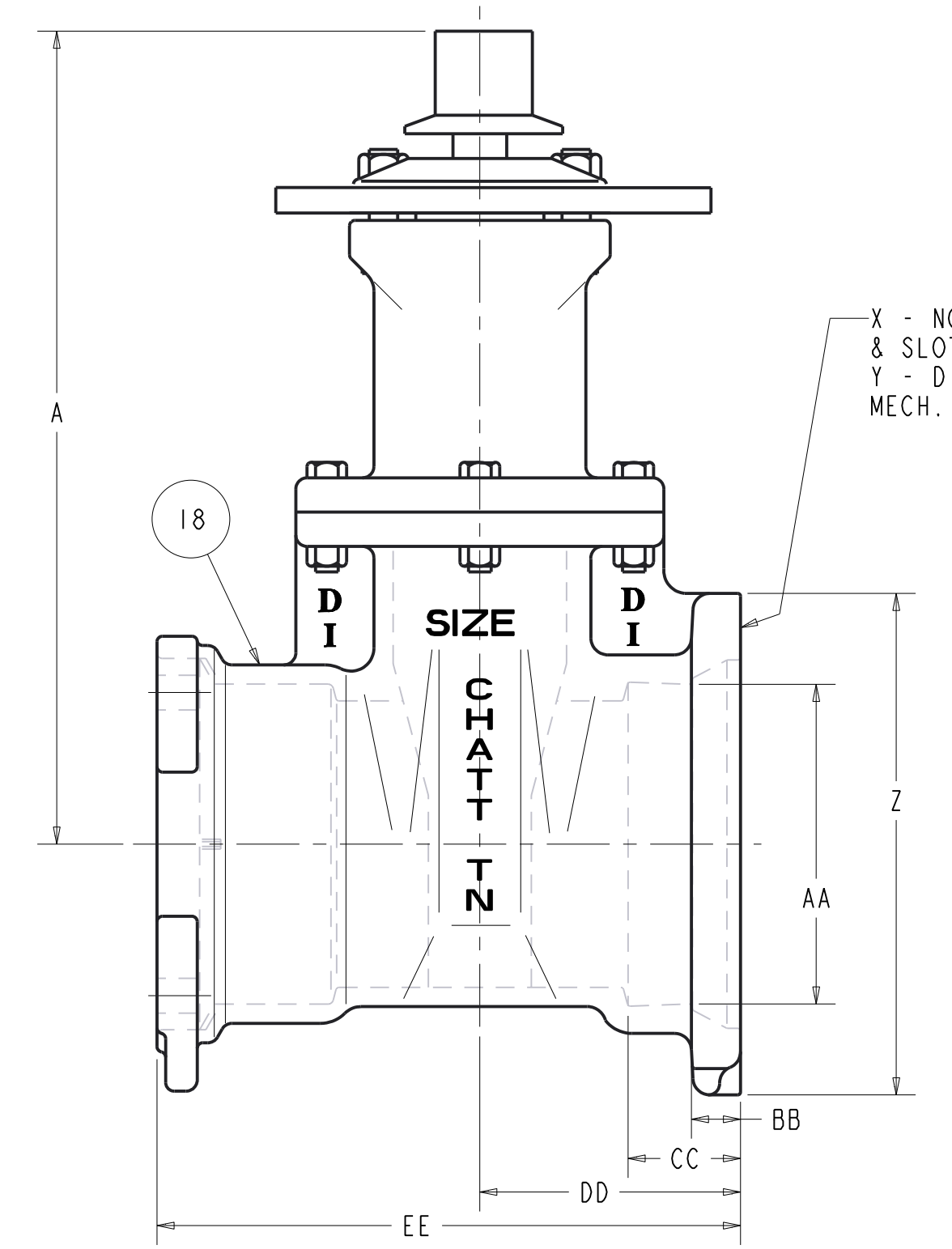
FLANGE X AQUAGRIP ENDS

		PARTS LIST			
ITEM	DESCRIPTION	REQ'D	MATERIAL	ASTM	
1	CAP SCREW	1	316 STAINLESS STEEL	F593	GROUP 2-CW
2	WRENCH NUT	1	DUCTILE IRON	A536	
3	STEM	1	BRONZE	B138	ALLOY C67600
4	STUFFING BOX	1	DUCTILE IRON	A536	
5	STUFFING BOX BOLT	2	316 STAINLESS STEEL	F593	GROUP 2-CW
	STUFFING BOX NUT		316 STAINLESS STEEL	F594	GROUP 2-CW
6	O-RING	3	RUBBER	D2000	R34
7	O-RING	1	RUBBER	D2000	R34
8	ANTI-FRICTION WASHER	2	ACETAL		
9	BONNET	1	DUCTILE IRON	A536	
10	BONNET BOLT	"W"	316 STAINLESS STEEL	F593	GROUP 2-CW
	BONNET NUT		316 STAINLESS STEEL	F594	GROUP 2-CW
11	BONNET GASKET (O-RING)	1	RUBBER	D2000	R34
12	DISC NUT	1	BRONZE	B584	
13	DISC	1	SEE NOTES 1 & 2		
14	GUIDE CAP	2	ACETAL		
15	HANDWHEEL	1	CAST IRON (SEE NOTE 2)	A126	CLASS B
16	BODY - AQUAGRIP ENDS	1	DUCTILE IRON	A536	
17	BODY - FLG. X AQUAGRIP	1	DUCTILE IRON	A536	
18	BODY - M.J. X AQUAGRIP	1	DUCTILE IRON	A536	
**19	GASKET (DOUBLE O-RING)	1	RUBBER	D2000	EPDM-R108
**20	INTERMEDIATE RING	1	DUCTILE IRON	A536	
**21	GRIPPER RING	1	DUCTILE IRON	A536	
**22	END RING	1	DUCTILE IRON	A536	
**23	T-HEAD BOLTS	"FF"	STEEL	A242	LOW ALLOY (CORTEN)
**24	BREAK-AWAY NUTS	"FF"	STEEL	A108	ZINC PLATED
25	WIPER RING	1	RUBBER	D2000	

- RUBBER ENCAPSULATED CAST IRON DISC  
DUCTILE IRON - ASTM A536 65-45 MINIMUM  
RUBBER - SBR - ASTM D2000
  - MANUFACTURER'S OPTION TO UPGRADE MAT'L TO D1 - A536 GR 65-45-12
- \*\* QUANTITY PER AQUAGRIP ASSEMBLY



MECHANICAL X AQUAGRIP ENDS



AQUAGRIP X AQUAGRIP ENDS

DIMENSIONS FOR MUELLER RESILIENT WEDGE VALVE - INCHES																																
VALVE SIZE	A	B	C	D	E	F	G	H	J	K	L	M	N	P	Q	R	S	T	U	V	W	X	Y	Z	AA	BB	CC	DD	EE	FF	GG	URNS TO OPEN
4	14.19	4.50	10.79	11.00	4.30	12.68	6.34	3.70	1.08	6.56	5.75	4.95	4 - 0.88	7.50	9.00	8 - 0.75	7.50	.94	4.50	10.84	4	4 - 0.88	7.50	9.12	4.90	1.00	2.50	5.00	11.34	4	2.75	14
6	18.00	5.50	13.50	13.00	6.30	15.12	7.56	3.70	1.28	8.81	8.05	7.12	4 - 0.88	9.75	11.00	8 - 0.88	9.50	1.06	5.25	12.81	6	6 - 0.88	9.50	11.12	7.00	1.09	2.50	5.81	13.37	4	3.75	20.5
8	21.50	6.75	16.36	14.00	8.30	16.94	8.47	3.70	1.28	10.88	10.20	9.28	6 - 0.88	11.96	13.50	8 - 0.88	11.75	1.19	5.75	14.22	6	6 - 0.88	11.75	13.37	9.15	1.18	2.50	6.34	14.81	6	3.75	26.5
10	25.50	8.00	19.99	16.00	10.30	18.04	9.02	3.89	1.47	12.92	12.29	11.31	8 - 0.88	14.00	16.00	12 - 1.00	14.25	1.25	6.50	15.53	8	8 - 0.88	14.00	15.62	11.20	1.25	2.50	7.38	16.41	8	3.75	33
12	28.62	9.50	21.00	16.00	12.30	18.90	9.45	3.89	1.47	15.14	14.40	13.40	8 - 0.88	16.25	19.00	12 - 1.00	17.00	1.31	7.00	16.45	8	8 - 0.88	16.25	17.88	13.30	1.31	2.50	7.44	16.89	8	3.75	38.5

**APPROVED**  
By Matthew Sliger at 2:42 pm, Oct 27, 2017

ECO 1931421

SR BY: AO	10/4/17	UNLESS OTHERWISE NOTED	THIRD ANGLE PROJECTION	C.D. NO.
CHNG: BB	10/4/17	BREAK CAST CORNERS!		PART. NO.
ENGR: MS	10/4/17	BREAK MACH CORNERS!		
INFO:		TOLERANCES	PURCH. NO.	FINISH ASSY
MFG:		UNLESS OTHERWISE NOTED	REF. NO.	SCALE NONE
TOOL:		LINEAR	ANGULAR	STR. NO.
FBRY:		±	±	
MAT'L: NOTED		DESCR: 4IN - 12IN RWG P2361 W/AQUAGRIP, M.J. X AQUAGRIP & FLANGE X AQUAGRIP ENDS		
NUMBER		7432		