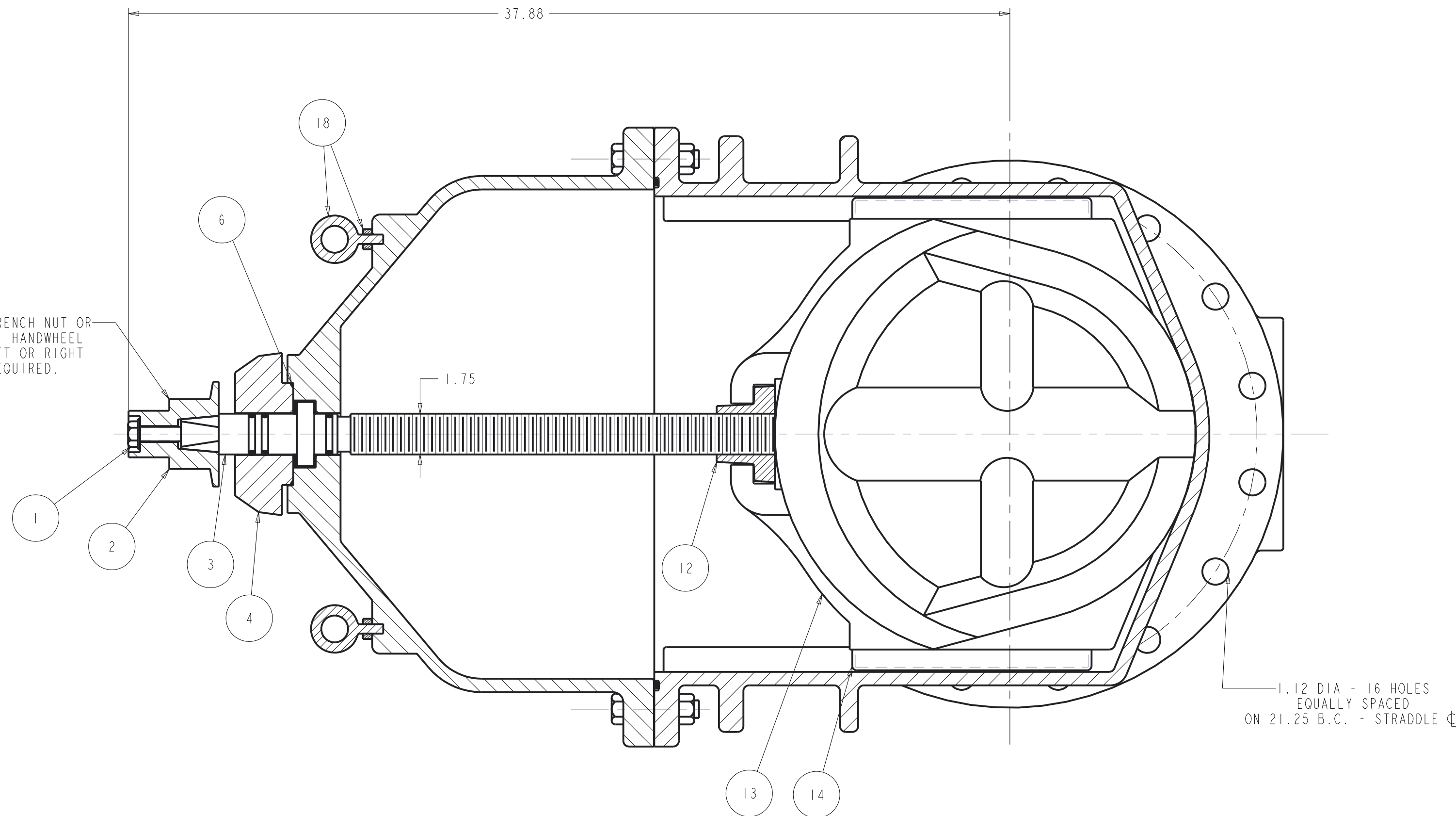
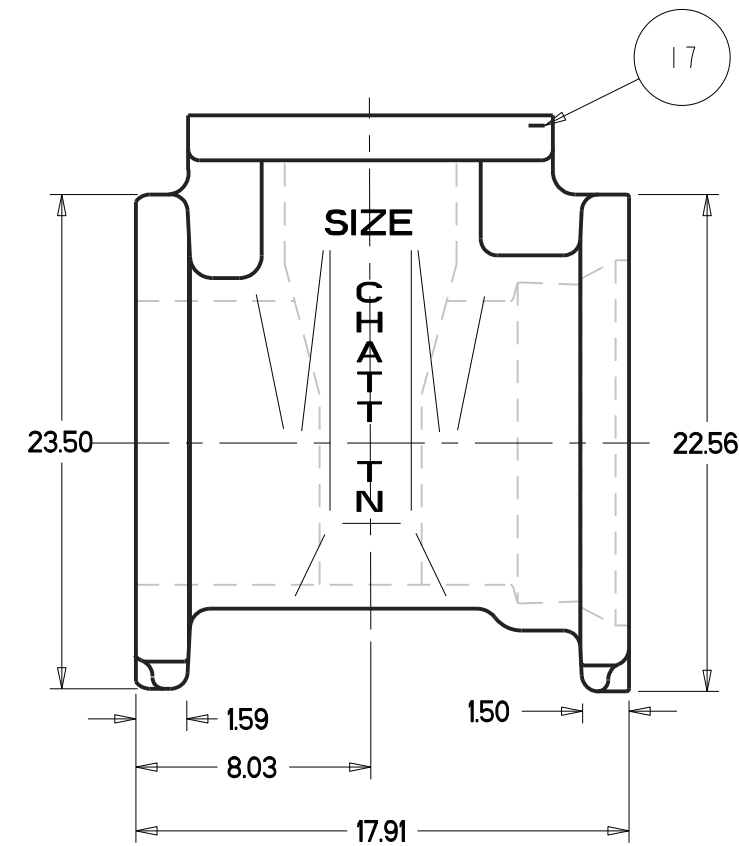


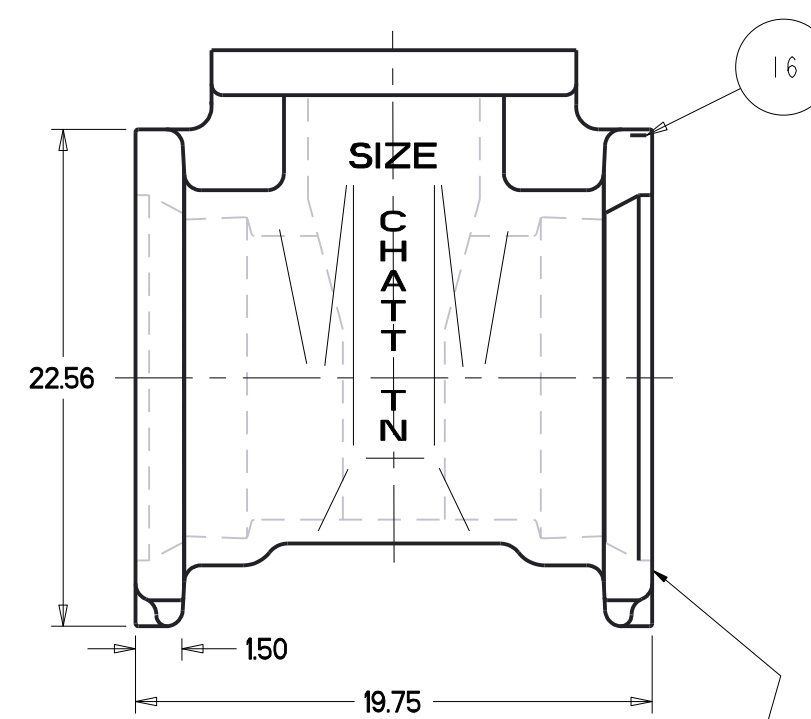
2" SQ. WRENCH NUT OR 18" DIA. HANDWHEEL OPEN LEFT OR RIGHT AS REQUIRED.



1.12 DIA - 16 HOLES EQUALLY SPACED ON 21.25 B.C. - STRADDLE

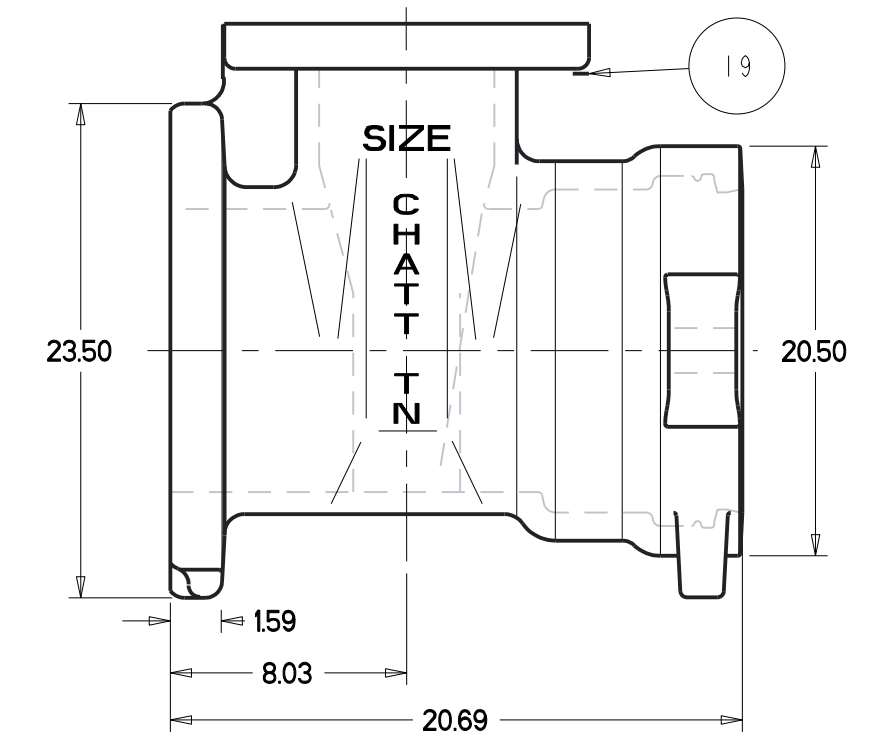
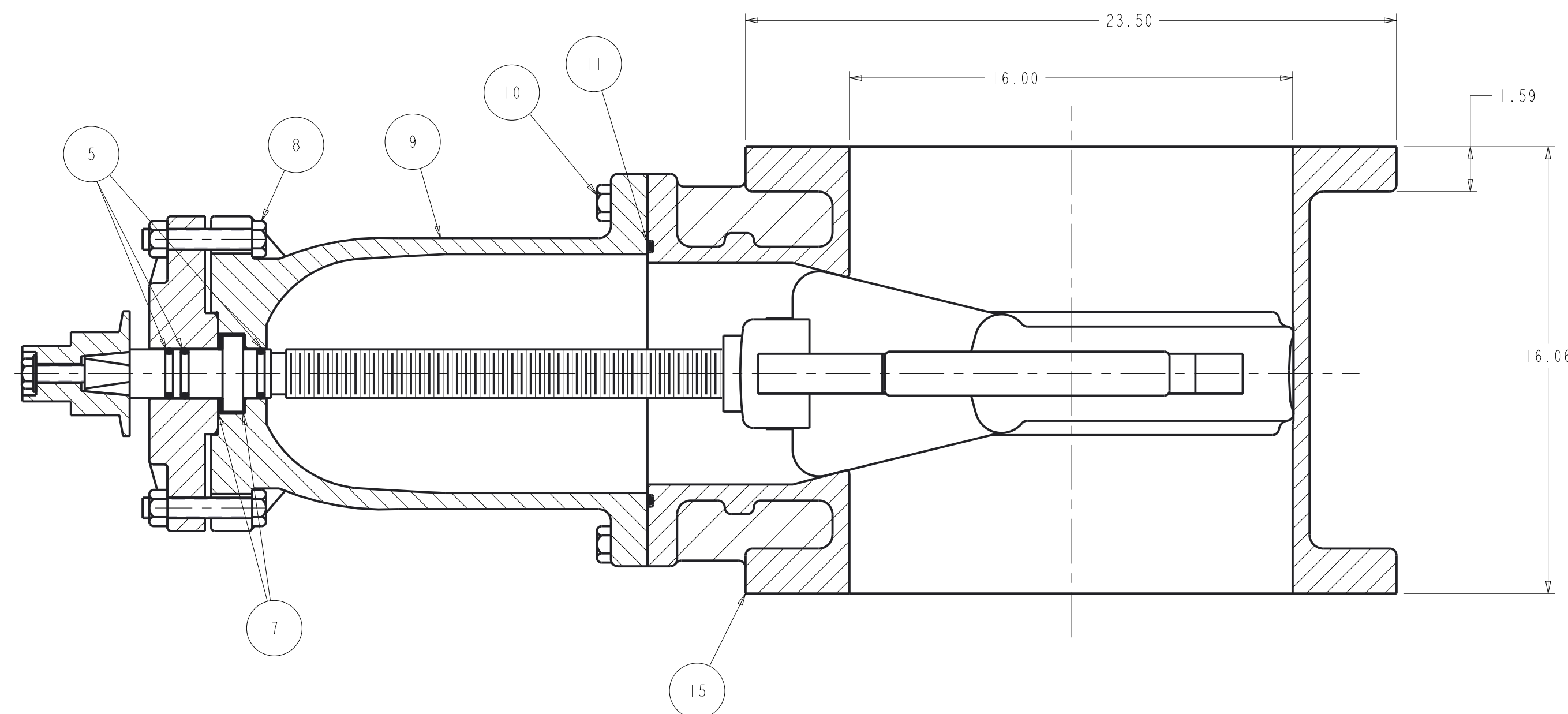


FLANGE X MECH JOINT ENDS

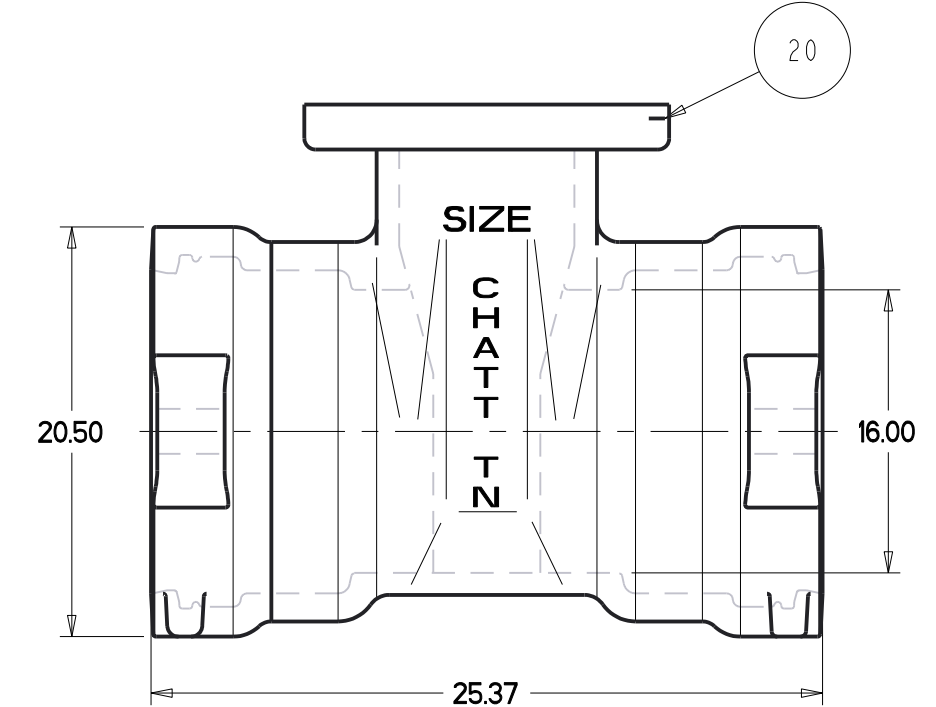


4 SLOTS & 8-.875 DIA. HOLES EQUALLY SPACED ON 21.00 B.C. - STRADDLE

MECHANICAL JOINT ENDS



FLANGE X SLIP-ON ENDS



SLIP-ON ENDS

PARTS LIST					
ITEM	DESCRIPTION	REQ'D	MATERIAL	ASTM	
1	CAP SCREW	1	316 STAINLESS STEEL	F593	GROUP 2-CW
2	WRENCH NUT	1	CAST IRON	A126	CLASS B
3	STEM	1	BRONZE	ASTM B138	ALLOY 67600
4	STUFFING BOX	1	DUCTILE IRON	A536	
5	"O" RING	3	NITRILE - RUBBER	D2000	
6	"O" RING	1	NITRILE - RUBBER	D2000	
7	ANTI-FRICTION WASHER	2	BRASS		
8	HEX BOLT HEX NUT	2	316 STAINLESS STEEL 316 STAINLESS STEEL	F593 F594	GROUP 2-CW GROUP 2-CW
9	BONNET	1	DUCTILE IRON	A536	
10	HEX BOLT HEX NUT	12	316 STAINLESS STEEL 316 STAINLESS STEEL	F593 F594	GROUP 2-CW GROUP 2-CW
11	"O" RING	1	NITRILE - RUBBER	D2000	
12	DISC NUT	1	BRONZE	B62	
13	DISC	1	SEE NOTE 1		
14	GUIDE CAP	2	ACETAL		
15	FLG x FLG BODY	1	DUCTILE IRON	A536	
16	MJ x MJ BODY	1	DUCTILE IRON	A536	
17	FLG x MJ BODY	1	DUCTILE IRON	A536	
18	EYEBOLT EYEBOLT NUT	2 2	STEEL GALVANIZED STEEL GALVANIZED		
19	FLG X SL BODY	1	DUCTILE IRON	A536	
20	SL X SL BODY	1	DUCTILE IRON	A536	

NOTES
 (1) RUBBER ENCAPSULATED DUCTILE IRON DISC
 DUCTILE IRON - ASTM A536 (65-45-MIN)
 RUBBER - SBR ASTM D2000

SR BY: AD	DATE: 07/10/17	UNLESS OTHERWISE NOTED	THIRD ANGLE PROJECTION	C.D. NO.
CHKD: BB	DATE: 07/07/17	BREAK CAST CORNERS!		PART. NO.
ENGR: MS	DATE: 07/07/17	BREAK MACH CORNERS!		
MFR:		TOLERANCES	PURCH. NO.	FINISH
MFG:		UNLESS OTHERWISE NOTED	REF. NO.	SCALE
TOOL:		LINEAR	±	ANGULAR
FDRY:		±	±	STR. NO.
MAT'L: NOTED		DESCR: 16" RWGV FLG. ENDS		NUMBER: 7451
		FLG. X M.J. ENDS, M.J. X M.J. ENDS SL. X SL. & SL. X FLG.		

APPROVED
 By Matthew Sliger at 4:35 pm, Oct 27, 2017