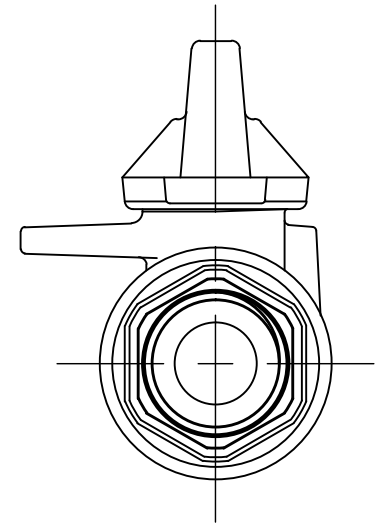
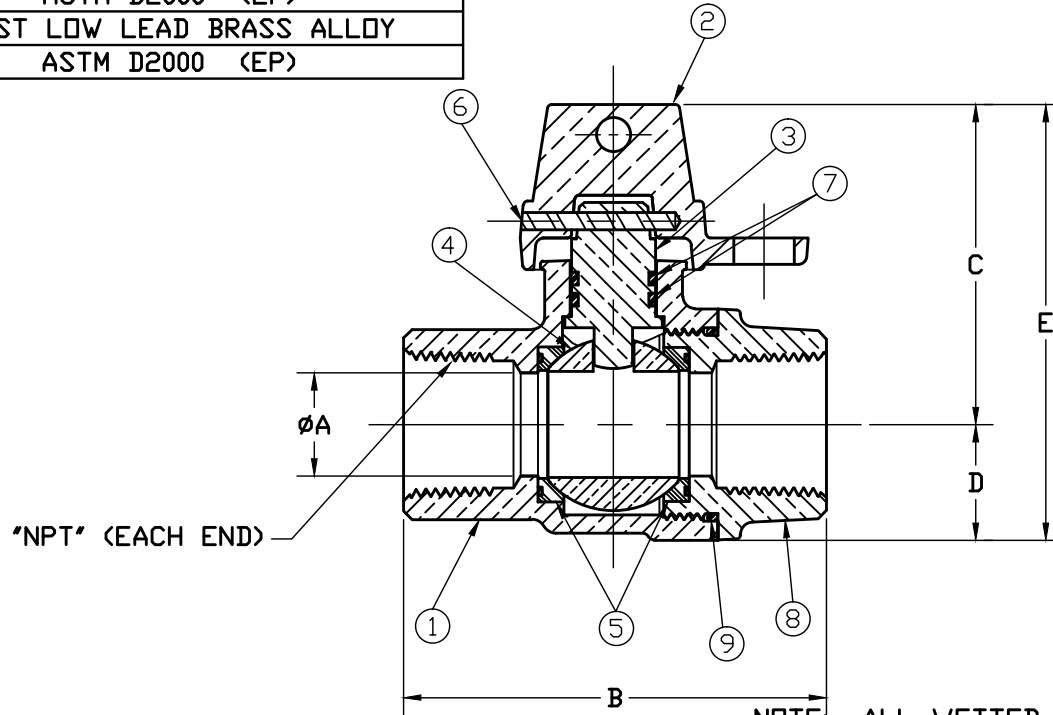


No.	DESCRIPTION	REQ'D	MATERIAL DESCRIPTION
1	BODY	1	CAST LOW LEAD BRASS ALLOY
2	CAP	1	CAST BRASS ASTM B62 ALLOY C83600
3	STEM	1	LOW LEAD BRASS ALLOY
4	BALL	1	LOW LEAD BRASS ALLOY
5	GASKET	2	ASTM D2000 (NITRILE)
6	SOLID PIN	1	AISI 304 ANNEALED STAINLESS STEEL
7	O-RING	2	ASTM D2000 (EP)
8	END PIECE	1	CAST LOW LEAD BRASS ALLOY
9	O-RING	1	ASTM D2000 (EP)

VALVE SIZE	A	B	C	D	E
3/4"	.75	3.06	2.32	.84	3.16
1"	1.00	3.84	2.62	1.15	3.77
1 x 3/4"	.75	3.28	2.32	.84	3.16
1-1/4"	1.50	4.31	3.36	1.50	4.86
1-1/2"	1.50	3.95	3.36	1.50	4.86
2"	2.00	4.96	3.91	1.82	5.73



NOTE! ALL WETTED PARTS ARE LOW LEAD BRASS ALLOY

FILEPATH: PROD-ENG\MUELLER\APPROVED\B20200N

DRFTR	Garvin	2/8/08	Mueller Co.	UNLESS OTHERWISE NOTED SURFACE PREPARATION: BREAK CORNER(S) ---- .000 SURFACE FINISH -- XX RMS TOLERANCE(S): LINEAR ----- ± .000 ANGULAR ----- ± 0°00	THIRD ANGLE PROJECTION REF. No. SCALE FULL	
CHKR						
ENGR						
MGR						
BY	DATE		STK No:			
			MAT'L:			
REV	ECR	DESCRIPTION	DATE	BY	CHKR	
DESCR. LOW LEAD INLINE BALL METER VALVE (FIP x FIP)						PART NUMBER B20200N
PER EST NO: XXXX EST FIN WT = 0.0000 lbs						

PART NUMBER B20200N
 WAS EXP NO: 442-MRKTG