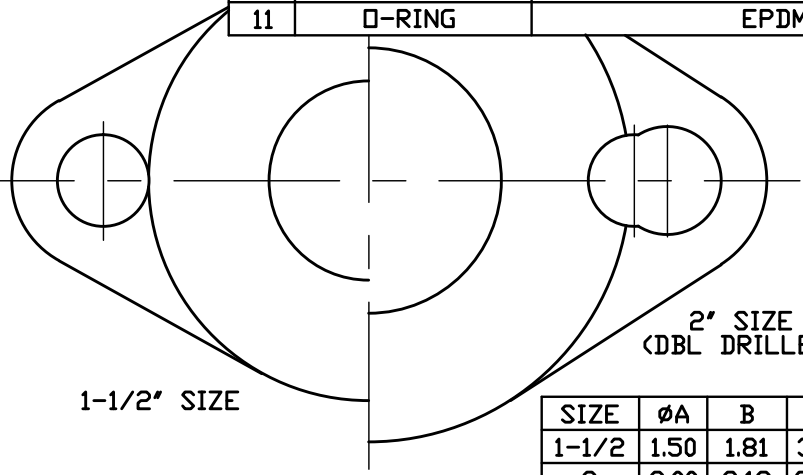


No.	DESCRIPTION	MATERIAL
1	STEM	LOW LEAD BRASS ALLOY
2	O-RING	EPDM D2000
3	BALL	LOW LEAD BRASS ALLOY
4	GASKET - SEAL	NITRILE D2000
5	BODY	CAST LOW LEAD BRASS ALLOY
6	CAP	CAST BRASS ASTM B62 ALLOY C83600
7	SEALING PLUG	CAST LOW LEAD BRASS ALLOY
8	ROLLPIN	STAINLESS STEEL ASTM A240 TYPE 302
9	CONN. NUT	CAST BRASS ASTM B62 ALLOY C83600
10	CTS GSKT SUB	SBR D2000 - GSKT 410ss - BAND
11	O-RING	EPDM D2000



SIZE	ØA	B	C	D	E
1-1/2	1.50	1.81	3.00	3.53	6.53
2	2.00	2.19	3.78	4.22	8.00

NOTE: ALL WETTED PARTS ARE LOW LEAD BRASS ALLOY

PART NUMBER
B24276N
442-MRKTG

FILEPATH: PROD-ENG\MUELLER\ASYSUBMITTALS\B24276N

DRFTR	JGarvin	9/17/09	Mueller Co.		
CHKR					
ENGR					
MGR			UNLESS OTHERWISE NOTED THIRD ANGLE PROJECTION		
			SURFACE PREPARATION:		
			BREAK CORNER(S) ---- .000		
			SURFACE FINISH -- XX RMS		
			TOLERANCE(S):		
			LINEAR ----- ± .000		
			ANGULAR ----- ± 0'00'		
			REF. No.	SCALE	
				NONE	
			STK No:		
			MAT'L:		
			DESCR.		
REV	ECR	DESCRIPTION	DATE	BY	CHKR
PER EST NO: DXXXX EST FIN WT = 0.0000 lbs					
				PART NUMBER	
				B24276N	

MUELLER BALL ANGLE METER VALVE
LOW LEAD BRASS (110CTS x METER)