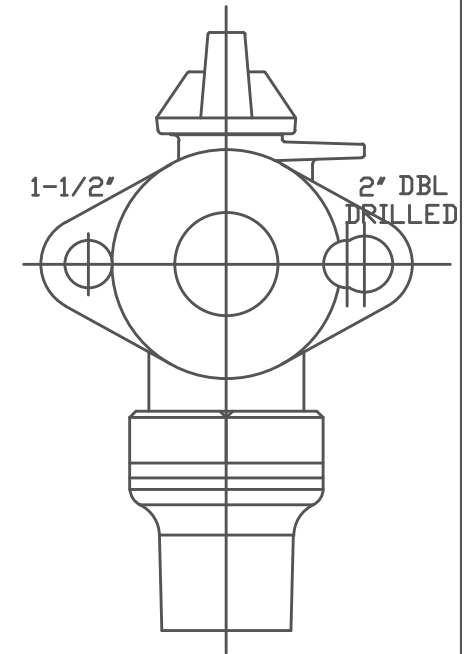
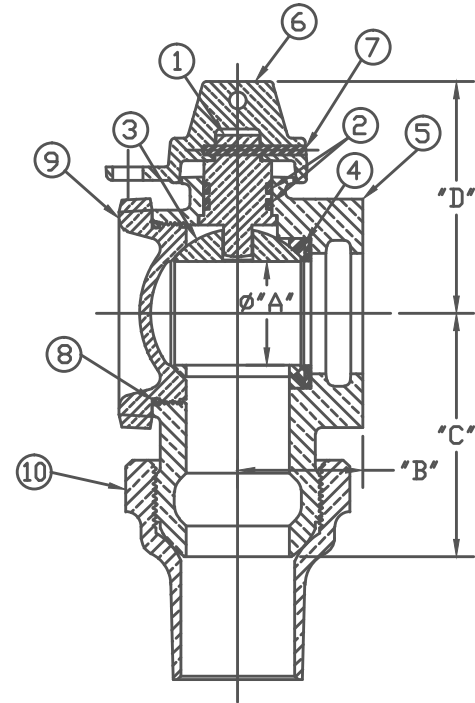


| No. | DESCRIPTION | MATERIAL |
|-----|--------------|-----------------------------------|
| 1 | STEM | LOW LEAD BRASS ALLOY |
| 2 | O-RING | EPDM ASTM D2000 |
| 3 | BALL | LOW LEAD BRASS ALLOY |
| 4 | GASKET-SEAL | NITRILE ASTM D2000 |
| 5 | BODY | CAST LOW LEAD BRASS ALLOY |
| 6 | CAP | CAST BRASS ASTM B62 ALLOY C83600 |
| 7 | SOLID PIN | AISI 304 ANNEALED STAINLESS STEEL |
| 8 | ORING | EPDM ASTM D2000 |
| 9 | SEALING PLUG | CAST LOW LEAD BRASS ALLOY |
| 10 | TUBE NUT | CAST BRASS ASTM B62 ALLOY C83600 |



| SIZE | ØA | B | C | D |
|--------|------|------|------|------|
| 1-1/2" | 1.50 | 1.81 | 3.53 | 3.36 |
| 2" | 2.00 | 2.19 | 4.34 | 4.06 |

NOTE: ALL WETTED PARTS ARE LOW LEAD BRASS ALLOY

FILEPATH: PROD-ENG\MUELLER\ASYSUBMITTALS\B24277N

| | | | | | | |
|--|--------|-------------|--------------------|--|---|------------------------|
| DRFTR | Garvin | 1/5/12 | Mueller Co. | UNLESS OTHERWISE NOTED SURFACE PREPARATION: BREAK CORNER(S) ---- .000 SURFACE FINISH -- XX RMS TOLERANCE(S): LINEAR ----- ± .000 ANGULAR ----- ± 0°00' | THIRD ANGLE PROJECTION REF. No. SCALE PLOT NONE HALF PLOT | |
| CHKR | | | | | | |
| ENGR | | | | | | |
| MGR | | | | | | |
| BY | | | DATE | STK No: | | |
| MAT'L: | | | | DESCR. | | |
| REV | ECR | DESCRIPTION | DATE | BY | CHKR | PART NUMBER B24277N |
| PER EST NO: XXXXX EST FIN WT = 0.0000 lbs | | | | | BALL ANGLE METER VALVE LOW LEAD BRASS ('C' x METER) | |

PART NUMBER
B24277N
442-MRKTG