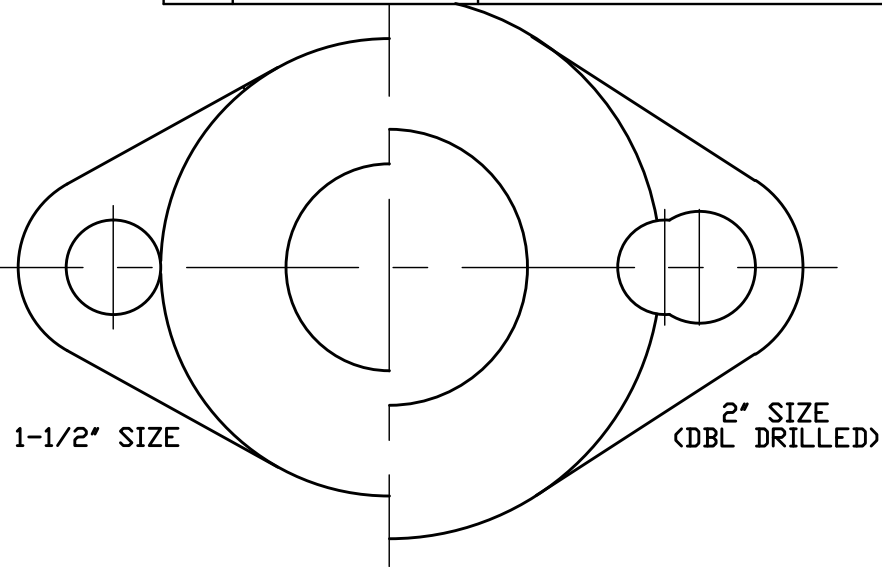
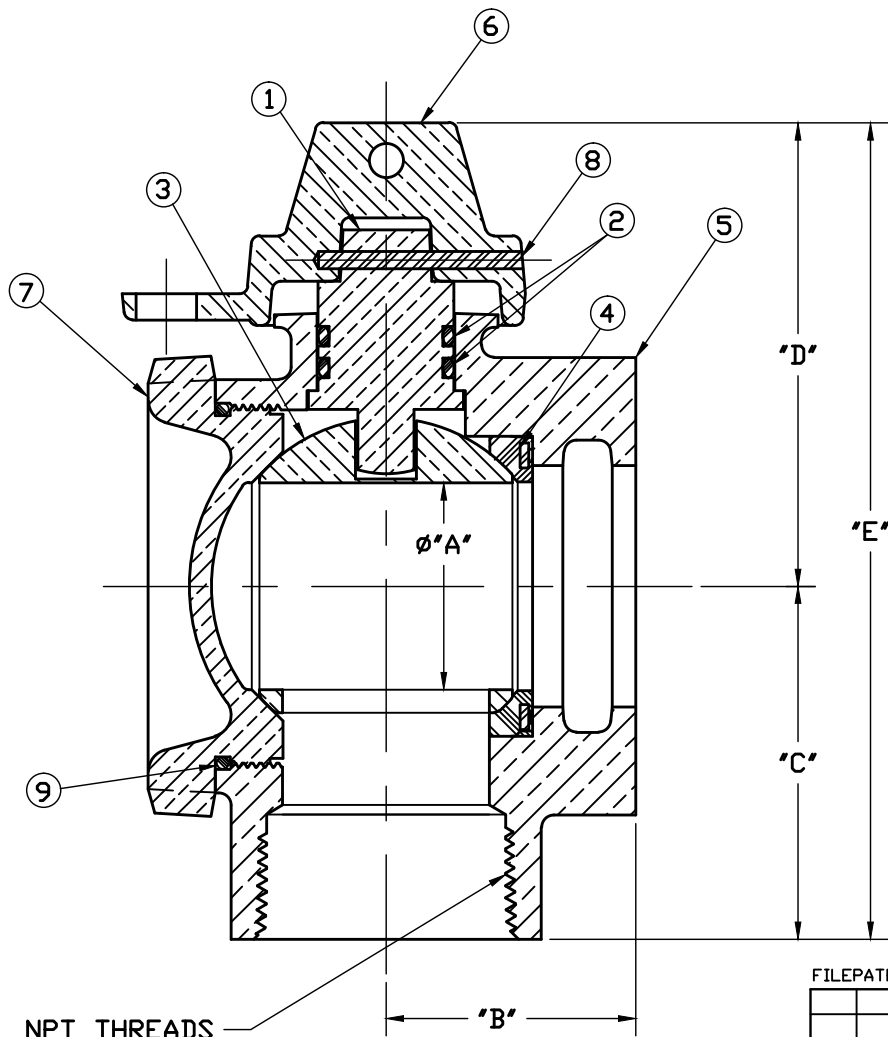


No.	DESCRIPTION	MATERIAL
1	STEM	LOW LEAD BRASS ALLOY
2	O-RING	EPDM D2000
3	BALL	LOW LEAD BRASS ALLOY
4	GASKET - SEAL	NITRILE D2000
5	BODY	CAST LOW LEAD BRASS ALLOY
6	CAP	CAST BRASS ASTM B62 ALLOY C83600
7	SEALING PLUG	CAST LOW LEAD BRASS ALLOY
8	ROLLPIN	STAINLESS STEEL ASTM A240 TYPE 302
9	O-RING	EPDM D2000



NOTE: ALL WETTED PARTS ARE LOW LEAD BRASS ALLOY

FILEPATH: PROD-ENG\MUELLER\ASYSUBMITTALS\B24286N

DRF TRJ Garvin	12/21/09	Mueller Co.	UNLESS OTHERWISE NOTED SURFACE PREPARATION: BREAK CORNER(S) ---- .000 SURFACE FINISH -- XX RMS TOLERANCE(S): LINEAR ----- ± .000 ANGULAR ----- ± 0°00'	THIRD ANGLE PROJECTION	
CHKR				REF. No.	SCALE
ENGR					
MGR				REF. No.	SCALE
BY	DATE	STK No:			
		MAT'L:			
REV	ECR	DESCRIPTION	DATE	BY	CHKR
DESCR. ANGLE METER BALL VALVE LOW LEAD BRASS (FIP x METER)					
PART NUMBER B24286N					

SIZE	øA	B	C	D	E
1-1/2	1.500	1.812	2.562	3.532	6.094
2	2.000	2.188	2.875	4.225	7.100

NPT THREADS

PART NUMBER
B24286N
442-MRKTG

PER EST NO: DXXXX EST FIN WT = 0.0000 lbs