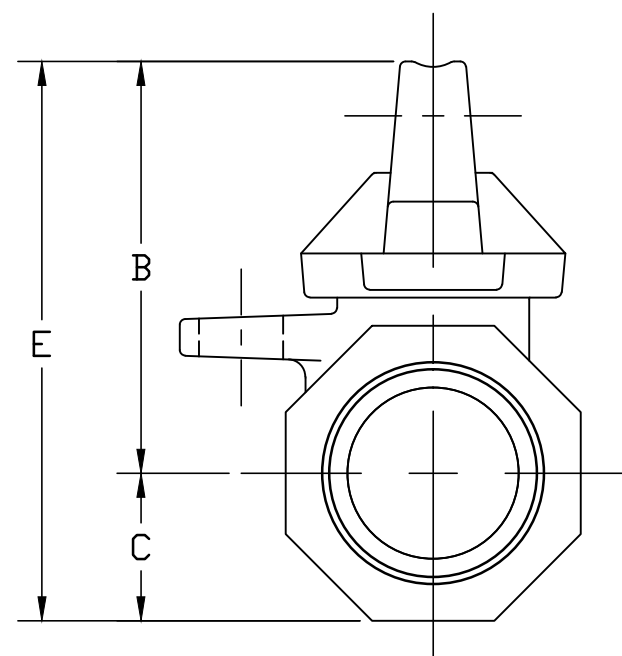
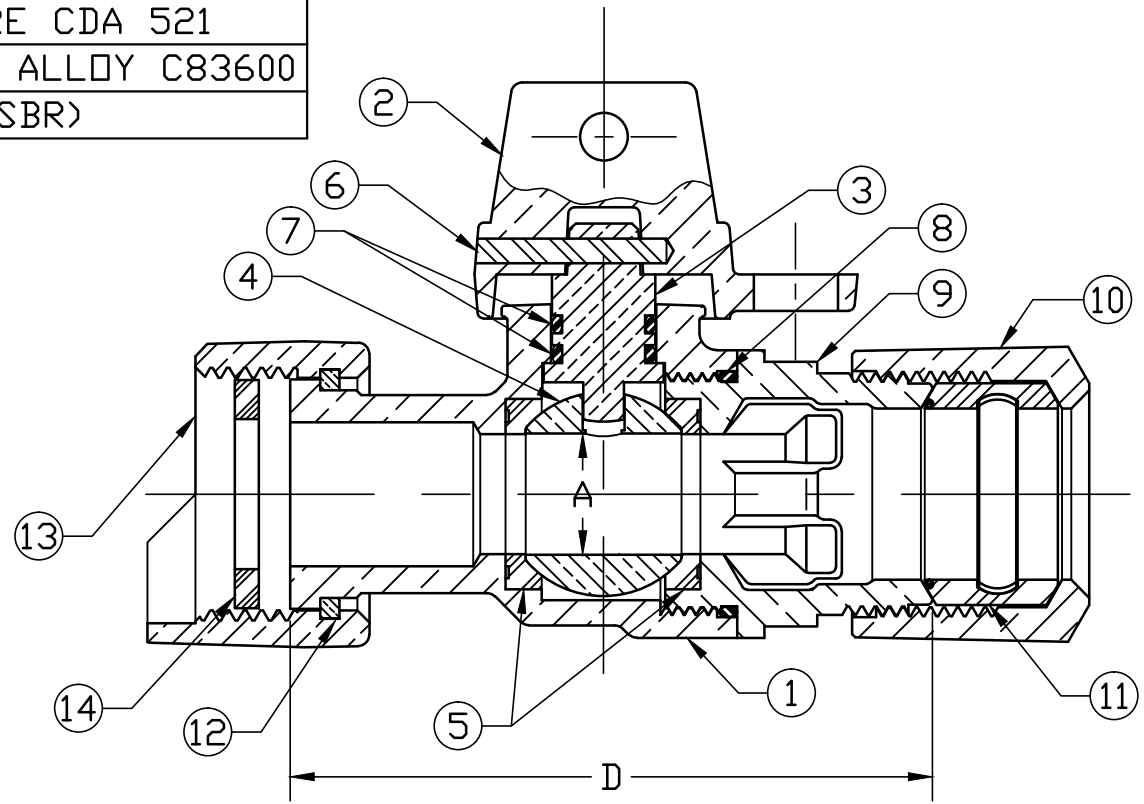


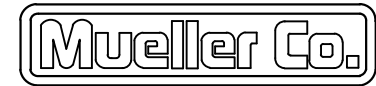
| ITEM | DESCRIPTION | MATERIAL DESCRIPTION |
|------|-------------|----------------------------------|
| 1 | BODY | CAST LOW LEAD BRASS ALLOY |
| 2 | CAP | CAST BRASS ASTM B62 ALLOY C83600 |
| 3 | STEM | LOW LEAD BRASS ALLOY |
| 4 | BALL | LOW LEAD BRASS ALLOY |
| 5 | GASKET | ASTM D2000 (BUNA-N) |
| 6 | SPIRODL PIN | AISI 303 STAINLESS STEEL |
| 7 | O-RING | ASTM D2000 (EP) |
| 8 | O-RING | ASTM D2000 (EP) |
| 9 | END PIECE | CAST LOW LEAD BRASS ALLOY |
| 10 | CONNX NUT | CAST BRASS ASTM B62 ALLOY C83600 |
| 11 | GASKET | ASTM D2000 (SBR) |
| 12 | SNAP RING | COPPER ALLOY WIRE CDA 521 |
| 13 | SADDLE NUT | CAST BRASS ASTM B62 ALLOY C83600 |
| 14 | RUBBER GSKT | ASTM D2000 (SBR) |

| SIZE | A | B | C | D | E |
|-----------|------|------|------|------|------|
| 3/4x5/8R | .62 | 2.12 | .75 | 3.41 | 2.87 |
| 3/4 R | .62 | 2.12 | .75 | 3.35 | 2.87 |
| 5/8x3/4x1 | .75 | 2.31 | .84 | 3.68 | 3.15 |
| 3/4 | .75 | 2.31 | .84 | 3.21 | 3.15 |
| 1 R | .75 | 2.32 | .84 | 3.57 | 2.32 |
| 1 | 1.00 | 2.62 | 1.15 | 4.71 | 3.78 |



FILEPATH: PROD-ENG\MUELLER\ASYSUBMITTALS\B24350N

| | | |
|-------------------|--|-------------|
| DRFTR | RWB | 5/21/13 |
| CHKR | | |
| ENGR | | |
| MGR | | |
| BY | DATE | |
| STK No: | | |
| MAT'L: | | |
| DESCR. | INLINE BALL LLB METER VALVE (MTR x 110 CTS) | |
| REV | ECR | DESCRIPTION |
| DATE | BY | CHKR |
| PER EST NO: DXXXX | EST FIN WT = 0.0000 lbs | |



UNLESS OTHERWISE NOTED THIRD ANGLE PROJECTION
 SURFACE PREPARATION:
 BREAK CORNER(S) ---- .000
 SURFACE FINISH -- XX RMS
 TOLERANCE(S):
 LINEAR ----- ± .000
 ANGULAR ----- ± 0°00'

REF. No. SCALE
 NONE

DWG NUMBER
 B24350N
 442-MRKTG

ALL WETTED PARTS ARE LOW LEAD BRASS ALLOY

TITLE TO AND OWNERSHIP OF THIS ENGINEERING DATA REMAINS IN Mueller Co. NO USE IS TO BE MADE OF THIS DATA EXCEPT AS SPECIFICALLY AUTHORIZED BY Mueller Co. ASSENT ON THE PART OF THE RECIPIENT TO THESE CONDITIONS IS PRESUMED

DWG NUMBER
 B24350N