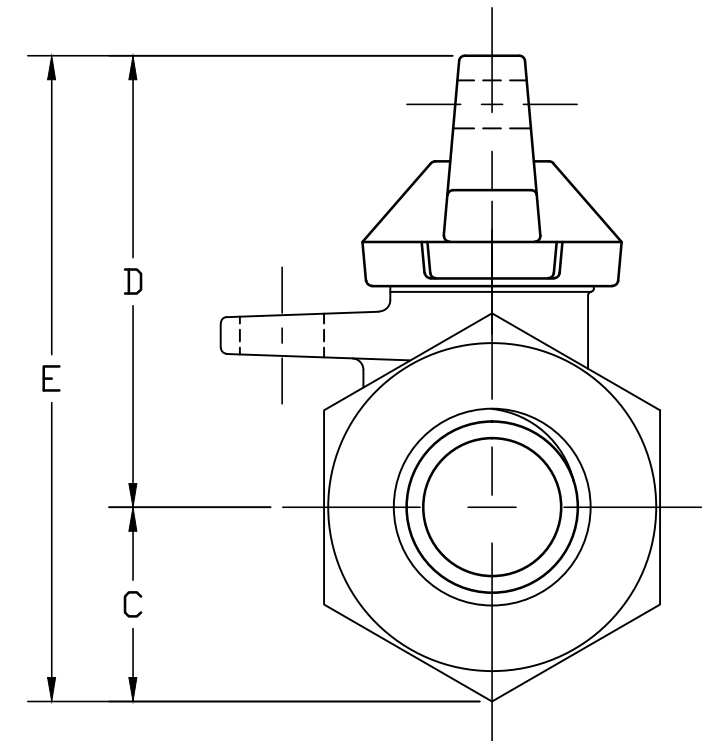
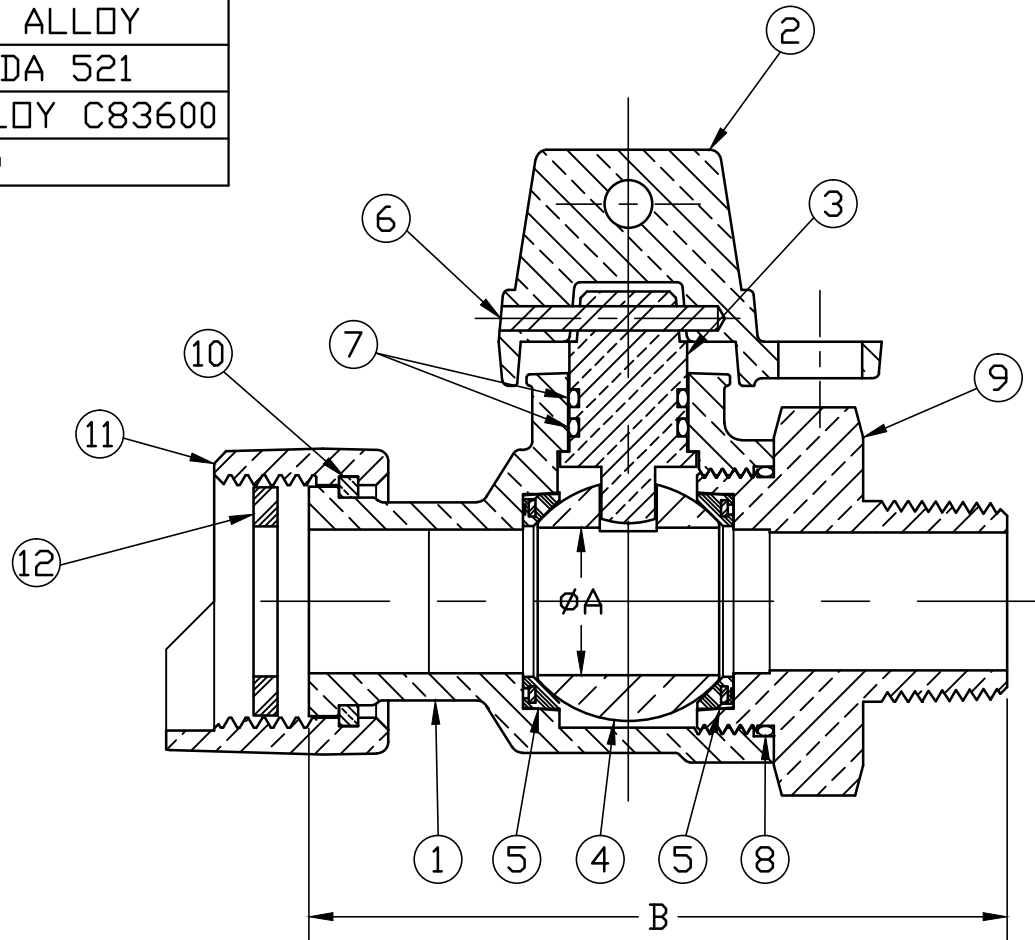


ITEM	DESCRIPTION	MATERIAL DESCRIPTION
1	BODY	CAST LOW LEAD BRASS ALLOY
2	CAP	CAST BRASS ASTM B62 ALLOY C83600
3	STEM	LOW LEAD BRASS ALLOY
4	BALL	LOW LEAD BRASS ALLOY
5	GASKET	ASTM D2000 (BUNA-N)
6	SOLID PIN	AISI 303 STAINLESS STEEL
7	O-RING	ASTM D2000 (EP)
8	O-RING	ASTM D2000 (EP)
9	END PIECE	CAST LOW LEAD BRASS ALLOY
10	SNAP RING	COPPER ALLOY WIRE CDA 521
11	SADDLE NUT	CAST BRASS ASTM B62 ALLOY C83600
12	RUBBER GSKT	ASTM D2000 (SBR)

SIZE	A	B	C	D	E
3/4"	.750	3.637	1.010	2.353	3.363
1"	1.000	4.588	1.150	2.617	3.767



FILEPATH: PROD-ENG\MUELLER\ASYSUBMITTALS\B24394N

DRFTR	RWB	5/19/17	Mueller Co.		
CHKR					
ENGR					
MGR					
			UNLESS OTHERWISE NOTED	THIRD ANGLE PROJECTION	
			SURFACE PREPARATION:		
			BREAK CORNER(S) ---- .000		
			SURFACE FINISH -- XX RMS	REF. No.	
			TOLERANCE(S):	SCALE	
			LINEAR ----- ± .000	NONE	
			ANGULAR ----- ± 0°00'		
			BY	DATE	
			STK No:		
			MAT'L:		
			DESCR.		
			PER EST NO: DXXXX	EST FIN WT = 0.0000 lbs	
REV	ECR	DESCRIPTION	DATE	BY	CHKR

DWG NUMBER
B24394N
442-MRKTG

ALL WETTED PARTS ARE LOW LEAD BRASS ALLOY

TITLE TO AND OWNERSHIP OF THIS ENGINEERING DATA REMAINS IN Mueller Co. NO USE IS TO BE MADE OF THIS DATA EXCEPT AS SPECIFICALLY AUTHORIZED BY Mueller Co. ASSENT ON THE PART OF THE RECIPIENT TO THESE CONDITIONS IS PRESUMED

IN LINE BALL LLB METER VALVE
(MTR x MIP)
DWG NUMBER
B24394N