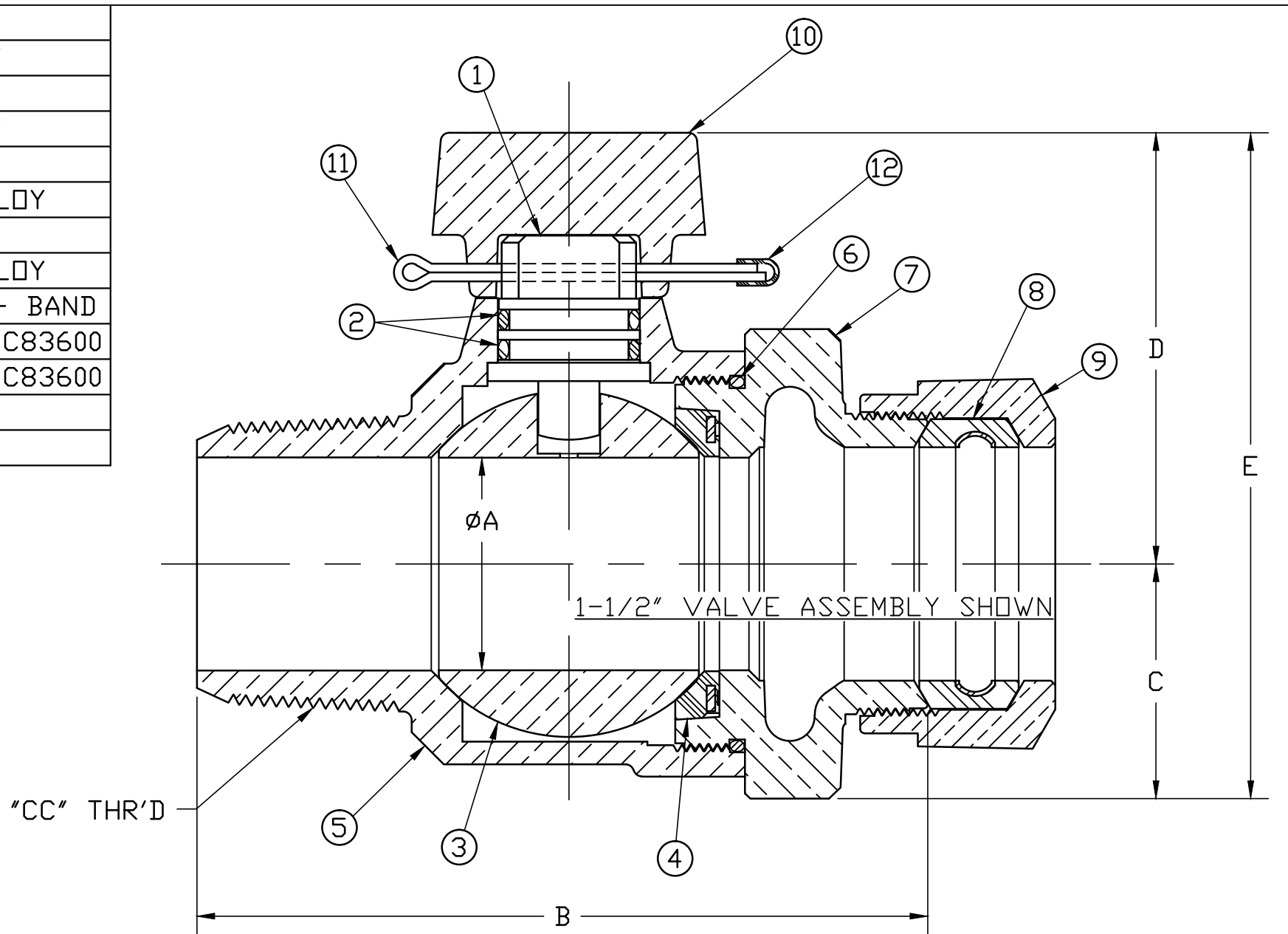


No.	DESCRIPTION	MATERIAL
1	STEM	LOW LEAD BRASS ALLOY
2	O-RING	EPDM D2000
3	BALL	LOW LEAD BRASS ALLOY
4	GASKET - SEAL	NITRILE D2000
5	BODY	CAST LOW LEAD BRASS ALLOY
6	O-RING	EPDM D2000
7	END PIECE	CAST LOW LEAD BRASS ALLOY
8	CTS GSKT SUB	SBR D2000 - GSKT 410ss - BAND
9	CONNX NUT	CAST BRASS ASTM B62 ALLOY C83600
10	T-HEAD CAP	CAST BRASS ASTM B62 ALLOY C83600
11	COTTER PIN	STAINLESS STEEL
12	SILICON CAP	SILICON RUBBER

SIZE	ØA	B	C	D	E
3/4	.750	3.621	.840	2.070	2.910
1	1.000	4.648	1.150	2.271	3.421
1 1/2	1.500	5.157	1.656	3.035	4.691
1 1/2 x 2	1.500	5.131	1.656	3.035	4.691
2	2.010	5.612	2.002	3.358	5.360



NOTE: ALL WETTED PARTS ARE LOW LEAD BRASS ALLOY

FILEPATH: PRODD-ENG\MUELLER\ASYSUBMITTALS\B2500800N

DRFTR	JGarvin	8/19/11	<b>Mueller Co.</b>		
CHKR					
ENGR					
MGR					
UNLESS OTHERWISE NOTED			THIRD ANGLE PROJECTION		
SURFACE PREPARATION:					
BREAK CORNER(S) ---- .000					
SURFACE FINISH -- XX RMS					
TOLERANCE(S):			REF. No.	SCALE	
LINEAR ----- ± .000				NONE	
ANGULAR ----- ± 0°00'					
BY DATE			STK No:		
MAT'L:			DESCR.		
PER EST NO: XXXXX			EST FIN WT = 0.00000LBS		
REV	ECR	DESCRIPTION	DATE	BY	CHKR
BALL CORPORATION VALVE-LLB w/ T-HEAD CAP ("CC" x 110 CTS)					
					DWG NUMBER B2500800N

DWG NUMBER  
 B2500800N  
 442-MRKTG

TITLE TO AND OWNERSHIP OF THIS ENGINEERING  
 DATA REMAINS IN Mueller Co. NO USE IS TO BE  
 MADE OF THIS DATA EXCEPT AS SPECIFICALLY  
 AUTHORIZED BY Mueller Co. ASSENT ON THE PART  
 OF THE RECIPIENT TO THESE CONDITIONS IS PRESUMED