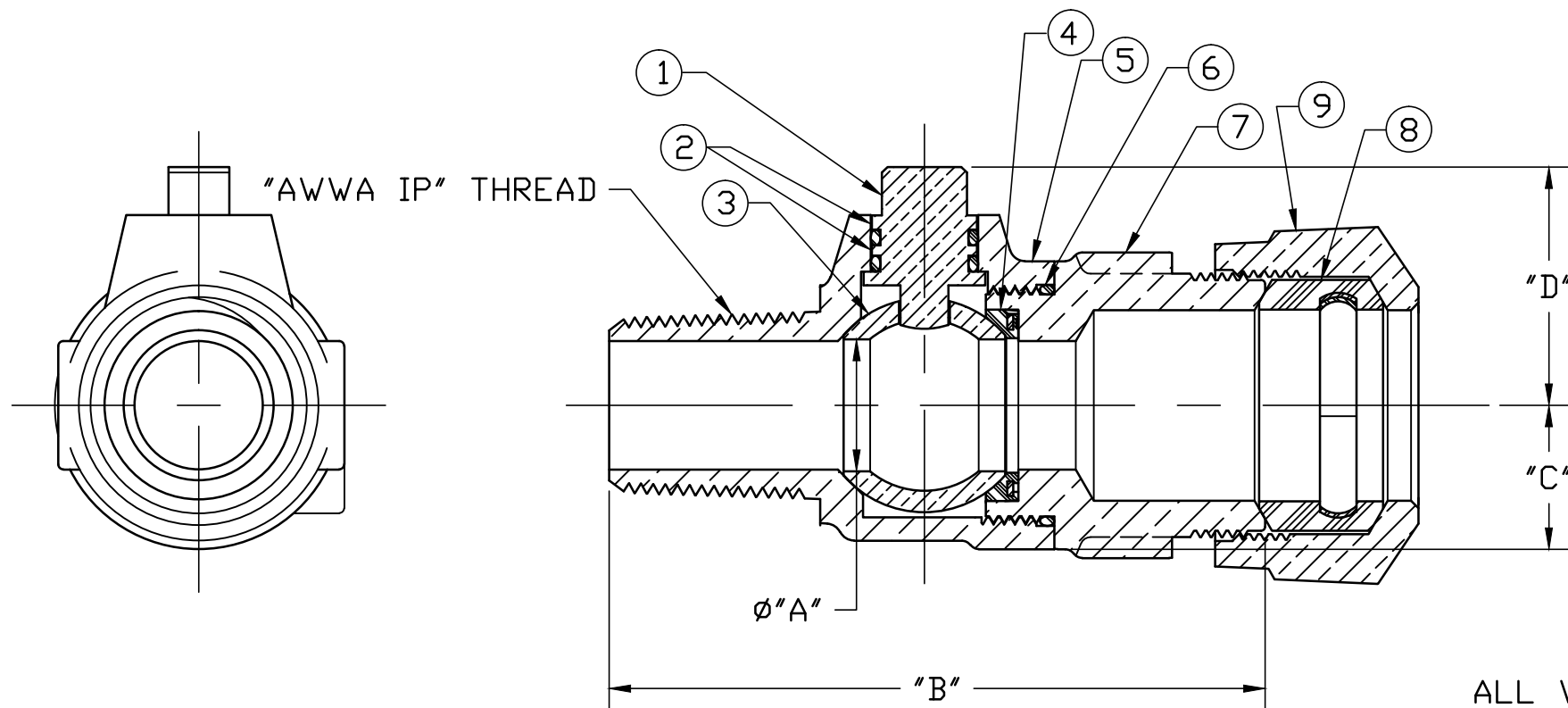


No.	DESCRIPTION	MATERIAL
1	STEM	LOW LEAD BRASS ALLOY
2	O-RING	EPDM ASTM D2000
3	BALL	LOW LEAD BRASS ALLOY
4	GASKET - SEAL	NITRILE ASTM D2000
5	BODY	CAST LOW LEAD BRASS ALLOY
6	O-RING	EPDM ASTM D2000
7	END PIECE	CAST LOW LEAD BRASS ALLOY
8	CTS GSKT SUB	SBR ASTM D2000 -GSKT 410ss -BAND
9	CONNX NUT	CAST BRASS ASTM B62 ALLOY C83600



SIZE	ØA	B	C	D
3/4	.75	3.83	.84	1.39
3/4x1	.75	3.76	.84	1.39
1	1.00	4.41	1.15	1.59

ALL WETTED PARTS ARE LOW LEAD BRASS ALLOY

FILEPATH: PROD-ENG\MUELLER\ASYSUBMITTALS\B2502N

						DRFTR	RWB	6/24/13	<b>Mueller Co.</b>	UNLESS OTHERWISE NOTED SURFACE PREPARATION: BREAK CORNER(S) ---- .000 SURFACE FINISH -- XX RMS TOLERANCE(S): LINEAR ----- ± .000 ANGULAR ----- ± 0°00'	THIRD ANGLE PROJECTION	
						CHKR					REF. No.	SCALE
						ENGR						
						MGR						
							BY	DATE	STK No:			
									MAT'L:			
									DESCR.	BALL CORPORATION LLB VALVE ("AWWA IP" x 110 IPS)	DWG NUMBER B25029N	
									PER EST NO: DXXXX	EST FIN WT = 0.0000 lbs		

DWG NUMBER  
B25029N  
442-MRKTG

TITLE TO AND OWNERSHIP OF THIS ENGINEERING  
DATA REMAINS IN Mueller Co. NO USE IS TO BE  
MADE OF THIS DATA EXCEPT AS SPECIFICALLY  
AUTHORIZED BY Mueller Co. ASSENT ON THE PART  
OF THE RECIPIENT TO THESE CONDITIONS IS PRESUMED