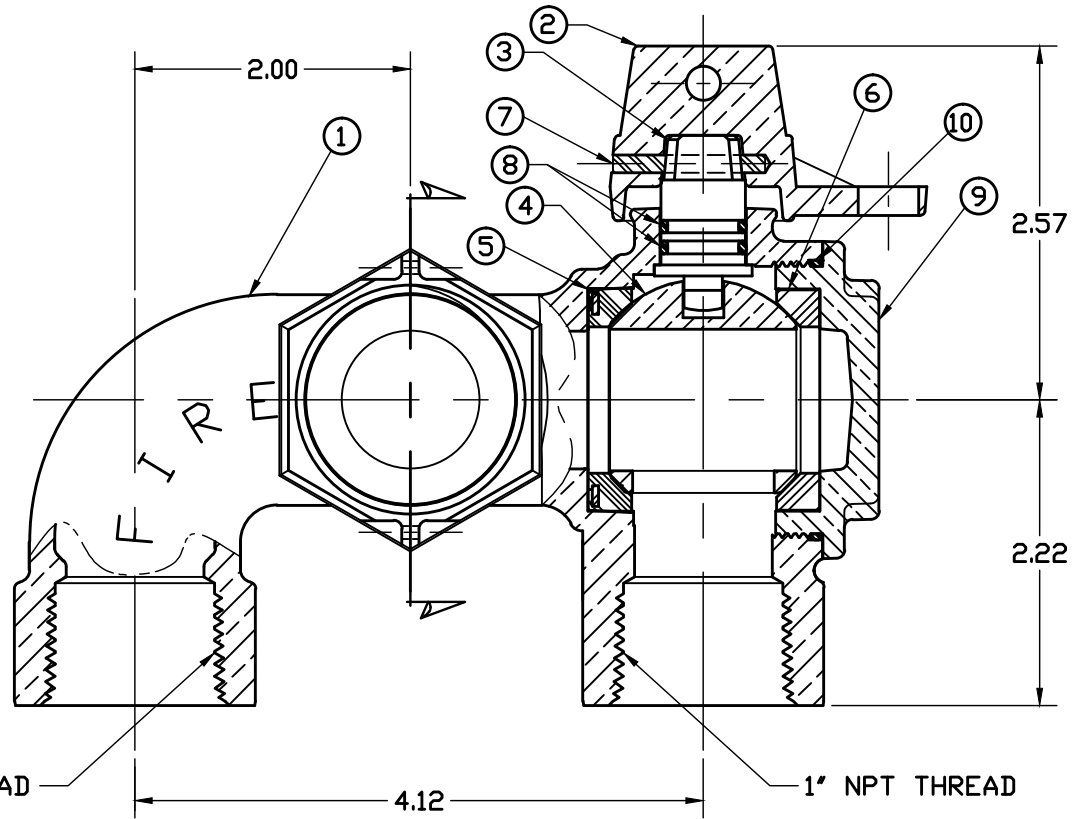
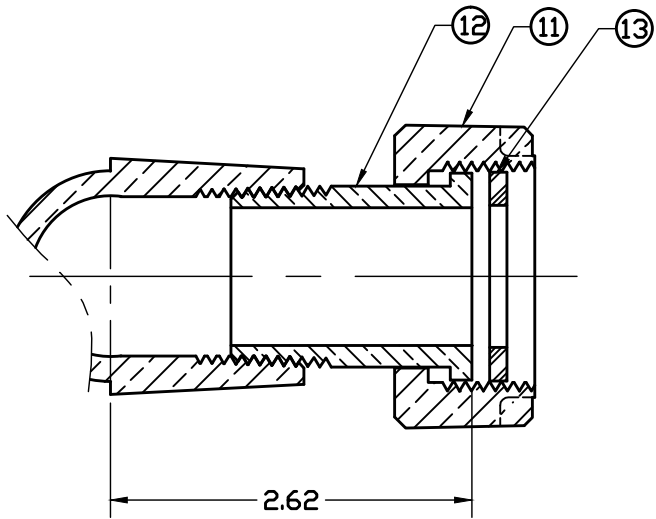


No.	DESCRIPTION	MATERIAL DESCRIPTION
1	BODY	CAST LOW LEAD BRASS ALLOY
2	CAP	CAST BRASS ASTM B62 ALLOY C83600
3	STEM	LOW LEAD BRASS ALLOY
4	BALL	LOW LEAD BRASS ALLOY
5	SEAT (RUBBER)	NITRILE ASTM D2000
6	SEAT (DELRIN)	(WHITE) DELRIN
7	SOLID PIN	AISI 303 STAINLESS STEEL
8	O-RING	EP ASTM D2000
9	END CAP	CAST LOW LEAD BRASS ALLOY
10	O-RING	EP ASTM D2000
11	PLAIN NUT	CAST BRASS ASTM B62 ALLOY C83600
12	TAILPIECE	LOW LEAD BRASS ALLOY
13	RUBBER GSKT	NITRILE ASTM D2000



NOTE: ALL WETTED PARTS ARE LOW LEAD BRASS ALLOY

FILEPATH: PROD-ENG\MUELLER\ASYSUBMITTALS\B25251N

					DRF TRJ Garvin	2/8/11	Mueller Co.	
					CHKR			
					ENGR			
					MGR			
					BY	DATE	UNLESS OTHERWISE NOTED	
					STK No:		THIRD ANGLE PROJECTION	
					MAT'L:		SURFACE PREPARATION:	
					DESCR.		BREAK CORNER(S) ---- .000	
							SURFACE FINISH -- XX RMS	
							TOLERANCE(S):	
							LINEAR ----- ± .000	
							ANGULAR ----- ± 0°00'	
REV	ECR	DESCRIPTION	DATE	BY	CHKR	1" RESIDENTIAL FIRE VALVE - LLB		PART NUMBER
						360° TURN (FIP x METER X FIP)		B25251N
PER EST NO: XX-XXXX EST FIN WT = 0.0000 lbs								

PART NUMBER
B25251N
442-MRKTG