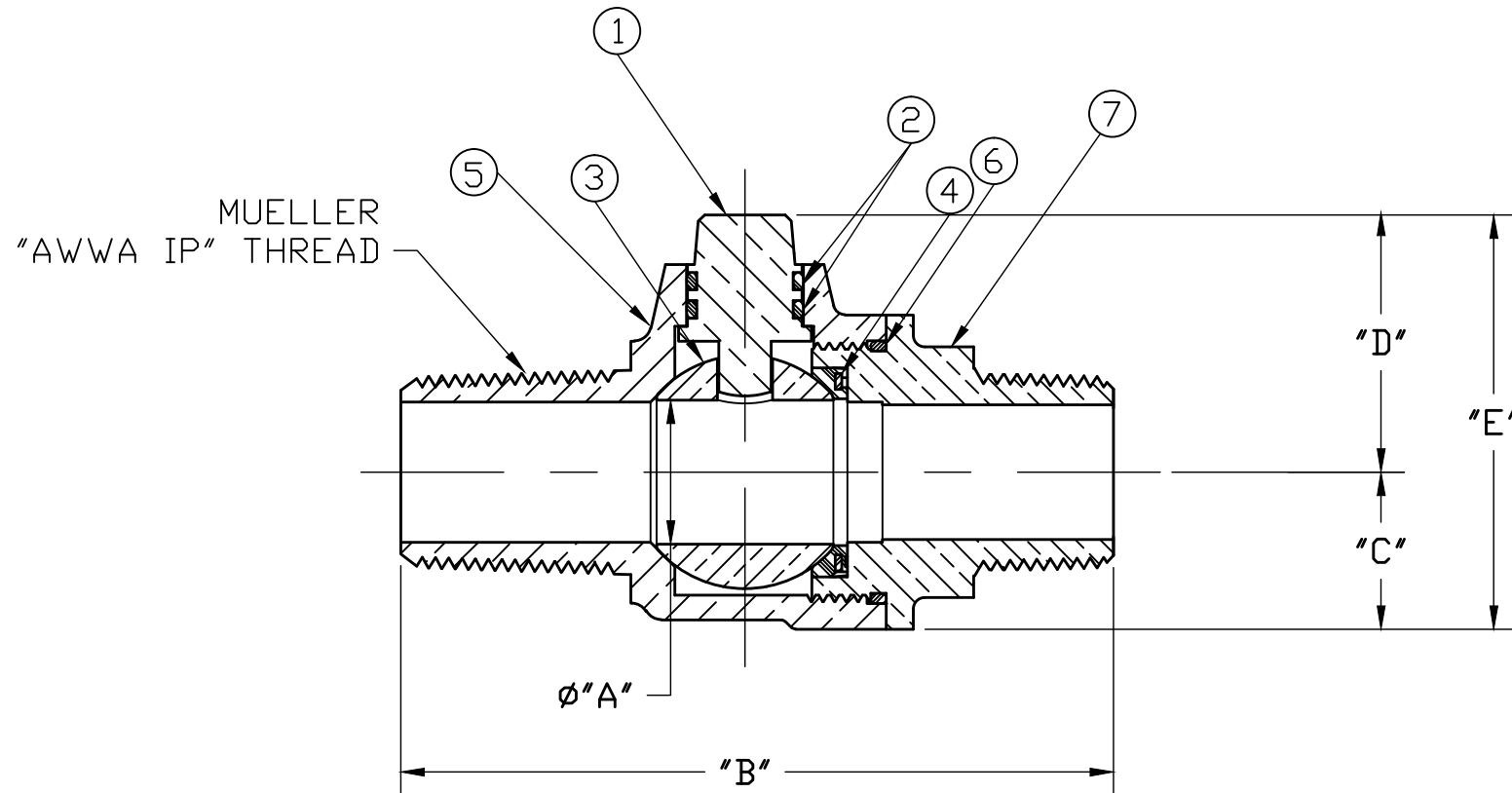


No.	QTY.	DESCRIPTION	MATERIAL
1	1	STEM	LOW LEAD BRASS ALLOY
2	2	O-RING	EPDM D2000
3	1	BALL	LOW LEAD BRASS ALLOY
4	1	GASKET - SEAL	NITRILE D2000
5	1	BODY	LOW LEAD BRASS ALLOY
6	1	O-RING	EPDM D2000
7	1	END PIECE	LOW LEAD BRASS ALLOY



SIZE	ØA	B	C	D	E
1 1/2	1.500	5.829	1.500	2.235	3.735
2	2.000	6.404	1.820	2.557	4.377

FILEPATH: PROD-ENG\MUELLER\APPROVED\B2969

DRFTR	RWB	6/25/03			
CHKR					
ENGR					
MGR					
			UNLESS OTHERWISE NOTED	THIRD ANGLE PROJECTION	
			SURFACE PREPARATION:		
			BREAK CORNER(S) ---- .000		
			SURFACE FINISH -- 000 RMS	REF. No.	SCALE
			TOLERANCE(S):	NONE	
			LINEAR ----- ± .000		
			ANGULAR ----- ± 0°00'		
			BY	DATE	
			STK No:		
			MAT'L:		
REV	ECR	DESCRIPTION	DATE	BY	CHKR
			DESCR. MUELLER CORP. STOP BALL VALVE ("AWWA IP" x MIP)		
			PART NUMBER B2969N		
PER EST NO: DXXXX EST FIN WT = 0.0000 lbs					

PART NUMBER  
B2969N  
442-MRKTG