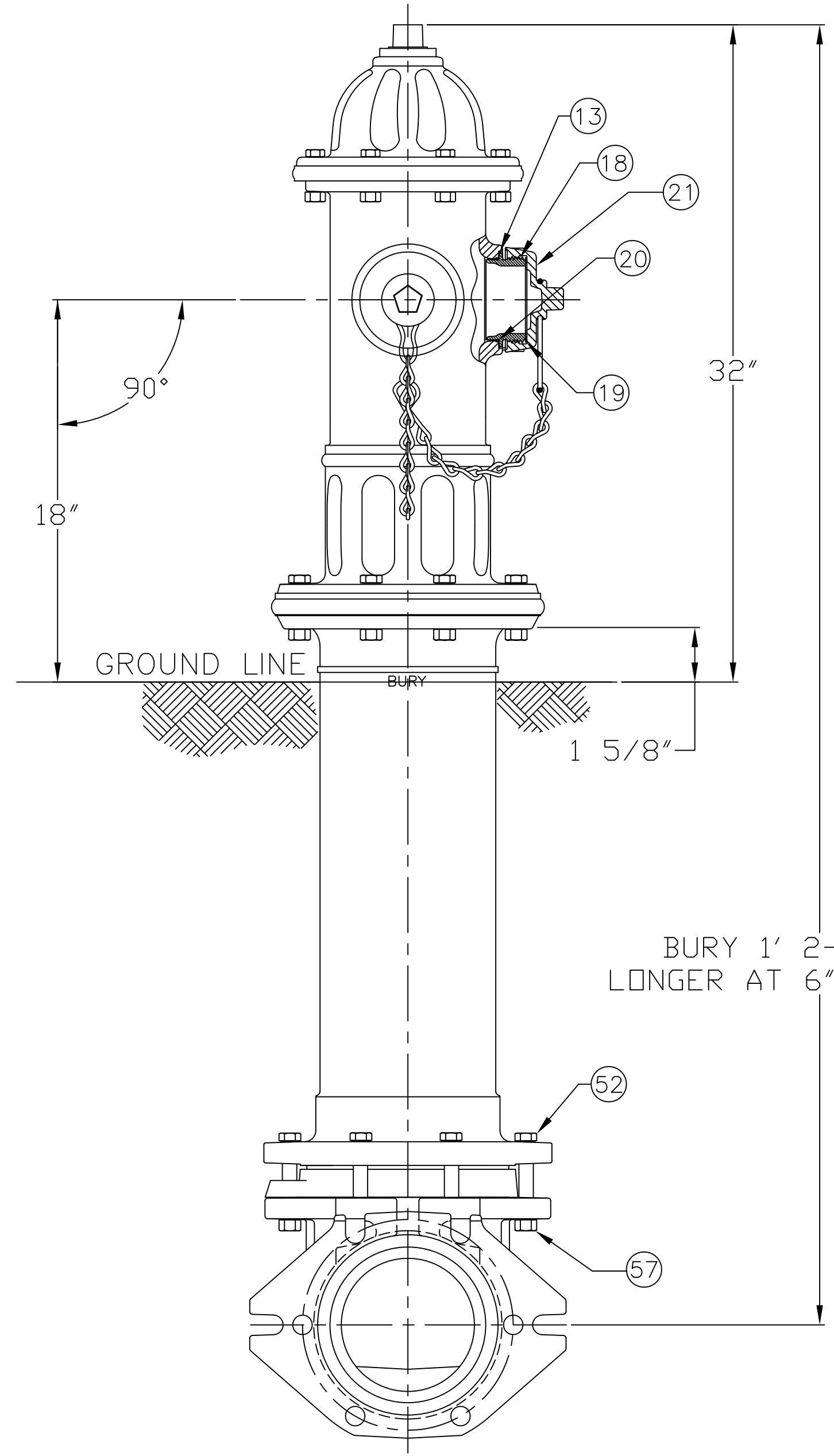


4 1/2" A433 & 5 1/4" A435 CENTURION UL-FM w/ TWO HOSE NOZZLES
- 200 P.S.I. W.P.- 400 P.S.I. TEST, 1997 STYLE.



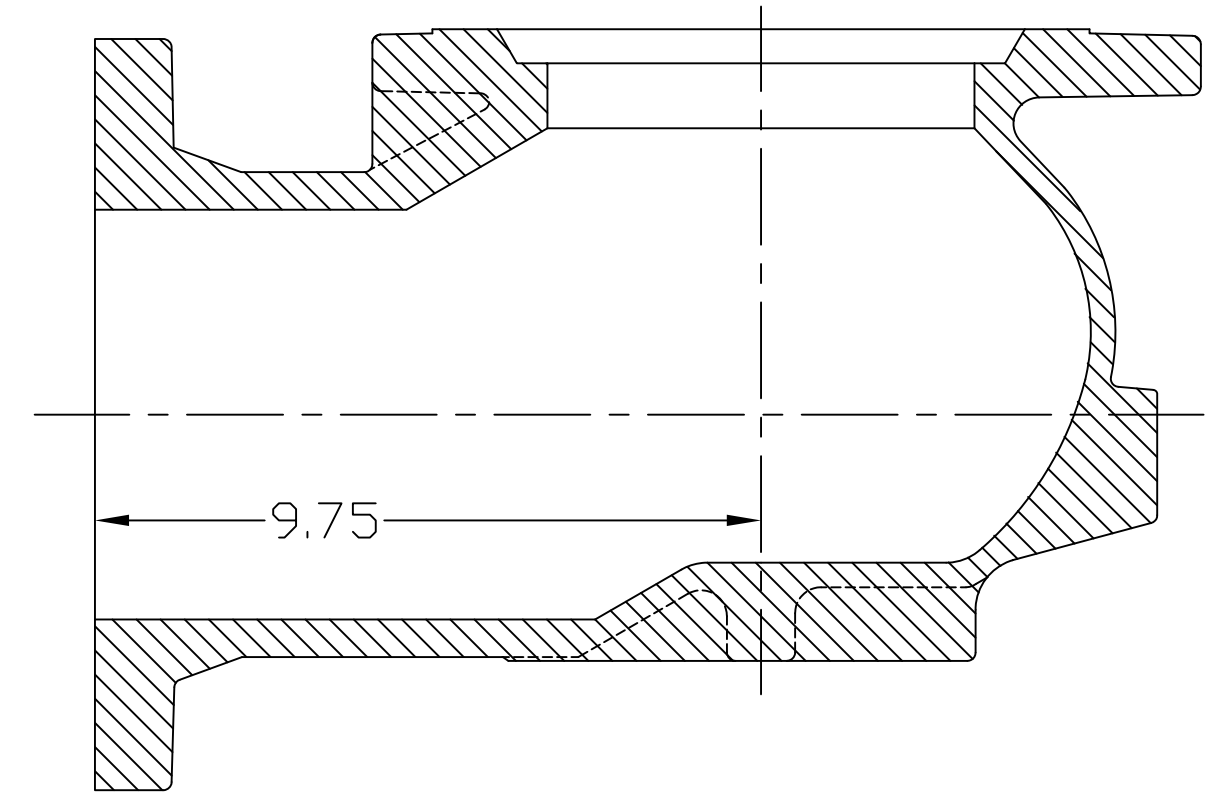
ITEM	DESCRIPTION	REQ'D	MATERIAL	A.S.T.M.	
1	OPERATING NUT	1	BRONZE	B-584	C83600
2	WIPER RING	1	RUBBER	D-2000	EPDM
3	HOLD DOWN NUT "O" RING	1	RUBBER	D-2000	EPDM
4	HOLD DOWN NUT	1	BRONZE	B-584	C83600
5	BONNET "O" RING	1	RUBBER	D-2000	EPDM
6	ANTI-FRICTION WASHER	1	CELCON		GR M90-04
7	OIL FILLER PLUG	1	BRASS	B-16	ALLOY 360
8	BONNET	1	CAST IRON	A-126	CLASS B
9	BONNET BOLT	8	STEEL	J429	GRADE 2
10	TOP UPPER BARREL O-RING	1	RUBBER	D-2000	EPDM
11	UPPER STEM	1	CARBON STEEL	A-576	GR 1144T
12	STEM "O" RING (UPPER)	1	RUBBER	D-2000	EPDM
13	NOZZLE LOCK	2	STAINLESS STEEL	A-276	305 OR 410
14	HOSE NOZZLE	1	BRONZE	B-584	C89833
15	HOSE NOZZLE CAP GASKET	1	RUBBER	D-2000	NEOPRENE
16	HOSE NOZZLE "O" RING	1	RUBBER	D-2000	EPDM
17	HOSE NOZZLE CAP	1	CAST IRON	A-126	CLASS B
18	HOSE NOZZLE	1	BRONZE	B-584	C89833
19	HOSE NOZZLE CAP GASKET	1	RUBBER	D-2000	NEOPRENE
20	HOSE NOZZLE "O" RING	1	RUBBER	D-2000	EPDM
21	HOSE NOZZLE CAP	1	CAST IRON	A-126	CLASS B

SEE CAT. RECORD FOR RESPECTIVE PARTS OR SUB. ASS'YS

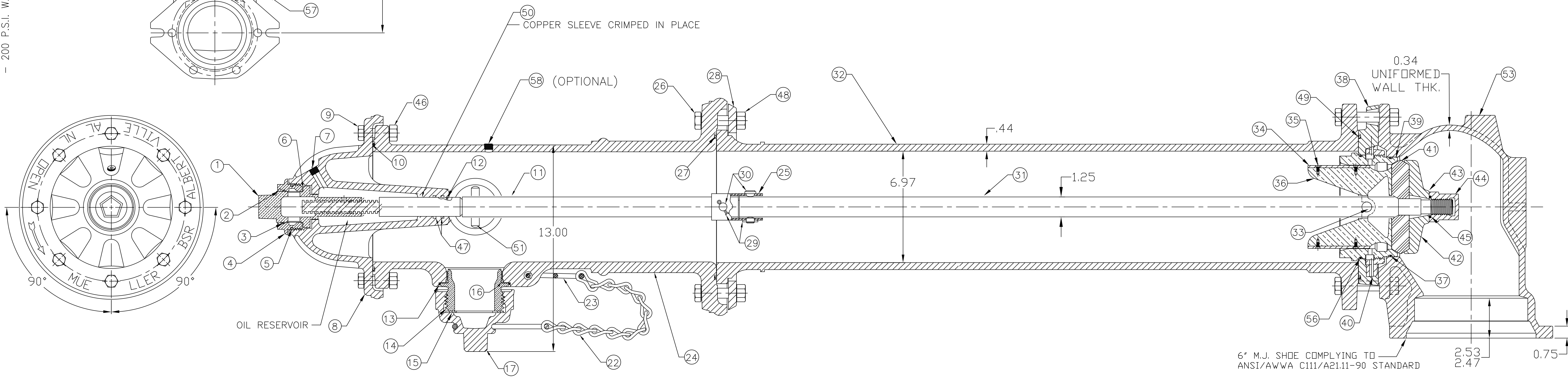
ITEM	DESCRIPTION	REQ'D	MATERIAL	A.S.T.M.	
22	CAP CHAIN	3	STEEL		ELECTRO GALV.
23	CHAIN HOOK	1	STEEL		ELECTRO GALV.
24	UPPER BARREL	1	CAST IRON	A-126	CLASS B
25	STEM COUPLING	1	STAINLESS STEEL	A-890	1.5% SILICON MAX
26	FLANGE BOLT	8	STEEL	J429	GRADE 2
27	BOTTOM UPPER BARREL O-RING	1	RUBBER	D-2000	EPDM
28	FLANGE	1	CAST IRON	A-126	CLASS B
29	COTTER PIN	2	STAINLESS STEEL	A-276	302
30	CLEVIS PIN	2	STAINLESS STEEL	A-276	305
31	LOWER STEM	1	CARBON STEEL	A-576	GR 1144T
32	LOWER BARREL	1	CAST IRON	A-126	CLASS B
33	STEM PIN	1	STAINLESS STEEL	A-276	302
34	DRAIN VALVE FACING	2	H.D. POLYETHYLENE		LS 5660-00
35	DRAIN VALVE FACING SCREW	4	STAINLESS STEEL	A-276	302
36	UPPER VALVE PLATE	1	BRONZE	B-584	C89833
37	BOTTOM SEAT "O" RING	1	RUBBER	D-2000	EPDM
38	DRAIN RING HOUSING	1	CAST IRON	A-126	CLASS B
39	SEAT RING	1	BRONZE	B-584	C89833
40	DRAIN RING	1	BRONZE	B-584	ALLOY 844
41	MAIN VALVE	1	RUBBER	D-2000	EPDM
42	LOWER VALVE PLATE	1	CAST IRON	A-126	CLASS B
43	LOCK WASHER	1	STAINLESS STEEL	A-276	302

ITEM	DESCRIPTION	REQ'D	MATERIAL	A.S.T.M.	
44	VALVE NUT	1	CAST IRON	A-126	CLASS B
45	VALVE NUT SEAL	1	RUBBER		NITRILE
46	BONNET NUT	8	STEEL	A563	GRADE B
47	STEM O-RING	2	RUBBER	D-2000	EPDM
48	FLANGE NUT	8	STEEL	A563	GRADE B
49	DRAIN RING HOUSING O-RING	1	RUBBER	D-2000	EPDM
50	SLEEVE	1	COPPER	B-75	ALLOY 122
51	UPPER STEM PIN	1	STAINLESS STEEL	A-276	302
52	HEX BOLT	6	STEEL	J429	GRADE 2
53	SHOE	1	DUCTILE IRON	A-536	65-45-12
54	PIPE GLAND	1	CAST IRON	A-126	CLASS B
55	HEX BOLT	2	STEEL	A563	GRADE B
56	"O" RING	1	RUBBER	D-2000	EPDM
57	HEX NUT	6	STEEL	A-307	ELECTROGALV. GR. B
58	PIPE PLUG	1	CAST IRON	A-126	CLASS B
59					
60					
61					
62					

* OPTIONAL



OPTIONAL FLANGE SHOE



NOZZLE INFORMATION
2-2-1/2" HOSE NOZZLES

<small>INCH</small> <small>INITIAL RELEASE</small> <small>DRFT/ANC</small> 5/20/15 <small>CHK'R</small> <small>APP</small> <small>E.O. NUMBER</small>	<small>TOLERANCES - MACHINING</small> <small>UNLESS OTHERWISE NOTED</small> <small>BREAK EDGES</small> <small>MACH.</small> .006/.016 <small>FINISH SURFACES</small> <small>125</small> <small>FRACTIONS</small> <small>±1/64</small> <small>DECIMALS</small> <small>2 PL ±.025</small> <small>3 PL ±.010</small> <small>ANGLES</small> <small>±1°</small>	<small>THIRD ANGLE PROJECTION</small> <small>PURCH.</small> <small>FINISH</small> <small>REF. NO.</small> <small>SCALE</small> <small>N.T.S.</small> <small>STK. NO.</small> <small>SEE TABLE</small>
<small>Mueller Co.</small>	<small>MAT'L</small> SEE TABLE <small>DESCR</small> 4 1/2" A433 & 5 1/4" A435 CENTURION W/TWO HOSE NOZZLES	<small>REVISION</small> <small>NUMBER</small> <small>A</small> <small>CE-FH-111</small> <small>SHEET 1 OF 1</small>

<small>REV.</small> <small>A</small> <small>REVISION</small> <small>DATE</small> <small>DESCRIPTION</small>	<small>REF.</small> <small>DRFT/ANC</small> <small>CHK'R</small> <small>APP</small> <small>DATE</small> <small>12-2-15</small>
---	---

DWG. CE-FH-111